

Table 1.3 Work Experience of Unemployed Population Aged 15 and over by Sex, Age Group, 1998 and 2008

| Sex/ Age          | Number of Persons              |                  |                       |                                |                  |                       | Unemployment Rate* |      | Never Employment Before Rate** |      |
|-------------------|--------------------------------|------------------|-----------------------|--------------------------------|------------------|-----------------------|--------------------|------|--------------------------------|------|
|                   | 1998                           |                  |                       | 2008                           |                  |                       |                    |      |                                |      |
|                   | Economically Active Population | Total Unemployed | Never Employed Before | Economically Active Population | Total Unemployed | Never Employed Before | 1998               | 2008 | 1998                           | 2008 |
| Both Sexes        |                                |                  |                       |                                |                  |                       |                    |      |                                |      |
| Total (Aged 15 +) | 5,038,382                      | 264,894          | 204,578               | 6,955,640                      | 114,368          | 88,910                | 5.3                | 1.6  | 77.2                           | 77.7 |
| 15-24             | 1,268,671                      | 154,482          | 131,753               | 1,796,785                      | 59,823           | 50,984                | 12.2               | 3.3  | 85.3                           | 85.2 |
| 25-34             | 1,489,631                      | 57,299           | 40,734                | 1,759,531                      | 28,117           | 21,922                | 3.8                | 1.6  | 71.1                           | 78.0 |
| 35-64             | 2,095,859                      | 47,843           | 29,090                | 3,087,844                      | 23,213           | 14,507                | 2.3                | 0.8  | 60.8                           | 62.5 |
| 65+               | 184,221                        | 5,270            | 3,001                 | 311,480                        | 3,215            | 1,497                 | 2.9                | 1.0  | 56.9                           | 46.6 |
| Male              |                                |                  |                       |                                |                  |                       |                    |      |                                |      |
| Total (Aged 15 +) | 2,443,580                      | 113,279          | 85,894                | 3,396,449                      | 50,523           | 38,707                | 4.6                | 1.5  | 75.8                           | 76.6 |
| 15-24             | 572,862                        | 70,728           | 60,975                | 858,191                        | 29,216           | 25,018                | 12.3               | 3.4  | 86.2                           | 85.6 |
| 25-34             | 769,547                        | 24,390           | 16,006                | 897,833                        | 11,832           | 8,738                 | 3.2                | 1.3  | 65.6                           | 73.9 |
| 35-64             | 998,229                        | 16,066           | 7,928                 | 1,482,969                      | 8,272            | 4,514                 | 1.6                | 0.6  | 49.3                           | 54.6 |
| 65+               | 102,942                        | 2,095            | 985                   | 157,456                        | 1,203            | 437                   | 2.0                | 0.8  | 47.0                           | 36.3 |
| Female            |                                |                  |                       |                                |                  |                       |                    |      |                                |      |
| Total (Aged 15 +) | 2,594,802                      | 151,615          | 118,684               | 3,559,191                      | 63,845           | 50,203                | 5.8                | 1.8  | 78.3                           | 78.6 |
| 15-24             | 695,809                        | 83,754           | 70,778                | 938,594                        | 30,607           | 25,966                | 12.0               | 3.3  | 84.5                           | 84.8 |
| 25-34             | 720,084                        | 32,909           | 24,728                | 861,698                        | 16,285           | 13,184                | 4.6                | 1.9  | 75.1                           | 81.0 |
| 35-64             | 1,097,630                      | 31,777           | 21,162                | 1,604,875                      | 14,941           | 9,993                 | 2.9                | 0.9  | 66.6                           | 66.9 |
| 65+               | 81,279                         | 3,175            | 2,016                 | 154,024                        | 2,012            | 1,060                 | 3.9                | 1.3  | 63.5                           | 52.7 |

\* Unemployment Rate = (Total Unemployed) / (Economically Active Population) \*100

\*\* Never Employment Before Rate = (Never Employed Before) / (Total Unemployed)\*100

### 1.1.2 Changes in Economic Activity from 1998 to 2008

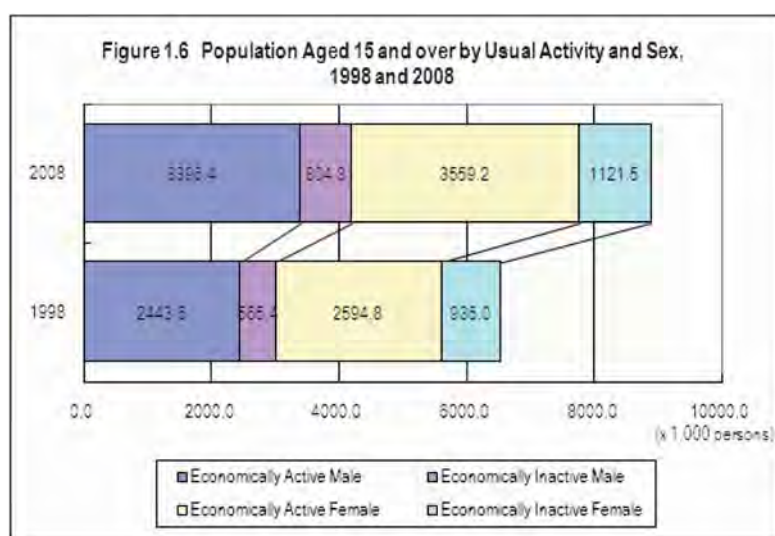
During the decade between 1998 and 2008, the population aged 15 and over in Cambodia has increased from 6.5 million to 8.9 million. Most of the increased population participated in the economic activity, and economically active population has increased from 5 million in 1998 to approximately 7 million in 2008 (Table 1.4).

In 2008, the number of economically active males, economically inactive males, and the economically active females has become 1.4 times larger than the number of those people in 1998, respectively. The number of females who are economically inactive has become 1.2 times larger than that in 1998 (Figure 1.6).

The economically active rate by age group is shown in Table 1.5 and Figure 1.7. As for the

**Table 1.4 Population Aged 5 and over by Usual Economic Activity Status, Sex and Two Age Groups  
1998 and 2008**

| Age group               | Population |                     |           |            |                       |
|-------------------------|------------|---------------------|-----------|------------|-----------------------|
|                         | Total      | Economically Active |           |            | Economically Inactive |
|                         |            |                     | Employed  | Unemployed |                       |
| <b>Aged 15 and over</b> |            |                     |           |            |                       |
| <b>1998</b>             |            |                     |           |            |                       |
| Both Sexes              | 6,539,848  | 5,038,382           | 4,773,488 | 264,894    | 1,501,466             |
| Male                    | 3,009,001  | 2,443,580           | 2,330,301 | 113,279    | 565,421               |
| Female                  | 3,530,847  | 2,594,802           | 2,443,187 | 151,615    | 936,045               |
| <b>2008</b>             |            |                     |           |            |                       |
| Both Sexes              | 8,881,890  | 6,955,640           | 6,841,272 | 114,368    | 1,926,250             |
| Male                    | 4,201,248  | 3,396,449           | 3,345,926 | 50,523     | 804,799               |
| Female                  | 4,680,642  | 3,559,191           | 3,495,346 | 63,845     | 1,121,451             |
| <b>Aged 5 and over</b>  |            |                     |           |            |                       |
| <b>1998</b>             |            |                     |           |            |                       |
| Both Sexes              | 9,970,864  | 5,118,945           | 4,845,762 | 273,183    | 4,851,919             |
| Male                    | 4,764,116  | 2,476,844           | 2,360,107 | 116,737    | 2,287,272             |
| Female                  | 5,206,748  | 2,642,101           | 2,485,655 | 156,446    | 2,564,647             |
| <b>2008</b>             |            |                     |           |            |                       |
| Both Sexes              | 12,023,067 | 7,053,398           | 6,935,246 | 118,152    | 4,969,669             |
| Male                    | 5,812,996  | 3,445,053           | 3,392,637 | 52,416     | 2,367,943             |
| Female                  | 6,210,071  | 3,608,345           | 3,542,609 | 65,736     | 2,601,726             |



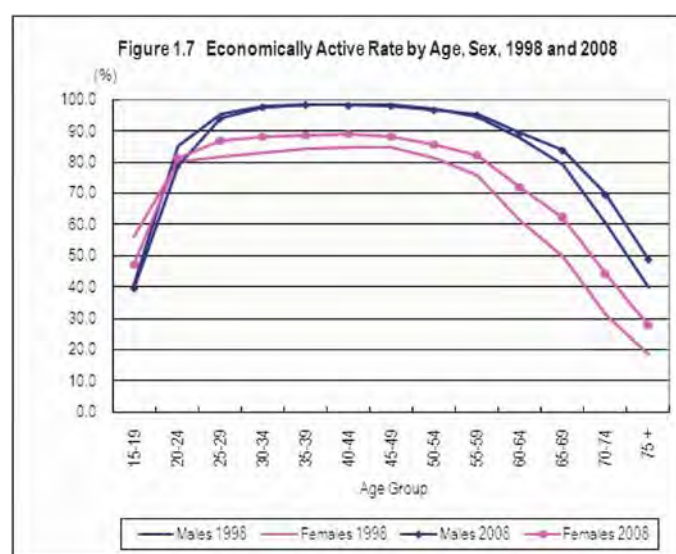
population who aged 15 and over, the economically active rate of Cambodia has slightly increased from 77.0 percent in 1998 to 78.3 percent in 2008. Although the economically active rate of male has slightly decreased (from 81.2 percent to 80.8 percent), and that of female has increased (from 73.5 percent to 76.0 percent).

Table 1.5 Economically Active rate with Average Age by Sex, Age Group 1998 and 2008

| Age group   | Economically Active Rate |             |             |             |             |             |
|---|--------------------------|-------------|-------------|-------------|-------------|-------------|
|   | 1998                     |             |             | 2008        |             |             |
|   | Both sexes               | Males       | Females     | Both sexes  | Males       | Females     |
| <b>Total (Aged 5 and over)</b>                                  | <b>51.3</b>              | <b>52.0</b> | <b>50.7</b> | <b>58.7</b> | <b>59.3</b> | <b>58.1</b> |
| 5-14  | 2.3                      | 1.9         | 2.8         | 3.1         | 3.0         | 3.2         |
| <b>Total (Aged 15 and over)</b>                                 | <b>77.0</b>              | <b>81.2</b> | <b>73.5</b> | <b>78.3</b> | <b>80.8</b> | <b>76.0</b> |
| 15-19   | 48.6                     | 40.8        | 56.2        | 43.3        | 39.6        | 47.2        |
| 20-24   | 82.6                     | 85.3        | 80.1        | 80.0        | 78.8        | 81.2        |
| 25-29   | 88.4                     | 95.4        | 81.9        | 90.5        | 94.1        | 87.0        |
| 30-34   | 90.0                     | 97.9        | 82.9        | 92.8        | 97.8        | 88.1        |
| 35-39   | 90.8                     | 98.4        | 84.2        | 93.4        | 98.5        | 88.6        |
| 40-44   | 90.2                     | 98.5        | 84.6        | 93.3        | 98.3        | 88.9        |
| 45-49   | 90.5                     | 98.4        | 84.7        | 92.7        | 98.2        | 88.2        |
| 50-54   | 88.1                     | 97.3        | 81.3        | 90.1        | 96.8        | 85.6        |
| 55-59   | 83.9                     | 94.7        | 75.8        | 87.6        | 95.3        | 82.1        |
| 60-64   | 72.4                     | 87.7        | 61.3        | 79.3        | 89.5        | 72.0        |
| 65-69   | 62.1                     | 79.2        | 49.6        | 71.3        | 83.8        | 62.3        |
| 70-74   | 43.5                     | 60.3        | 31.4        | 54.4        | 69.6        | 44.1        |
| 75 +  | 27.3                     | 40.0        | 18.7        | 36.1        | 48.9        | 27.9        |
| Average age of economically active population aged 15 and over* | 35.1                     | 35.4        | 34.8        | 36.2        | 36.0        | 36.3        |

\* Average age is calculated from median value of age group and population of it, but for aged 75 and over, median value of age group is substituted by 77.

Note) Original figures are shown in Annex



Economically active rate of males in their early 20s has decreased during the decade, and that of age 60 and over has increased. Economically active rate of females has increased for all of the age groups except the age group of 15 - 19. The reduction of economically active rate among the younger age groups is due to the growth of schooling. The increase of female economically active rate indicates the increase of employment opportunity, and also the growing cost for maintaining a household.

Although the average age of the economically active population was 35.1 in 1998, it increased 1.1 years in ten years, and became 36.2 in 2008. The average age of males increased by 0.6 years during the decade (from age 35.4 to 36.0), but for females, it increased by 1.5 years during the same period (from 34.8 to 36.3 years of age). The average age of economically active females in 1998 was lower than that of economically

active males, but it exceeded in 2008.

On the whole, we could say the change that females experienced in the labor market for these ten years is larger than males did.

Table 1.6 shows the unemployment rate of 1998 and 2008. The unemployment rate in Cambodia has fallen drastically during the decade. But the tendencies that female unemployment rate is higher than that of males, and that the highest unemployment rate is recorded by people with age of 15 – 19 followed by ones in their early 20s have not changed.

**Table 1.6 Unemployment Rate with Average Age by Sex, Age Group, 1998 and 2008**

| Age group   | Unemployment Rate |            |            |            |            |            |
|---|-------------------|------------|------------|------------|------------|------------|
|   | 1998              |            |            | 2008       |            |            |
|   | Both sexes        | Males      | Females    | Both sexes | Males      | Females    |
| <b>Total (Aged 5 and over)</b>                                  | <b>5.3</b>        | <b>4.7</b> | <b>5.9</b> | <b>1.7</b> | <b>1.5</b> | <b>1.8</b> |
| 5-14  | 10.3              | 10.4       | 10.2       | 3.9        | 3.9        | 3.8        |
| <b>Total (Aged 15 and over)</b>                                 | <b>5.3</b>        | <b>4.6</b> | <b>5.8</b> | <b>1.6</b> | <b>1.5</b> | <b>1.8</b> |
| 15-19   | 15.4              | 16.4       | 14.7       | 4.0        | 4.2        | 3.9        |
| 20-24   | 8.8               | 8.7        | 8.8        | 2.9        | 2.9        | 2.9        |
| 25-29   | 4.6               | 3.9        | 5.3        | 1.9        | 1.6        | 2.2        |
| 30-34   | 3.0               | 2.3        | 3.8        | 1.1        | 0.8        | 1.3        |
| 35-39   | 2.4               | 1.8        | 3.0        | 0.8        | 0.6        | 1.1        |
| 40-44   | 2.1               | 1.5        | 2.6        | 0.7        | 0.5        | 0.8        |
| 45-49   | 2.1               | 1.4        | 2.6        | 0.7        | 0.5        | 0.9        |
| 50-54   | 2.0               | 1.3        | 2.7        | 0.7        | 0.5        | 0.8        |
| 55-59   | 2.4               | 1.6        | 3.2        | 0.8        | 0.6        | 1.0        |
| 60-64   | 3.0               | 2.0        | 4.0        | 1.0        | 0.7        | 1.3        |
| 65-69   | 3.9               | 2.6        | 5.4        | 1.4        | 1.0        | 1.8        |
| 70-74   | 1.4               | 1.3        | 1.6        | 0.6        | 0.5        | 0.7        |
| 75 +  | 1.8               | 1.6        | 2.1        | 0.8        | 0.7        | 0.9        |
| Average age of economically active population aged 15 and over* | 26.8              | 25.7       | 27.7       | 28.6       | 27.1       | 29.7       |

\* Average age is calculated from median value of age group and population of it, but for aged 75 and over, median value of age group is substituted by 77.

Note) Original figures are shown in Annex

### 1.1.3 Sub-national Differences of Usual Economic Activity

Usually, people's living is greatly influenced by natural environment and development of industry. Cambodia has four natural regions; Plains, Tonle Sap, Coastal and Plateau/Mountains region.

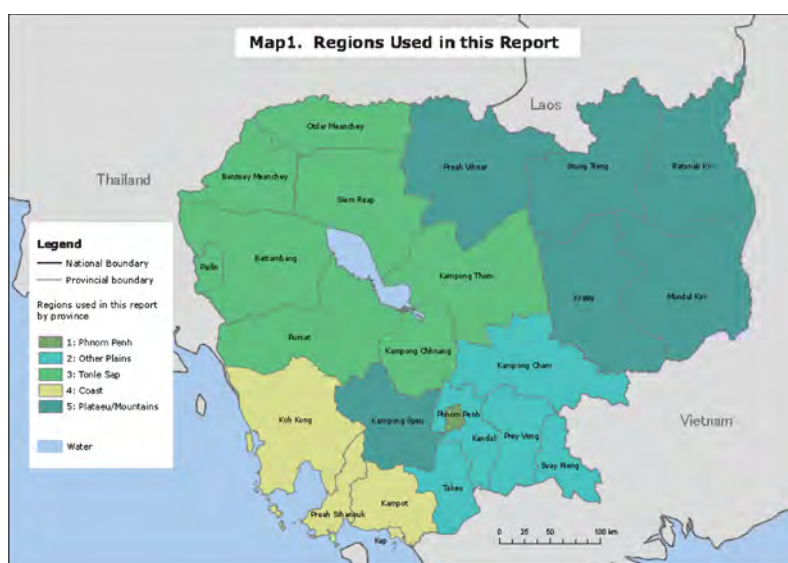
According to the national definition, Phnom Penh is classified as Plain Region. Since the economic characteristic of Phnom Penh is very different from that of the other provinces classified as Plains. Separation of Phnom Penh from the Plain region was done in this report. Plains region excluding Phnom Penh is called 'Other Plains' henceforth.

Nearly 40 percent of Cambodian population live in Other Plains and 30 percent live in Tonle Sap region. Although Plateau/Mountains region covers a large part of geographical areas in Cambodia, its population account for only 10 percent. (Table 1.7)

Table 1.7 Correspondence Table of Region and Province with Population Aged 15 and over by Region

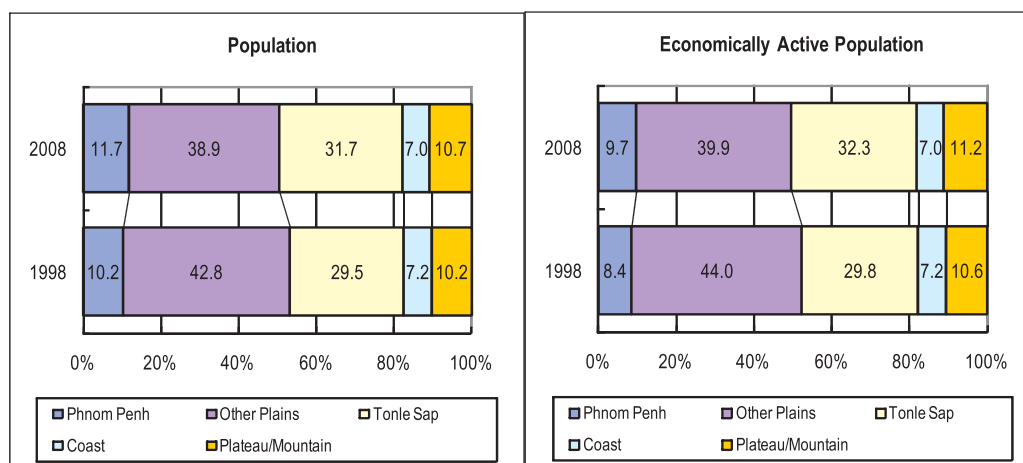
| Region           | Province  | Population |           | Economically Active Population |           |
|------------------|---|------------|-----------|--------------------------------|-----------|
|                  |   | 1998       | 2008      | 1998                           | 2008      |
| Phnom Penh       | Phnom Penh  | 668,815    | 1,036,418 | 420,943                        | 675,169   |
| Other Plains     | Kampong Cham, Kandal, Prey Veng, Svay Rieng, Takeo  | 2,801,523  | 3,452,860 | 2,217,201                      | 2,776,612 |
| Tonle Sap        | Banteay Meanchey, Battambang, Kampong Chhnang, Kampong Thom, Pursat, Siemreap, Oddar Meanchey, Pailin | 1,931,908  | 2,813,985 | 1,499,850                      | 2,243,797 |
| Coast            | Kampot, Koh Kong, Preah Sihanouk, Kep   | 473,766    | 624,916   | 364,135                        | 484,189   |
| Plateau/Mountain | Kampong Speu, Kratie, Mondul Kiri, Preah Vihear, Ratanak Kiri, Stung Treng                            | 663,836    | 953,711   | 536,253                        | 775,873   |

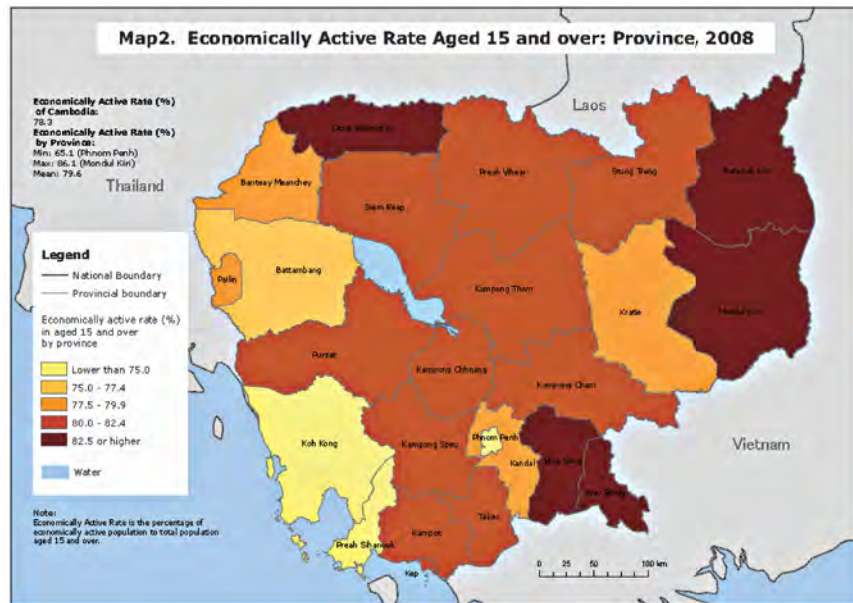
Source: National Institute for Statistics (<http://www.nis.gov.kh/index.php/statistics/metadata>)



Population who aged 15 and over in Cambodia in 2008 increased by 1.36 times compared with that in 1998. There are regional differences in an increase of population. In 2008, population of Phnom Penh increased by 1.55 times, compared with one in 1998 and population of Other Plains increased by 1.23 times. People migrated to Phnom Penh, the capital, and one of the big centers of industrial and commercial development, from other region (see analytical report of Migration for details).

Figure 1.8 Percent Distribution of Population and Economically Active Population (Aged 15 and over) by Region, 1998 and 2008





The proportion of Population in Phnom Penh and Tonle Sap region increased, and that in Plateau/Mountains slightly increased, and that in Other Plains decreased. This tendency is more clearly observed in the economically active population who aged 15 and over. The proportion of economically active population increased in Tonle Sap (center of tourism) and Phnom Penh, and decreased in Other Plains (Figure 1.8).

Table 1.8 shows the economically active rate of regions and provinces. Although the employment rate of Cambodia has slightly increased from 1998 to 2008, as seen in Table 1.5, one thirds of provinces have decreased their economically active rate. The increase of the female employment rate is remarkable in the provinces such as Kampong Thom and Kratie. There are some provinces such as Koh Kong and Pailin where the economically active rate has gone up a little on the whole, because male economically active rate has decreased, and the female rate has sharply increased.