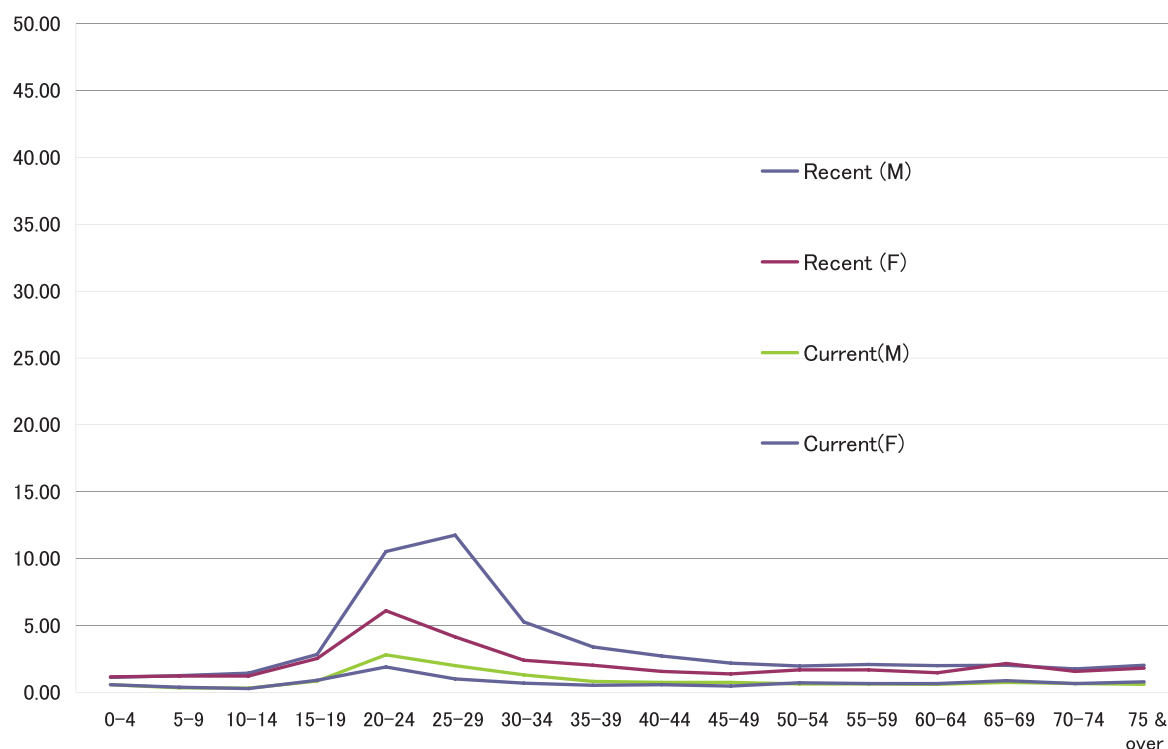
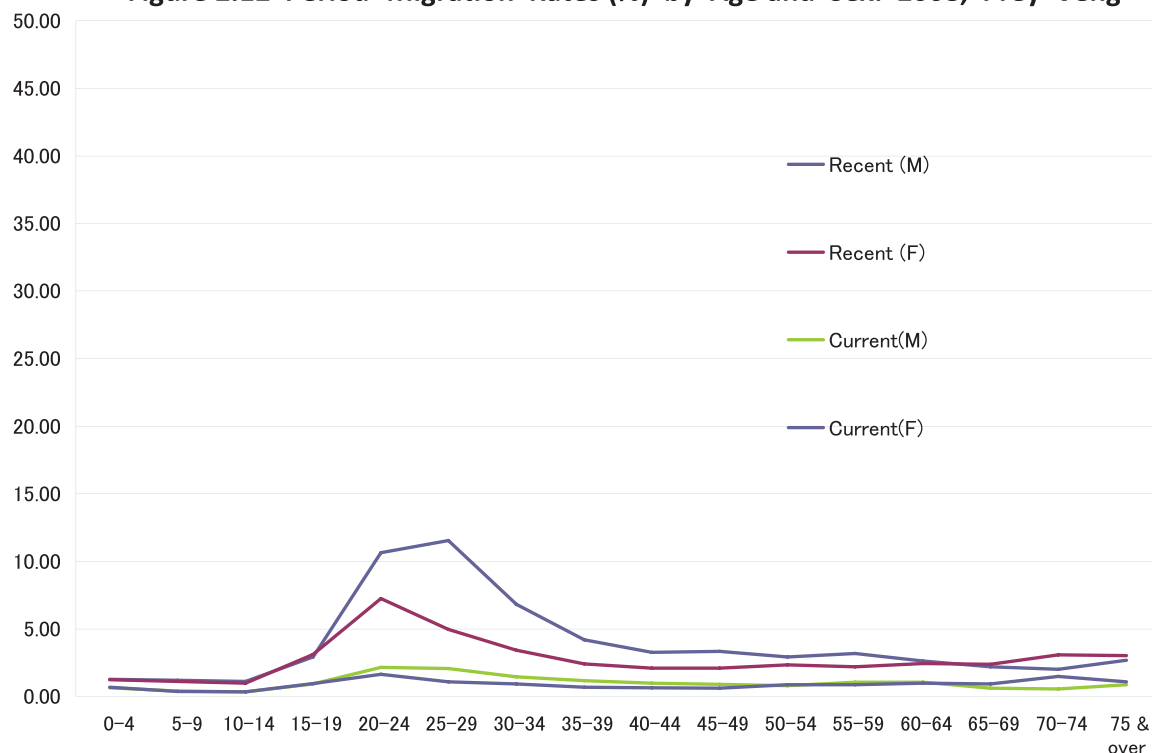


**Figure 2.11 Period- Migration Rates (%) by Age and Sex: 2008, Takeo**



**Figure 2.12 Period- Migration Rates (%) by Age and Sex: 2008, Prey Veng**



## 2.2 CHARACTERISTICS AND MOBILITY OF MIGANTS BY LITERACY AND EDUCATIONAL ATTAINMENT

## 2.2.1 Characteristics and Mobility of Migrants by Literacy

Overall migration rate for all durations of the persons aged 7 years old and over in Cambodia recorded 30% for both sexes in 2008. It was 31.5% for males and 28.6% for females. Dividing them into “literate” who can read and write the words of Khmer or any other country’ language and “illiterate” who cannot write nor read the word of any language, 78.3% of the persons were classified into literates, while 21.7% into illiterates. According to Table 2.3, the overall migration rate of literates is 30.9%, while that of illiterates is 26.7%. It can be said that literates are more mobile than illiterates. However, the difference in the migration rate between literates and illiterates is larger in males than in females. Comparing age-specific migration rates between literates and illiterates the rates for illiterates are higher at younger ages, but lower at any ages after ages 25 and over than for literates not only in males but also in females.

**Table 2.3 Overall Migration Rates (All Durations) by Literacy, Age and Sex: 2008, Camb**

	Both sexes			Males			Females		
	Total	Literates	Illiterates	Total	Literates	Illiterates	Total	Literates	Illiterates
<b>Total aged 7 &amp; over</b>	<b>30.0</b>	<b>30.9</b>	<b>26.7</b>	<b>31.5</b>	<b>32.6</b>	<b>25.6</b>	<b>28.6</b>	<b>29.0</b>	<b>27.3</b>
7-9	7.3	7.0	7.7	8.9	8.7	9.2	5.6	5.4	6.0
10-14	11.7	11.3	15.3	11.7	11.4	14.8	11.6	11.2	16.0
15-19	20.3	20.2	21.4	19.0	19.0	19.8	21.7	21.5	22.9
20-24	32.1	33.3	25.9	32.4	33.2	26.1	31.9	33.4	25.8
25-29	36.8	39.1	27.7	40.1	41.9	30.1	33.6	36.0	26.3
30-34	40.9	44.0	30.8	45.9	48.4	33.9	36.3	39.3	29.0
35-39	43.0	45.7	33.0	48.2	50.6	35.5	38.1	40.4	31.6
40-44	43.3	46.3	34.7	49.1	51.6	37.4	38.2	40.6	33.5
45-49	43.9	47.3	36.1	48.7	51.5	38.3	39.8	42.8	35.1
50-54	44.6	47.6	36.3	50.2	52.1	39.7	40.9	43.8	35.3
55-59	42.3	45.6	34.2	47.1	48.7	37.0	38.9	42.4	33.5
60-64	39.3	43.3	31.9	43.0	44.8	33.7	36.6	41.6	31.5
65-69	37.1	41.8	31.5	40.5	42.3	33.1	34.8	41.0	31.1
70-74	34.4	39.6	29.8	37.2	39.6	30.2	32.5	39.5	29.6
75 & over	32.2	37.3	28.7	33.6	36.5	27.9	31.3	38.7	28.9

## 2.2.2 Characteristics and Mobility of Migrants by Educational Attainment

### 2.2.2.1 Characteristics and Mobility by Educational Attainment for whole

## Cambodia

Educational attainment in Cambodia is very low. 45.1% of the persons aged 15 and over completed primary school or above education in 2008. Only 3.1 % of the persons aged 15 and over completed secondary or above education. More than a half of adult population did not complete any school education. Among those aged 15 and over, 48.6% of overall migrants completed primary school or above education, while 5.8% completed secondary education or above. Accordingly, it can be said that overall migrants are slightly higher in level of educational attainment than non-migrants. (Table 2.4)

**Table 2.4 Sex Ratios and Percentages of Population and Overall Migrants aged 15 and over: 2008, Cambodia**

Education Level	Both sexes		Males		Females		Both sexes		Males		Females		Sex ratio	
	Population	Migrants	Population	Migrants	Population	Migrants	Population	Migrants	Population	Migrants	Population	Migrants	Population	Migrants
Total	8,881,890	3,168,223	4,201,248	1,594,800	4,680,642	1,573,423	100.0	100.0	100.0	100.0	100.0	100.0	89.8	101.4
None*	2,168,738	687,340	700,832	230,032	1,467,906	457,308	24.4	21.7	16.7	14.4	31.4	29.1	47.7	50.3
Primary not completed	2,797,215	938,751	1,265,558	440,877	1,531,657	497,874	31.5	29.6	30.1	27.6	32.7	31.6	82.6	88.6
Primary	2,127,092	725,686	1,150,010	406,220	977,082	319,466	23.9	22.9	27.4	25.5	20.9	20.3	117.7	127.2
Lower secondary	1,506,002	627,500	899,140	388,612	606,862	238,888	17.0	19.8	21.4	24.4	13.0	15.2	148.2	162.7
Secondary or above	276,472	184,857	181,472	126,215	95,000	58,642	3.1	5.8	4.3	7.9	2.0	3.7	191.0	215.2
Other	5,705	3,625	3,856	2,572	1,849	1,053	0.1	0.1	0.1	0.2	0.0	0.1	208.5	244.3
Not stated	516	341	300	204	216	131	0.0	0.0	0.0	0.0	0.0	0.0	138.9	155.7

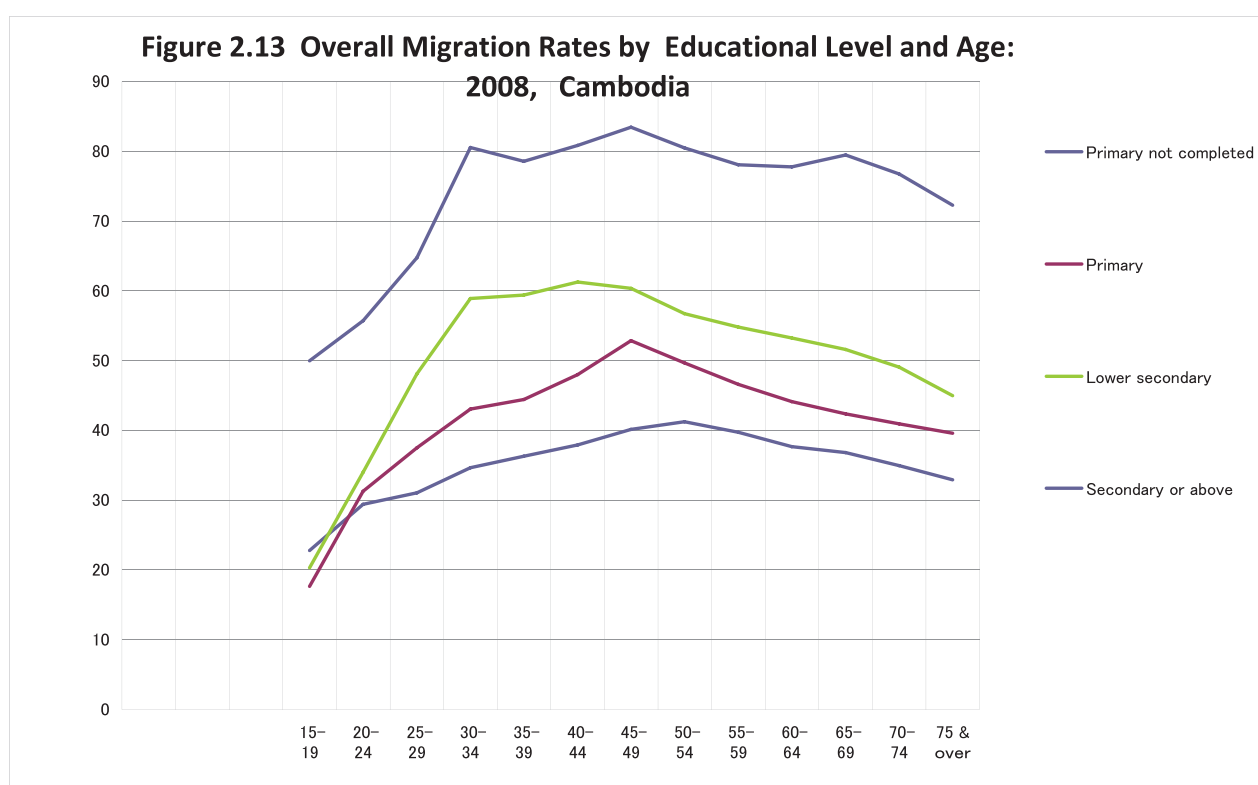
Spatial mobility of that population relates with the level of their educational attainment. According to Table 2.5 overall migration rate for all durations indicated 31.7% for never attended school, 33.6% for primary school not yet completed, 34.1% for primary school completed, 41.7% for lower secondary, and 66.9% for secondary or above. Such pattern as observed above is recognized for females as well as for males although the mobility by level of educational attainment indicates higher for males than for females at any levels.

**Table 2.5 Migraiton Rates (All Durations) by Level of Education, Age and Sex: 2008, Cambodia**

Age group	Total population	None*	Primary not completed	Primary	Lower secondary	Secondary or above	Other	Not stated
<b>Both sexes</b>	<b>35.7</b>	<b>31.7</b>	<b>33.6</b>	<b>34.1</b>	<b>41.7</b>	<b>66.9</b>	<b>63.5</b>	<b>66.1</b>
15-19	20.3	20.2	22.8	17.6	20.3	50.0	43.3	50.0
20-24	32.1	33.3	29.4	31.3	34.0	55.7	52.9	54.1
25-29	36.8	39.1	31.0	37.5	48.1	64.7	66.1	81.3
30-34	40.9	44.0	34.7	43.1	58.9	80.5	79.1	71.0
35-39	43.0	45.7	36.3	44.4	59.4	78.6	76.5	69.1
40-44	43.3	46.3	37.9	48.0	61.3	80.8	78.0	71.7
45-49	43.9	47.3	40.1	52.9	60.3	83.4	67.6	64.1
50-54	44.6	47.6	41.2	49.7	56.7	80.5	70.7	76.0
55-59	42.3	45.6	39.7	46.6	54.8	78.0	60.7	69.0
60-64	39.3	43.3	37.7	44.2	53.2	77.7	56.3	76.9
65-69	37.1	41.8	36.8	42.4	51.6	79.5	55.3	50.0
70-74	34.4	39.6	34.9	40.9	49.0	76.7	59.2	61.5
75 & over	32.2	37.3	32.9	39.6	44.9	72.3	51.9	46.4
<b>Males</b>	<b>38.0</b>	<b>39.1</b>	<b>34.8</b>	<b>35.3</b>	<b>43.2</b>	<b>69.6</b>	<b>66.7</b>	<b>68.0</b>
15-19	19.0	19.0	21.0	16.4	19.6	51.3	47.0	54.8
20-24	32.4	33.2	28.9	30.6	33.2	57.2	55.8	55.1
25-29	40.1	41.9	33.3	38.9	48.7	65.9	66.5	77.1
30-34	45.9	48.4	37.9	45.5	60.5	82.1	82.5	70.6
35-39	48.2	50.6	40.1	46.9	61.4	80.4	84.4	72.2
40-44	49.1	51.6	41.4	51.0	64.0	82.5	84.0	72.7
45-49	48.7	51.5	43.4	54.8	63.1	84.6	73.6	66.7
50-54	50.2	52.1	45.3	51.6	59.9	81.6	73.4	100.0
55-59	47.1	48.7	42.8	46.7	56.4	77.8	62.2	83.3
60-64	43.0	44.8	38.9	43.2	53.2	77.7	58.7	75.0
65-69	40.5	42.3	37.0	41.3	51.3	80.3	56.0	-
70-74	37.2	39.6	34.6	39.8	49.3	76.4	62.4	100.0
75 & over	33.6	36.5	32.1	38.5	44.3	70.5	54.0	37.5
<b>Females</b>	<b>33.6</b>	<b>31.2</b>	<b>32.5</b>	<b>32.7</b>	<b>39.4</b>	<b>61.7</b>	<b>56.9</b>	<b>60.6</b>
15-19	21.7	23.1	24.7	19.0	21.1	48.7	38.1	28.6
20-24	31.9	26.5	29.8	31.9	35.3	53.7	47.3	52.0
25-29	33.6	27.2	29.2	36.0	47.2	62.5	65.3	88.9
30-34	36.3	30.2	32.2	40.2	56.0	76.3	70.6	71.4
35-39	38.1	32.6	33.7	41.3	55.7	73.3	54.6	63.2
40-44	38.2	34.3	35.5	43.2	55.9	75.5	65.9	70.0
45-49	39.8	35.8	37.4	49.9	56.1	79.6	58.8	60.0
50-54	40.9	36.3	38.5	47.4	53.1	78.1	67.0	62.5
55-59	38.9	34.4	37.6	46.3	52.3	78.6	58.6	58.8
60-64	36.6	32.3	36.6	45.9	53.3	78.1	52.0	80.0
65-69	34.8	31.8	36.6	45.2	52.4	76.2	53.4	-
70-74	32.5	30.5	35.5	44.8	48.4	78.5	46.6	37.5
75 & over	31.3	29.8	34.2	43.3	46.7	78.9	37.5	50.0

\* includes "iraterates" and "none" in level of education".

Figure 2.13 depicts the curves of age-specific overall migration rates of the persons aged 15 and over by level of education as of 2008. Observing the Figure, positive relationship between the migration rate and level of educational attainment at each age can be seen. Table 2.3 shows, also, the difference in the mobility between males and females by level of education, which presents higher for males than for females at each age. The age group showing the highest rate is located at 50-54 for primary not completed (41.2%), at 45-49 for primary (52.9%), at 40-44 for lower secondary (61.3%), and at 45-49 for secondary or above (83.4%). From the findings as described above it can be said that the higher in level of educational attainment the stronger in spatial mobility.



#### 2.2.2.2 Characteristics and Mobility by Educational Attainment for Province

Table 2 6 presents the percentages of the persons aged 15 years and over by level of educational attainment for 24 provinces as of 2008. According to the table, overall migration rates of total overall migrants distribute widely between Pailin with the highest (90.6 %) and Prey Veng with the lowest (14.0 %). The rates of “illiterates & none”, “primary not completed”, “primary” and “lower secondary” present also similar range between the highest and the lowest. For “illiterates & none” the range is between the highest (96.3%) for Pailin and the lowest (13.9%) for Prey Veng. In each level of education Pailin shows the highest and Prey Veng does the lowest. Phnom Penh, or