

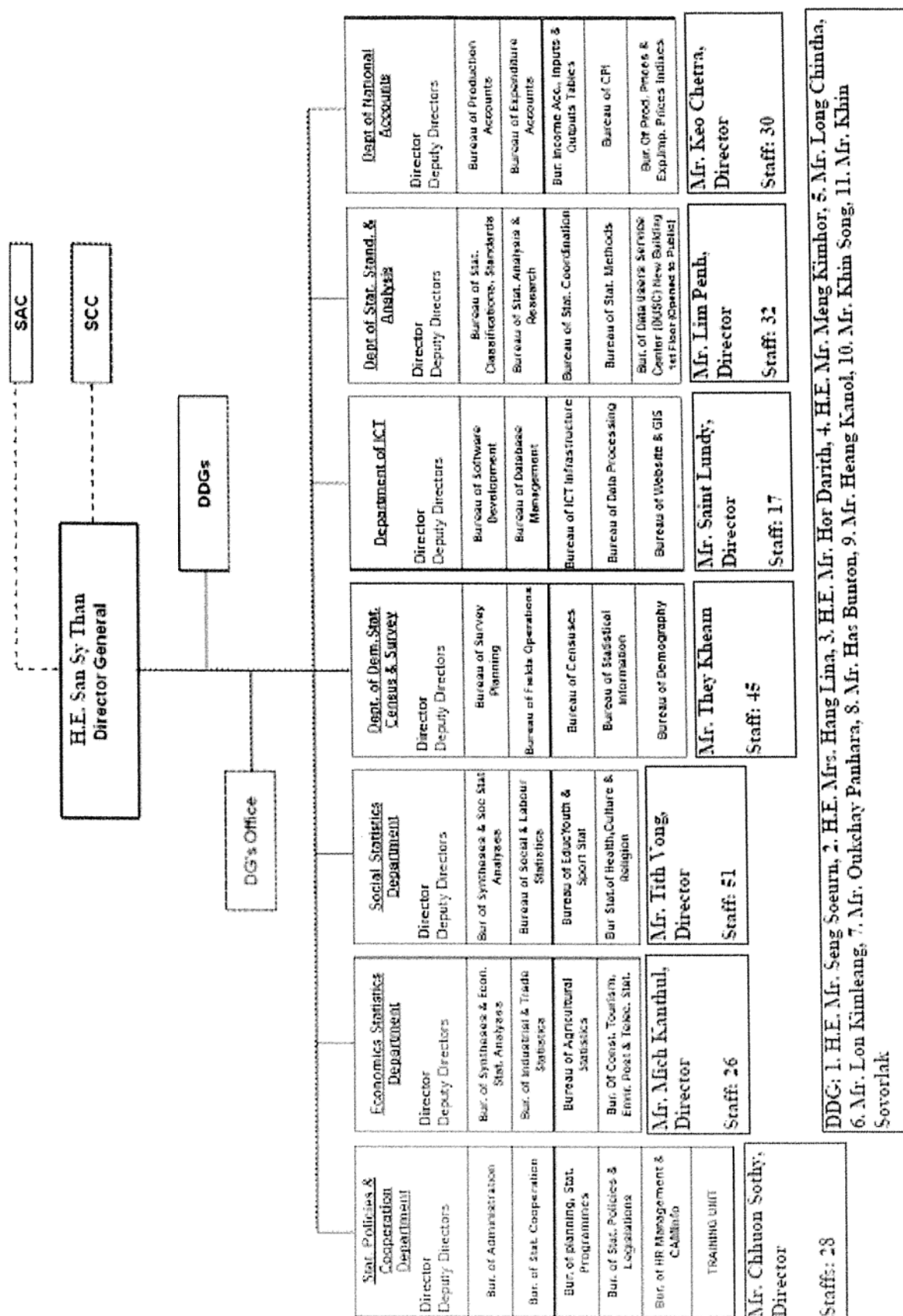
Annex 1 : Schedule of the Mid-Term Review Study

Dec.	Day	Activities
2 nd	Sun	Arrival in Phnom Penh
3 rd	Mon	09:00-10:30 Interview with JICA Expert, Mr. Fumihiko Nishi 10:30-11:00 Interview with Mr. San Sy Than, DG, NIS 14:00-16:00 Interview with Mr. Khin Sovorlak, DDG, NIS 16:00-17:00 Interview with Mr. Hor Darith, DDG, NIS
4 th	Tue	09:00-11:00 Visiting Kandal Provincial Department of Planning, Mr.Min Chhun, Director, Mr.Chan Dara, Deputy Director and Mr. Pan Sarith, Bureau Chief of Planning, Mr.Prok Saboeurn, Bureau Chief of Planning 14:00-15:00 Interview with Mr. So Tonnere, DD, NIS 15:00-16:00 Interview with Mr. They Kheam, Director, NIS
5 th	Wed	08:30-10:30 Attending 2013 Inter-censal Population Survey 6th Technical Committee (CIPS2013-TC) 11:00-12:00 Interview with UNFPA Cambodia Officers 14:00-15:00 Interview with Mr. Lay Sophat, DD, NIS 15:00-16:00 Interview with SIDA Project Chief Advisor 16:00-17:00 Interview with Mr. Sin Sereyvuth, DD, NIS
6 th	Thu	10:00-11:00 Interview with Mr. Akihiko Ito, JICA Expert 11:00-12:00 Interview with Mr. Akihito Yamauchi, JICA Expert 14:00-15:00 Interview with Mr. Fumihiko Nishi, Chief Adviser 15:00-16:00 Interview with Mr. Hiromi Mizuta, JICA Expert
7 th	Fri	09:30-10:30 Interview with Prof. Nobuo Hirohata, JICA Expert 10:30-11:30 Interview with Mr. Kim Net, DD, NIS 14:00-16:00 Visiting Kampong Chhnang Provincial Department of Planning
8 th	Sat	Documentation
9 th	Sun	Documentation
10 th	Mon	Cambodia National Holiday Interview with JICA Experts
11 th	Tue	09:00-12:00 the First Meeting with NIS senior officials 14:00-15:00 Interview with Mr. Tuon Thavrak, DG of Planning, MoP
12 th	Wed	11:00-12:00 Visiting Kampong Thom Provincial Department of Planning
13 th	Thu	09:30-10:30 Interview with Ministry of Economy and Finance 11:00-14:00 Discussion with JICA experts 14:30-15:30 Courtesy call on H.E. Mr. Chhay Than, Senior Minister, Minister of Planning 16:00-17:00 Discussion with/in JICA Cambodia Office 16:00-16:30 Interview with Mr. Kong Sophat, Director of Logistics and Financial Dept., MoP 17:30-18:30 Interview with Mr. Ratanak Hav, Deputy Director, Dept. of Budget, MoEF
14 th	Fri	10:00-11:00 Courtesy call on Embassy of Japan Documentation (Final draft of the Review report) 15:00-18:00 JCC, Signing of M/M
15 th	Sat	Leaving Phnom Penh

天: 30

50

Annex 2 : NIS Organizational Chart



(note) The number of staff allocation is based on interviews with the C/Ps.

Annex 3 : Lists of the Related Committee Member

**Composition of the National Census Committee
for the 2011 Economic Census of Cambodia (NCC)**

1. Minister of Planning	Chairman
2. Secretary of State, Ministry of Economy and Finance	Vice chairman
3. Secretary of State, Ministry of Interior	Vice chairman
4. Secretary of State, Ministry of Planning	Permanent vice chairman
5. Secretary of State, Council of Ministers	Member
6. Secretary of State, Ministry of Industry, Mines and Energy	Member
7. Secretary of State, Ministry of Commerce	Member
8. Secretary of State, Ministry of Education, Youth and Sports	Member
9. Secretary of State, Ministry of Health	Member
10. Secretary of State, Ministry of Labor and Vocational Training	Member
11. Secretary of State, Ministry of Land Management, Urbanization and Construction	Member
12. Secretary of State, Ministry of Post and Telecommunication	Member
13. Secretary of State, Ministry of Information	Member
14. Secretary of State, Ministry of Public Works and Transports	Member
15. Secretary of State, Ministry of Tourism	Member
16. Secretary of State, Ministry of Social Affairs, Veterans and Youth Rehabilitation	Member
17. Secretary of State, Ministry of Culture and Fine Arts	Member
18. Secretary of State, Ministry of Women's Affairs	Member
19. Secretary of State, Secretariat of Civil Aviation	Member
20. Secretary General, Council for Development of Cambodia	Member
21. Vice Governor, National Bank of Cambodia	Member
22. Director General, National Institute of Statistics, Ministry of Planning	Secretary

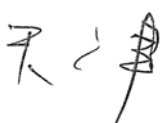


**Composition of the Census Technical Committee
for the 2011 Economic Census of Cambodia (CTC)**

1. Secretary of State, Ministry of Planning	Chairman
2. Under Secretary of State, Ministry of Planning	Vice chairman
3. Director General, NIS, Ministry of Planning	Permanent Member
4. Chief of Cabinet, Ministry of Planning	Member
5. Deputy Director General, Taxation Department, Ministry of Economy and Finance	Member
6. Director of Department, Ministry of Industry, Mines and Energy	Member
7. Director of Department, Ministry of Commerce	Member
8. Deputy Director General, Ministry of Tourism	Member
9. Director of Department, Cambodia Development Council	Member
10. Deputy Director General, NIS, Ministry of Planning	Member
11. Director, Economic Statistics Department, NIS	Secretary

**Composition of the Provincial Census Committee
for the 2011 Economic Census of Cambodia (PCC)**

1. Governor of Capital/Province	Chairman
2. Deputy Governor of Capital/Province	Vice Chairman
3. Director of Planning Office of Capital/Province	Permanent Member
4. Director of Economy and Finance Office of Capital/Province	Member
5. Police Commissioner of Capital/Province	Member
6. Director of Industry, Mines and Energy Office of Capital/Province	Member
7. Director of Tourism Office of Capital/Province	Member
8. Director of Commerce Office of Capital/Province	Member
9. Director of Tax Office of Province	Member
10. Chief Cabinet of Capital/Provincial Hall	Member
11. One Representative from NIS	Member
12. Deputy Director of Capital/Provincial Planning Office, responsible for Statistics or Bureau Chief of Statistics	Secretary




**Composition of the National Steering Committee
for Census Information and Education Campaign (NSC)**

1. Secretary of State, Ministry of Planning	Chairman
2. Secretary of State, Ministry of Information	Vice Chairman
3. Director General, TVK	Vice Chairman
4. Director General, National Radio	Vice Chairman
5. Director General, Cambodian Press Agency	Vice Chairman
6. Director General, NIS, Ministry of Planning	Permanent Member
7. Representative, Ministry of Interior	Member
8. Representative, Ministry of Economy and Finance	Member
9. Representative, Ministry of Commerce	Member
10. Representative, Ministry of Industry, Mines, and Energy	Member
11. Representative, Ministry of Tourism	Member
12. Representative, Ministry of Education, Youth and Sports	Member
13. Representative, Ministry of Labor and Vocational Training	Member
14. Representative, Ministry of Social Affairs, Veteran and Youth Re-habilitation	Member
15. Representative of Ministry of Religions and Culture	Member
16. Representative of Ministry of Culture and Fine Arts	Member
17. Deputy Director General, NIS, MOP	Secretary

7 2 3

5/1

Annex 4 : Lists of Equipment Provided

List of Equipment for 6 PDPs (FY2011 Procurement purchased by the Government Team)							
Year	No	Name of Item	Maker/Model	User (Location)	Quantity	Unit Price (US\$)	Total Price (US\$)
FY2011	1	Desktop PC	Dell Optiplex 380n MT	2 units of each item are being used in each Statistics Office of Provincial Department of Planning in the province, such as Kandal, Takeo, Preah Sihanouk, Kampong Cham, Siem Reap and Battambang (12 units in total).	12	572	6,864
FY2011	2	Microsoft License	Window-7		12	161	1,932
FY2011	3	Microsoft License	Office Pro 2010		12	349	4,188
FY2011	4	Internet Security	Internet Security		12	15	180
FY2011	5	Printer	HP Color Laserjet CP2025dn Printer	1 unit is being used in each Statistics Office of Provincial Department of Planning in the province, such as Kandal, Takeo, Preah Sihanouk, Kampong Cham, Siem Reap and Battambang (6 units in total). Rest of 6 units are being used in NIS central office.	12	866	10,392
FY2011	6	External Hard Disk	500GB	1 unit is being used in each Statistics Office of Provincial Department of Planning in the province, such as Kandal, Takeo, Preah Sihanouk, Kampong Cham, Siem Reap and Battambang (6 units in total).	6	72	432
FY2011	7	Flash Drive	Transcend Jet Flash, 4GB	2 units are being used in each Statistics Office of Provincial Department of Planning in the province, such as Kandal, Takeo, Preah Sihanouk, Kampong Cham, Siem Reap and Battambang (12 units in total).	12	8	96
FY2011	8	Copier	Toshiba copy machine	1 unit of each item is being used in each Statistics Office of Provincial Department of Planning in the province, such as Kandal, Takeo, Preah Sihanouk, Kampong Cham, Siem Reap and Battambang (6 units in total).	6	970	5,820
FY2011	9	Projector	LCD Projector		6	927	5,562
FY2011	10	Screen	2.13m x 2.13m Movable		6	135	810
FY2011	11	Pointer	2.4Ghz Wireless Pointer		6	47	282
FY2011	12	UPS	Power Tru 650VA UPS	2 units of each item are being used in each Statistics Office of Provincial Department of Planning in the province, such as Kandal, Takeo, Preah Sihanouk, Kampong Cham, Siem Reap and Battambang (12 units in total).	12	32	384
FY2011	13	Acrobat	Acrobat Professional 10 Win IEA00 License with DVD Set		12	449	5,388
FY2011	14	Acrobat	Acrobat Professional DVD Set		12	44	528
FY2011	15	Scanner	HP scan Jet Photo scanner	1 unit is being used at SAS central office in NIS	1	174	174
FY2011	16	USB Modem	Metfone USB Internet Modem	2 units of each item are being used in each Statistics Office of Provincial Department of Planning in the province, such as Kandal, Takeo, Preah Sihanouk, Kampong Cham, Siem Reap and Battambang (12 units in total).	12	35	420
FY2011	17	Table	DE 48+G		12	149	1,788
FY2011	18	Chair	SG138		12	45	540
FY2011	19	Whiteboard	1.2m x 2m, Movable	1 unit is being used in each Statistics Office of Provincial Department of Planning in the province, such as Kandal, Takeo, Preah Sihanouk, Kampong Cham, Siem Reap and Battambang (6 units in total).	6	70	420
Total Price							46,200

718

ST

List of Equipment for 9 PDPs (FY2011 Procurement purchased by the Non Governmental Team)							
Year	No	Name of Item	Maker/Model	User (Location)	Quantity	Unit Price (US\$)	Total Price (US\$)
FY2011	1	Desktop PC	Dell Optiplex 790 MT	2 units of each item are being used in each Statistics Office of Provincial Department of Planning in the province, such as Kampong Chhnang, Pursat, Pailin, Banteay Meanchey, Kampong Thom, Kratie, Mondulkiri, Kep & Koh Kong (18 units in total).	18	616	11,088
FY2011	2	Microsoft License	Window-7		18	154	2,772
FY2011	3	Microsoft License	Office Pro 2010		18	344	6,192
FY2011	4	Internet Security	Internet Security		18	11	198
FY2011	5	Printer	HP Color Laserjet CP2025dn Printer	1 unit of each item is being used in each Statistics Officer of Provincial Department of Planning in the province, such as Kampong Chhnang, Pursat, Pailin, Banteay Meanchey, Kampong Thom, Kratie, Mondulkiri, Kep & Koh Kong (9 units in total).	9	935	8,415
FY2011	6	External Hard Disk	500GB		9	100	900
FY2011	7	Flash Drive	Transcend Jet Flash, 4GB	2 units of each item are being used in each Statistics Office of Provincial Department of Planning in the province, such as Kampong Chhnang, Pursat, Pailin, Banteay Meanchey, Kampong Thom, Kratie, Mondulkiri, Kep & Koh Kong (18 units in total).	18	11	198
FY2011	8	Copier	Toshiba copy machine	1 unit of each item is being used in each Statistics Office of Provincial Department of Planning in the province, such as Kampong Chhnang, Pursat, Pailin, Banteay Meanchey, Kampong Thom, Kratie, Mondulkiri, Kep & Koh Kong (9 units in total).	9	1,610	14,490
FY2011	9	Projector	LCD Projector		9	920	8,280
FY2011	10	Screen	2.13m x 2.13m Movable		9	145	1,305
FY2011	11	Pointer	2.4Ghz Wireless Pointer		9	47	423
FY2011	12	UPS	Power Tru 650VA UPS	2 units of each item are being used in each Statistics Office of Provincial Department of Planning in the province, such as Kampong Chhnang, Pursat, Pailin, Banteay Meanchey, Kampong Thom, Kratie, Mondulkiri, Kep & Koh Kong (18 units in total).	18	35	630
FY2011	13	Acrobat	Acrobat Professional 10 Win IEA00 License with DVD Set		18	492	8,856
FY2011	14	USB Modem	Metfone USB Internet Modem		18	35	630
FY2011	15	Table	OD-IC, Size: 700 x 1200 x 750mm		18	135	2,430
FY2011	16	Chair	K338 Size: 590 x 920mm		18	45	810
FY2011	17	Whiteboard	1.2m x 2m, Movable	1 unit of each item is being used in each Statistics Office of Provincial Department of Planning in the province, such as Kampong Chhnang, Pursat, Pailin, Banteay Meanchey, Kampong Thom, Kratie, Mondulkiri, Kep & Koh Kong (9 units in total).	9	65	585
FY2011	18	Tonner	Set for Printer (CP2025dn)		9	450	4,050
FY2011	19	Tonner	Set for Copier (Toshiba T1810D)		9	90	810
Total Price							73,062

20

20

Name	Technical Field	Term of Assignment																																						
Name	Technical Field	From	to	Assign ment (Man. Month)	2010												2011												2012											
					10	11	12	1	2	3	4	5	6	7	8	9	10	11	12	1	2	3	4	5	6	7	8	9	10	11	12									
Mr. Fumihiko Nishi	Chief Advisor	10/05/10	10/31/10	0.73	■																																			
		11/23/10	12/19/10	0.73		■																																		
		02/02/11	03/20/11	1.53				■	■	■	■																													
		05/05/11	06/10/11	1.07							■	■																												
		08/02/11	09/25/11	1.80								■	■	■	■																									
		11/13/11	12/25/11	1.40												■	■	■																						
		02/05/12	03/18/12	1.40														■	■	■																				
		04/21/12	05/30/12	1.27																■	■	■																		
		08/05/12	09/29/12	1.83																		■	■	■	■	■														
		11/11/12	12/23/12	1.40																						■	■	■												
	Total	13.17																																						
Mr. Kiyomi Shirakawa	Data Processing/ Programing	10/09/10	10/23/10	0.47	■																																			
		02/27/11	03/20/11	0.70				■	■																															
		05/22/11	06/10/11	0.63							■	■																												
		11/27/11	12/10/11	0.43												■	■																							
		Total	2.23																																					
Mr. Satoshi Inai	Data Processing/ Programing	12/08/10	12/19/10	0.37			■	■																																
	Total	0.37																																						
Mr. Akinori Sato	Data Processing/ Programing	02/27/11	03/20/11	0.70				■	■																															
	Total	0.70																																						
Ms. Eri Hirota	Data Processing/ Programing	11/27/11	12/10/11	0.43														■	■																					
		03/01/12	03/14/12	0.43																■	■																			
		05/17/12	05/30/12	0.43																		■	■																	
		Total	1.30																																					
Mr. Hiromu Harada	Data Processing/ Programing	03/01/12	03/14/12	0.43																■	■																			
	Total	0.43																																						
Ms. Yumi Nunenobu	Data Processing/ Programing	05/17/12	05/30/12	0.43																																				

Name	Technical Field	Term of Assignment																							
		From	to	Assign Total (Man. Month)	2010			2011												2012					
					10	11	12	1	2	3	4	5	6	7	8	9	10	11	12	1	2	3	4	5	6
Mr. Yasuo Ishida	Census/Survey Planning/Small Area Statistics	10/10/10	12/19/10	2.33																					
		01/02/11	03/19/11	2.53																					
		05/16/11	07/23/11	2.27																					
		08/02/11	09/10/11	1.30																					
		10/01/11	11/05/11	1.17																					
		11/26/11	12/02/11	0.20																					
		01/09/12	01/20/12	0.37																					
		02/15/12	03/16/12	1.00																					
		Total		11.17																					
Mr. Hiromi Mizuta	Project Coordination/Small Area Statistics	10/10/12	10/28/12	0.60																					
		11/28/10	12/18/10	0.67																					
		01/13/11	03/18/11	2.13																					
		05/16/11	07/02/11	1.57																					
		09/07/11	11/05/11	1.97																					
		11/20/11	12/21/11	1.03																					
		01/19/12	04/12/12	2.15																					
		06/03/12	09/07/12	3.20																					
		09/17/12	10/13/12	0.87																					
		11/04/12	12/18/12	1.47																					
		Total		15.65																					
Ms. Emi Harada	Project Coordination	10/10/12	10/29/12	0.63																					
		08/02/11	08/17/11	0.50																					
		03/29/12	04/11/12	0.43																					
		Total		1.57																					
Mr. Eishi Yasunaga	Data Analysis	10/10/10	10/17/10	0.23																					
		08/07/11	08/09/11	0.07																					
		10/23/11	11/02/11	0.33																					
		03/07/12	03/11/12	0.13																					
		07/14/12	07/25/12	0.37																					
		08/07/12	08/18/12	0.37																					
		09/16/12	09/22/12	0.20																					
		10/20/12	10/25/12	0.17																					
		11/11/12	11/18/12	0.23																					
		Total		2.10																					
Mr. Keiichi Yoshino	Data Processing	12/05/10	12/22/10	0.57																					
		Total		0.57																					
Mr. Jun Konishi	Mapping	08/02/11	08/28/11	0.87																					
		02/01/12	03/03/12	1.03																					
		08/19/12	08/26/12	0.23																					
		Total		2.13																					
Mr. Akihito Yamauchi	Data Processing/Scrutiny/Data Analysis/Small Area Statistics	08/21/11	09/18/11	0.93																					
		10/23/11	11/05/11	0.43																					
		11/30/11	12/24/11	0.80																					
		01/23/12	02/17/12	0.83																					
		03/04/12	04/06/12	1.10																					
		06/03/12	07/04/12	1.03																					
		08/12/12	09/15/12	1.13																					
		10/17/12	11/10/12	0.80																					
		Total		7.07																					
Mr. Hisatsugu Furukawa	Data Analysis	10/23/11	11/03/11	0.37																					
		07/09/12	07/21/12	0.40																					
		08/12/12	08/25/12	0.43																					
		09/17/12	09/22/12	0.17																					
		10/26/12	11/17/12	0.73																					
		Total		2.10																					
Mr. Kou Sakano	Data Analysis	10/23/11	11/03/11	0.37																					
		02/19/12	02/25/12	0.20																					
		07/09/12	07/20/12	0.37																					
		08/13/12	08/24/12	0.37																					
		09/17/12	09/22/12	0.17																					
		10/21/12	10/26/12	0.17																					
		11/14/12	11/25/12	0.37																					
		Total		2.00																					
Mr. Kazuhiro Fukuyo	Data Analysis	08/05/12	08/19/12	0.47																					
		Total		0.47																					
Mr. Mariko Murata	Data Processing/Scrutiny	07/15/12	08/11/12	0.90																					
		10/23/12	11/09/12	0.57																					
		Total		1.47																					
Ms. Tomoko Saito	Mapping	08/19/12	08/25/12	0.20																					
		Total		0.20																					
Mr. Joji Sawada	Census/Survey Planning/Small Area Statistics	07/01/12	07/28/12	0.90																					
		08/19/12	09/22/12	1.13																					
		10/28/12	11/24/12	0.90																					
		Total		2.93																					

7. 1. 7

55

Annex 6 : List of Counterparts participating training in Japan and technical exchange in Indonesia, Sri Lanka and Lao PDR.

Counterparts participating Training/Technical Exchange Programmes conducted overseas

Period/ duration	Programme	Country	Participants name, position and department
January 2011 (3 weeks)	Survey planning for the Inter-Censal Population Survey	Japan	1. Ms. Som Somalin, Bureau Chief, Dep. Demographic Stat., NIS 2. Moeung Kongkea, Bureau Chief, Dep. Demographic Stat., NIS 3. Nou Chanra, Vice Bureau Chief, Dep. Demographic Stat., NIS
January 2012 (3 weeks)	Data processing for the Inter-Censal Population Survey	Japan	1. Mr. Saint Lundy, Director, Dept. of ICT, NIS 2. Mr. Lay Sophat, DD, Dept. of ICT, NIS 3. Mr. Lim Penh, Director, Secretary of DG, NIS
September 2011 (5 days)	Technical exchange with the Statistics Indonesia on small area statistics	Indonesia	1. Mr. Lim Penh, Director, Secretary of DG, NIS 2. Mr. Kim Net, DD, Dept. of Social Stat., NIS 3. Mr. So Tonnere, DD, Dept. of Economic Stat., NIS
May 2011 (5 days)	Technical exchange with Sri Lankan Dept. of Census and Statistics on population census and economic census	Sri Lanka	1. Mr. Kim Net, DD, Dept. of Social Stat., NIS 2. Mr. So Tonnere, DD, Dept. of Economic Stat., NIS 3. Mr. Chao Pheav, DD, Dept. of ICT, NIS
November 2012 (5 days)	Technical exchange with Lao Statistics Bureau on population census, economic census and small area statistics	Lao PDR	1. H.E. Mr. Hor Darith, DDG, NIS 2. Mr. Khin Sovorlak, DDG, NIS 3. Mr. Kim Net, DD, Dept. of Social Stat., NIS

天 : 天

—