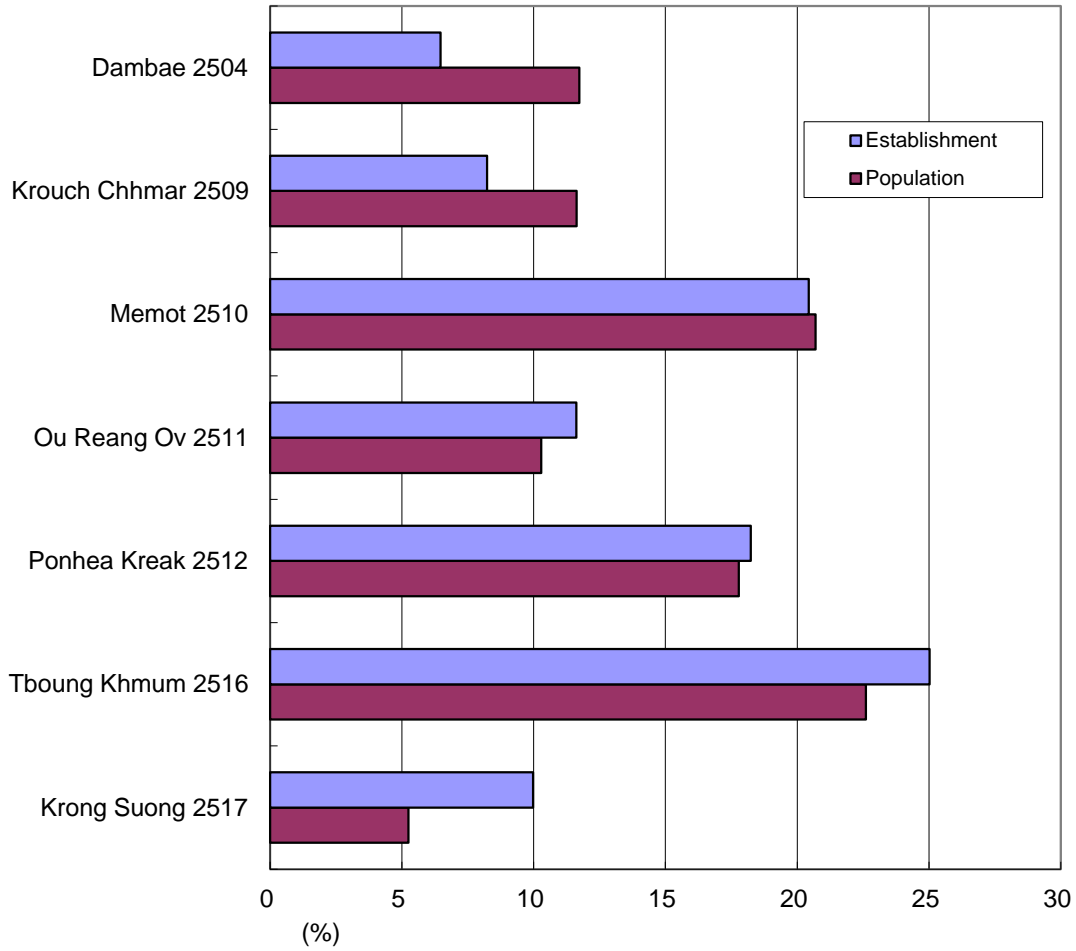
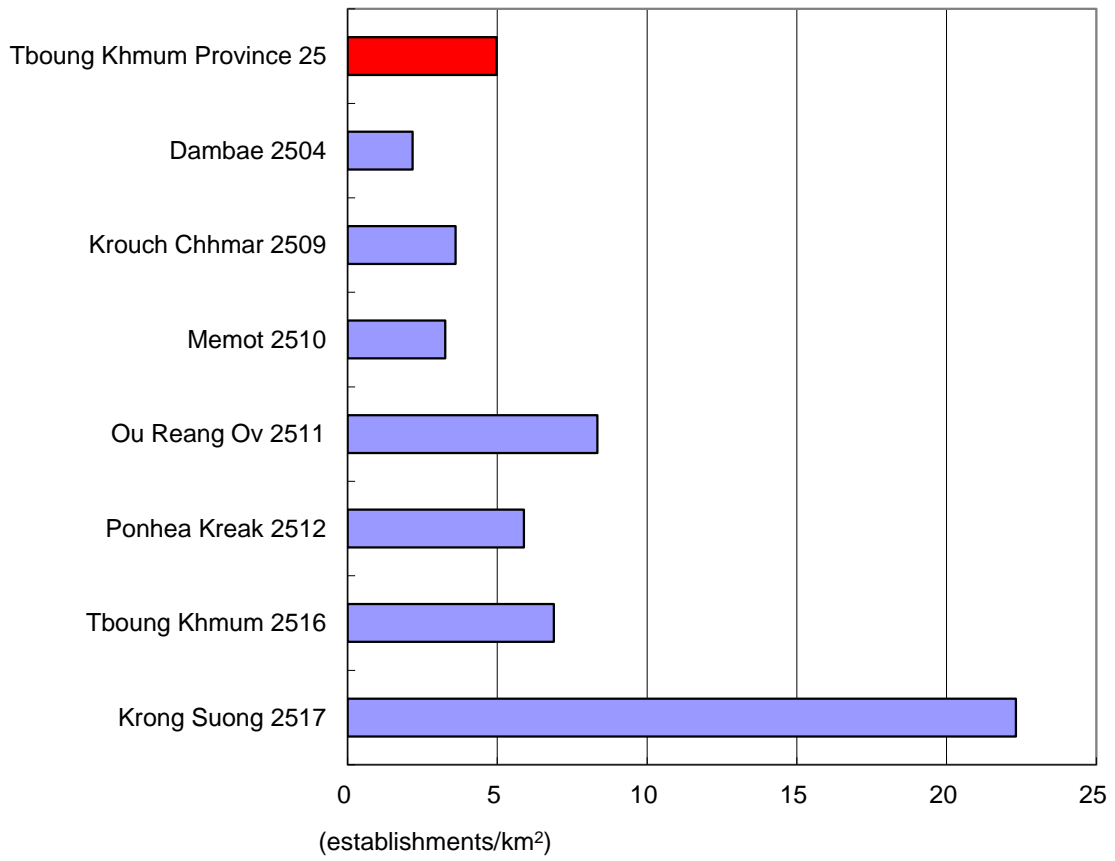


**Graph 1. Percent to Total Number of Establishments of Tboung Khmum by District (2011)  
and Percent to Total Population of Tboung Khmum by District (2011)**

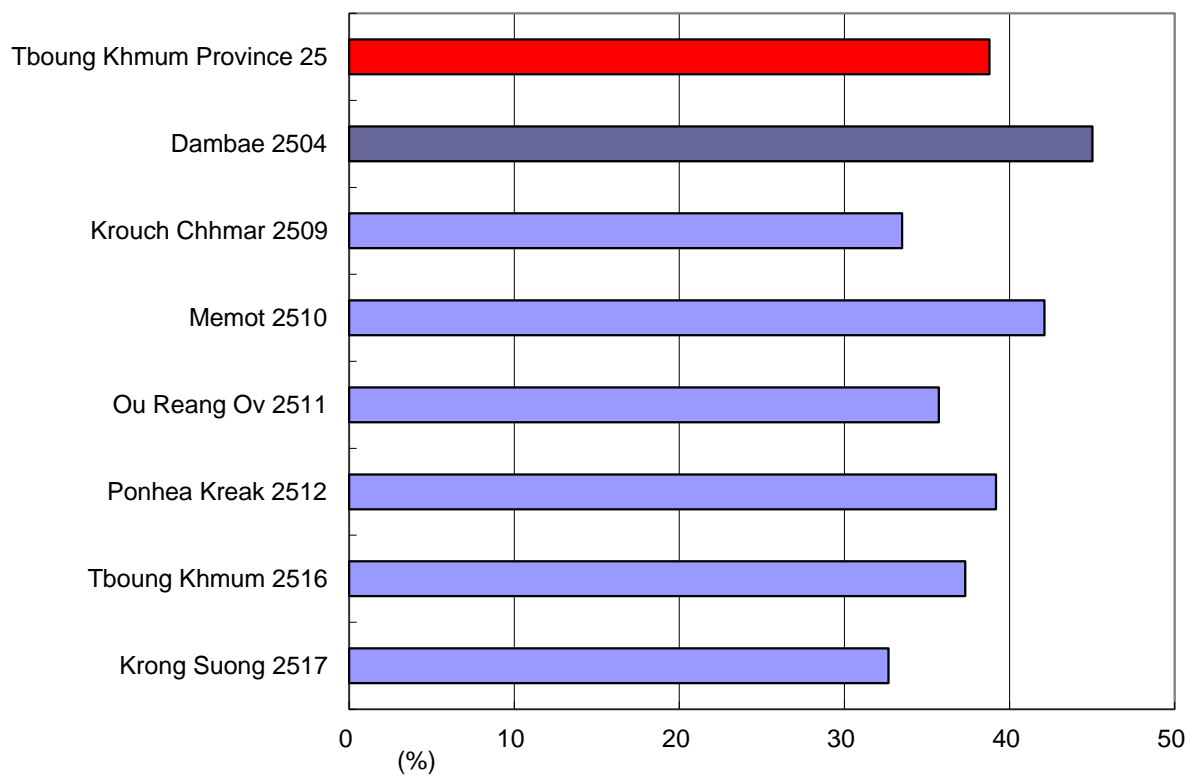


*\* The population projection for 2011 is used in this graph.*

**Graph 2. Establishment Density by District - Tboung Khmum (2011)**

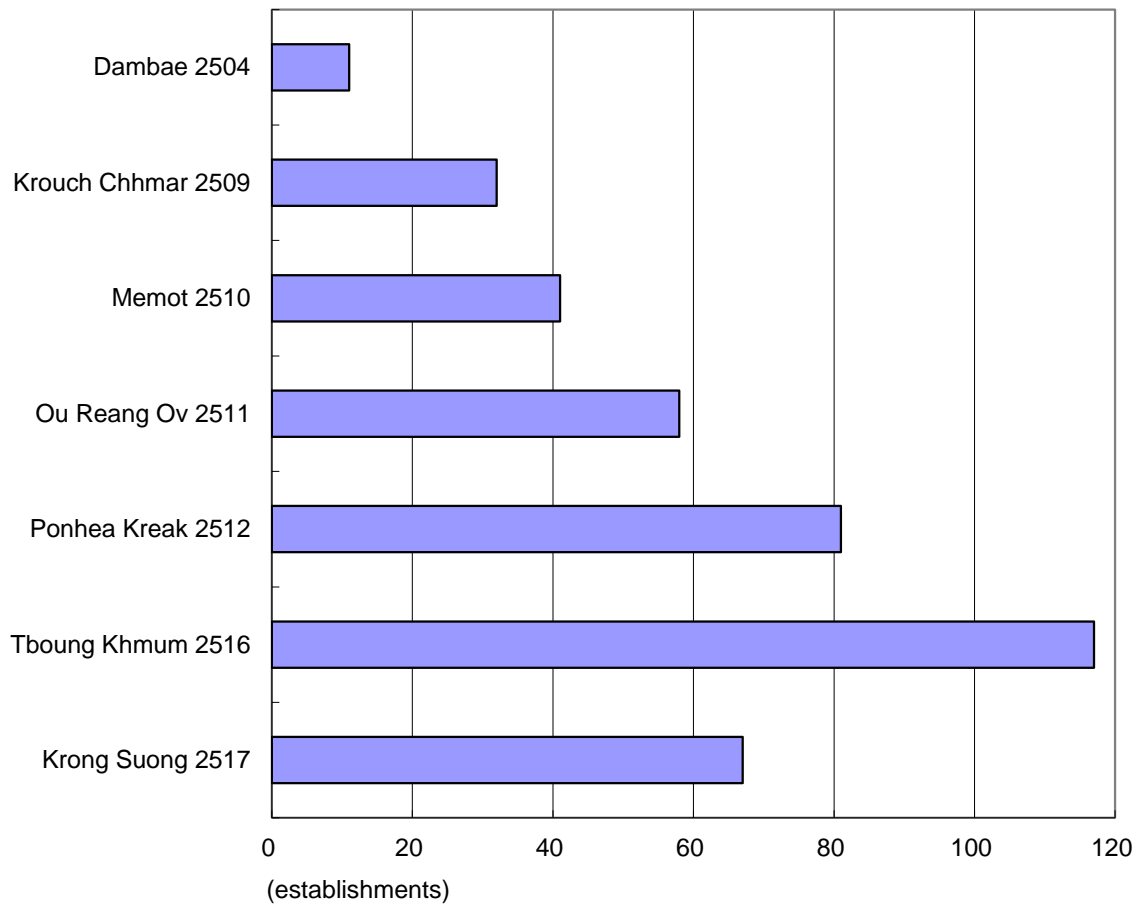


**Graph 3. Ratio of New Establishments by District - Tboung Khmum (2011)**

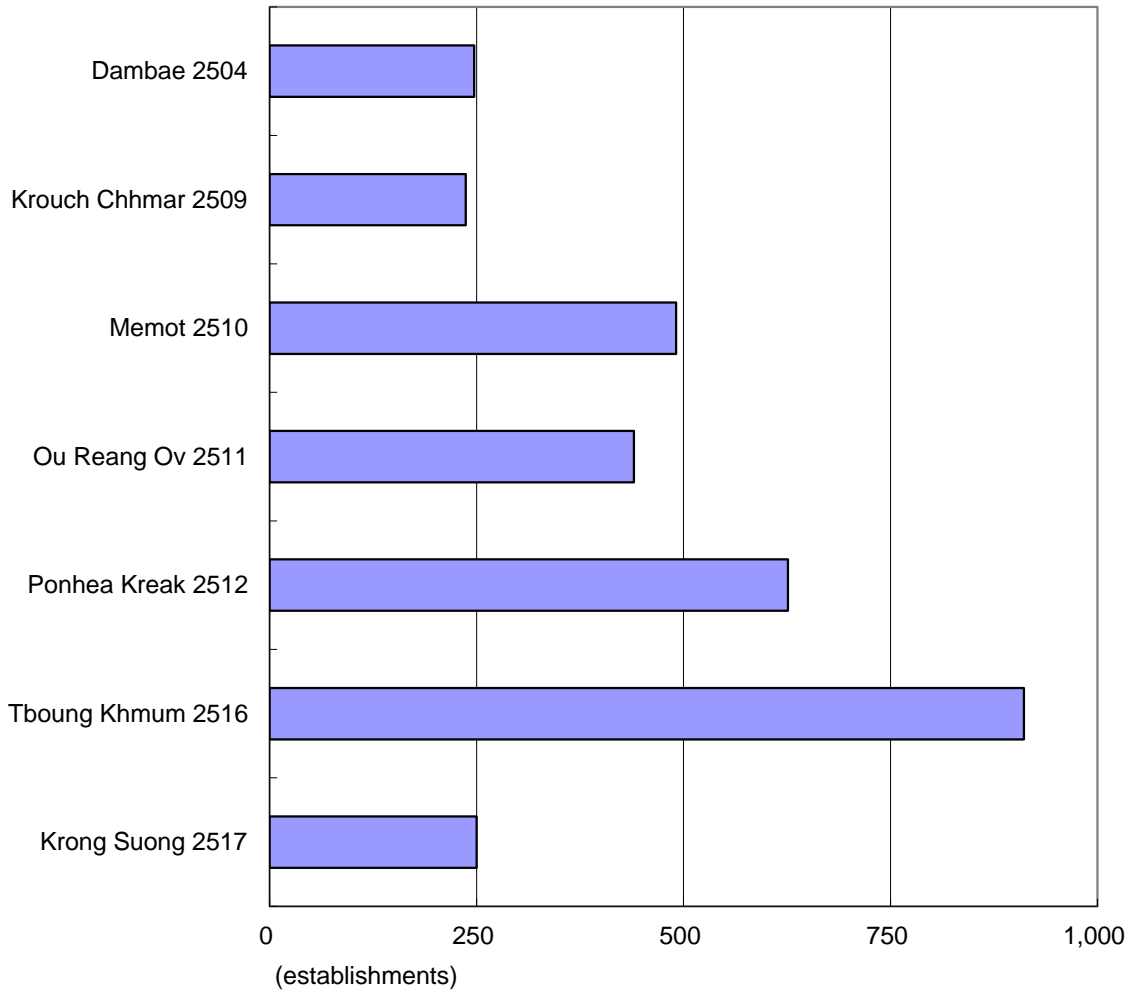


*\* New establishments mean establishments which started business between 1 January 2009 and 1 March 2011.*

**Graph 4. Number of Establishments with 10 or more Persons Engaged  
by District - Tboung Khmum (2011)**

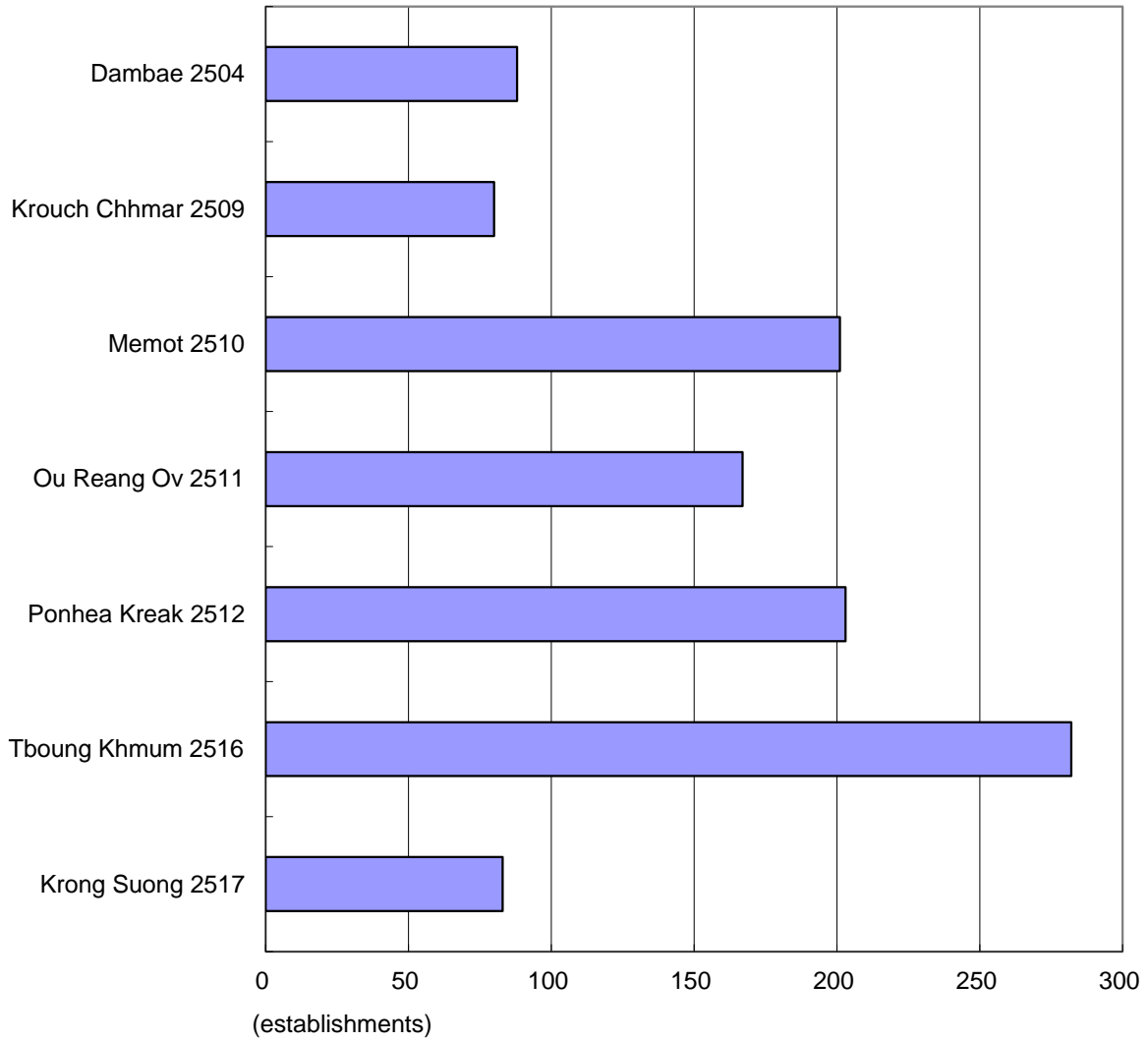


**Graph 5. Number of Establishments in Manufacturing Sector of ISIC  
by District - Tboung Khmum (2011)**



\* ISIC stands for International Standard Industrial Classification.

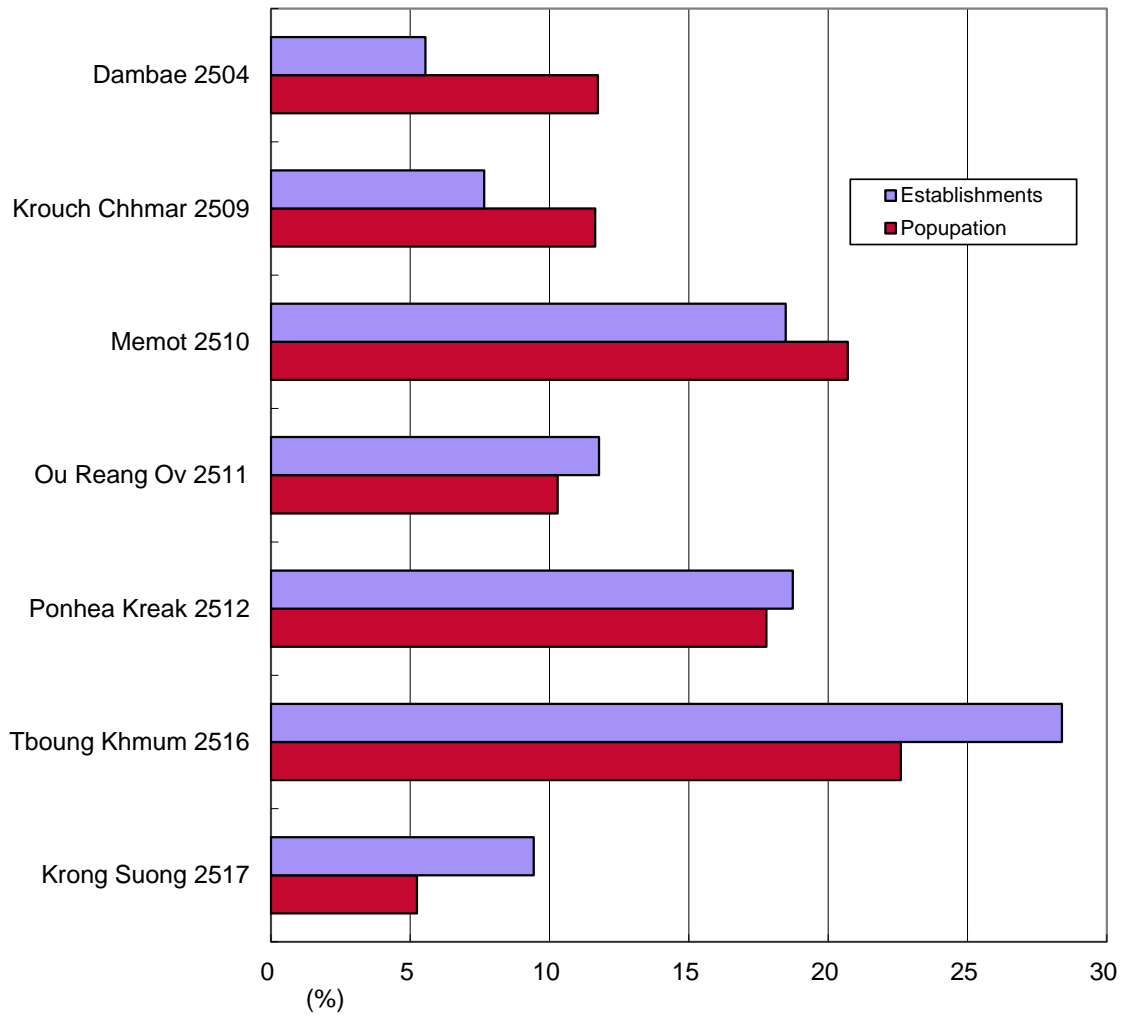
**Graph 6. Number of New Establishments in Manufacturing Sector of ISIC by District - Tboung Khmum (2011)**



\* *New establishments mean establishments which started business between 1 January 2009 and 1 March 2011.*

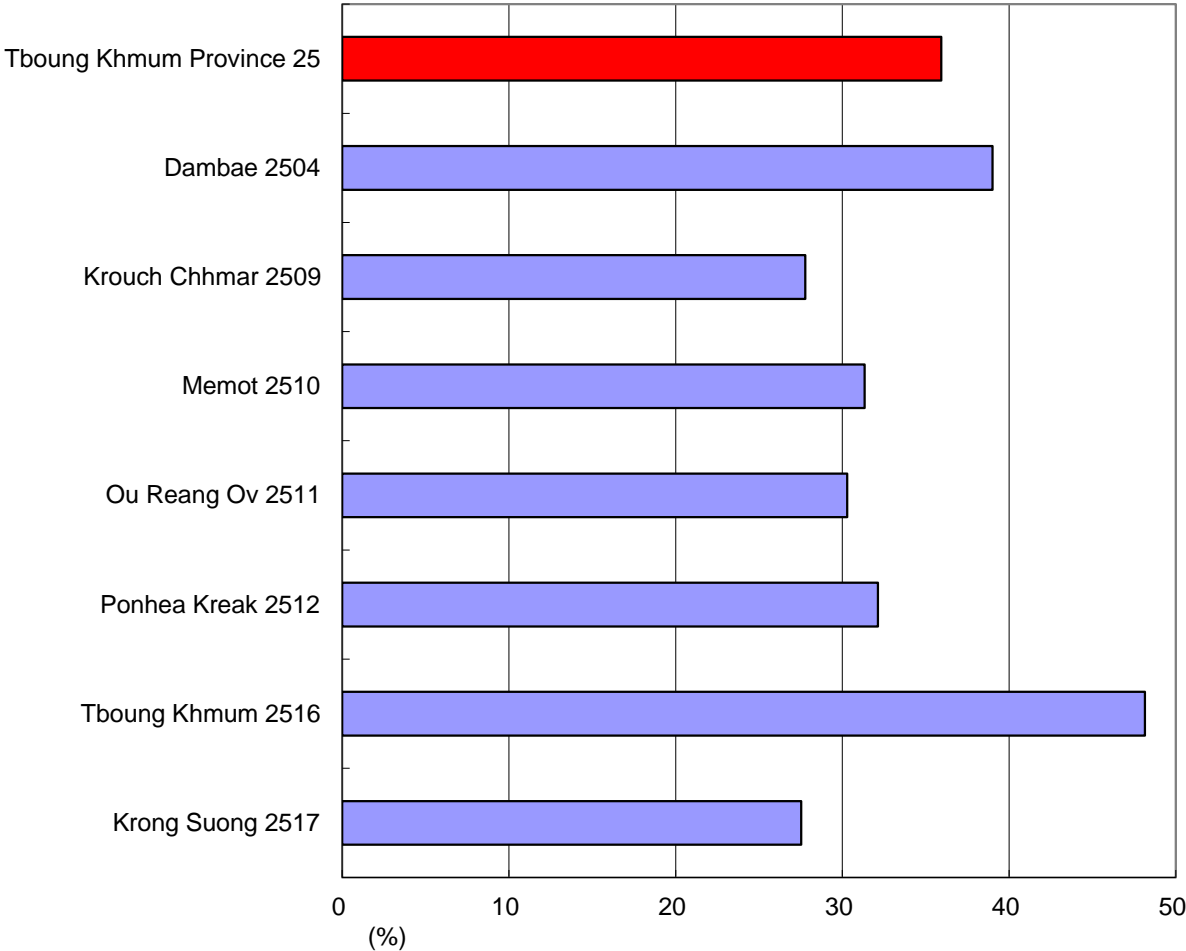
\*\* *ISIC stands for International Standard Industrial Classification.*

**Graph 7. Percent to Total Number of Persons Engaged of Tboung Khmum by District (2011)  
and Percent to Total Population of Tboung Khmum by District (2011)**



*\* The population projection for 2011 is used in this graph.*

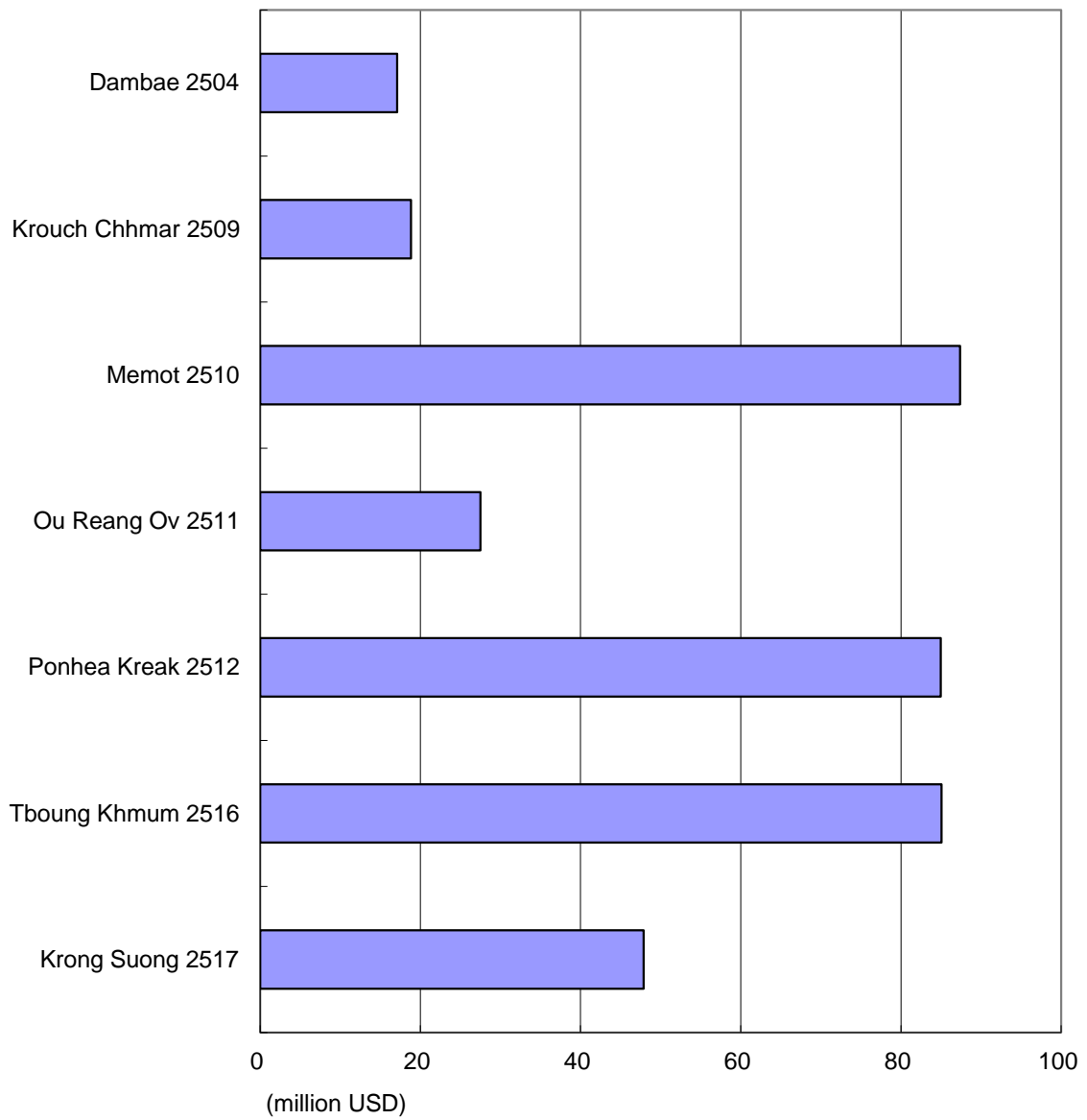
**Graph 8. Ratio of Persons Engaged in New Establishments by District - Tboung Khmum (2011)**



\* *New establishments mean establishments which started business between 1 January 2009 and 1 March 2011.*



**Graph 9. Annual Sales by District - Tboung Khmum (2011)**



**Graph 10. Annual Expenses by District - Tboung Khmum (2011)**

