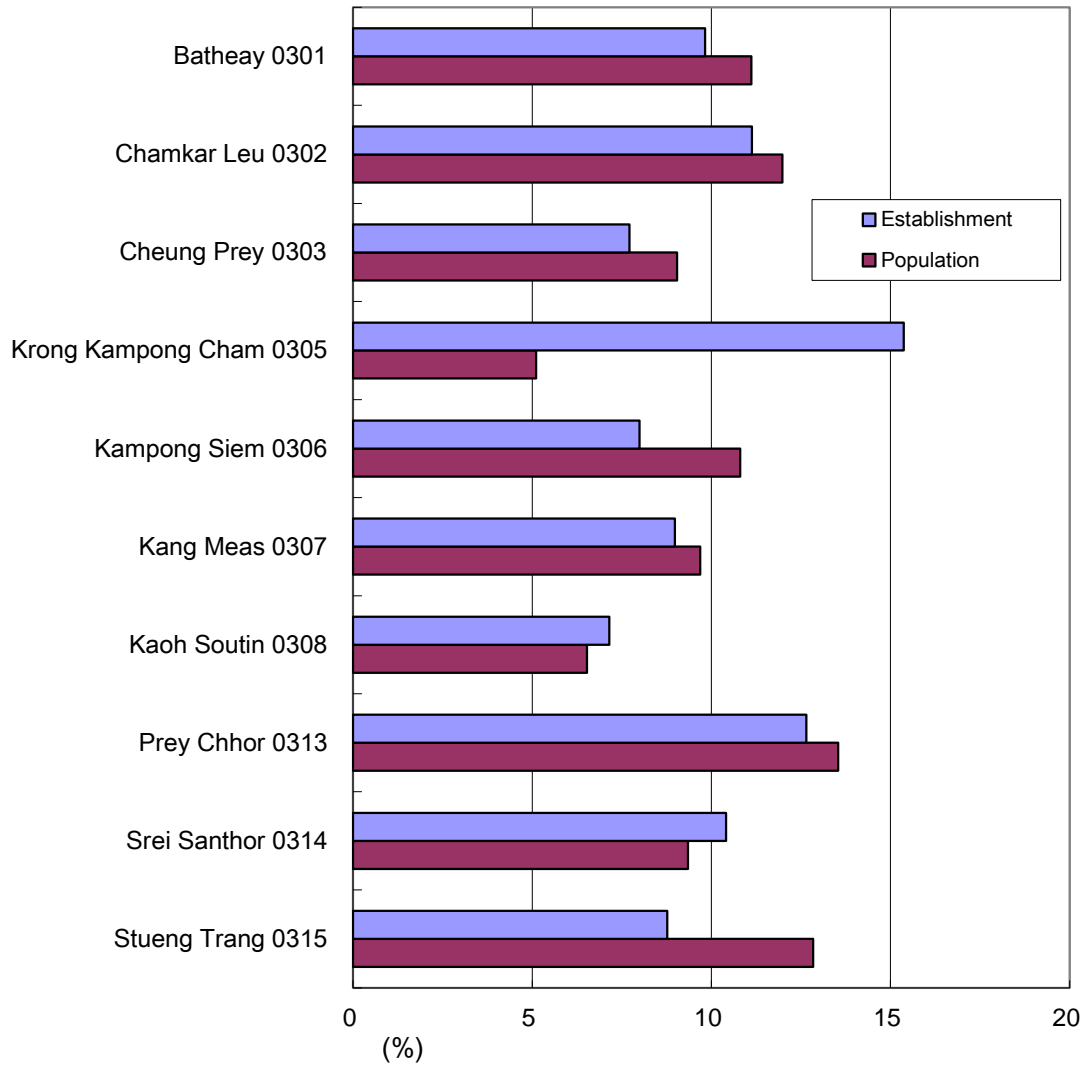
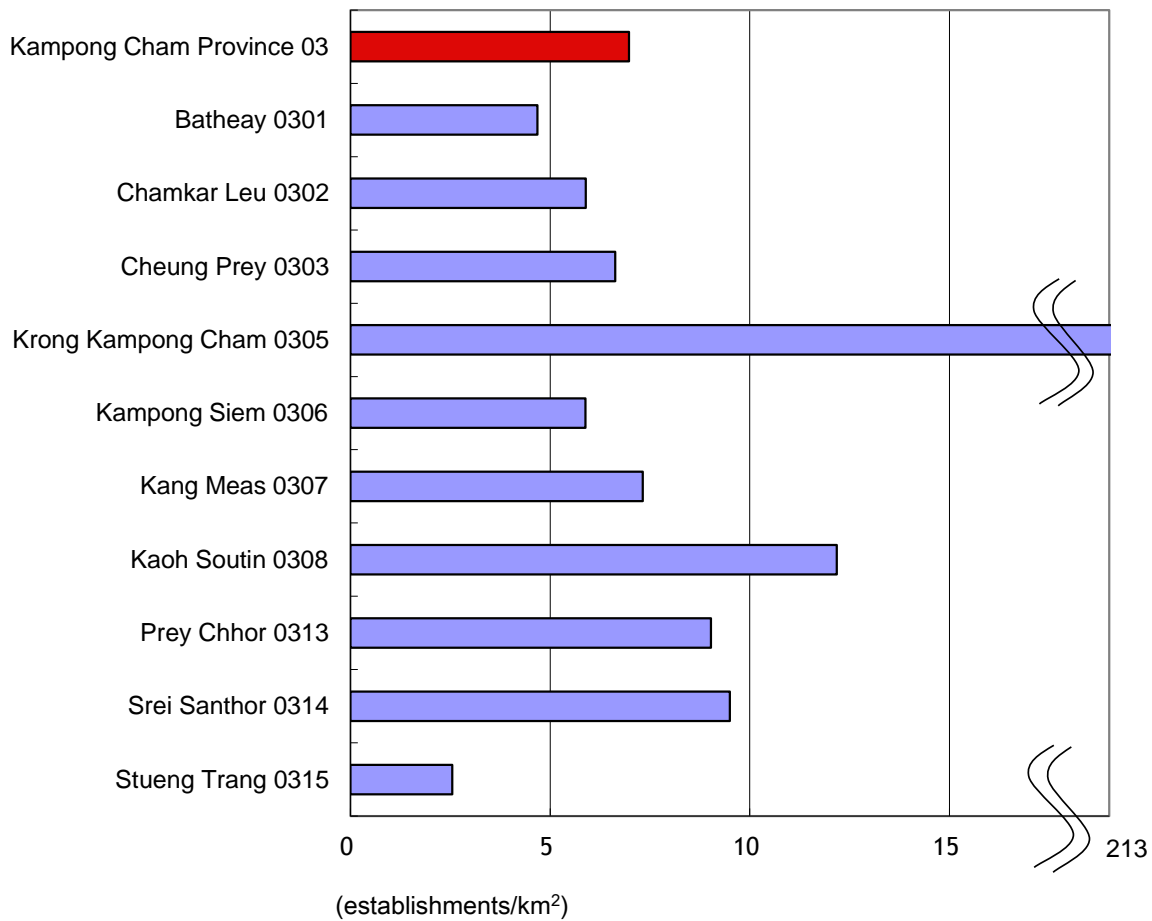


Graph 1. Percent to Total Number of Establishments of Kampong Cham by District (2011) and Percent to Total Population of Kampong Cham by District (2011)

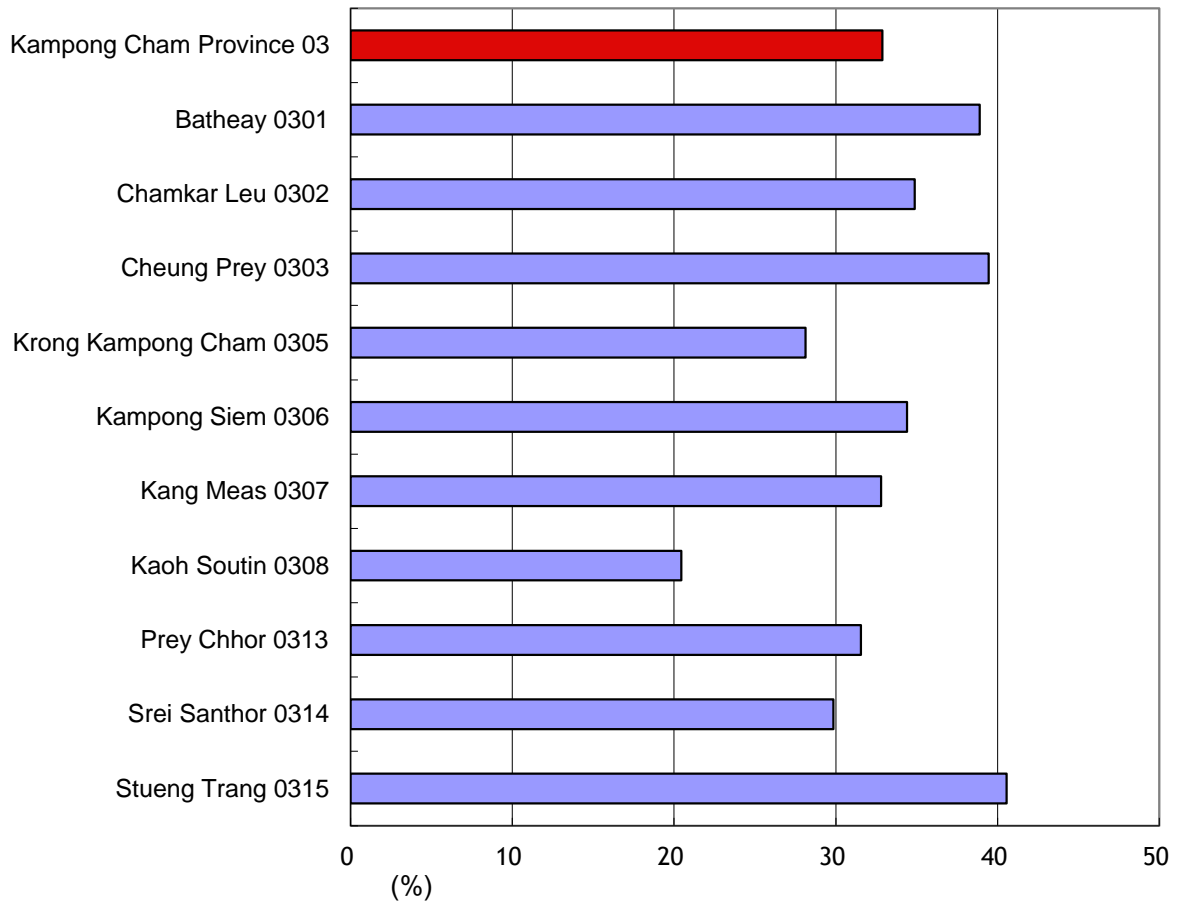


** The population projection for 2011 is used in this graph.*

Graph 2. Establishment Density by District - Kampong Cham (2011)

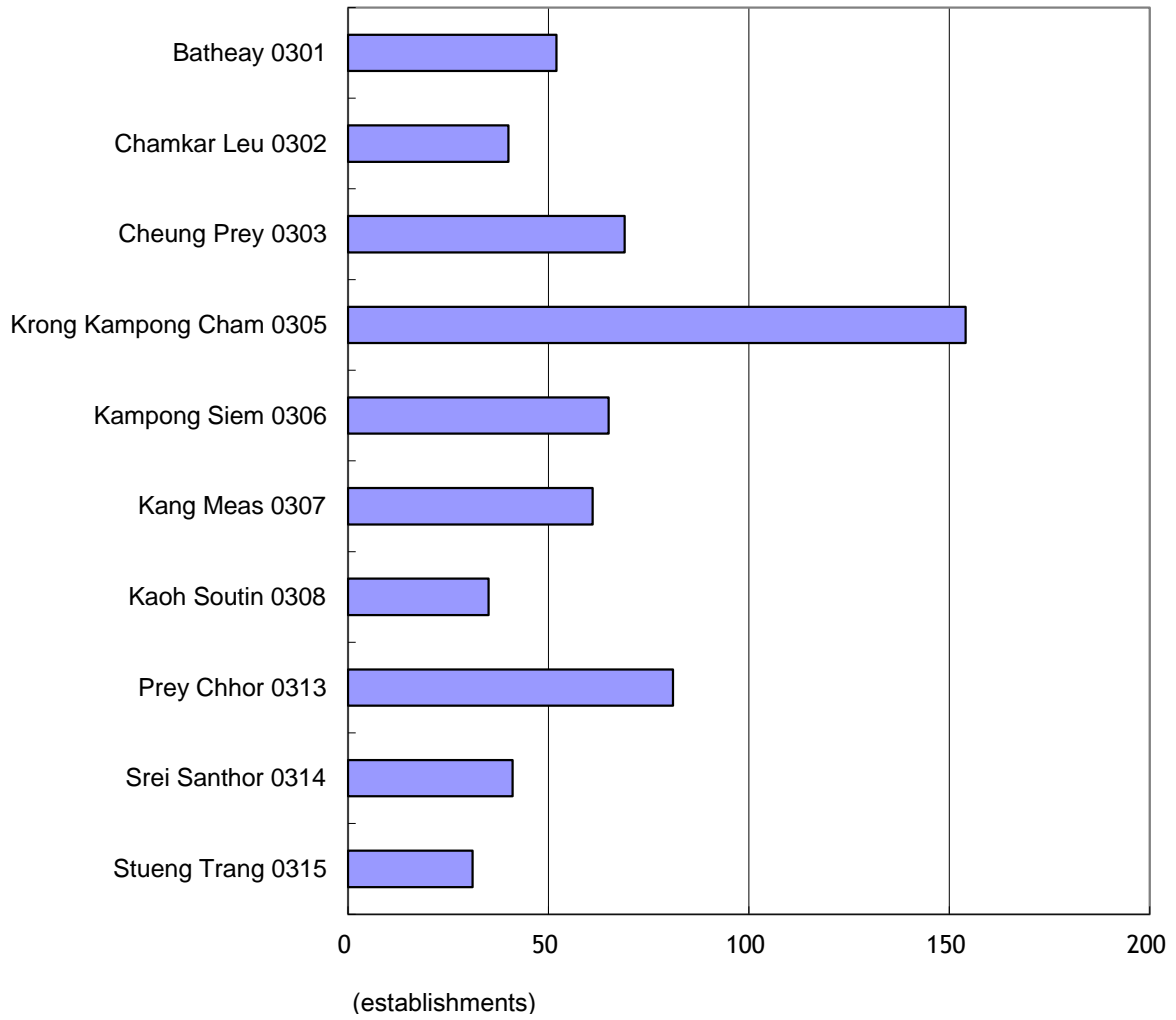


Graph 3. Ratio of New Establishments by District - Kampong Cham (2011)

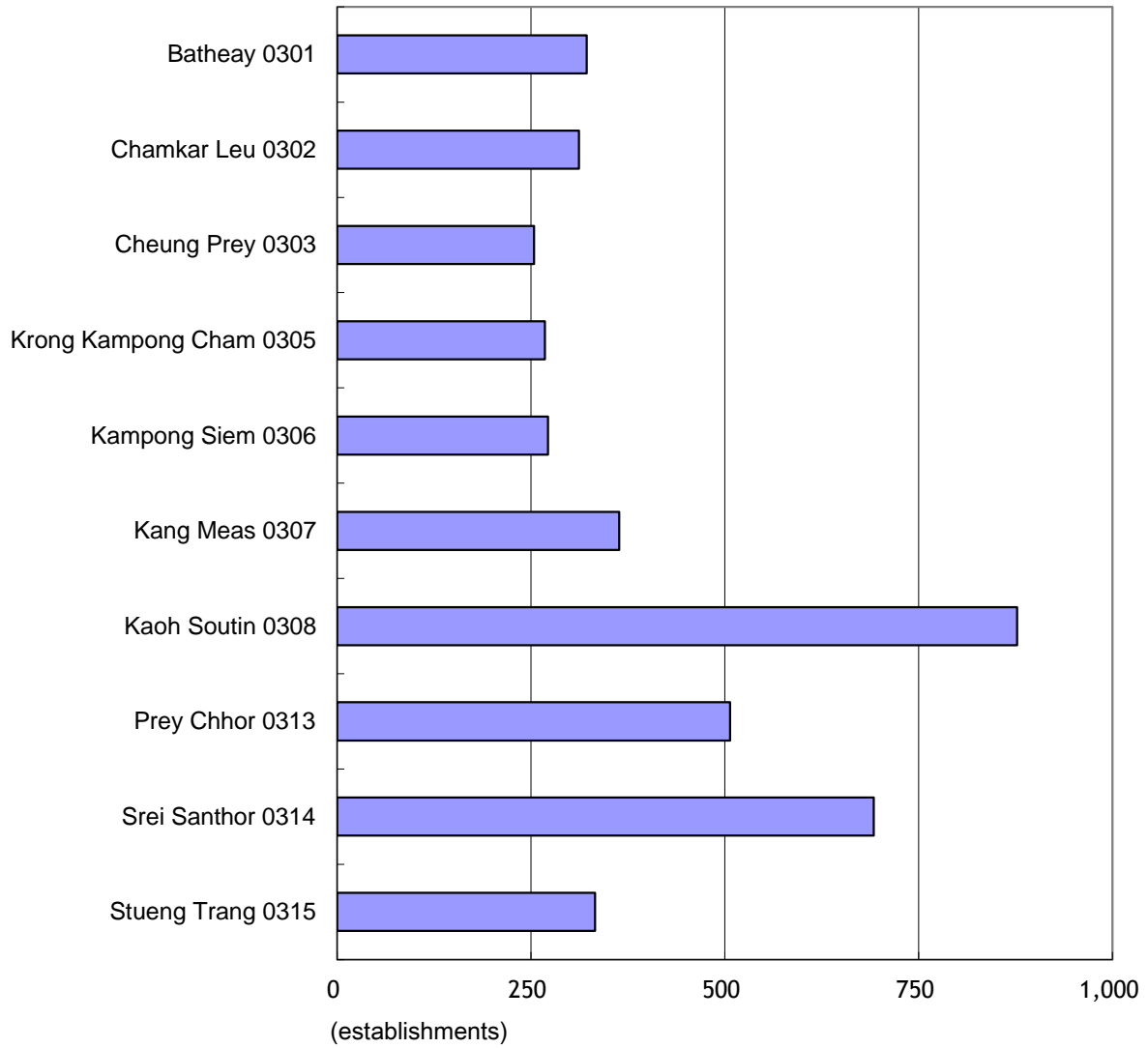


** New establishments mean establishments which started business between 1 January 2009 and 1 March 2011.*

**Graph 4. Number of Establishments with 10 or more Persons Engaged
by District - Kampong Cham (2011)**

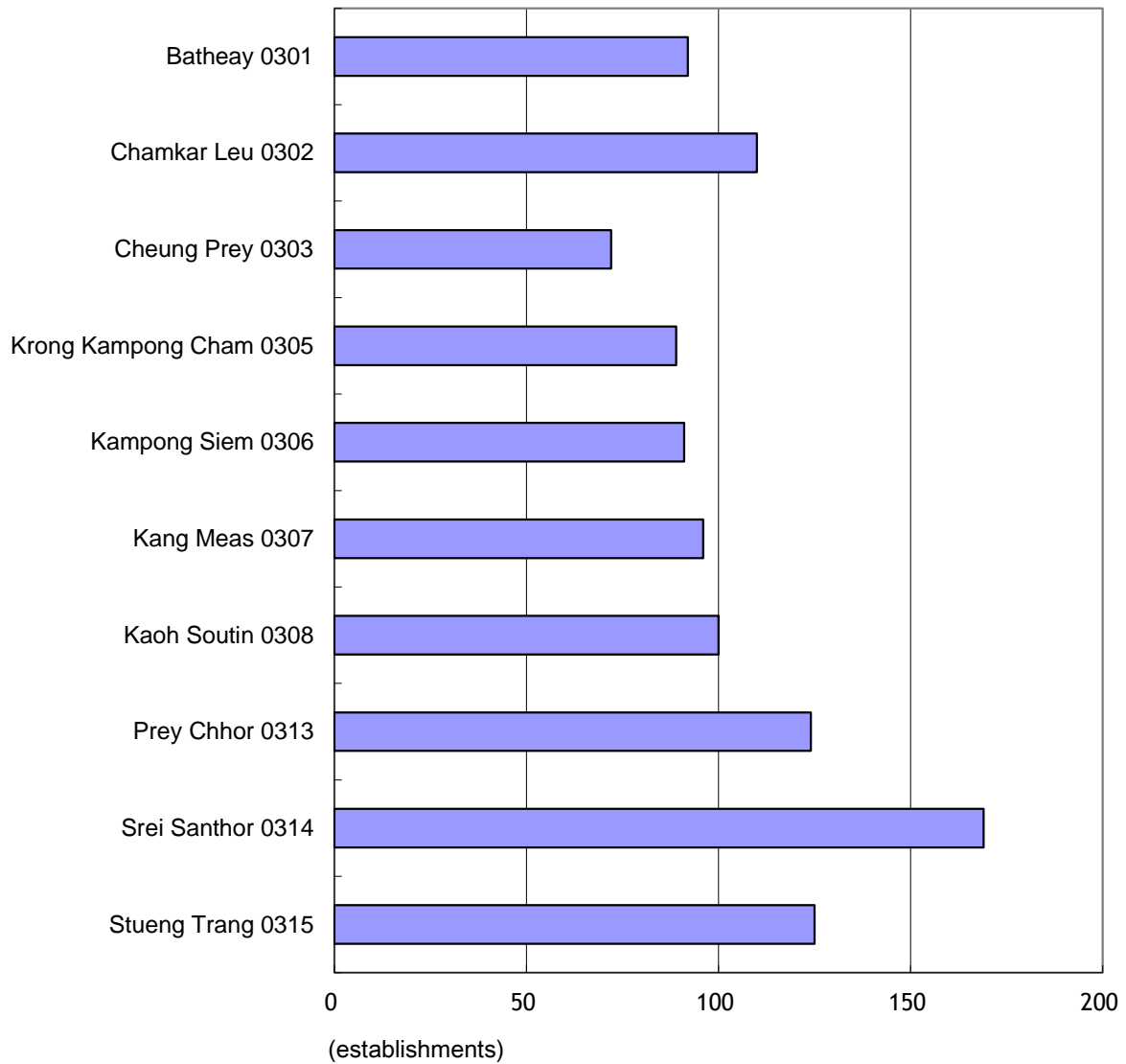


**Graph 5. Number of Establishments in Manufacturing Sector of ISIC
by District - Kampong Cham (2011)**



* ISIC stands for International Standard Industrial Classification.

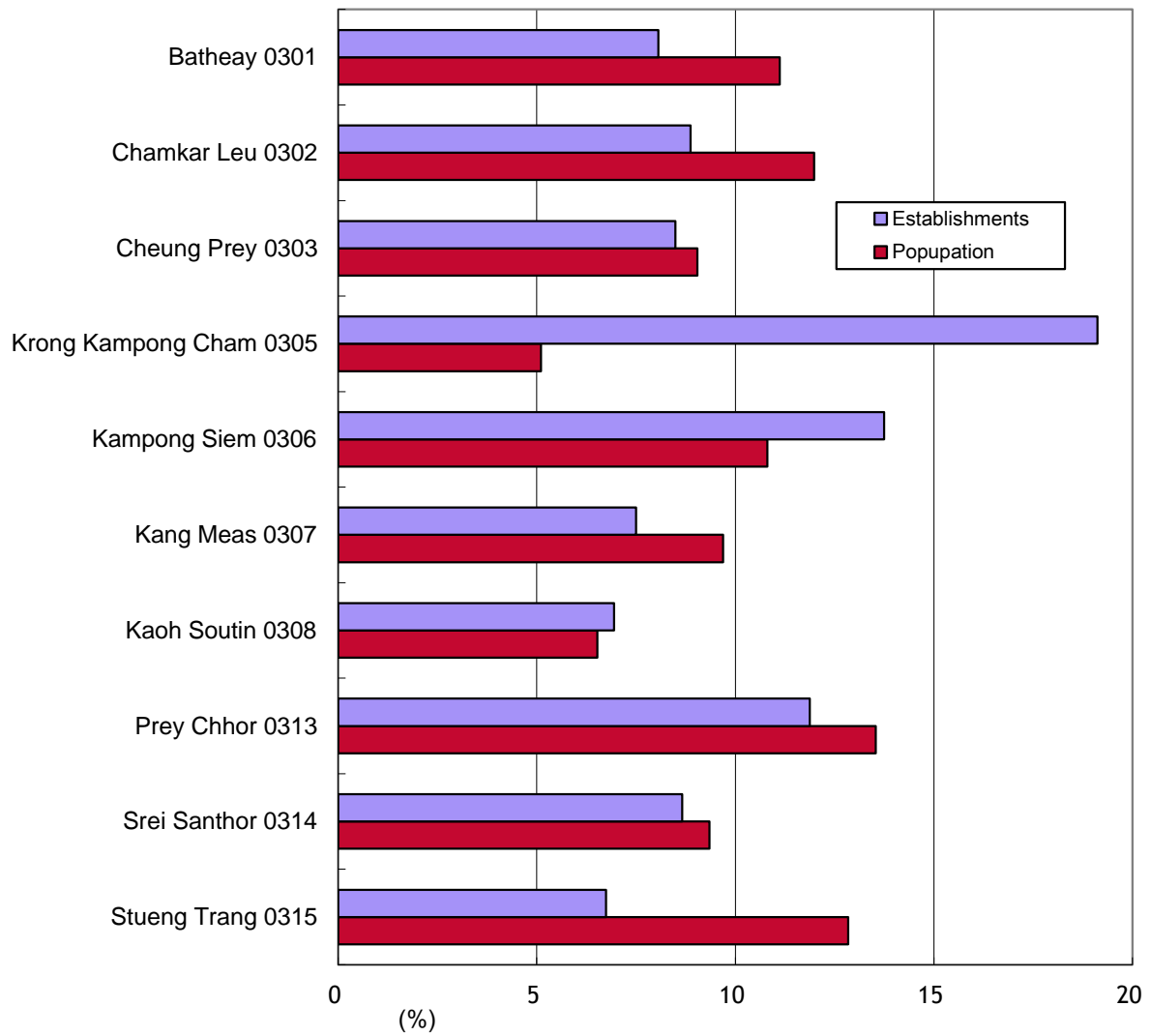
**Graph 6. Number of New Establishments in Manufacturing Sector of ISIC
by District - Kampong Cham (2011)**



* *New establishments mean establishments which started business between 1 January 2009 and 1 March 2011.*

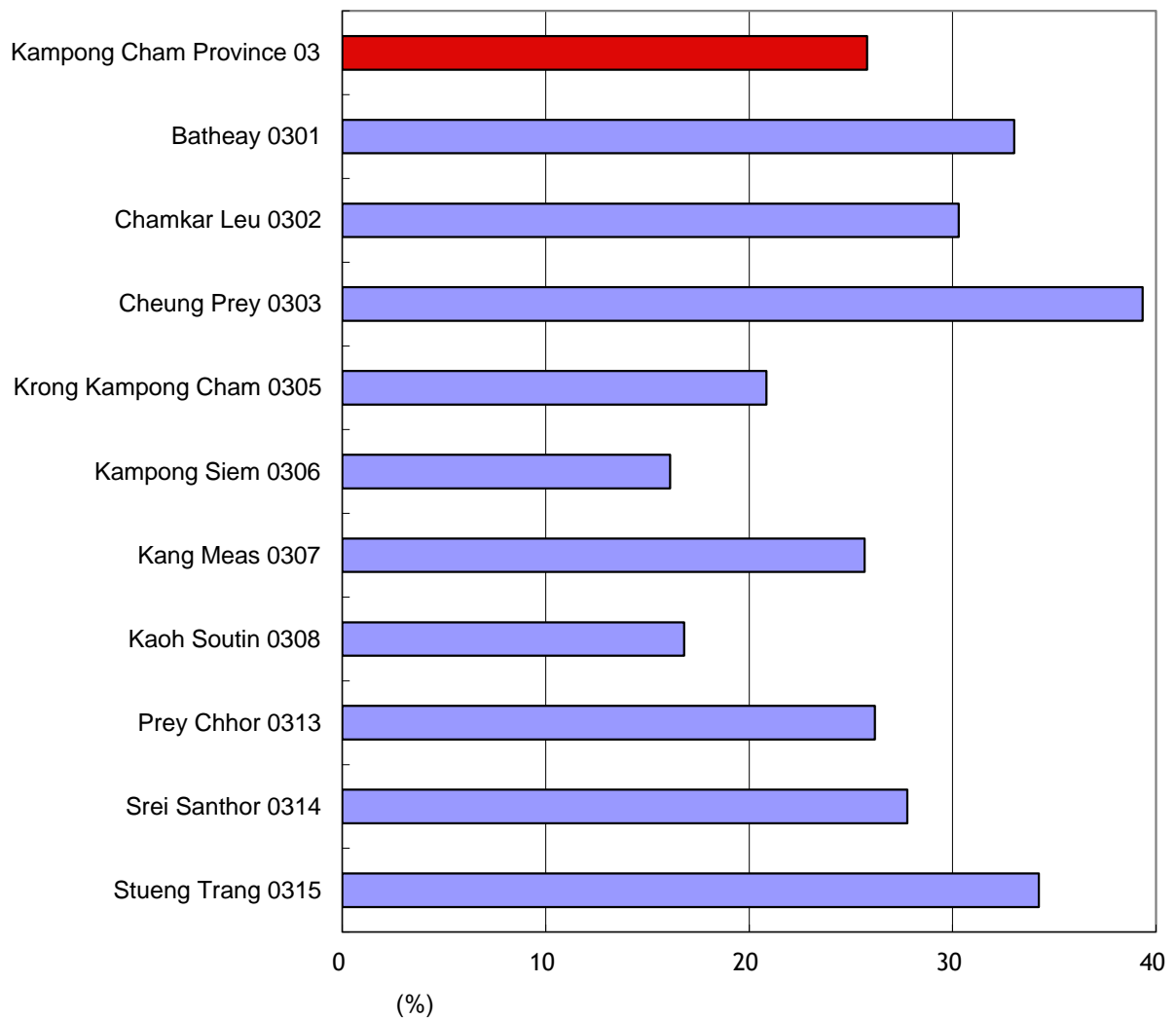
** *ISIC stands for International Standard Industrial Classification.*

**Graph 7. Percent to Total Number of Persons Engaged of Kampong Cham by District (2011)
and Percent to Total Population of Kampong Cham by District (2011)**



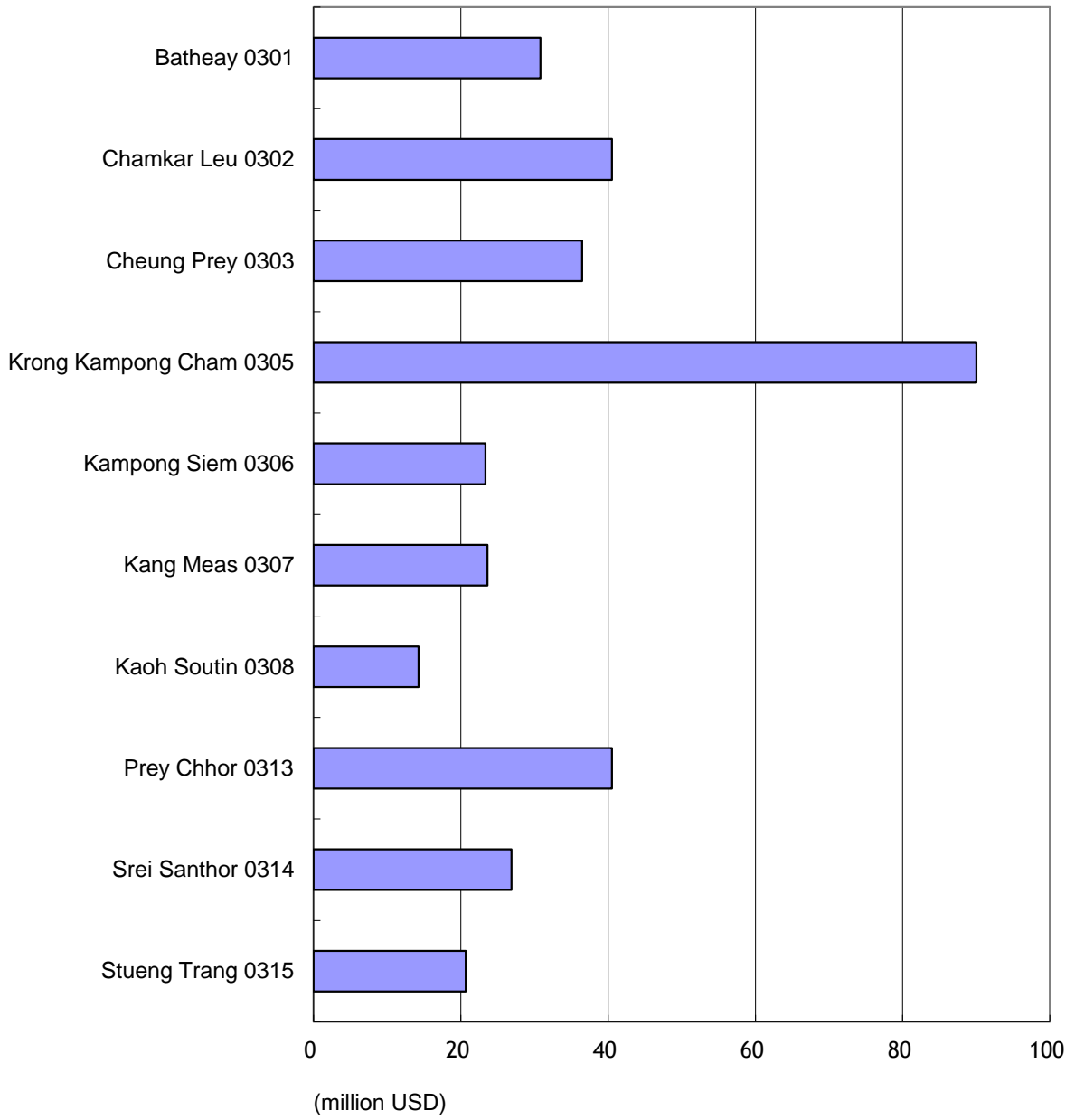
** The population projection for 2011 is used in this graph.*

**Graph 8. Ratio of Persons Engaged in New Establishments
by District - Kampong Cham (2011)**



** New establishments mean establishments which started business between 1 January 2009 and 1 March 2011.*

Graph 9. Annual Sales by District - Kampong Cham (2011)



Graph 10. Annual Expenses by District - Kampong Cham (2011)

