

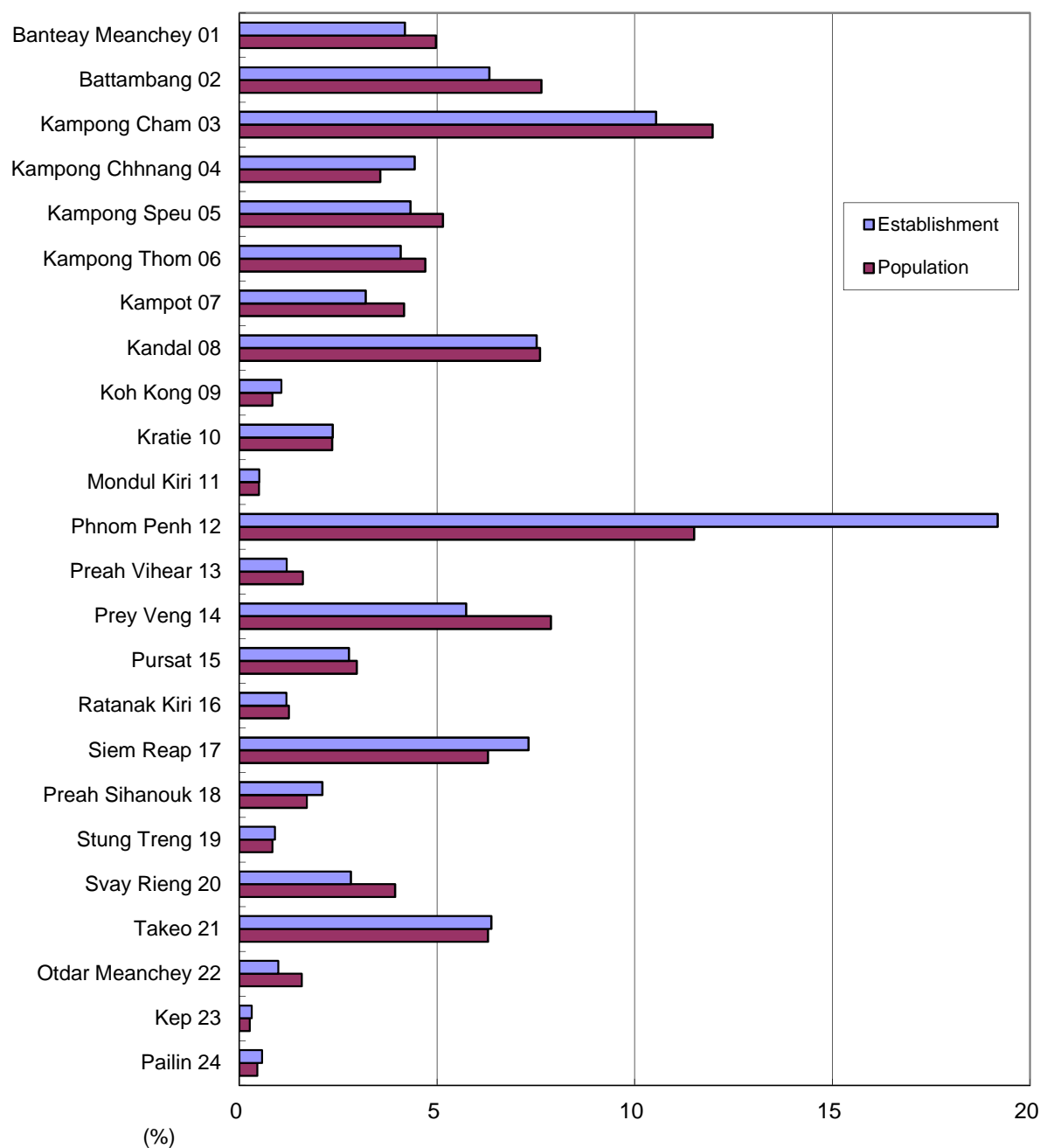
SECTION II:

Graphs and Maps

* The preliminary results are based on the new administrative areas promulgated on 5 November 2010.

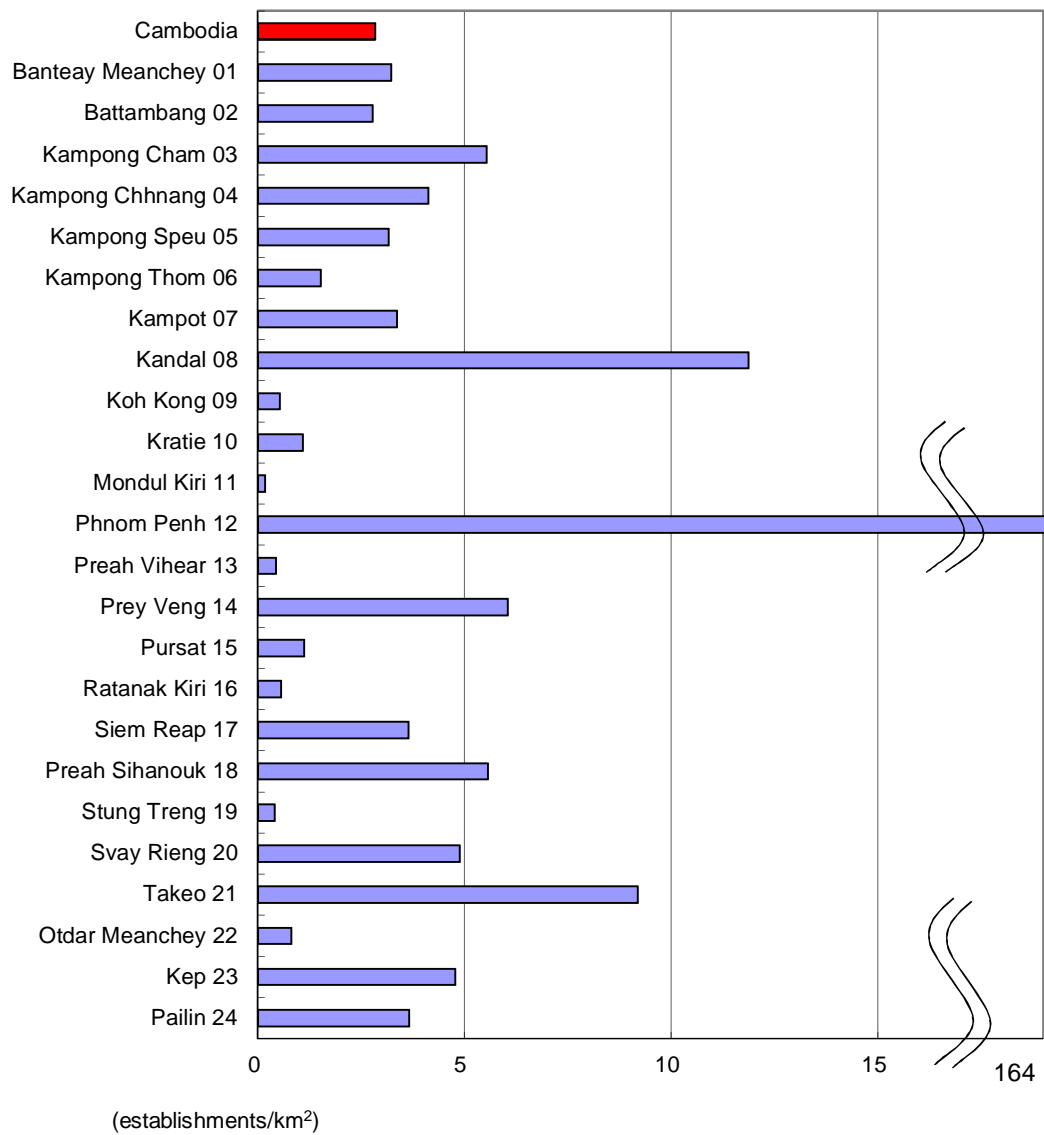
** The preliminary results is for the purpose of early release of the number of establishments, and might be slightly different from the final results which are to be released in February 2015.

Graph 1. Percent to Provisional Total Number of Establishments of Cambodia by Province in 2014 and Percent to Total Population of Cambodia by Province

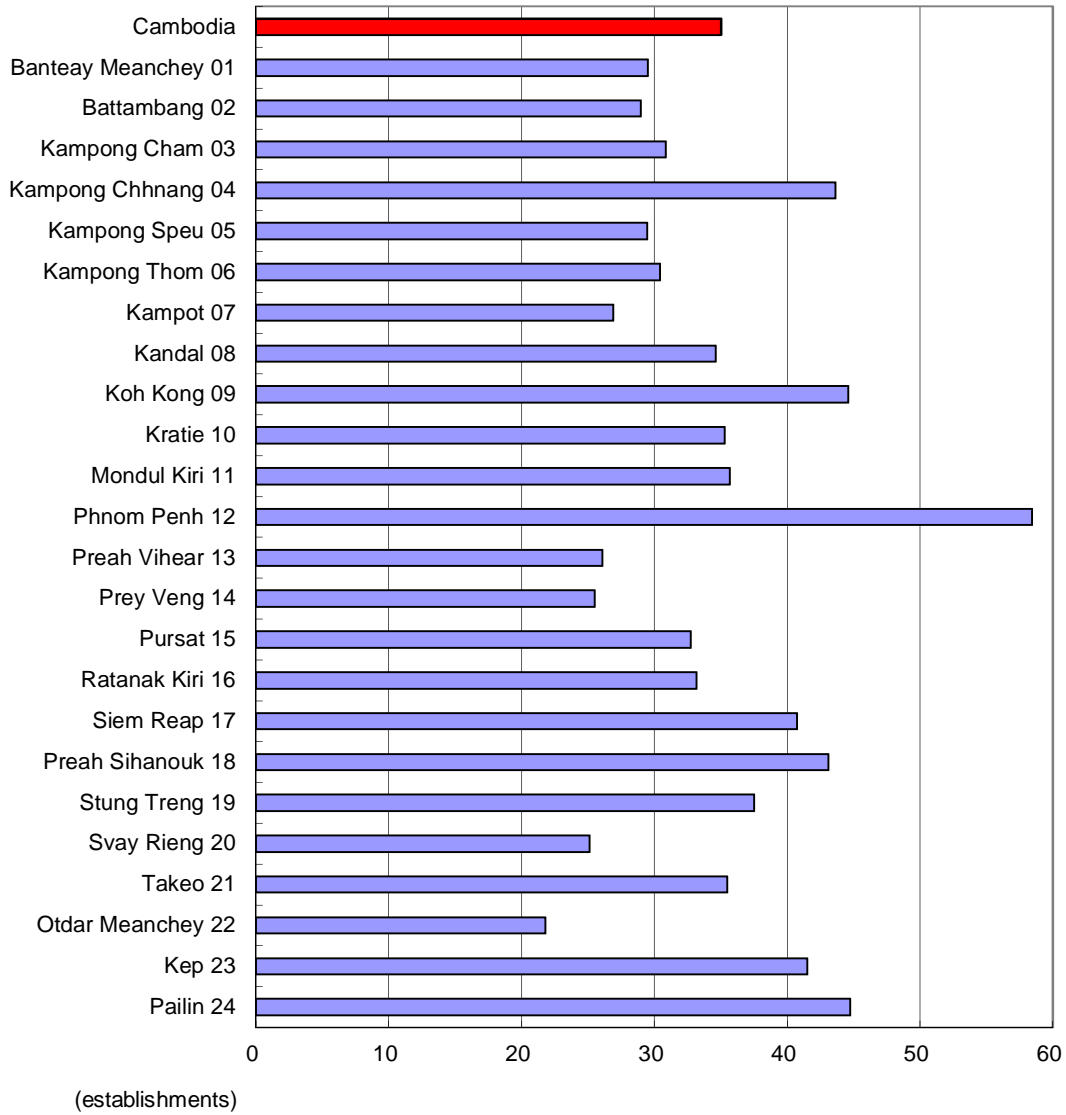


Note: The final results of the 2013 Cambodia Inter-censal Population Survey are used as base data on population in the above graph.

Graph 2. Provisional Establishment Density by Province in 2014

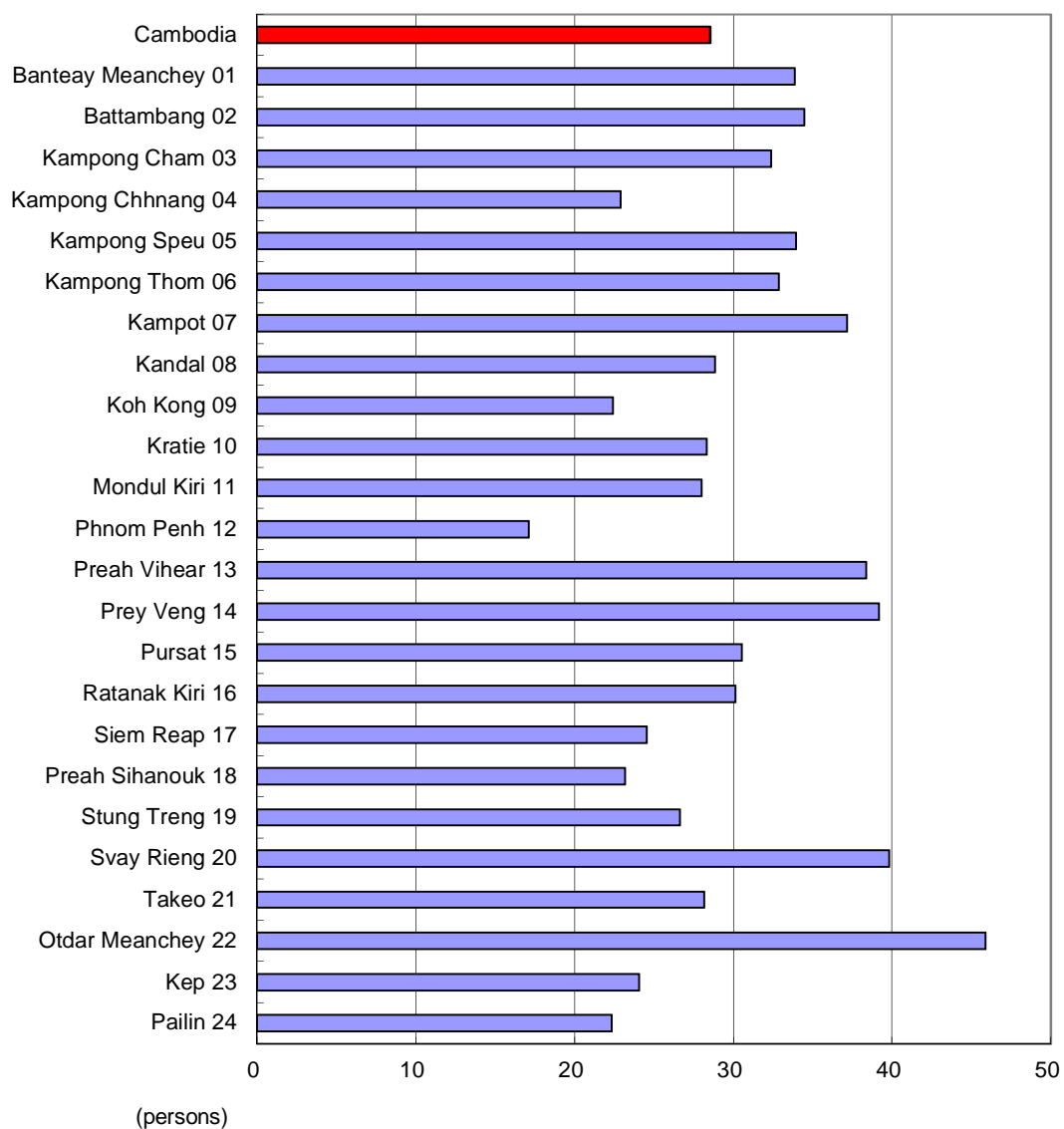


Graph 3-1. Provisional Number of Establishments per 1,000 Persons by Province in 2014



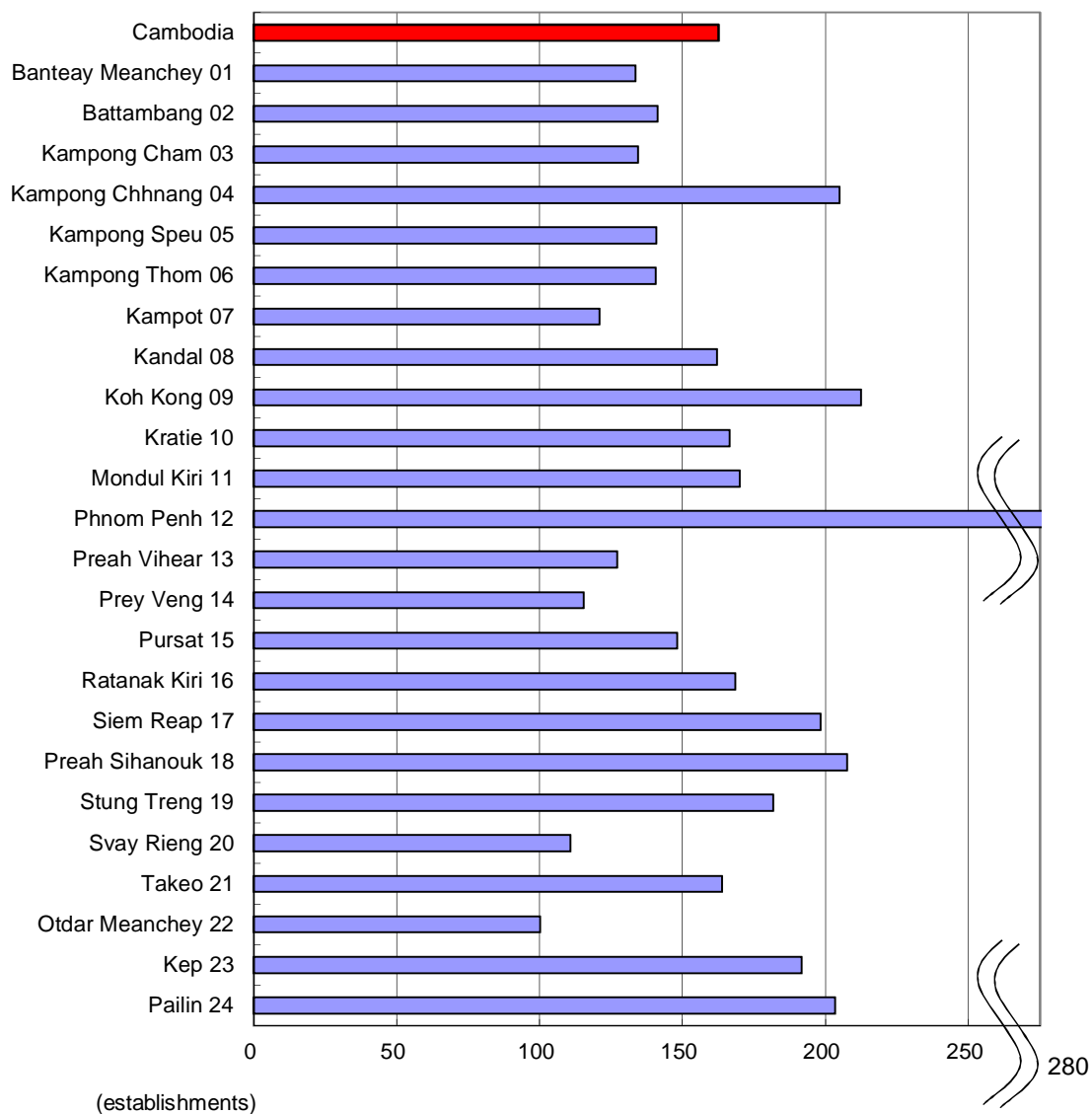
Note: The final results of the 2013 Cambodia Inter-censal Population Survey are used as base data on population in the above graph.

Graph 3-2. Provisional Population per Establishment by Province in 2014



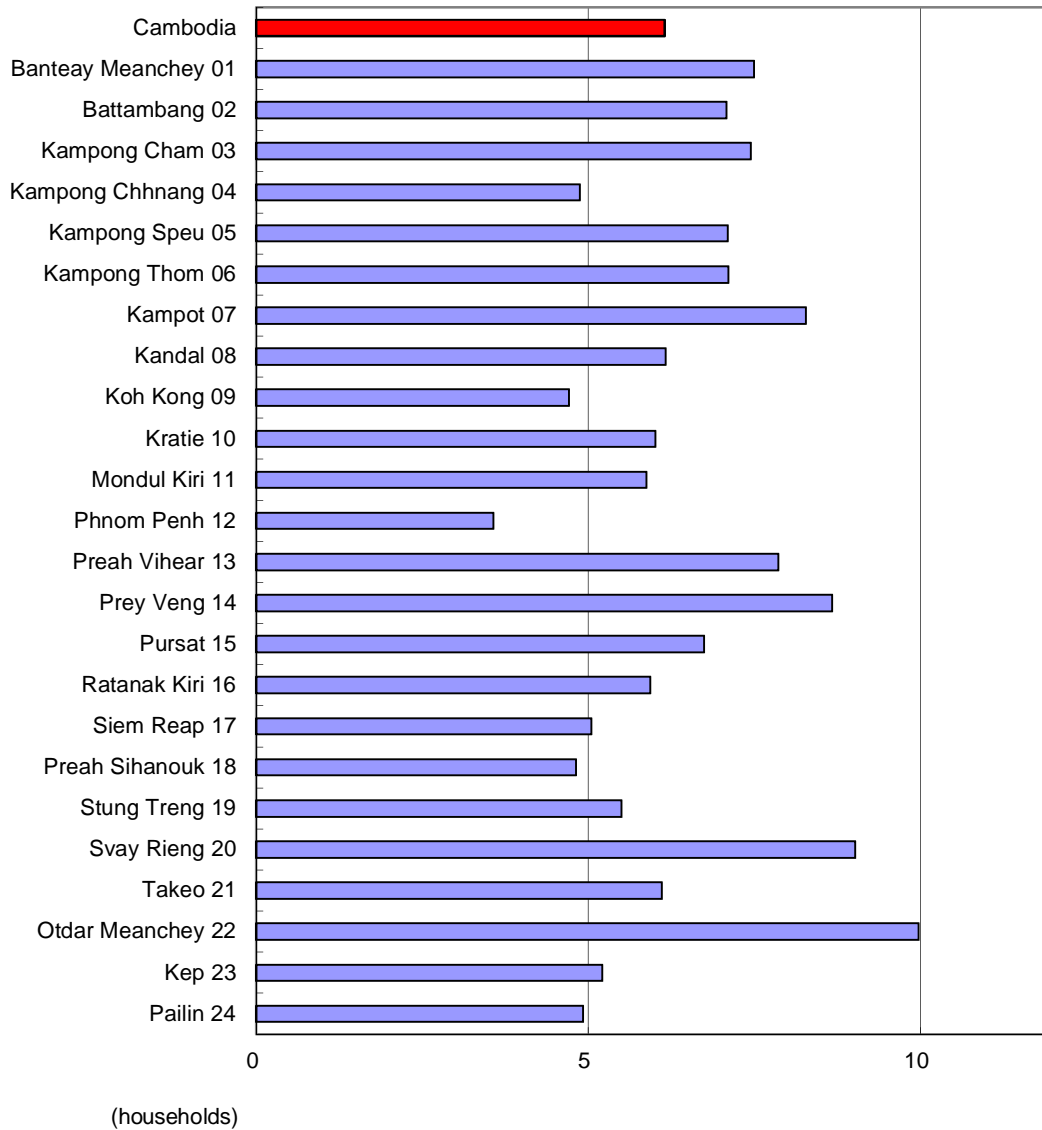
Note: The final results of the 2013 Cambodia Inter-censal Population Survey are used as base data on population in the above graph.

Graph 4-1. Provisional Number of Establishments per 1,000 Normal Households



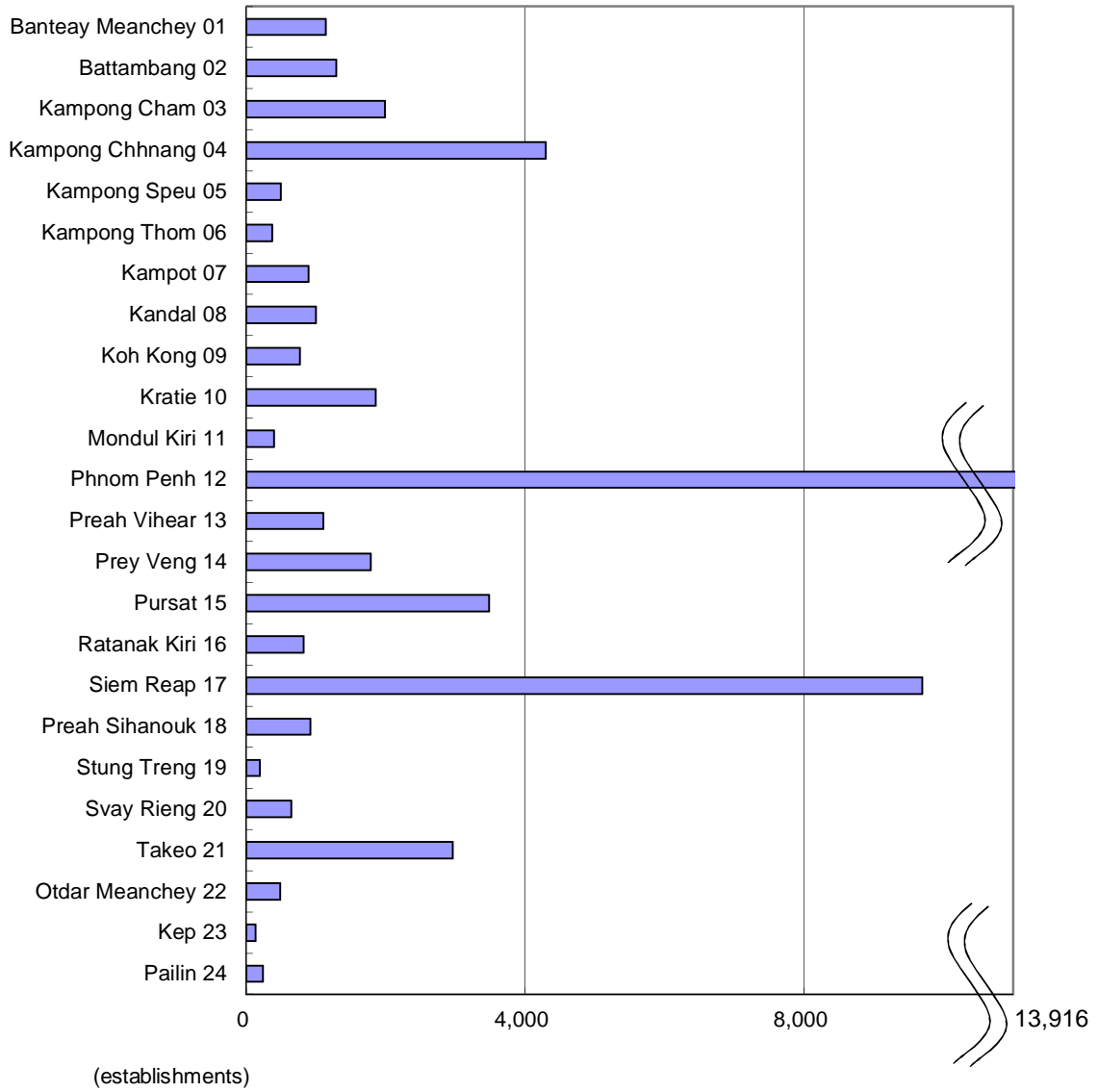
Note: The final results of the 2013 Cambodia Inter-censal Population Survey are used as base data on normal households in the above graph.

Graph 4-2. Provisional Number of Normal Households per Establishment by Province in 2014



Note: The final results of the 2013 Cambodia Inter-censal Population Survey are used as base data on normal households in the above graph.

Graph 5-1. Provisional Increase of Establishments by Province during 2011 - 2014



Graph 5-2. Provisional Rate of Increase of Establishments by Province during 2011 - 2014

