

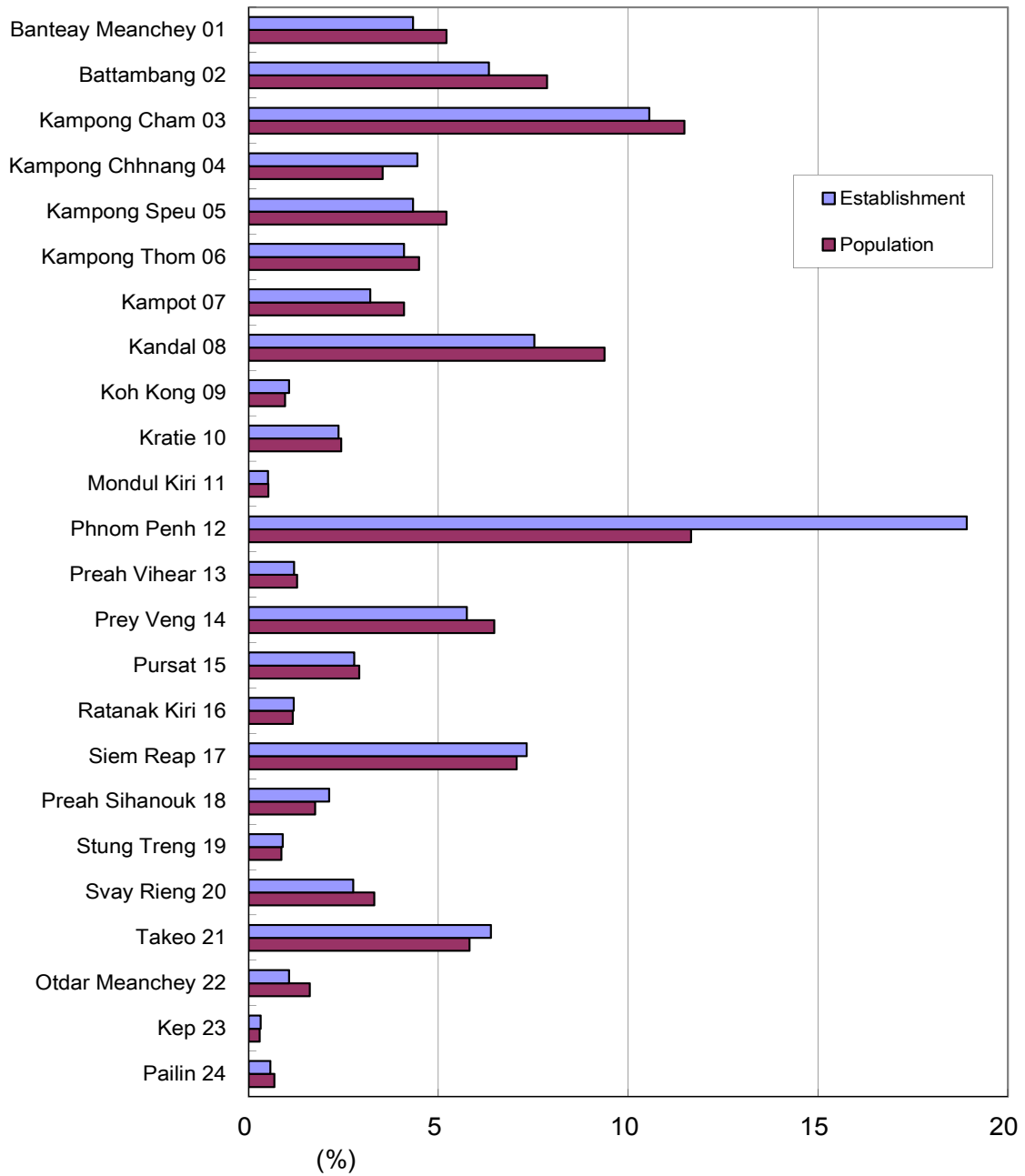
## **SECTION II:**

# **Graphs and Maps**

\* The final results are based on the administrative areas promulgated on 18 May 2011.

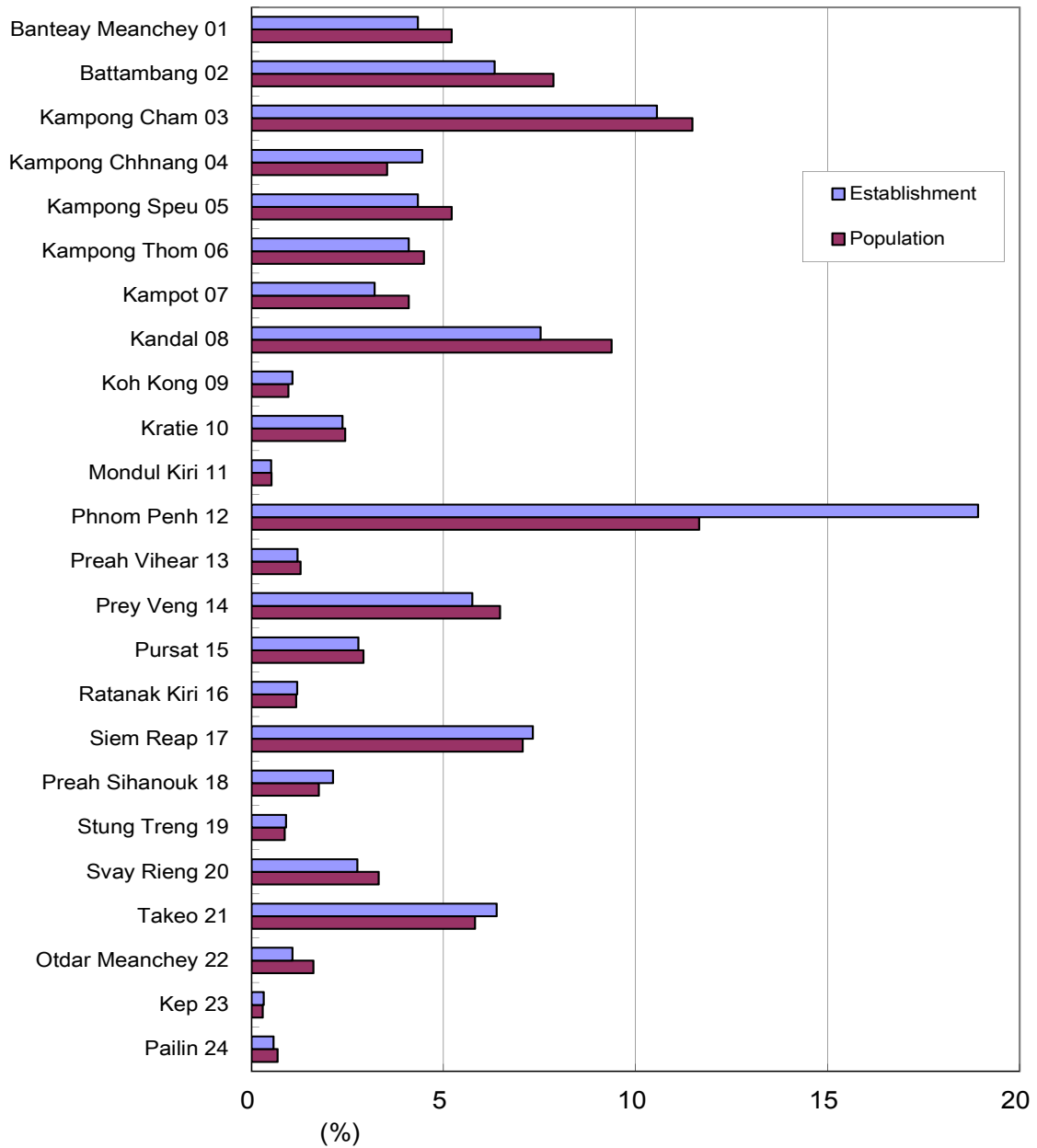


**Graph 1. Percent to Total Number of Establishments except Street Businesses of Cambodia by Province (2014) and Percent to Total Population of Cambodia by Province (2014)**



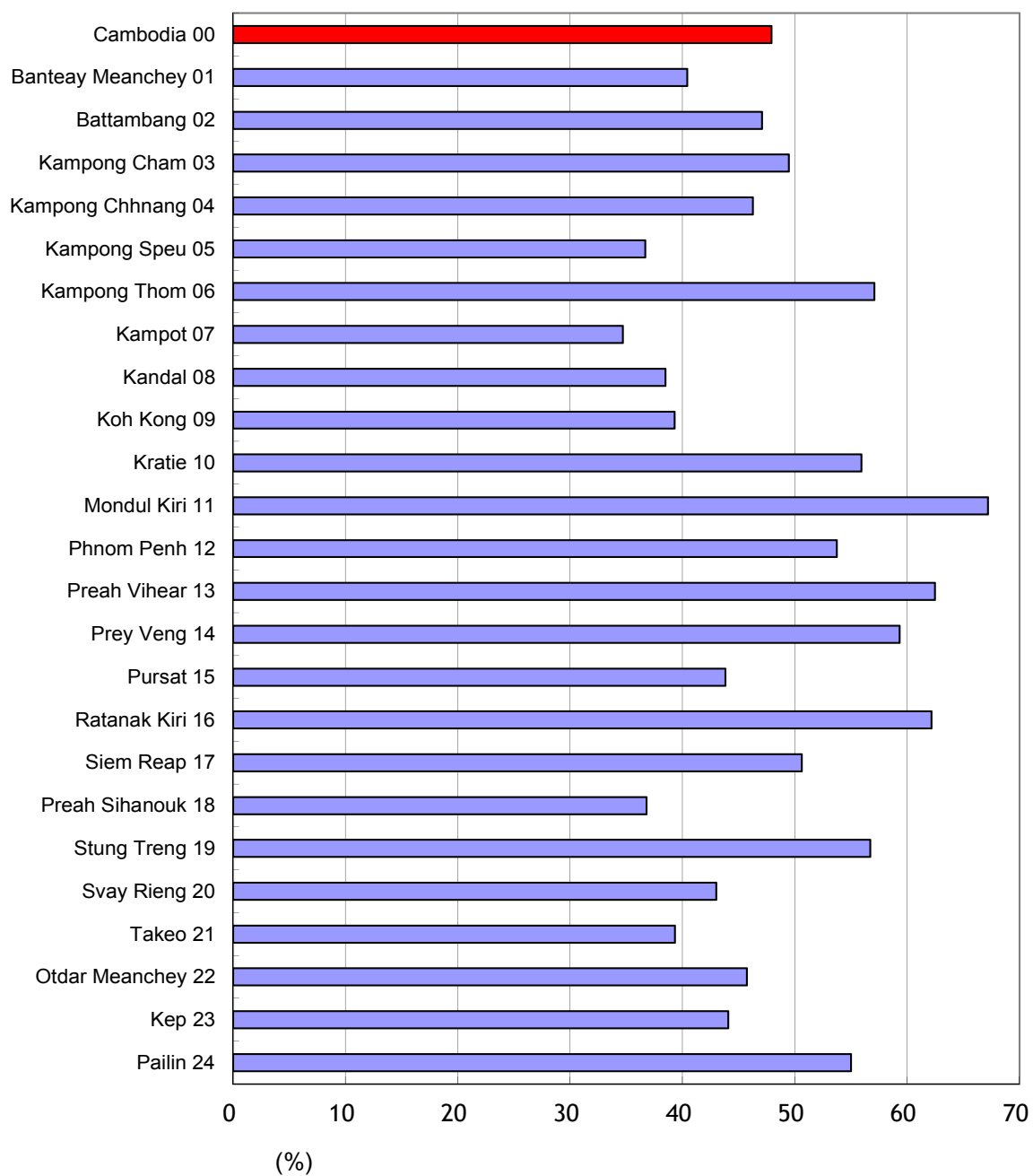
\* The Population projection in 2014 is used as base population data in the above graph.

**Graph 1. Percent to Total Number of Establishments except Street Businesses of Cambodia by Province (2014) and Percent to Total Population of Cambodia by Province (2014)**



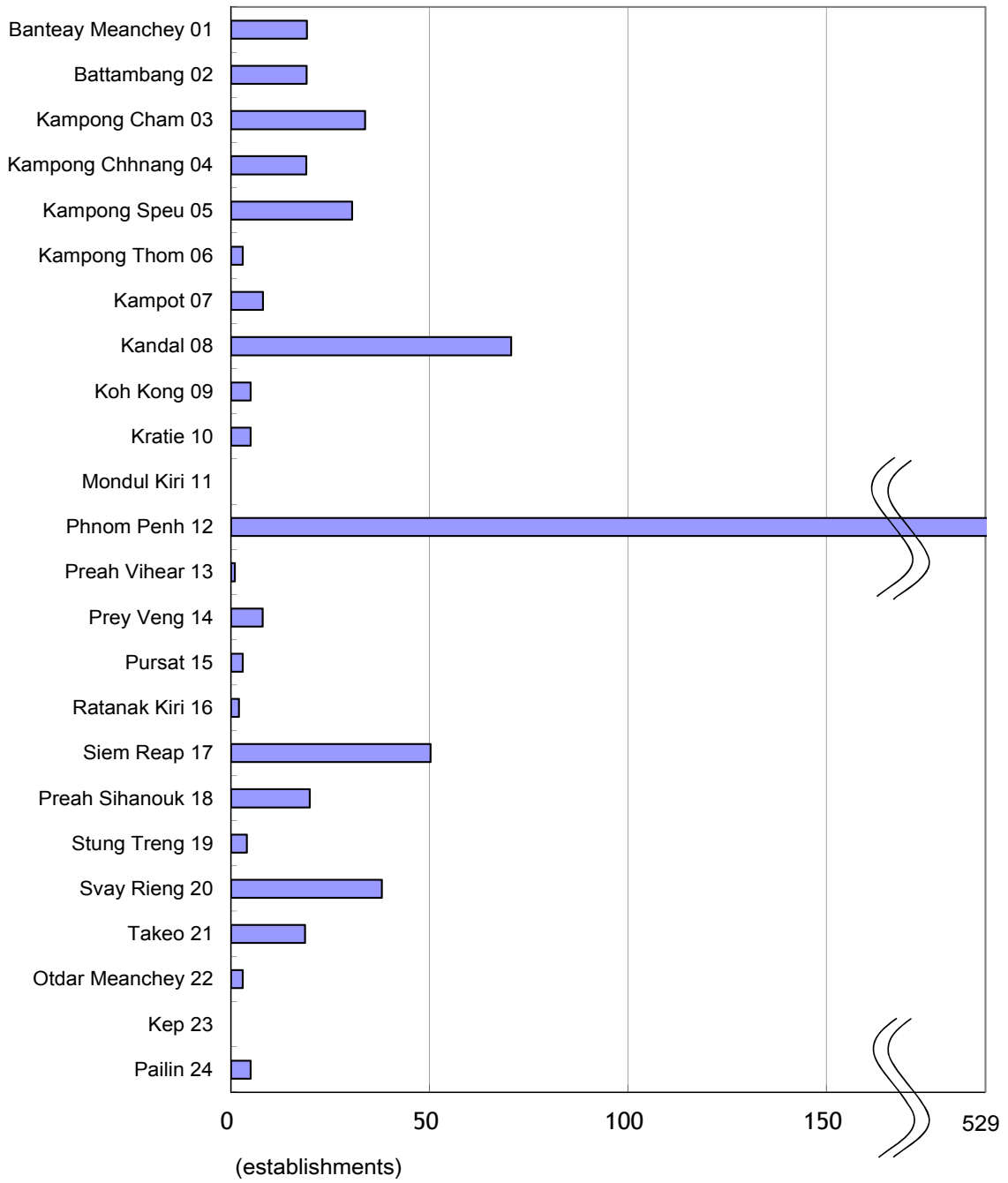
\* The population projection estimates for 2014 are used in this graph.

**Graph 3. Ratio of New Establishments except Street Businesses by Province (2014)**

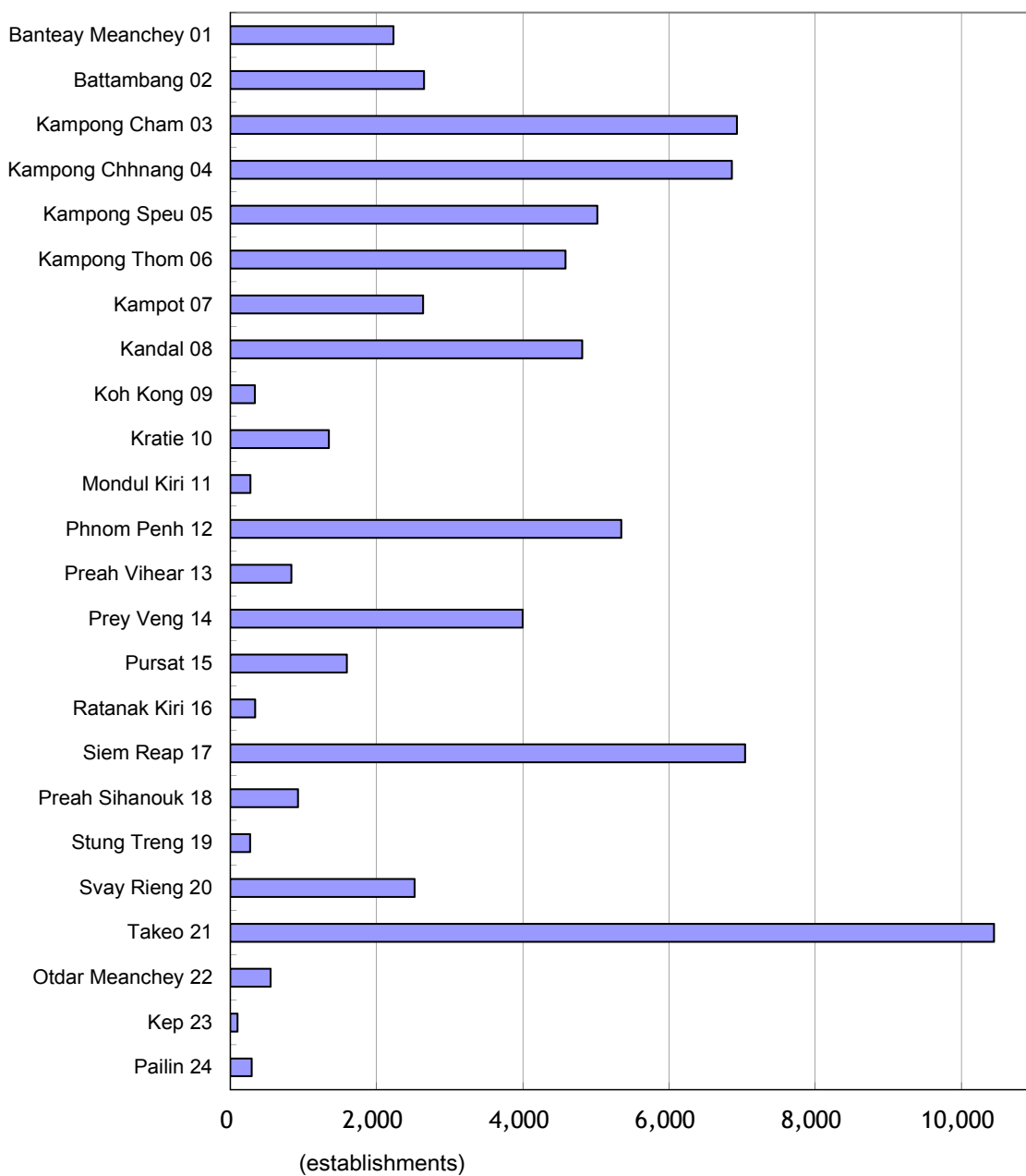


*\* New establishments mean establishments which started business between 1 January 2011 and 1 March 2014.*

**Graph 4. Number of Large Establishments with 100 or more Persons Engaged by Province (2014)**

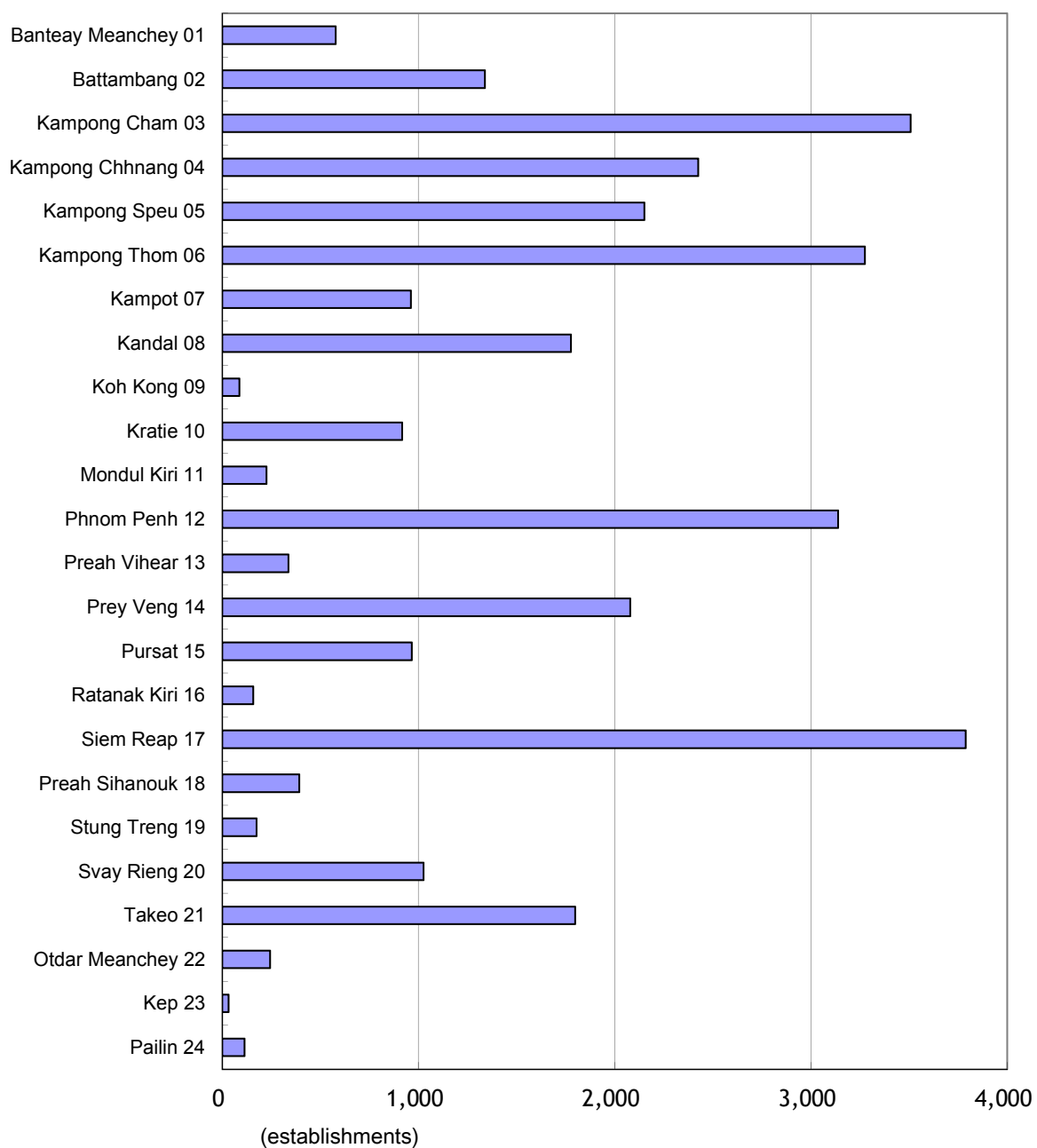


**Graph 5. Number of Establishments except Street Businesses in Manufacturing Sector of ISIC by Province (2014)**



\* ISIC stands for International Standard Industrial Classification.

**Graph 6. Number of New Establishments except Street Businesses in Manufacturing Sector of ISIC by Province (2014)**

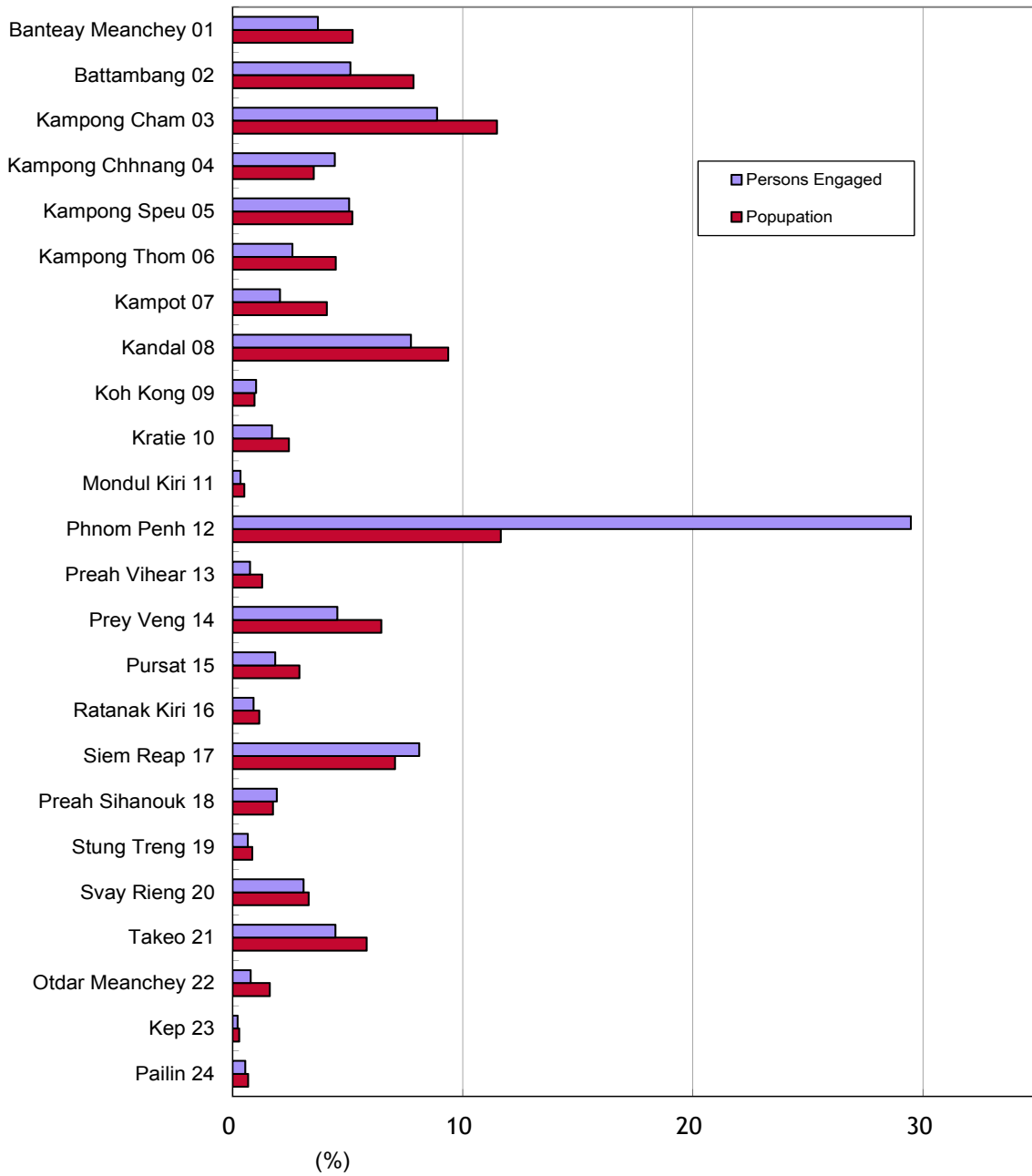


\* New establishments mean establishments which started business between 1 January 2011 and 1 March 2014.

\*\* ISIC stands for International Standard Industrial Classification.

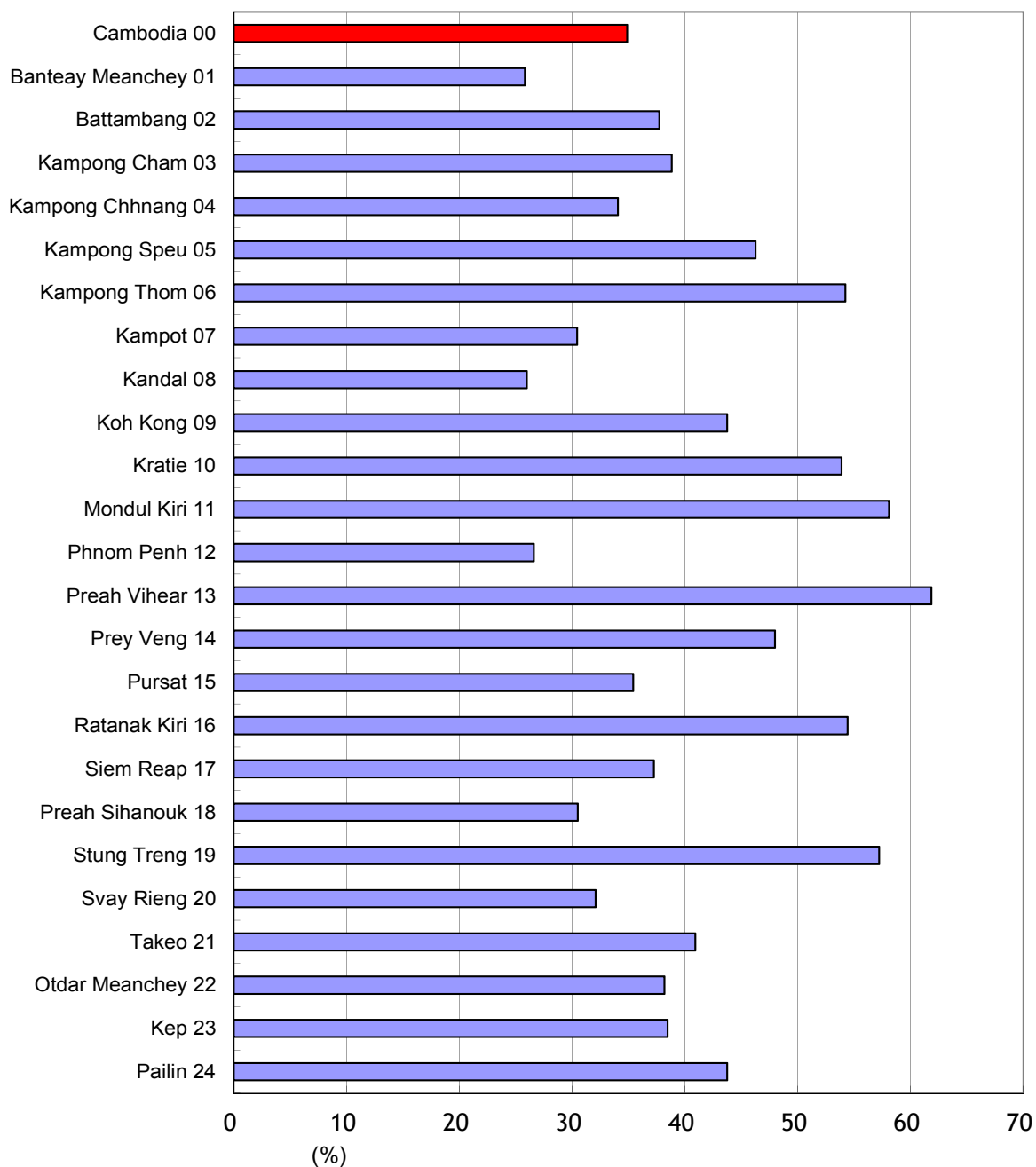


**Graph 7. Percent to Total Number of Persons Engaged except Street Businesses of Cambodia by Province (2014) and Percent to Total Population of Cambodia by Province (2014)**



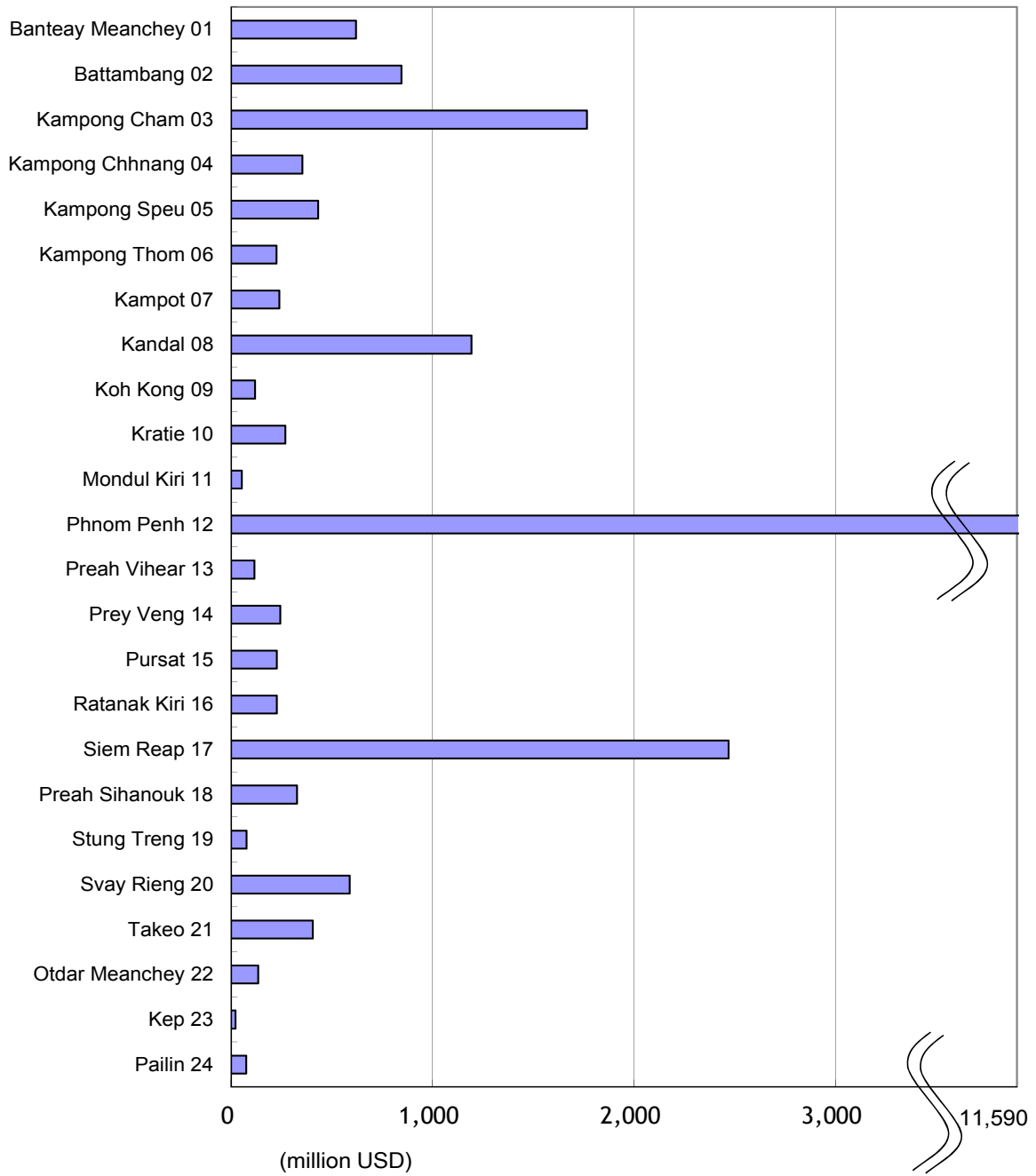
\* The population projection estimates for 2014 are used in this graph.

**Graph 8. Ratio of Persons Engaged in New Establishments except Street Businesses by Province (2014)**



\* New establishments mean establishments which started business between 1 January 2011 and 1 March 2014.

**Graph 9. Annual Sales except Street Businesses by Province (2014)**



**Graph 10. Annual Expenses except Street Businesses by Province (2014)**

