

***Business Register in an Integrated
Business Statistics Production
System***

25th Meeting of the Wiesbaden Group on Business Registers
- International Roundtable on Business Survey Frames
Tokyo, 8 - 11 November 2016

Outline

1. Business Register prior 2013
 - ✓ Roles, Sources, Statistical Units
2. Business Register in an Integrated Business Statistics Production System since 2013
 - ✓ Main Objectives and Achievements
3. Concluding and for Discussion

Business Register prior 2013: Roles of the Register

1. An important data source and a sampling frame to all business and economic statistics
 - Nevertheless, case specific differences in unit structures, classifications and concepts remained
 - Business Register and each of the business statistical domains operated on their own separate platforms
2. A basis for regular data deliveries – both on aggregate and micro data level – outside the NSI to various users and interest groups

Business Register prior 2013: Sources

- A good basis of information on the legal unit level from administrative sources
 - The most central source is the Finnish Tax Authorities database
- Direct data collection inquiries focus especially on the establishment (LKAU) level data
 - Basic data, demographic data, employment and turnover data
- Data provided to us from different statistics through close co-operation (including also more informal methods; like feedback)

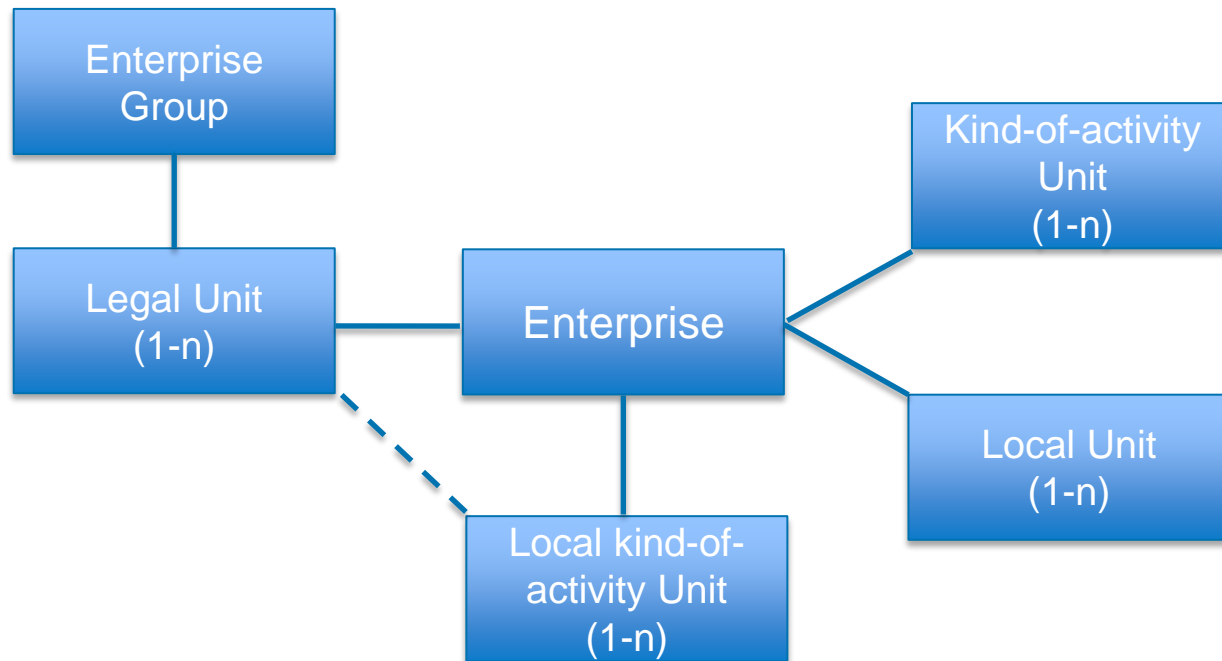
Business Register prior 2013: Statistical Units

- Legal unit = Enterprise
 - The previous Business Register production system was built on the legal unit = enterprise -model
- Establishment (LKAU)
 - Main statistical units in the system; updated manually based on surveys
- Local Unit
 - Manually compiled; sometimes incoherency with establishments
- Enterprise Group
 - Group data was stored closely linked to the Business Register but in a separate database and on a different server
 - Group structures were not fully depicted on the Business Register software application

Main Objectives for the Integrated Business Statistics Production System

- To strengthen the role of Business Register as the backbone of Business and Economic Statistics
 - All central Business Statistics are connected in a Data Warehouse, which serves as an input to e.g. National Accounts as well
- To improve consistency between Business Register and Business Statistics
 - Harmonised unit structures, classifications and concepts
 - Integration and harmonisation of the annual publications
- To eliminate overlapping work phases
 - Only one, centralised system to maintain
 - Editing and corrections are done in one place only
 - Data collection synergies; e.g. turnover data

Statistical Units in the Integrated System



- Enterprise and establishment are the main units in production
- Local Units are compiled methodologically, fully coherent with establishments
- Enterprise Group data integrated with the rest of the Business Register

Concluding and for Discussion

There are advantages

- Consistency between the Business Register and Business Statistics
- Elimination of overlapping work phases
- Enhanced co-operation between statistical domains
- Opportunity to gain cross-domain expertise

...and challenges to an integrated system

- Demand for a more extensive cross-domain expertise and a more extensive selection of variables from the Business Register
- Complexity of the system and a variety of requirements

➤ The key is in the *balance*...

Your experiences on similar systems or thoughts on the issue?



Thank You!

Statistics Finland 

Hanna Heljala hanna.heljala@stat.fi

25th Meeting of the Wiesbaden Group on Business Registers
- International Roundtable on Business Survey Frames

Tokyo, 8 - 11 November 2016