

Statistics

for Japan's future



Statistics Japan

Statistics Bureau
Director-General for Policy Planning (Statistical Policy)
Statistical Research and Training Institute
Ministry of Internal Affairs and Communications, JAPAN
National Statistics Center

Statistical System of Japan

Statistical Organizations of Japan

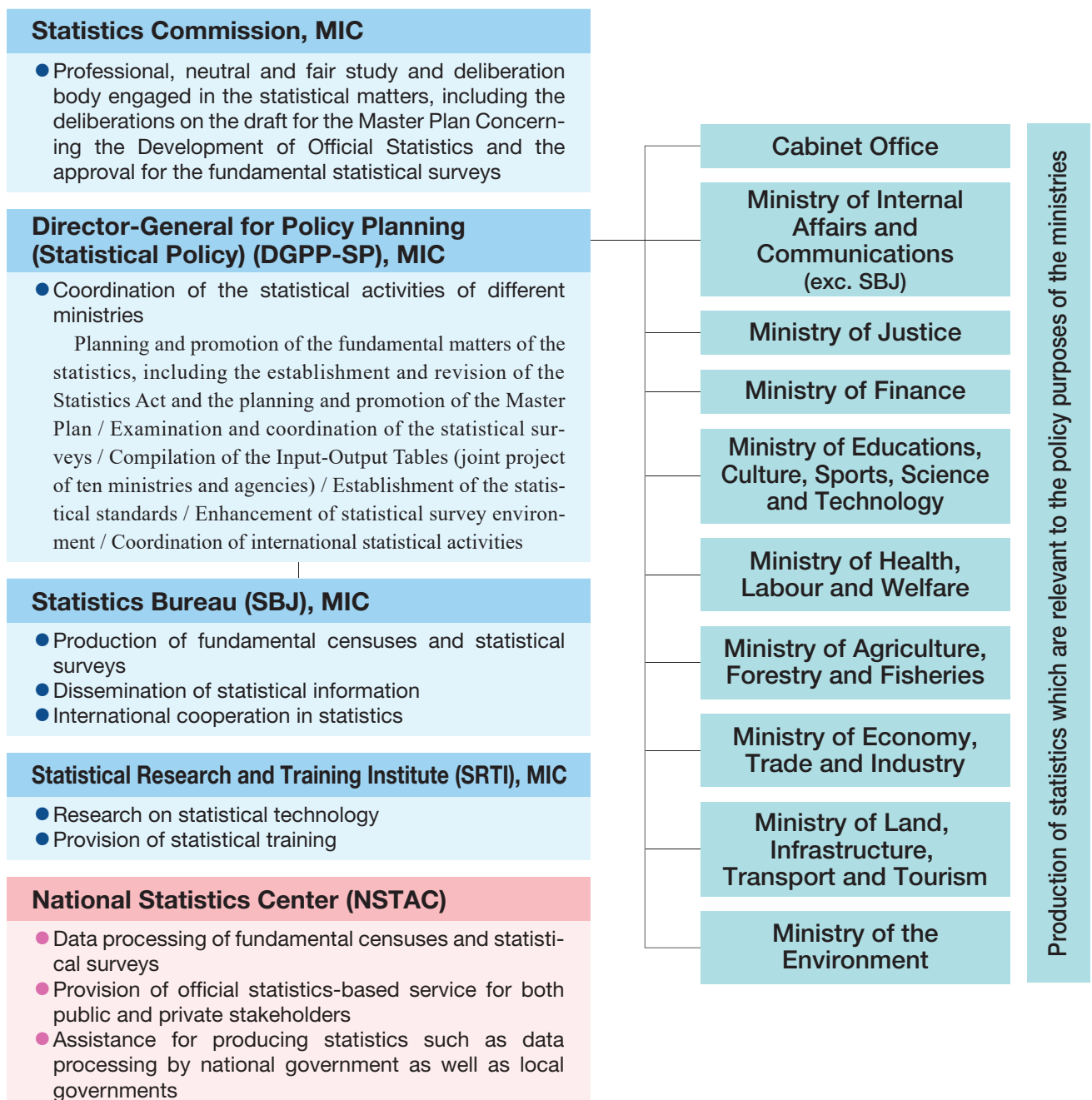
The statistical system of the Japanese government is decentralized, in that, while the **Statistics Bureau (SBJ)** conducts **fundamental censuses and statistical surveys**, other relevant ministries produce statistics for their own policy purposes.

Under this decentralized system, it is generally difficult to maintain consistency in statistical activities among different ministries, and to avoid duplication in the compilation of statistics. Therefore, the **Director-General for Policy Planning (Statistical Policy) (DGPP-SP)** is responsible for coordinating the statistical activities of different ministries.



The Ministry of Internal Affairs and Communications (MIC) plays key roles in the Japanese Official Statistics

Statistical Organizations of Japan



Point of Official Statistical System

◆ Statistical Surveys Conducted by National Administrative Organs

Statistical surveys request individuals, juridical persons or other organizations to report facts for the purpose of producing statistics. Statistical surveys conducted by national administrative organs are divided into two categories: “Fundamental Statistical Surveys” conducted to produce “Fundamental Statistics” and otherwise “General Statistical Surveys.”

Statistical surveys conducted by the national administrative organs undergo individual clearance through the Minister for Internal Affairs and Communications with a view to reducing the reporting burden by eliminating duplication among statistical surveys.

◆ Fundamental Statistics

Among the statistics produced by the administrative organs, especially the important ones are identified as the Fundamental Statistics and developed systematically. The Fundamental Statistics are defined by the Statistics Act as follows:

- Population Census
- National Accounts (SNA)
- Statistics that are or are to be produced by administrative organs and are designated by the Minister for Internal Affairs and Communications as those falling under any of the following:
 - Statistics that are particularly important for planning national policies and implementing them
 - Statistics that are expected to be widely utilized for decision-making or research activities in the private sector
 - Statistics that are required to be produced by international conventions or plans established by international organizations or that are particularly important in view of international comparability

There are total 54 fundamental statistics as of January 2025.

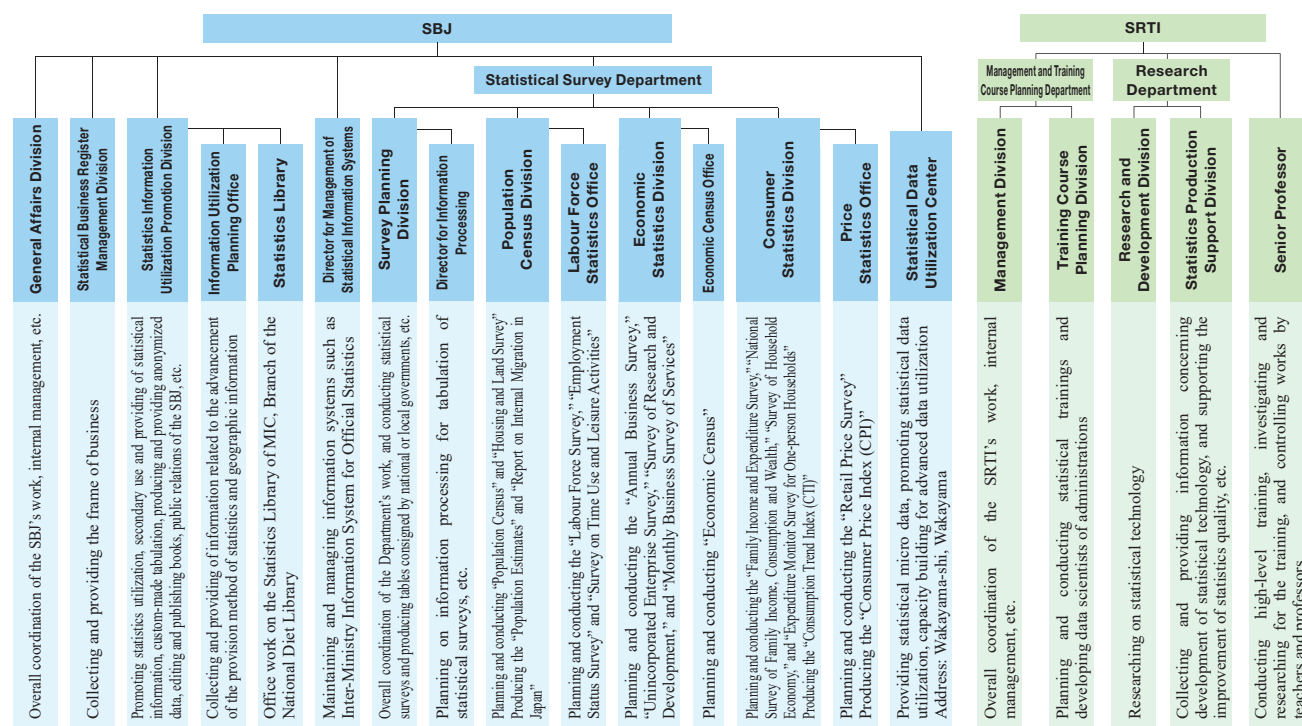
The **Fundamental Statistical Survey**, of which accuracy is highly demanded and necessary to produce Fundamental Statistics, has the special regulations as follows:

- **Obligation to report**
- **Prohibition of impersonating Fundamental Statistical Surveys**
- **Affairs undertaken by local public entities**

◆ Confidentiality of Personal Information on Respondents of a Statistical Survey

Persons who are officially engaged in handling of questionnaire information and trustees of statistical surveys have a duty that they shall not divulge any confidential information of the respondents that may have come to their knowledge in the course of duties. Those who violate the prohibition are sentenced to imprisonment for not more than two years or a fine of up to one million yen.

Organization of the SBJ and SRTI



(as of January 2025)

Production of Fundamental Censuses and Statistical Surveys

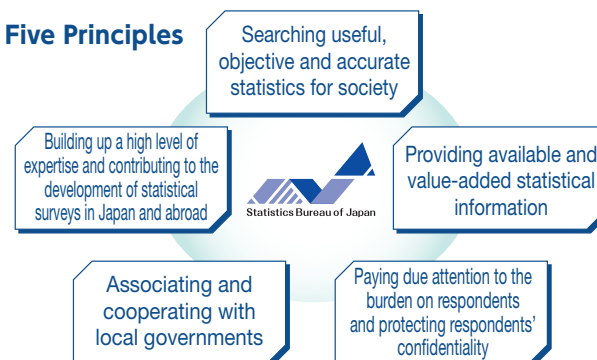
SBJ's Mission and Principles – As Central Organization of Official Statistics –

Statistics is necessary for the administration and the decision-making of companies as an “information platform for society.”

We systematically develop and disseminate relevant and reliable statistics which meet the needs arising from socioeconomic changes, and provide them in a timely and proper manner. We aim to support the planning, formulation and evaluation of governmental policies, and assist in rational decision-making by individuals and businesses.

Moreover, we strive to contribute towards the improvement of people's lives, and development of the society and economy.

Five Principles



Production and Provision of Fundamental Censuses and Statistical Surveys

◆ List of Statistics Produced by the SBJ

The SBJ plans and conducts the important statistical surveys of Japan, and prepares and provides accurate statistics that are beneficial for society, by responding adequately to socioeconomic changes in our country.

The representative examples are the Population Census and the Economic Census.

These two are complete censuses where the entire population is surveyed.

	Cycle	Since	Latest surveys
● Population <u>Population Census</u> <u>Population Estimates</u> Report on Internal Migration in Japan	Quinquennial Monthly Monthly	Oct. 1920 Oct. 1921 Jan. 1954	Oct. 2020 — —
● Housing & Land <u>Housing and Land Survey</u>	Quinquennial	Aug. 1948	Oct. 2023
● Employment & Unemployment ★ <u>Labour Force Survey</u> <u>Employment Status Survey</u>	Monthly Quinquennial	Sep. 1946 Jul. 1956	— Oct. 2022
● Lifestyle <u>Survey on Time Use and Leisure Activities</u>	Quinquennial	Oct. 1976	Oct. 2021
● Establishments & Enterprises <u>Economic Census for Business Frame</u> <u>Economic Census for Business Activity</u> <u>Annual Business Survey</u> <u>Unincorporated Enterprise Survey</u> <u>Monthly Business Survey of Services</u>	Quinquennial Quinquennial Yearly*1 Yearly Monthly	Jul. 2009 Feb. 2012 Jun. 2019 Apr. 1952 Jan. 2025	May to Jul. 2024 Jun. 2021 — — —
● Research & Development <u>Survey of Research and Development</u>	Yearly	Aug. 1953	—
● Household Economy ★ <u>Family Income and Expenditure Survey</u> Survey of Household Economy <u>National Survey of Family Income, Consumption and Wealth</u> *2 National Income and Expenditure Survey for one-person households Expenditure Monitor Survey for One-person Households Consumption Trend Index (CTI)	Monthly Monthly Quinquennial Quinquennial Monthly Monthly	Jul. 1946 Oct. 2001 Sep. 1959 Sep. 2009 Aug. 2017 Jan. 2018	— — Oct. to Nov. 2024 Oct. to Nov. 2024 — —
● Prices <u>Retail Price Survey</u> ★ <u>Consumer Price Index (CPI)</u>	Monthly Monthly	Jun. 1950 Aug. 1946	— —
● Region Grid Square Statistics	—	Oct. 1965	—

The results with ★ are reported monthly at the Cabinet meeting by the Minister.

Underlined are the fundamental statistics.

*1 Except the years in which the Economic Census for Business Activity is conducted

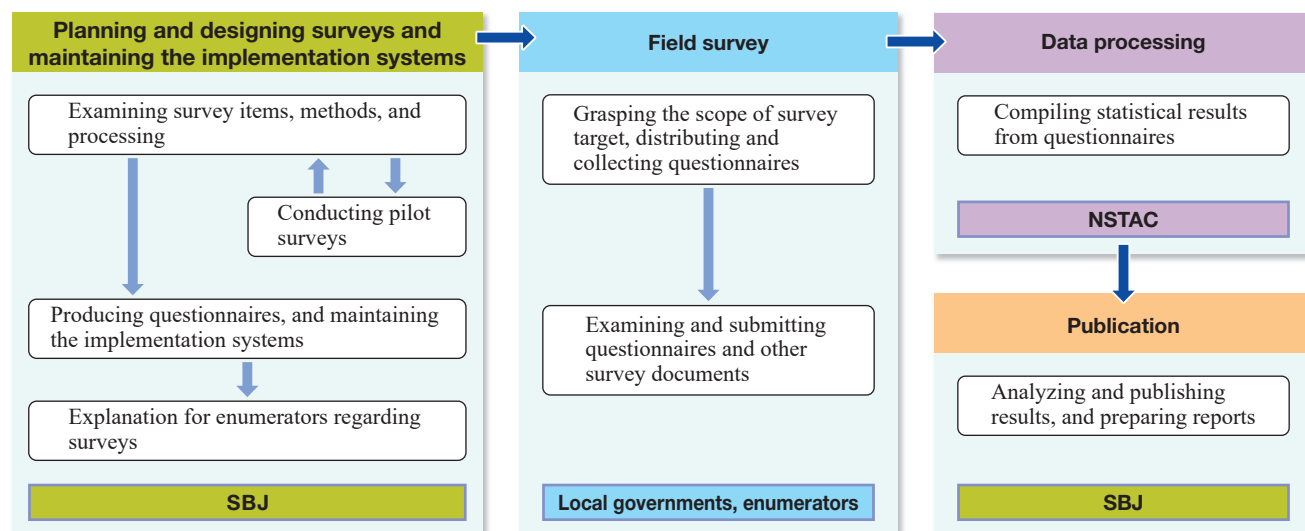
*2 Prior to 2019, the survey was conducted as the National Survey of Family Income and Expenditure

(as of January 2025)

Flow of Statistical Survey

Production of Statistics

Major methods of statistics production include the method mainly based on statistical survey, method to tabulate materials held by government agencies, and method to estimate by processing and calculating other statistics and data. Statistical survey is produced in the SBJ basically following the flow as shown below.

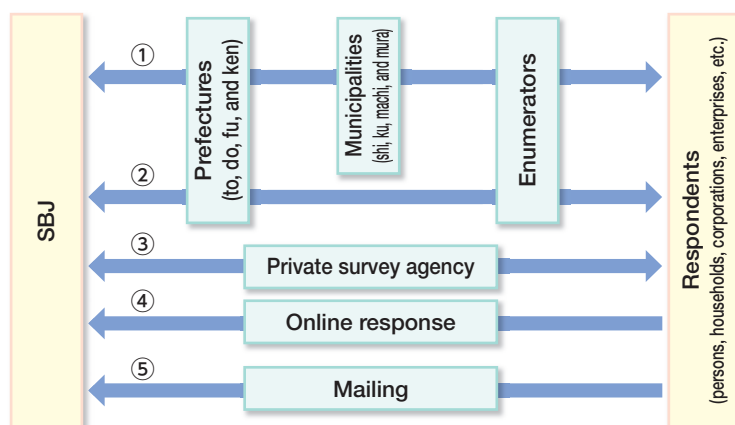


Planning and designing surveys and maintaining the implementation systems

Survey items, methods, and processing are examined according to the features and purposes of surveys, to formulate survey plans and to prepare documents and design systems necessary for implementing surveys. Survey implementation systems such as the arrangement of enumerators are also established.

Field survey

In cooperation with local governments and enumerators, identifying respondents, questionnaires are distributed and requested to be filled out, and collected and examined during the designated period and in accordance with the designated method.



※Most of the field surveys on the fundamental statistical surveys arranged by the SBJ are conducted by local governments as the statutory entrusted functions based on the Statistics Act, while some surveys are entrusted to private survey agencies.

※In the surveys conducted by the SBJ, the enumeration such as distribution and collection of questionnaires are carried out by five flows depending on the nature of the respective surveys by considering the efficiency.

– Role and Importance of Enumerators –

In conducting the statistical survey, it is very important for us to accurately grasp respondents (survey targets) and to have them fill out questionnaires correctly. The enumerators get survey cooperation by visiting the survey area to grasp the survey targets (respondents), meeting the people to be surveyed face to face, and explaining the purpose of the survey and how to fill out questionnaires. Through such cooperation between the enumerators and local governments, the statistical survey is conducted smoothly.

Data processing

The submitted questionnaires are delivered from the SBJ to the NSTAC, then are processed after checking the data quality by converting the questionnaires into data, coding based on the stipulated classification criteria, checking and investigating the data, and tabulating and validating the statistical tables.

Publication

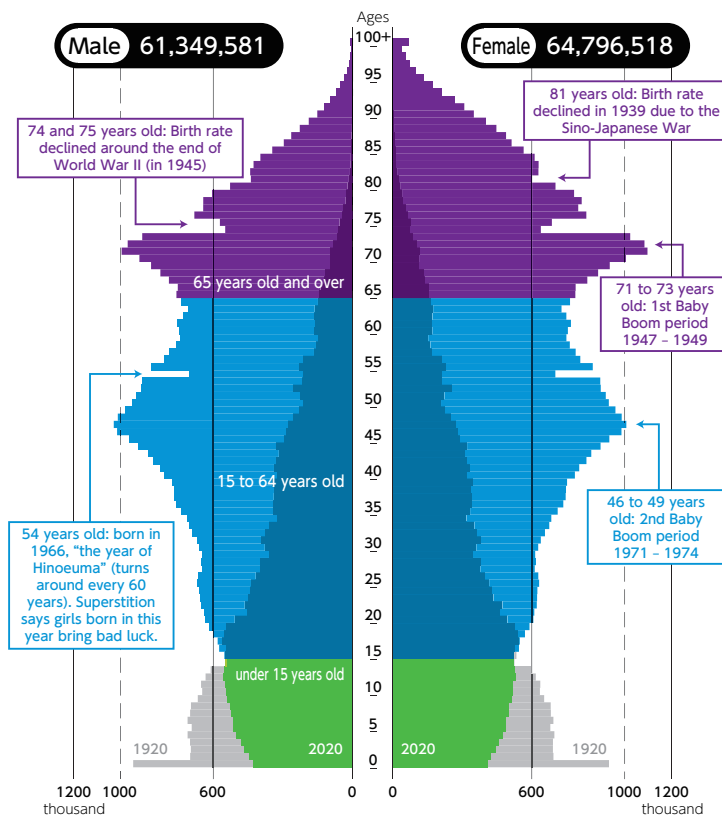
The processed results are analyzed and published by SBJ. The survey results with a summary of the results and statistical tables are provided through the internet.

Statistics Produced by the SBJ

Population Census

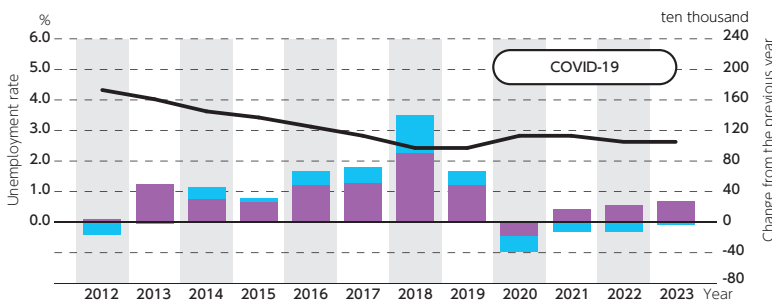
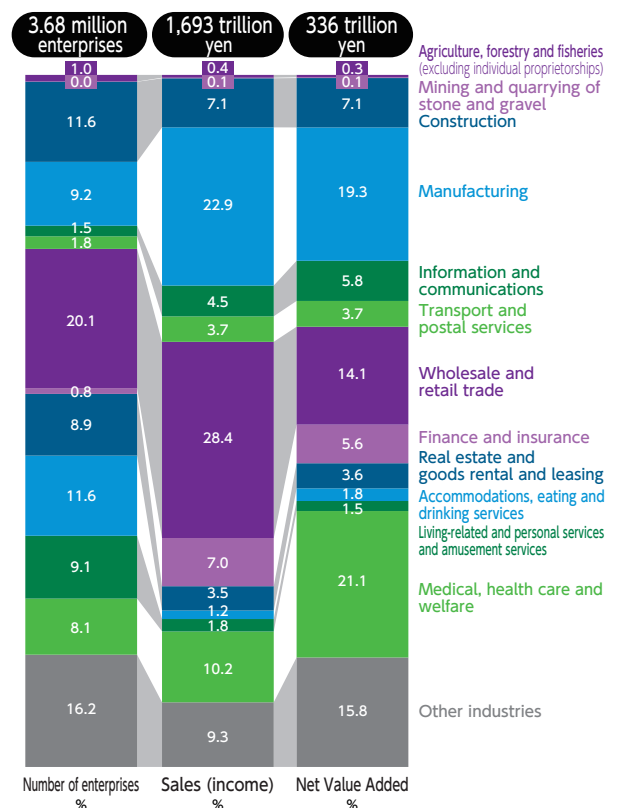
Change of Population Pyramid (1920 and 2020)

* 2020 is the Result with Imputation



Economic Census for Business Activity (2021)

Composition Ratios of Number of Enterprises, Sales (income), and Net Value Added by Industry Divisions

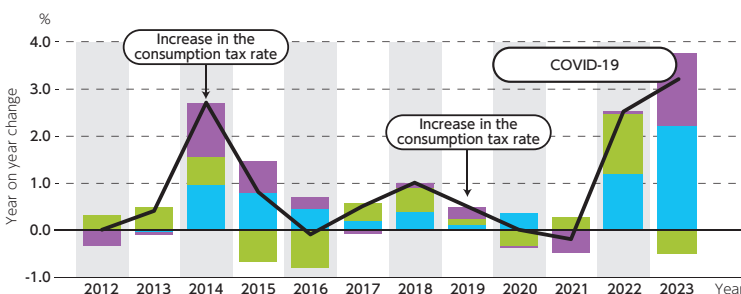


Labour Force Survey

Unemployment Rate and Change of Number of Employed Persons by Sex 2012 - 2023

Legend:

- Change from the previous year (male)
- Change from the previous year (female)
- Unemployment rate

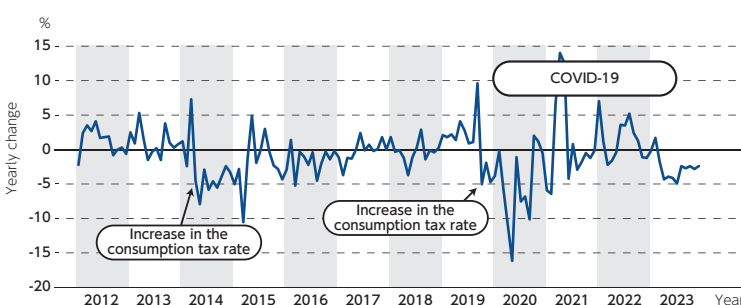


Retail Price Survey, Consumer Price Index (CPI)

Year on year change in CPI (Japan) (2012 - 2023)

Legend:

- Contribution of food
- Contribution of energy
- Contribution of other items
- Year on year change of all items



Family Income and Expenditure Survey

Percentage Change of the Yearly Average of Monthly Consumption Expenditures in Real Terms from the Previous Year

Two-or-more-person Households / 2012 - 2023

* The change in real terms indicates the increase or decrease in the actual amount after deducting price fluctuations from the amount paid (nominal), which correspond to changes in quantity or quality. The Consumer Price Index (All items, less imputed rent) is used to convert to real terms.

* As the account book used for the survey was revised on January 2018, the data from January 2018 to December 2019 are "discontinuity-adjusted figures" that calculated to remove gaps influenced by the revision.

Providing Statistical Data and Promoting the Advanced Data Usage

As a central organization of official statistics in Japan, the SBJ is engaged in providing highly convenient statistical data and functions, and promoting the advanced usage of statistical data.

Inter-Ministry Information System for Official Statistics

The SBJ is maintaining an online survey system and the Portal Site of Official Statistics of Japan (e-Stat) as systems common to ministries that can be used at each stage of statistical surveys, including planning, preparing, implementing, examining and data providing.

In order to improve the convenience of statistical data use, the SBJ promotes efforts to maintain the data in ministries and agencies from a unified perspective.

Portal Site of Official Statistics (e-Stat)

The Portal Site of Official Statistics of Japan (e-Stat) collects and integrates statistical data released by respective ministries and has many convenient functions to utilize statistics such as searching of the statistical data and displaying it on a map.

Necessary data can be searched from more than 680 official statistics by “theme,” “organization,” or “keyword.”

In addition to the portal site function, the following analysis tools are provided.

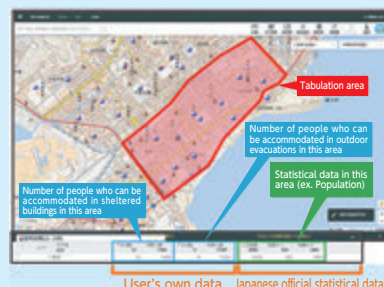


◆ Statistics with Map (jSTAT MAP) - Only available in Japanese

The following functions can be provided in order to produce statistical maps and perform regional analysis for users such as disaster prevention, maintenance of facilities and market analysis:

- (1) Function to display a combination of user's own data and Japanese official statistical data on a map
- (2) Function to calculate statistics for an arbitrarily specified area
- (3) Function to create regional analysis reports

Displays using Japanese official statistical data and user's own data



Regional analysis reports



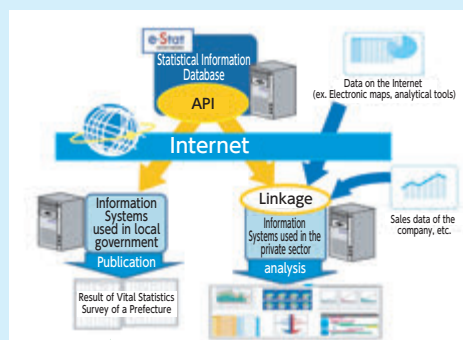
◆ Statistics Dashboard

About 5,000 major statistical data provided by the national government and private companies are stored by categorizing them in 17 statistical fields, and are provided in a visually comprehensible fashion by processing into graphs and time-series tables to show in a list.



◆ API (Application Programming Interface) function

API is a function to obtain data directly and automatically using programs created by user through the internet.



When e-Stat data is updated, data of user is also automatically updated.

Advanced analysis can be performed using time series and geographic information by combining official statistics data with user's own data, electronic maps, and analytical tools.

e-Stat



Statistics
Dashboard



API



Statistical Data Utilization Center

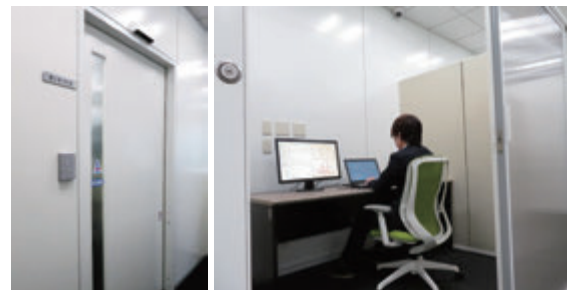
As a promotion base for advancing data utilization, the Statistical Data Utilization Center is established in Wakayama Prefecture, which provides statistical micro data that enable advanced data analysis utilizing ICT. Also, in cooperation with Wakayama Prefecture, advanced case examples of the utilization of statistical data are developed nationwide to promote initiatives contributing to vitalizing local communities.

Provision of Statistical Micro Data*

The Center establishes an on-site environment enabling advanced data analysis while ensuring information security, to provide statistical micro data. It is expected that this allows various types of analysis and leads to additional discovery contributing to resolving regional problems.

In addition, procedures on the usage of the on-site facility, the list of statistical data available for use, and the case examples of the actual use of statistical micro data by researchers are consolidated into the “Micro Data Usage Portal Site (*miripo*)” to transmit information to users.

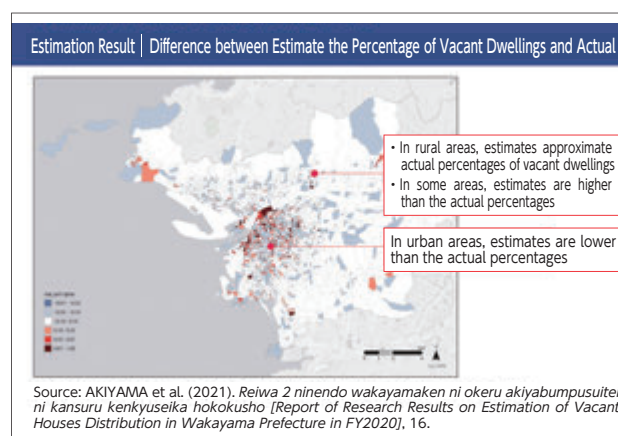
* Statistical micro data: individual data before tabulation on each household or business base, that are collected through statistical surveys, etc.



On-site facility



“Micro Data Usage Portal Site (*miripo*)”
(Only available in Japanese)

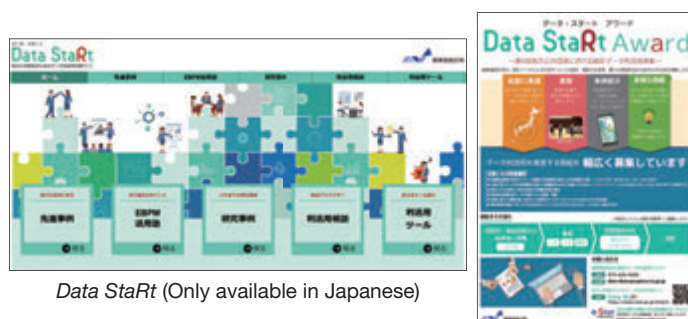


Estimation of housing vacancies using statistical micro data and administrative data

Promoting and Supporting Data Utilization Contributing to the Development of Data Science and EBPM

While supporting initiatives by local governments on statistical data utilization, leading cases of data utilization will be created in cooperation to be developed throughout the nation.

Also, local governments implementing excellent initiatives on statistical data utilization are given commendation, and some advanced case examples are introduced on the Data Utilization Support Site for Local Governments (*Data StaRt.*) (Only available in Japanese)



Data StaRt (Only available in Japanese)

Fostering Personnel for the Utilization of Statistical Data

Lecturers are dispatched to workshops and seminars held by local governments, and in addition to holding lectures under the themes of statistical data utilization and EBPM, examples of actual utilization initiatives are introduced.

Furthermore, events are held to utilize statistical data for business persons.

Dissemination of Statistical Literacy

In order to promote adequate utilization of statistical data, initiatives are implemented to let people understand the usability of statistics and to improve their capability to utilize statistical data. Also, information on sites useful for studying statistics at schools is provided.

◆Data Science Online Course (Only available in Japanese)

Online courses where anyone can learn the basics of statistics, how to read data, and practical data analysis



◆Data Science School (Only available in Japanese)

Study website where data utilization methods or knowledge on statistics can be learned anytime



◆“Kids Stat - Let's Look for Statistical Data -” (Only available in Japanese)

Website for elementary and junior high school students to search statistical data



◆Website to Learn Statistics

Statistics Academy (For elementary/junior-high school students) (Only available in Japanese)

Website to make students feel familiar with statistics and learn about statistics from various aspects, including basic knowledge and the analysis method of tabulated data



Statistics Library

Statistics Library is specializing in statistics, housing collections of domestic and overseas materials related to statistics. In addition to providing library service to the members of the Diet, administrative and judicial staff, as a branch library of the National Diet Library, it is also open to the general public. The Statistics Library also provides a consultation service related to statistics.

Statistics Museum

The museum is established in order to help more people become interested in statistics and gain further understanding of statistical surveys. Panels that give a vivid sense of the history of statistics and valuable historical materials are displayed, which can be accessed by anyone. [Admission Free]

Address: Wakamatsu-cho 19-1, Shinjuku-ku, Tokyo 162-8668

Opening Hours: 09:30 – 17:00

Closed: Saturday, Sunday, National holidays, year-end and New Year's holidays

International Cooperation in Statistics/ Statistical Research and Training Institute (SRTI)

International Cooperation in Statistics

The SBJ promotes international cooperation and exchanges related to statistics, backed by the statistical technology it has cultivated over the years.

◆ Technical Cooperation for Foreign Countries

In order to improve the statistics technology in foreign countries, the SBJ dispatches statistical experts and receives trainees to/from Mexico, Sri Lanka, the Philippines, Argentina, Indonesia, Myanmar, Tanzania, Cambodia, Nepal, Egypt, etc. in response to requests from such countries and international organizations.

◆ Hosting International Conferences

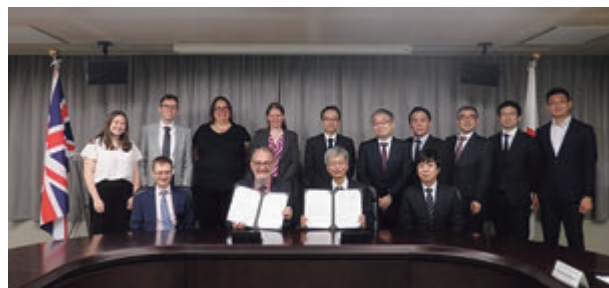
We host international statistical conferences such as meetings of the international experts groups under the umbrella of the UN Statistical Commission and/or statistical seminars every year. Through these international conferences, we actively promote information exchange on statistics.



45th International Association for
Time Use Research Conference, November 2023

◆ Bilateral Cooperation

The SBJ has been promoting exchanges of statistical missions with China and Korea almost every year over 40 years to discuss matters themed on important issues. Also, the memorandums on the cooperation (MoC) were signed with Vietnam in January 2015, and with Mongolia in February 2017. Furthermore, we signed the MoC with the UK Statistics Authority (UKSA) in May 2023.



MoC with the UKSA, 2023

◆ Receiving Visitors from Abroad

We welcome overseas governmental officials who visit Japan for specific purposes, including exchanging information and training on statistics. Through receiving more than 100 international visitors every year, we exchange information to understand the current situation in each country and to improve understanding of Japan's statistical system.

Statistical Research and Training Institute (SRTI)

SRTI studies statistical technology and supports statistical technology upon request from administrations and local governments, while also being engaged in the planning and implementation of training on the basic theory of statistics and technical training on statistics including analysis, targeted to the staff in national and local governments and public organizations.

◆ Research on Statistical Technology

The following research activities are promoted to appropriately correspond to the R&D of advanced statistical technology, the enhancement of support to administrations and the utilization of big data

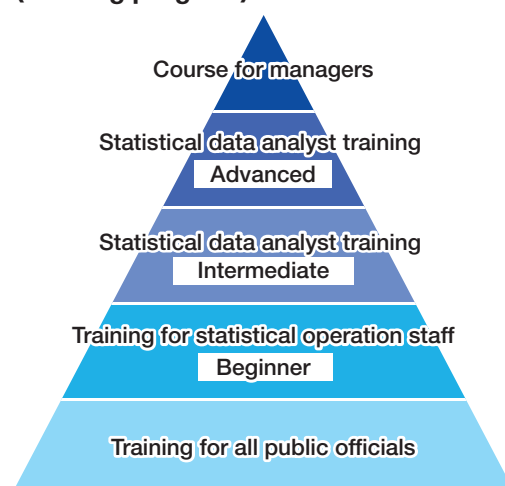
- Collecting, arranging and researching the information concerning big data
- Collecting and researching the information concerning the statistical technology common to administrations
- Supporting the statistical technology requested by administrations and local governments
- Conducting the advanced utilization of statistics and various research studies cooperating with visiting professors and external experts for joint researches mainly with universities and private enterprises

◆ Conducting Statistical Training

As the sole statistics staff training institute in Japan, the SRTI conducts training for staff in national and local governments and staff in public organizations, with an aim to fostering personnel who can serve a central role in producing statistics and to improve their statistics literacy to utilize statistics in policy planning, etc.

In addition to providing group training, the SRTI also improved training utilizing ICT, such as the live streamed training and e-learning style online training, to make the training program available widely.

〈Training program〉



Director-General for Policy Planning (Statistical Policy) (DGPP-SP)/ National Statistics Center (NSTAC)

Director-General for Policy Planning (Statistical Policy) (DGPP-SP)

DGPP-SP is in charge of the government-wide coordination of statistical activities, based on the Statistics Act. Duties include fundamental planning related to improving and developing statistics and the statistical system. has the role of implementing cross-governmental coordination to ensure systematic and efficient maintenance of official statistics and allow the improvement of their usability, from various perspectives including the establishment and revision of the Statistics Act and related ordinances.

◆ Planning and Promoting the Master Plan Concerning the Official Statistics

“Master Plan Concerning the Development of Official Statistics” is formulated according to Article 4 of the Statistics Act, in order to promote measures comprehensively and systematically concerning the development of official statistics, which is important information for the people. In other words, it is a “compass” showing the direction for the government to realize statistics reform in the future. The DGPP-SP is engaged in the planning and promotion of the Master Plan in cooperation with different administrative organs.

DGPP-SP is also engaged in the establishment of statistical standards, which are technical standards to ensure the uniformity and integrity of statistics produced by administrative organs, including the Japan Standard Industrial Classification.

◆ Examination and Coordination of Statistical Survey

The Statistics Act provides that the Minister for Internal Affairs and Communications examines and approves the fundamental statistical surveys and general statistical survey to be implemented by the head of an administrative organ in advance.

DGPP-SP examines plans for statistical surveys from the perspectives of (1) whether the detail of survey suits the aim of producing statistics, (2) whether the detail of the statistical survey is rational and adequate, and (3) whether there is any excessive duplication with other surveys, in order to produce statistics with secured accuracy and reduce the burden of reporters. Upon the examination of fundamental surveys, opinions from the Statistics Commission, which is the specialized organization of statistics, is sought.

◆ Coordinating International Statistical Affairs

DGPP-SP coordinates international statistical affairs, offers various international cooperation on statistics to international organizations including the United Nations (UN), International Monetary Fund (IMF), Organization for Economic Co-operation and Development (OECD) and to foreign countries, including participation in international meetings and international statistics projects, and the exchange of statistics information. Further, a training session on statistics targeted to the statistics personnel of the government in the developing countries in Asia-Pacific Region is implemented, and financial support and clerical work cooperation are offered to the United Nations Statistical Institute for Asia and the Pacific (SIAP), which is established to improve capacities to produce statistics and implement training conducive to the economy and social development of the country.

National Statistics Center (NSTAC)

As an agency that plays a part in the central statistical body, the NSTAC focuses on the three management missions of “Producing Reliable Statistics (Produce Statistics),” “Promoting Utilization of Statistical Data (Utilize Statistics),” and “Supporting the Development of Official Statistics (Support Statistics).”

◆ Producing Statistics (Data processing)

NSTAC aggregates data that collected by the statistical surveys based on a designated process.

We produce statistics attaching great importance to “Ensuring reliability of statistics” and “Improving statistical technology” to satisfy the three principles for data processing: “Accuracy” to ensure the statistical accuracy, “Timeliness” to provide results in a timely manner and “Cost effectiveness” to use efficient means and appropriate methods.

◆ Promoting Statistics Utilization

NSTAC is providing various services useful for the utilization of statistical data in cooperation with the SBJ, for the convenience of users to use statistics. (Various functions of e-Stat, provision of statistical micro data, etc.)

◆ Supporting the Development of Official Statistics

NSTAC is engaged in the operation and management of the Inter-Ministry Information System for Official Statistics (IMISOS), which offers a common basis for the services and usage of official statistics. The NSTAC also supports official statistics for the statistical survey implemented by different ministries and agencies through the consignment of data processing and the implementation of surveys.



SBJ / DGPP-SP / NSTAC

19-1 Wakamatsu-cho, Shinjuku-ku, Tokyo 162-8668

[Tel] SBJ / DGPP-SP : +81-3-5273-2020

NSTAC : +81-3-5273-1200

By Rail

Subway

Toei Oedo Line: about 5 min. on foot from Wakamatsu-Kawada Station

Tokyo Metro Tozai Line: about 15 min. on foot from Waseda Station

Tokyo Metro Fukutoshin Line: about 10 min. on foot from Higashi-Shinjuku Station

By Bus

Bus from JR Shin-Okubo Station or JR Okubo Station

Take the Toei bus for Shimbashi Station or Iidabashi Station (about 10 min.)

Soon after getting off at “Kokuritsu Kokusai Iryo Kenkyu Center Mae.”

Statistical Data Utilization Center

Nankai Wakayama-shi Station Building, Office Building 5th Floor

3-17 Higashi kuramae-cho, Wakayama-shi, Wakayama 640-8203 Japan

[Tel] +81-73-425-0205

By Rail

Nankai Electric Railway

Nankai Main Line: get off at the WAKAYAMASHI Station.

The Center is located next to the WAKAYAMASHI Station.

By Bus

Bus from JR Wakayama station on Hanwa Line, Kisei Line, etc.

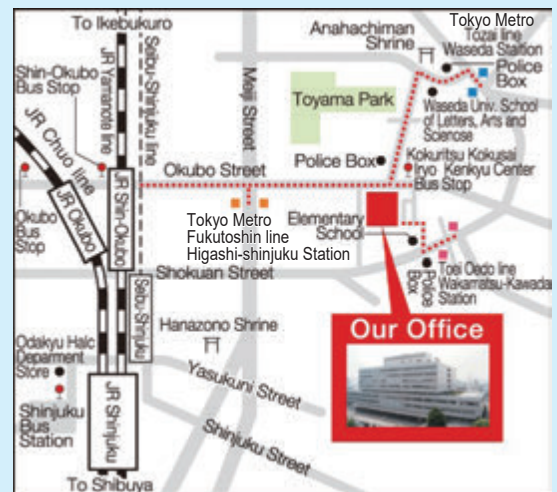
Take the bus at “JR WAKAYAMA STA. (WEST)(Bus stop: 3)” and

get off at the last stop, “NANKAI WAKAYAMASHI STA” (about 15 min.)

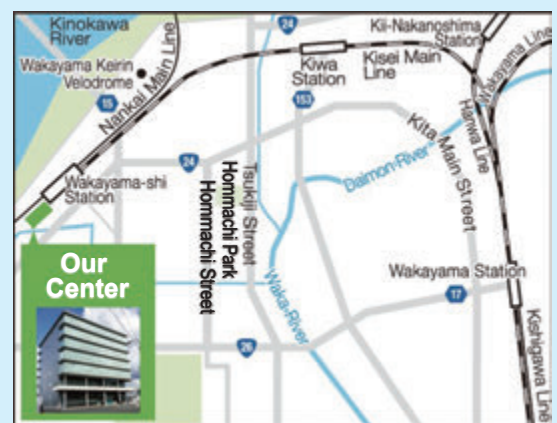
By Taxi

About 10 min. from JR Wakayama Station

〈Route map〉



〈Route map〉



SRTI

2-11-16 Izumi-cho, Kokubunji-shi, Tokyo 185-0024

[Tel] +81-42-320-5870

By Rail

About 6 min. on foot from the south gate of Nishi Kokubunji

Station on JR Chuo Line / Musashino Line.

〈Route map〉



SBJ

<https://www.stat.go.jp/english/index.html>



GDPP-SP

https://www.soumu.go.jp/english/dgpp_ss/index.htm



NSTAC

https://www.nstac.go.jp/en/?doing_wp_cron=1728526894.9972689151763916015625



SRTI

<https://www.stat.go.jp/training/english/e-index.html>

