

[Results regarding Yearly income, Asset Distribution, etc. (Gini coefficients, poverty rate, etc.)]

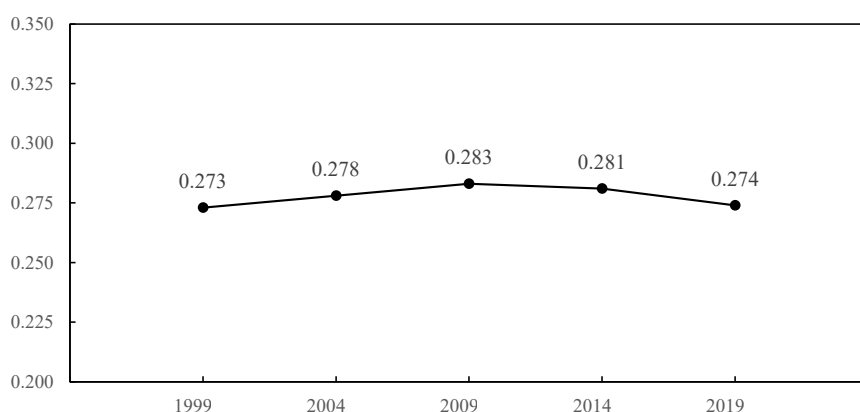
<Degree of uniformity of yearly income, etc.>

Gini coefficients of income (equivalized disposable income) decreased 0.007 compared with 2014.

Equivalized disposable income: yearly disposable income (spendable income) of households divided by the square root of the number of the household members

Gini coefficients: index expressing the degree of non-uniformity of yearly income, etc. on a scale from 0 to 1 (uniform at 0 and less uniform as it approaches 1)

Figure 1 Changes in Gini coefficients of equivalized disposable income



Note: the value of 2019 is obtained by using an existing calculation method that allows comparison with the results before 2014, which were disclosed in the past.

Reference 1 Gini coefficients of equivalized disposable income of seven major countries

Country (year of survey)	Gini coefficients
United States (2017)	0.390
United Kingdom (2019)	0.366
Italy (2018)	0.330
France (2018)	0.301
Canada (2019)	0.301
Germany (2018)	0.289
Japan (2019)	0.288

Note: The values are in conformance with the new OECD standard and are internationally comparable.

Source: For Japan, results of the National Survey of Family Income, Consumption and Wealth; for countries other than Japan, OECD Income (IDD) and Wealth (WDD) Distribution Databases

## <Relative poverty>

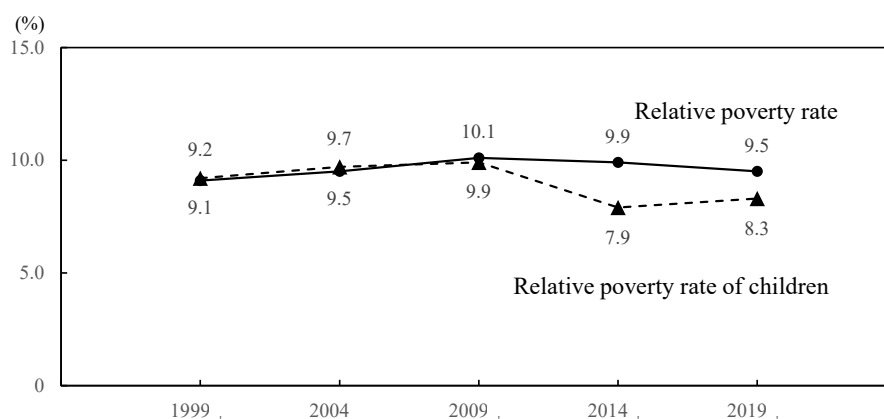
Relative poverty rate fell 0.4 points compared with 2014.

Relative poverty rate of children rose 0.4 points compared with 2014.

Relative poverty rate: the rate of people whose equivalized disposable income is below the poverty datum line (amount that is half of the median value of equivalized disposable income)

Children: people under eighteen years old

Figure 2 Changes in relative poverty rate



Note 1. The value of 2019 is obtained by using an existing calculation method that allows comparison with the results before 2014, which were disclosed in the past.

Note 2. “Relative poverty rate of children” from 1999 to 2014 are results of special tabulation.

## Reference 2 Relative poverty rate of seven major countries

Country (year of survey)	Relative poverty rate (%)	Relative poverty rate of children (%)
United States (2017)	17.8	21.2
Italy (2018)	14.2	18.0
United Kingdom (2019)	12.4	14.1
Canada (2019)	11.6	11.4
Japan (2019)	11.2	10.3
Germany (2018)	9.8	11.1
France (2018)	8.5	11.7

Note: The values are in conformance with the new OECD standard and are internationally comparable

Source: For Japan, results of the National Survey of Family Income, Consumption and Wealth;  
for countries other than Japan, OECD Income (IDD) and Wealth (WDD) Distribution Databases