

## Revision of industrial classification for the Labour Force Survey results

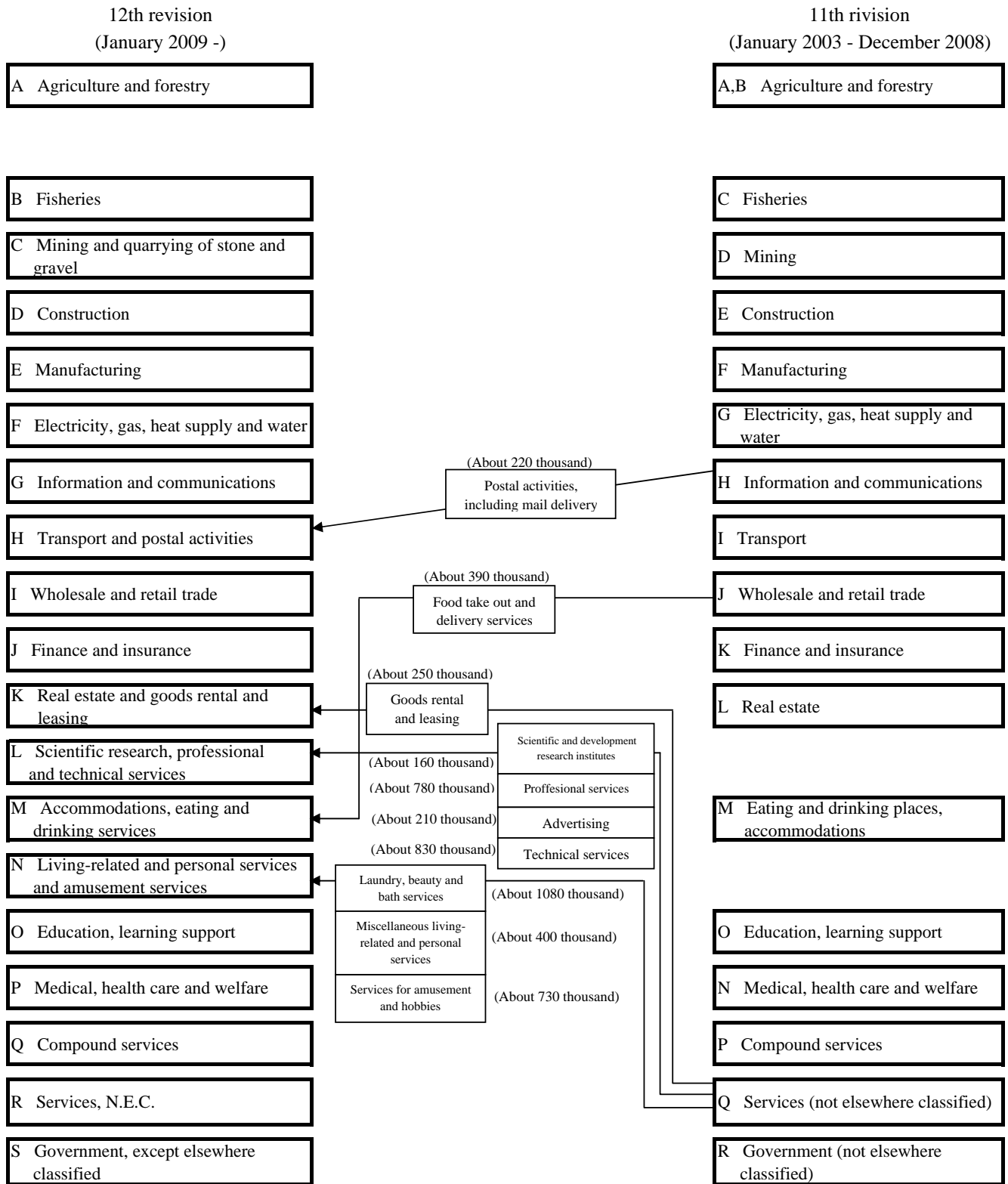
From January 2009 results, the Statistics Bureau will start providing the survey results by the new industrial classification.

In the Labour Force Survey results, the number of employed persons is classified by the Japan Standard Industrial Classification (JSIC). With the 12<sup>th</sup> revision of the JSIC (November 2007), the Statistics Bureau will start providing the Labour Force Survey results by the new industrial classification from January 2009 results.

\* Basic Tabulation: from January 2009 results (to be released on 27 February 2009)

\* Detailed Tabulation: from Jan.-Mar. 2009 average results (to be released at the end of May 2009)

## The matching chart of the new and old industrial classifications (By 12th revision of the Japan Standard Industrial Classification)



(Note) Described are some of the industries which will be shifted to the other codes by the revision of industrial classification, and the figures in ( ) show the estimated numbers of employed persons as for January 2008 results.

(Appendix 2)

## The list of the new industrial classification to be applied to the Labour Force Survey

Classification
Agriculture and forestry
Agriculture
Forestry
Non-agricultural industries
Fisheries
<u>Fisheries, except aquaculture</u>
Aquaculture
Mining and quarrying of stone and gravel
Construction
Manufacturing
Manufacture of food
Manufacture of beverages, tobacco and feed
<u>Manufacture of textile mill products</u>
<u>Manufacture of lumber and wood products, except furniture</u>
Manufacture of furniture and fixtures
<u>Manufacture of pulp, paper and paper products</u>
Printing and allied industries
<u>Manufacture of chemical and allied products</u>
Manufacture of petroleum and coal products
Manufacture of plastic products, except otherwise classified
Manufacture of rubber products
Manufacture of leather tanning, leather products and fur skins
<u>Manufacture of ceramic, stone and clay products</u>
Manufacture of iron and steel
Manufacture of non-ferrous metals and products
Manufacture of fabricated metal products
<u>Manufacture of general-purpose machinery</u>
<u>Manufacture of production machinery</u>
<u>Manufacture of business oriented machinery</u>
Electronic parts, devices and electronic circuits
Manufacture of electrical machinery, equipment and supplies
Manufacture of information and communication electronics equipment
Manufacture of transportation equipment
Miscellaneous manufacturing industries
Electricity, gas, heat supply and water
Information and communications
Communications
Broadcasting
Information services
Internet based services
Video picture, sound information, character information production and distribution
<u>Transport and postal activities</u>
Railway transport
Road passenger transport
Road freight transport
Water transport
Air transport
Warehousing
Services incidental to transport
<u>Postal activities, including mail delivery</u>

Classification
Non-agricultural industries (Continued)
Wholesale and retail trade
Wholesale trade
Retail trade, general merchandise
Retail trade (dry goods, apparel and apparel accessories)
<u>Retail trade (food and beverage)</u>
<u>Retail trade (machinery and equipment)</u>
Miscellaneous retail trade
Finance and insurance
Real estate and goods rental and leasing
Real estate
Goods rental and leasing
<u>Scientific research, professional and technical services</u>
Scientific and development research institutes
Professional services, N.E.C.
Advertising
<u>Technical services, N.E.C.</u>
<u>Accommodations, eating and drinking services</u>
Accommodations
<u>Eating and drinking places</u>
<u>Food take out and delivery services</u>
<u>Living-related and personal services and amusement services</u>
Laundry, beauty and bath services
Miscellaneous living-related and personal services
Services for amusement and hobbies
Education, learning support
School education
Miscellaneous education, learning support
Medical, health care and welfare
Medical and other health services
Public health and hygiene
Social insurance and social welfare
Compound services
Postal services
Cooperative associations, N.E.C.
Services, N.E.C.
Waste disposal business
Automobile maintenance services
Machine, etc. repair services, except otherwise classified
<u>Employment and worker dispatching services</u>
Miscellaneous business services
Political, business and cultural organizations
Religion
Miscellaneous services
Foreign governments and international agencies in Japan
<u>Government, except elsewhere classified</u>
National government services
Local government services
Industries unable to classify

(Notes)

Shaded: contents are different from the current classification

Underlined: changed the name of the classification