

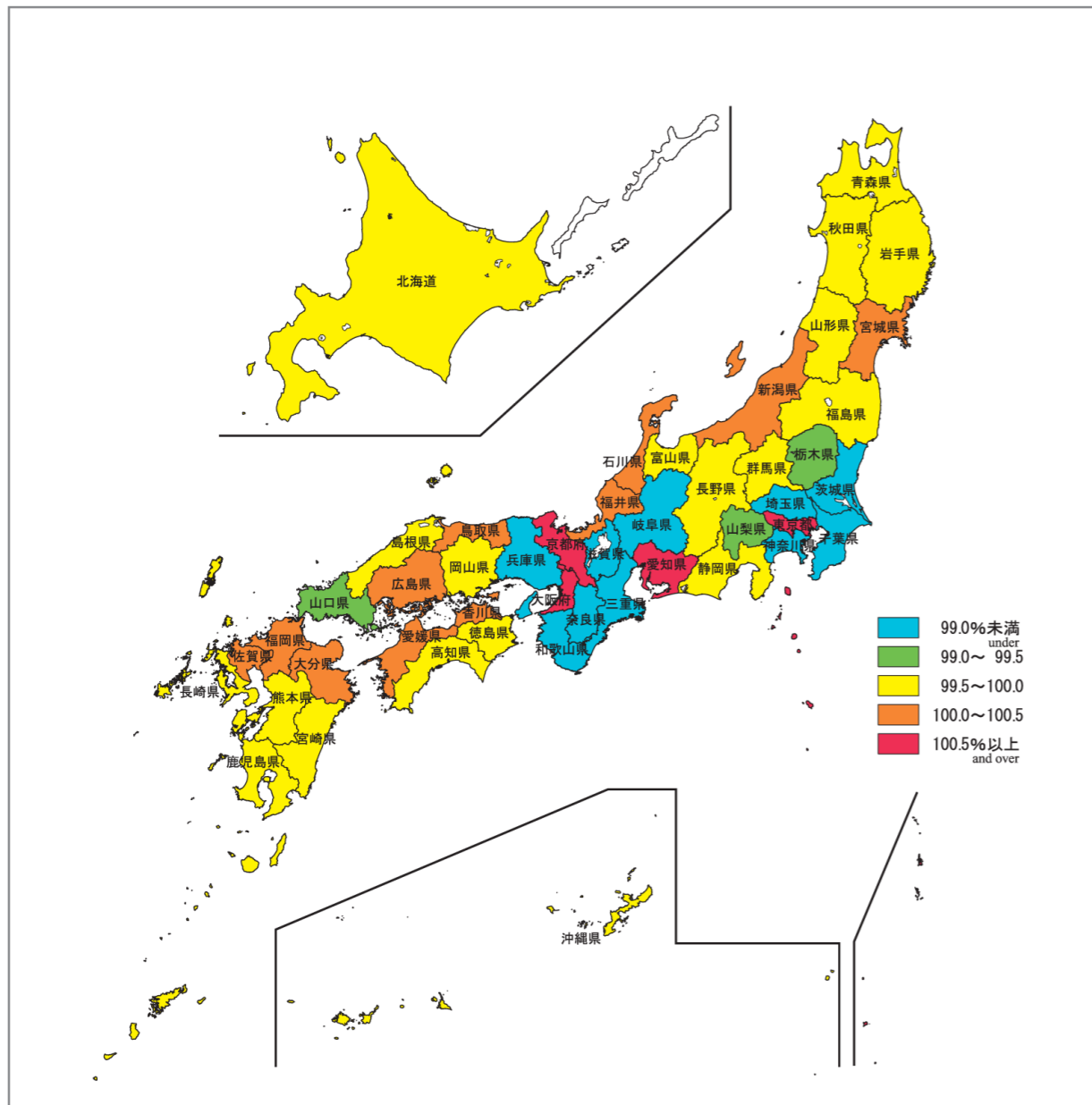
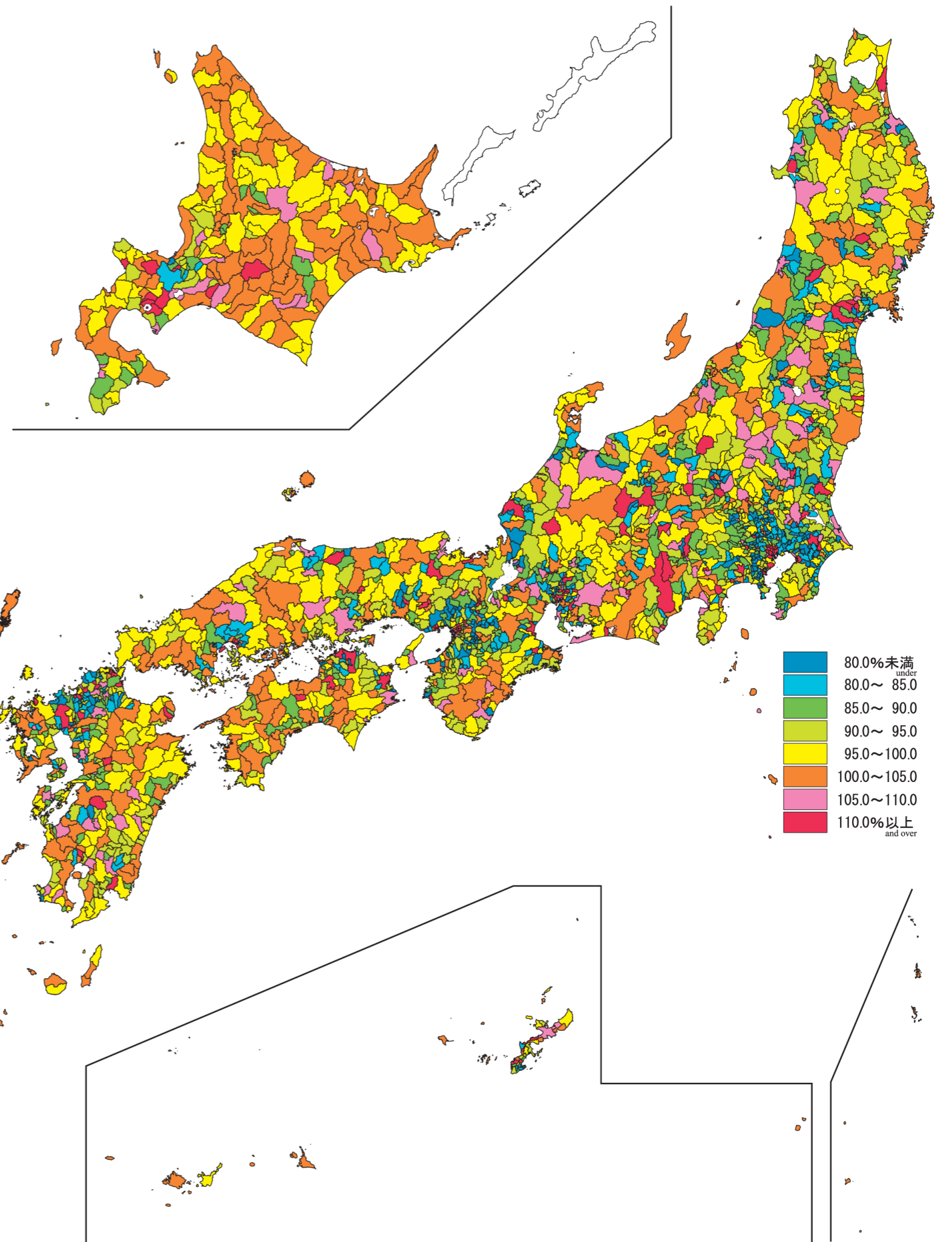
日本統計地図 Statistical Maps of Japan

平成17年国勢調査
2005 POPULATION CENSUS OF JAPAN

都道府県・市区町村別 昼夜間人口比率

$$\text{昼夜間人口比率} = \frac{\text{昼間人口(従業地・通学地人口)}}{\text{夜間人口(常住地人口)}} \times 100$$

Ratio of Daytime and Nighttime Population
by Prefecture and by Shi,Ku,Machi and Mura



- 80.0%未満
under
- 80.0~ 85.0
- 85.0~ 90.0
- 90.0~ 95.0
- 95.0~100.0
- 100.0~105.0
- 105.0~110.0
- 110.0%以上
and over

- 99.0%未満
under
- 99.0~ 99.5
- 99.5~100.0
- 100.0~100.5
- 100.5%以上
and over