

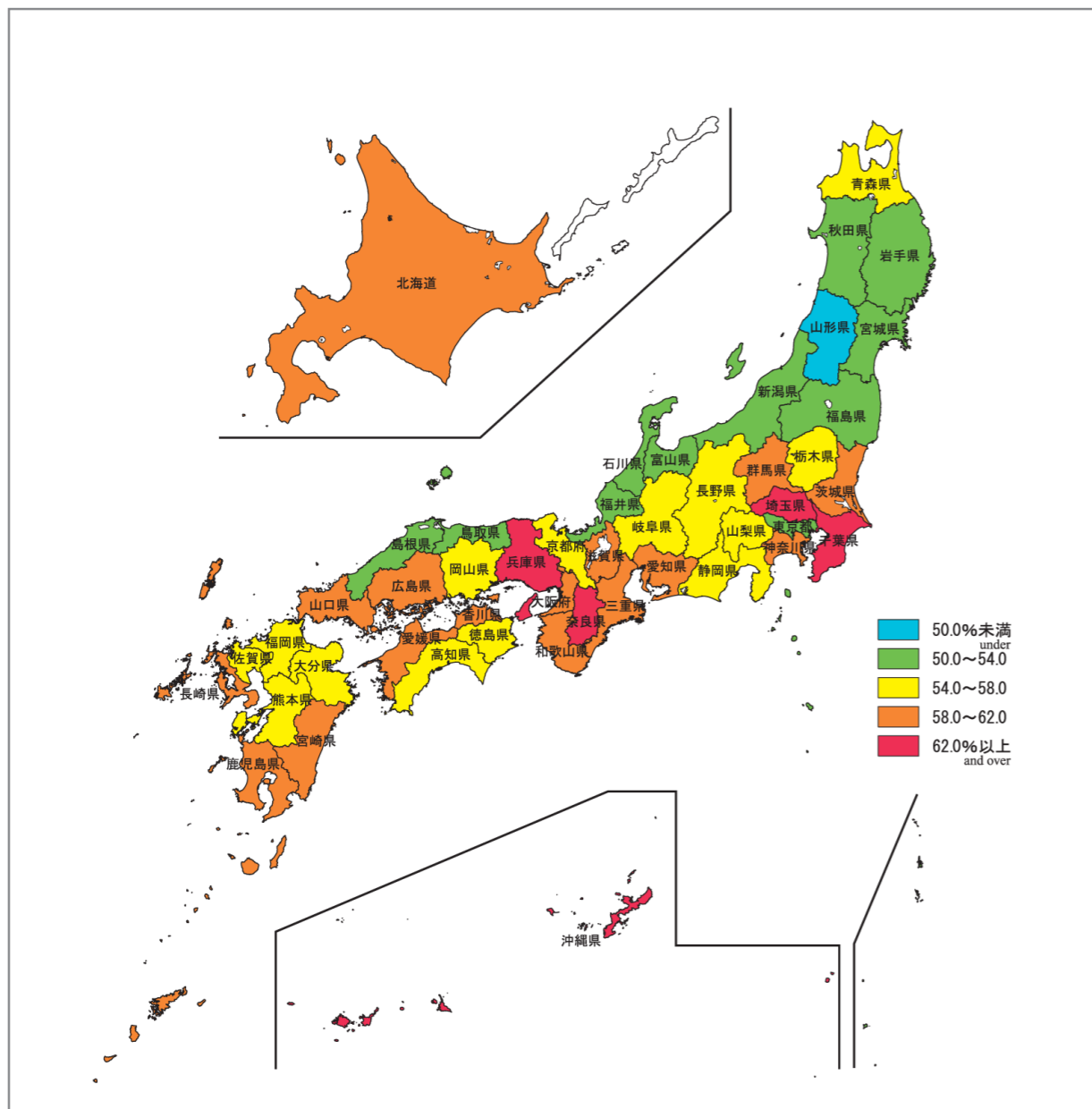
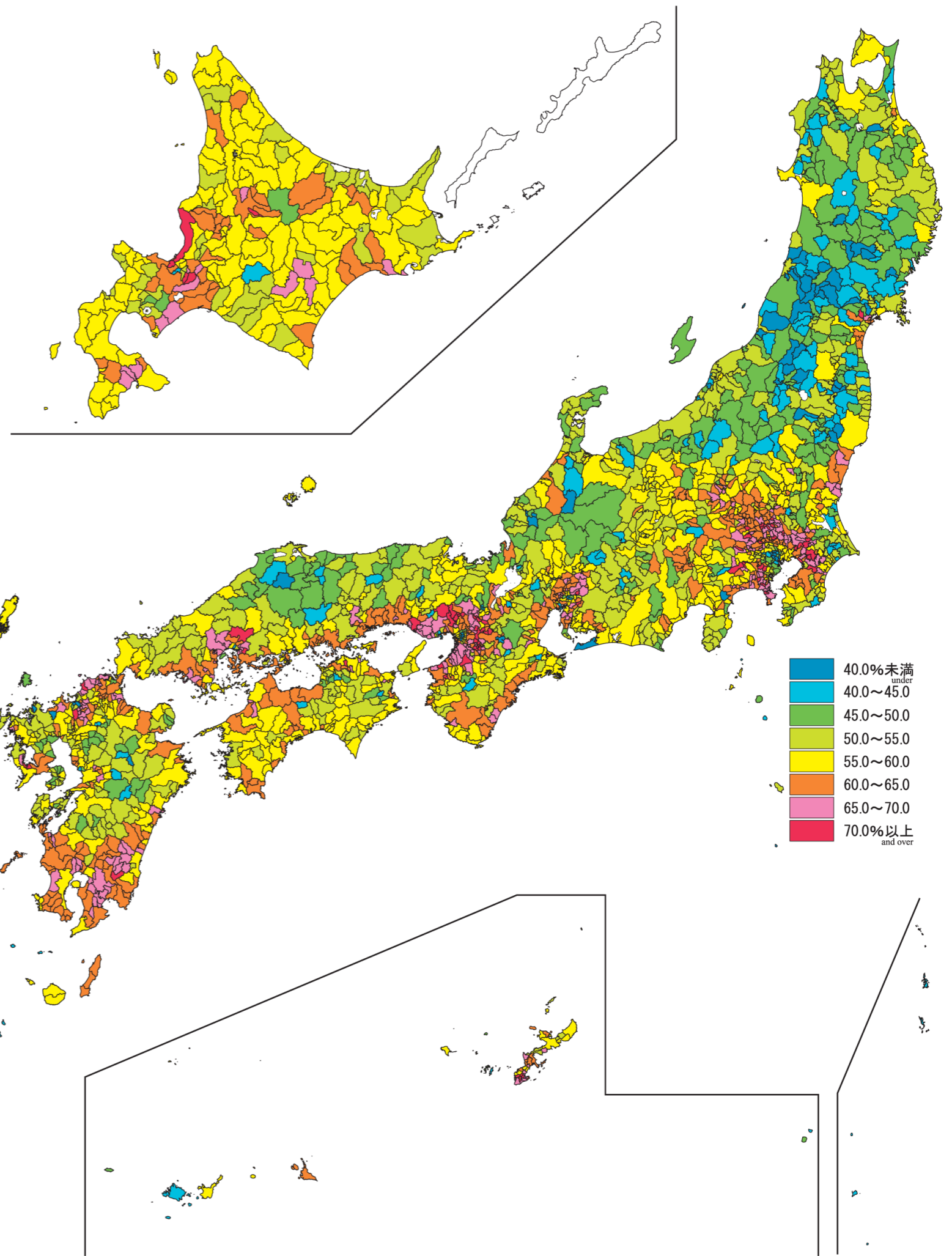
日本統計地図 Statistical Maps of Japan

平成17年国勢調査
2005 POPULATION CENSUS OF JAPAN

都道府県・市区町村別 核家族世帯の割合

$$\text{核家族世帯の割合} = \frac{\text{核家族世帯数}}{\text{一般世帯数}} \times 100$$

Proportion of Family Nuclei
by Prefecture and by Shi,Ku,Machi and Mura



- 40.0%未満
under
- 40.0~45.0
- 45.0~50.0
- 50.0~55.0
- 55.0~60.0
- 60.0~65.0
- 65.0~70.0
- 70.0%以上
and over

- 50.0%未満
under
- 50.0~54.0
- 54.0~58.0
- 58.0~62.0
- 62.0%以上
and over