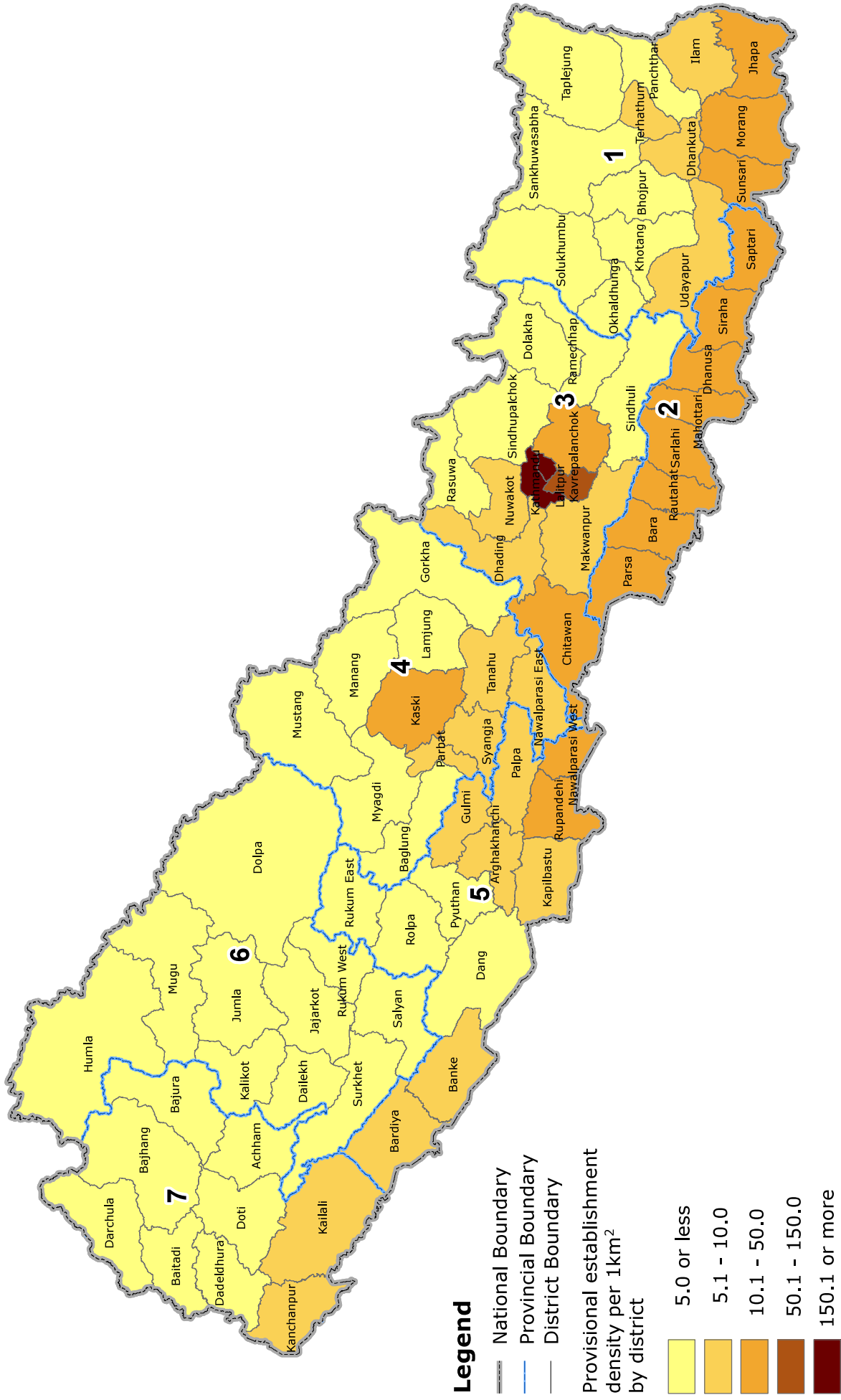


SECTION III:

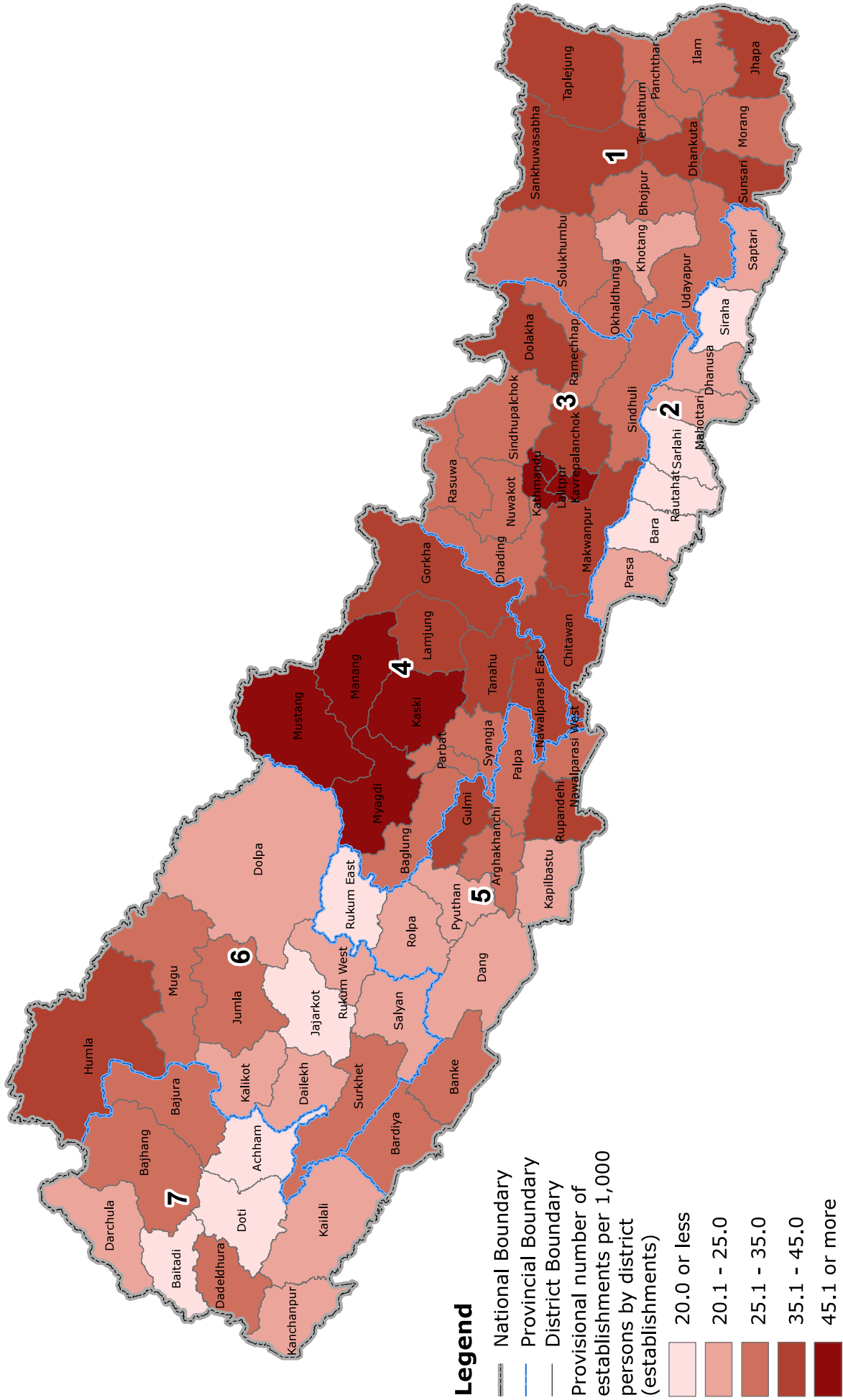
Maps

- * The preliminary results are sorted out based on the new administrative areas as of 14 April 2018.
- ** The preliminary results were aggregated from the enumerator's control forms (summary sheets) which were filled in by enumerators and checked by supervisors. Therefore, the preliminary results might slightly be different from the final results which are based on Form B.

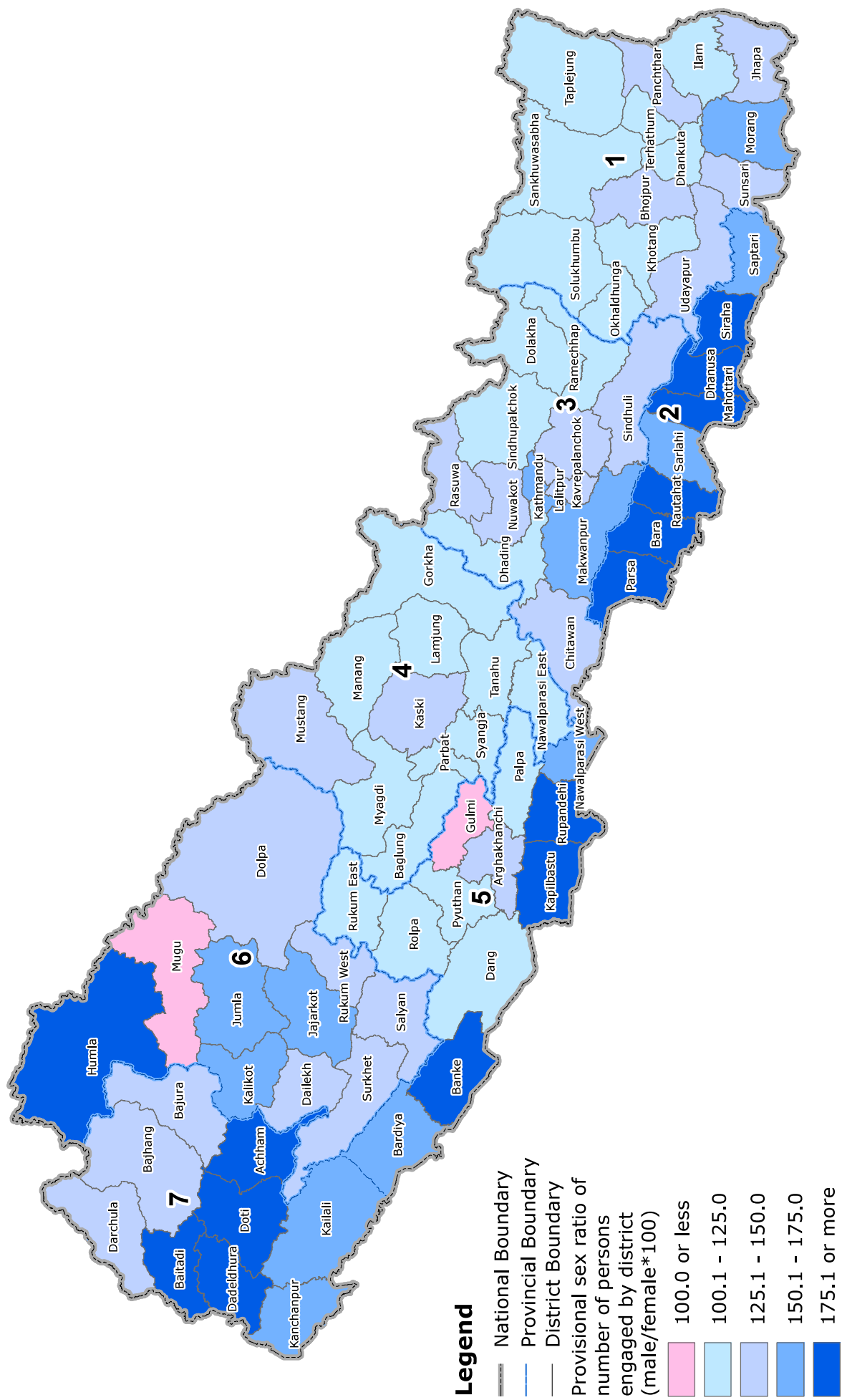
Map 2. Provisional Establishment Density by District in 2018



Map 3-1. Provisional Number of Establishments per 1,000 Persons by District in 2018



Map 5-1. Provisional Sex Ratio of Number of Persons Engaged by District in 2018



Map 5-2. Provisional Number of Persons Engaged per Establishment by District in 2018

