

Local Issues of Nepal Economic Census 2018 in Kaski Statistics Office, CBS

By Jagu L. Basyal
Director
SO, Kaski
11/12/2017

Outline of Discussion

- Statistics Office Kaski
- Development of Statistics Office Kaski
- Local Issues for Economic Census

Statistics Office Kaski

Office Established in 1993.

Total Staffs -11

Chief of office as a director -1

Statistical officer -1

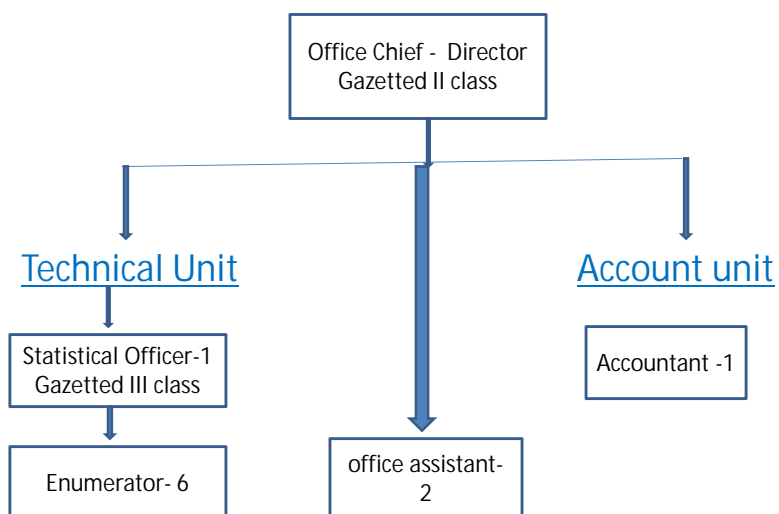
Accountant - 1

Enumerator - 6

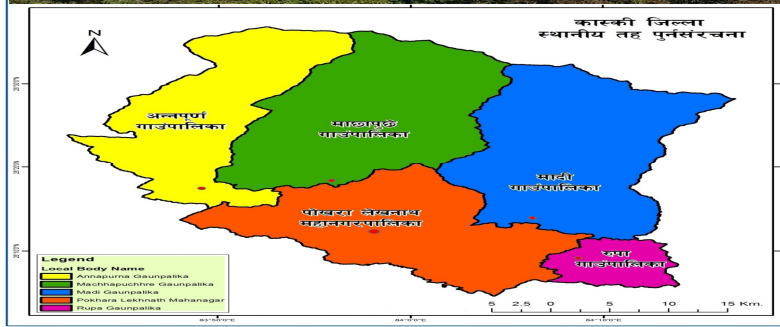
Office assistant -2

Statistics office Kaski covers 2 districts Kaski and Tanahun.

Organization Chart



Kaski District



Tanahun District



Main Functions of SO Kaski

- To conduct population, agriculture and manufacturing establishment censuses and different regular and ad-hoc surveys.
- To collect data of regular annual programs provided from CBS.
- To enter data and to edit raw data by computer software and submit reports to CBS.
- To provide necessary statistics for public services.
- To co-ordinate statistical activities at local level.
- To publish local level administrative data from secondary source and provide publication for data users.

Annual programs this fiscal year (2074/075)

- National Account : data collection and data entry
A) Annually B) Quarterly (from two districts)
- Price collection of construction materials and data entry
- Quarterly
- Price collection of agriculture products and data entry
- Quarterly
- Price collection of manufacturing production and producer's price and data entry - Quarterly (from two districts)
- To prepare leaflets of Tanahun District from secondary source and to distribute them.
- Statistics for public services.

Annual programs this fiscal year (2074/075)

- To prepare local body profiles of Tanahun District from secondary source to distribute them.
- Environment Statistics : Data collection of waste disposal from municipalities. (from two districts)
- Cartography work for enumeration area mapping and to digitize their collected data. (three municipalities)
- Census Info/ Nepal Info /SPSS training are held according to user demand
- Preparation for the progress report of the last fiscal year 2073/074
- Other programs that are authorized from CBS.

Some challenging

- Data gap between demand and supply
- Limited resources to regulate new programs
- Implication of survey clearance system is not started
- Statistics is in low priority in government's Policy
- Lack of statistics policy at local level
- Statistics act is very old (not updated)
- Poor co-ordination among data producers, suppliers and users.
- Public awareness is very low and it is difficult to collect reliable data.

Some challenging

- Lack of technical expertise at local level
- To collect economic data is very difficult because some enterprises are managing without register and account book. So, most of small enterprises provide oral data only for us.
- Office covers two districts. Most of the field areas are remote hill.
- Very low use of CBS's data at local level policy, planning, and monitoring process.
- Statistics awareness programs are not sufficient.

Some Opportunities

- Qualified manpower in office : Most of enumerators are master degree holders
- Office has own new building with good environment of working.
- CBS has provided new vehicle for SO Kaski.
- Government of Nepal is using CBS's expertise and data for local body's reform
- The first ever Economic Census will be conducted in 2018 by technical support of JICA Expert.

Development of SO

- Establish Provincial Statistics Office in Pokhara
- Establish provincial level training centre
- Equipment needed for training room :
(ceiling-mounted projector, ceiling-mounted speaker, CD/DVD/VCR player, wireless microphone system, integrated amplifier, recessed electricity operated screen, etc.)
- Annual programs by bottom-up approach
- Internal computer networking in office
- PC tablets are necessary for each enumerator to collect data

Development of SO

- Data user programs for local policy makers
- Awareness programs for users and data providers
- Strong coordination among data producers, data users, and data providers
- Website for data users in SO
- SO Kaski should be mandated as the centre data server in Province level
- Different training packages are data analysis, tabulation, report writing, etc.

Review of EC2018 Pilot Survey

- Pilot E-census was conducted in two enumeration areas : Kaski and Tanahun Districts.
- Pilot Form B is designed more scientific way.
- Data was collected by both PC tablet and paper form.
- Very few respondents response information through e-Census.
- Pilot e-Census is making new environment in the district toward the main census in 2018.
- PAPI demands more PC tablets for data collection.

Local Issues for Economic Census

- Establish provincial level Economic Census Office in Pokhara.
- Building a separate team group for e-Census data collection for the province level.
- Provide PC tablets for collecting data from main markets (urban places).
- Redesign Form B based on public opinion
- Setting proper planning and time table for the Census
- Preparing EA maps for dense urban areas.

Local Issues for Economic census

- Maintain confidentiality for data providers during the Census.
- Use local public mass media like: FM radio, local television, and newspapers in local languages
- Select qualified enumerators
- Design systematic field operation schedule.
- Revisit or again call managers to incomplete questionnaires.
- Continue field supervision during the Census from the beginning.
- Sufficient incentive should be provided for enumerators during both data collection and data entry.

Local Issues for Economic census

- Preliminary data entry and data editing in Pokhara.
- Good relationship between SO and economic data users
- Coordination among different line agencies
- Data quality control management during both field operation and data entry.