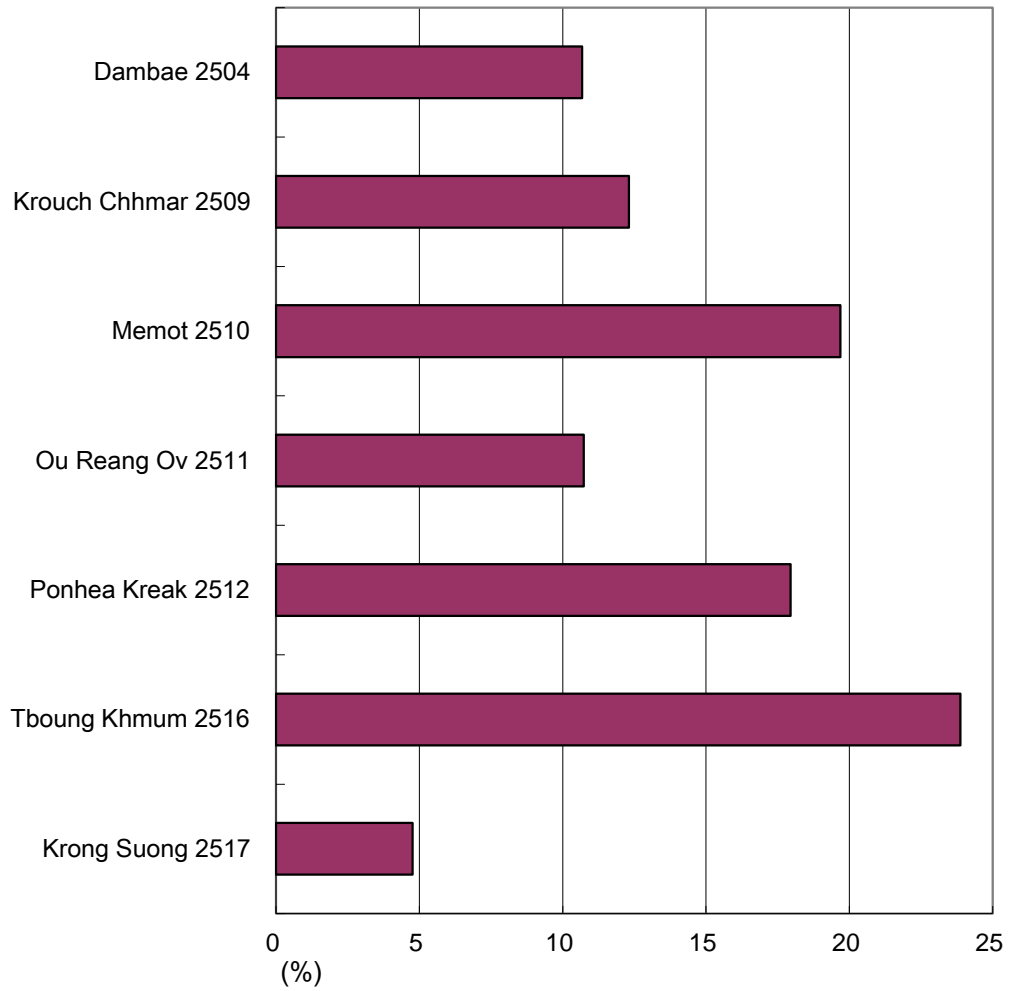
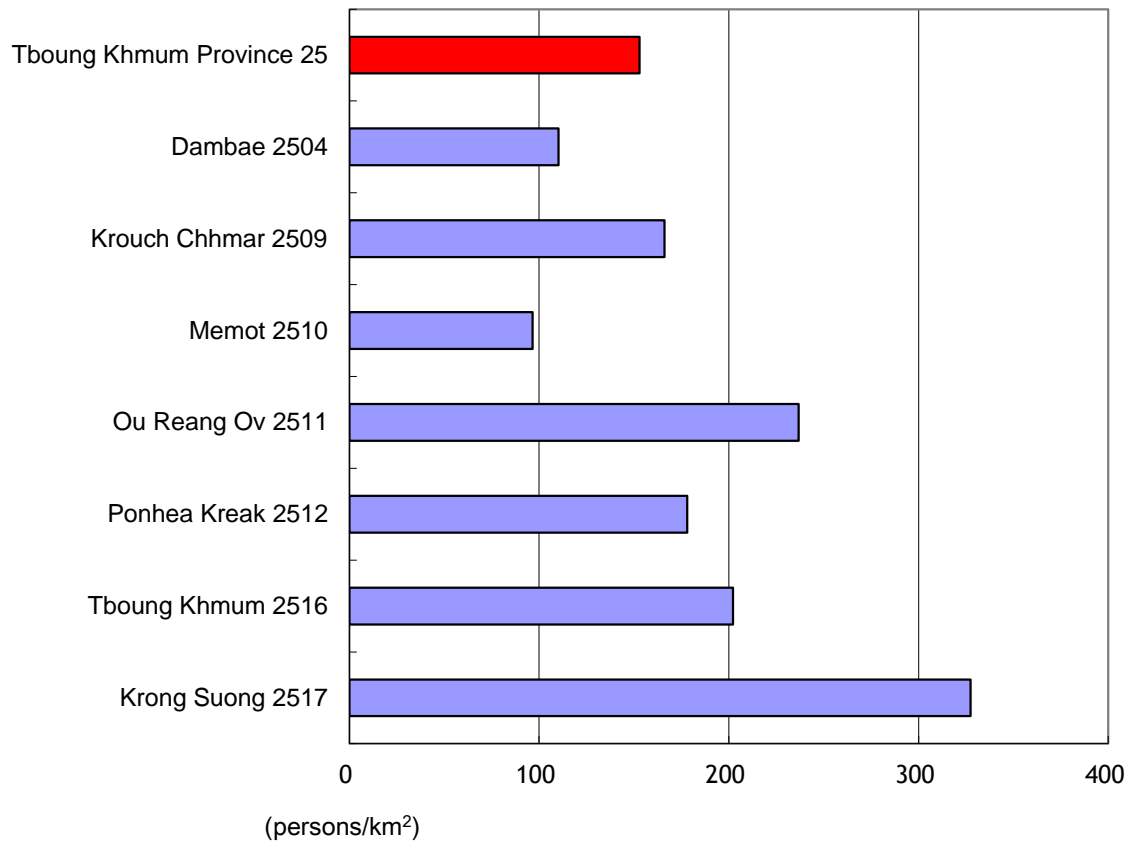


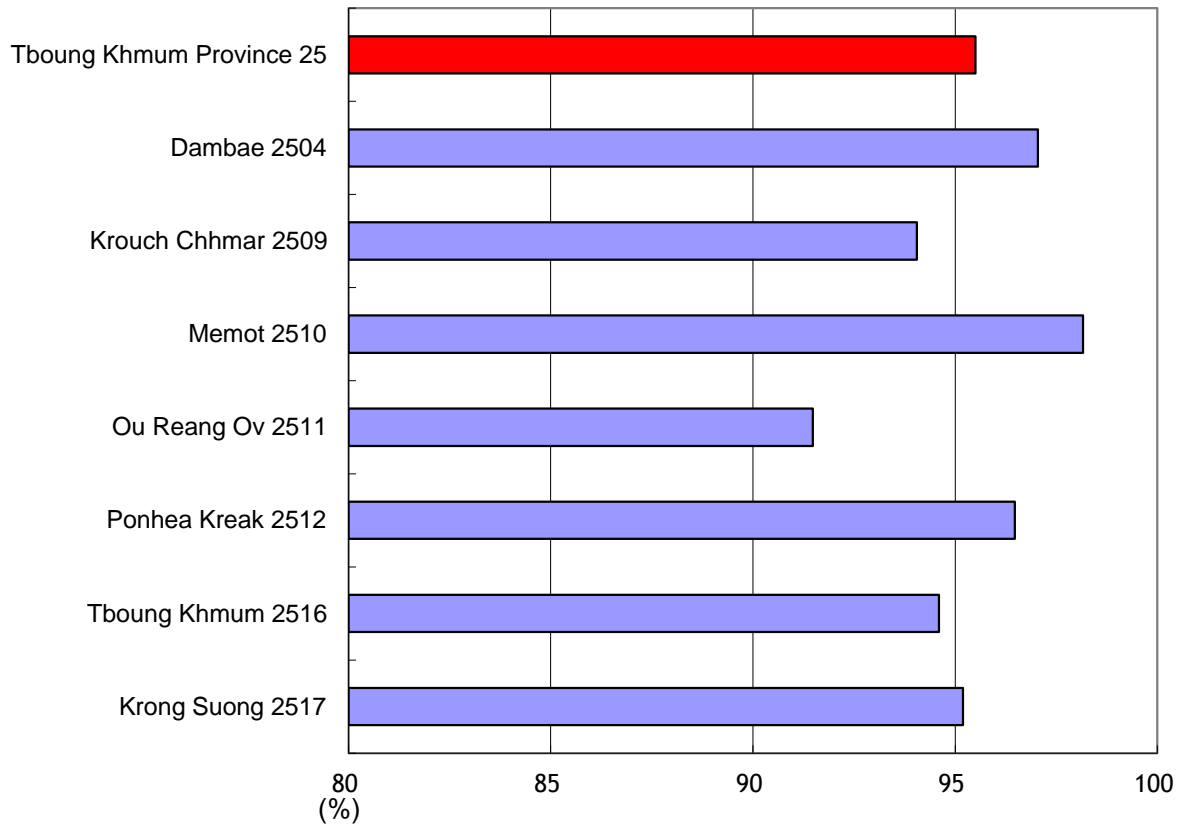
Graph 1. Percent to Total Population of Tboung Khmum Province by District (2008)



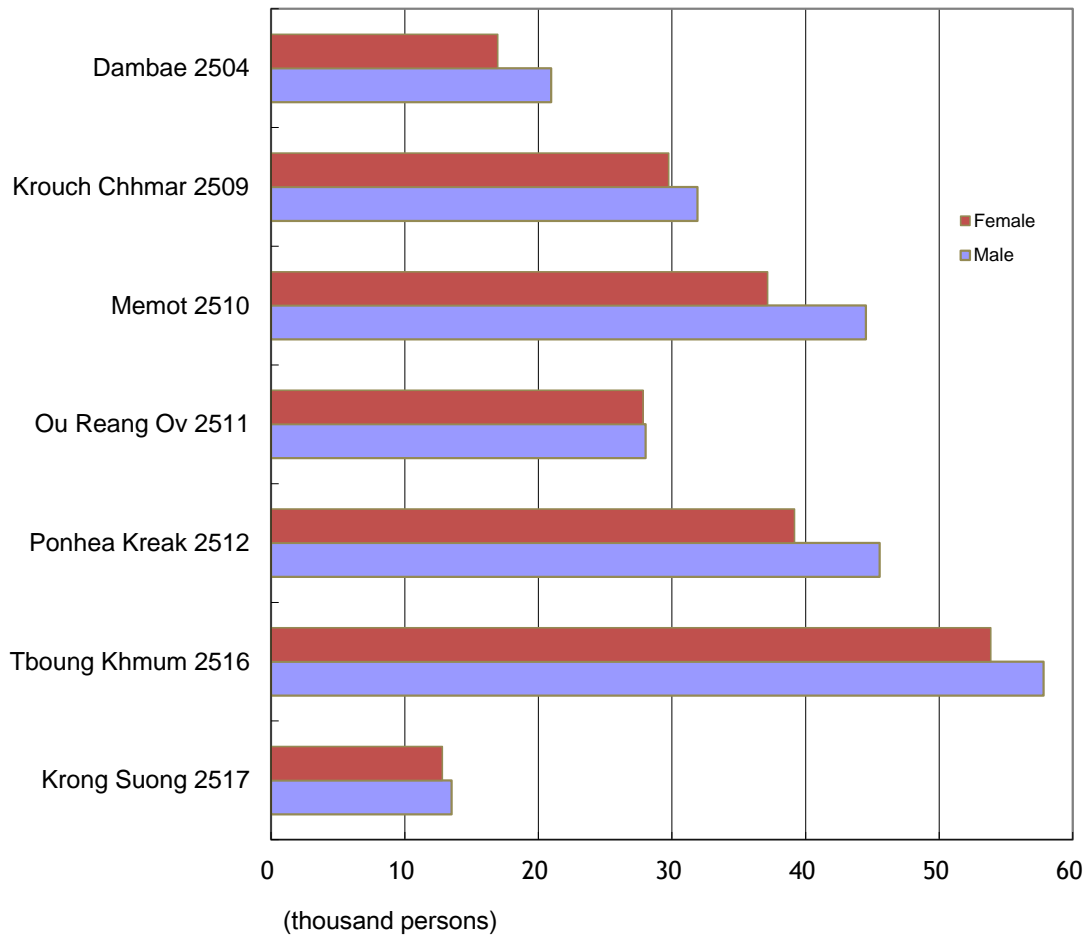
Graph 2. Population Density by District - Tboung Khmum Province (2008)



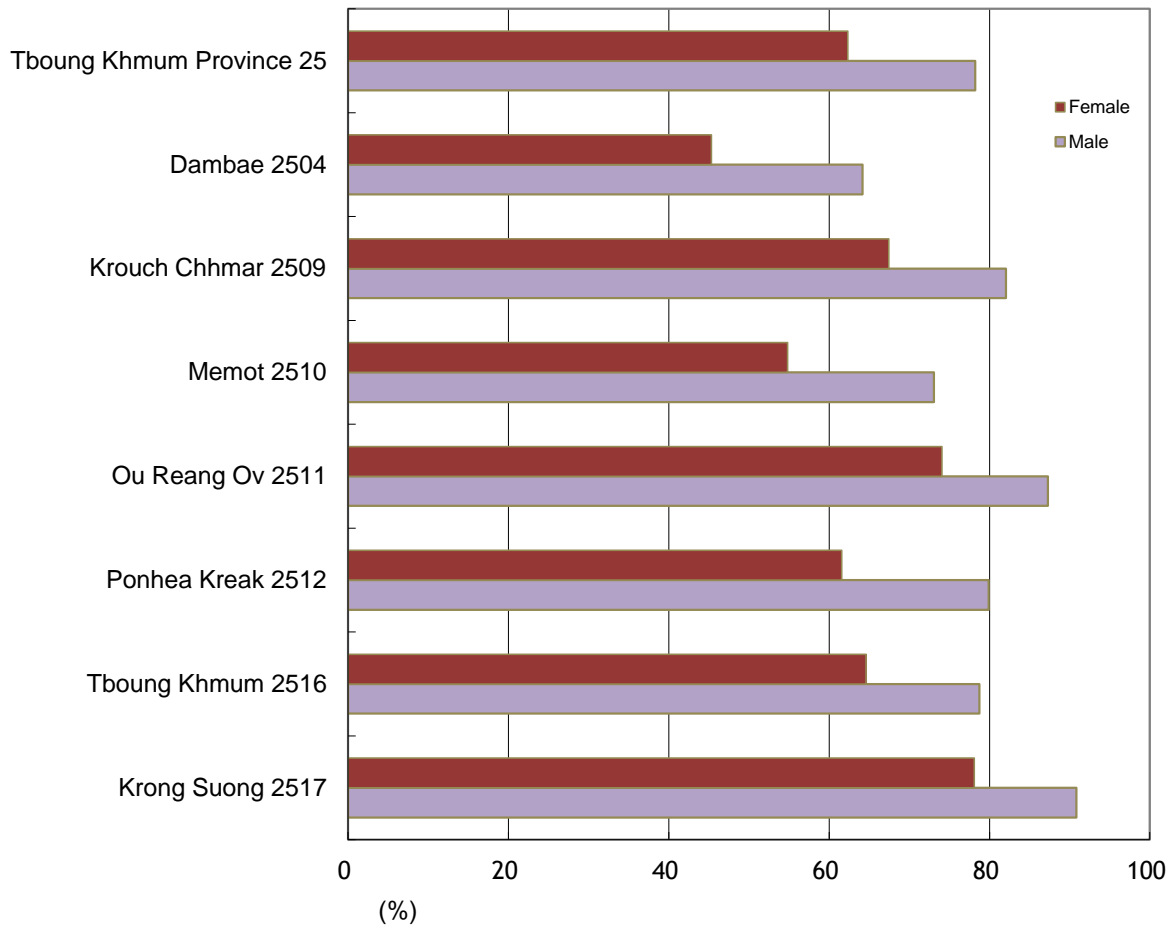
Graph 3. Sex Ratio by District - Tboung Khmum Province (2008)



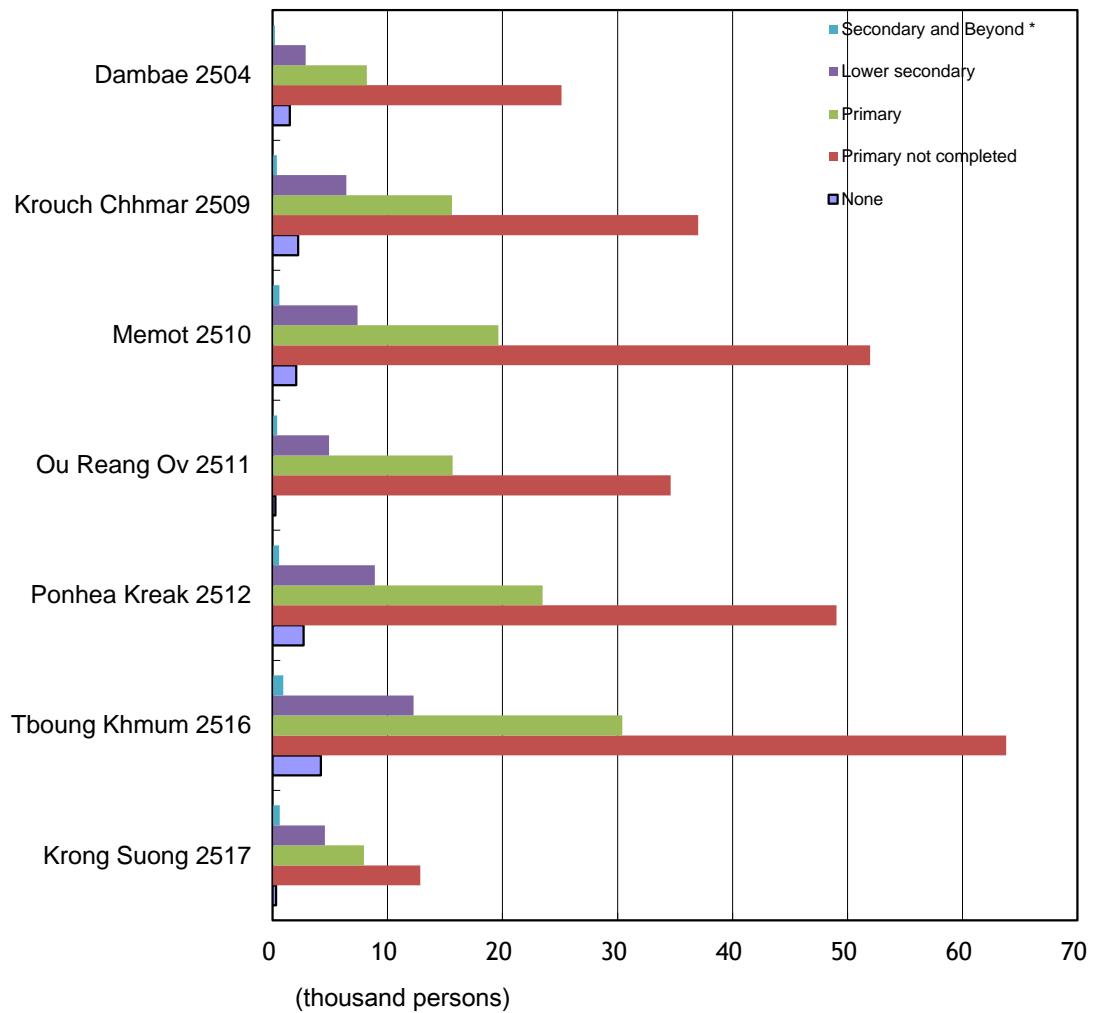
Graph 4. Number of Literate Persons aged 7 Years and over by Sex and District - Tboung Khmum Province (2008)



Graph 5. Adult Literacy Rate by Sex and District - Tboung Khmum Province (2008)

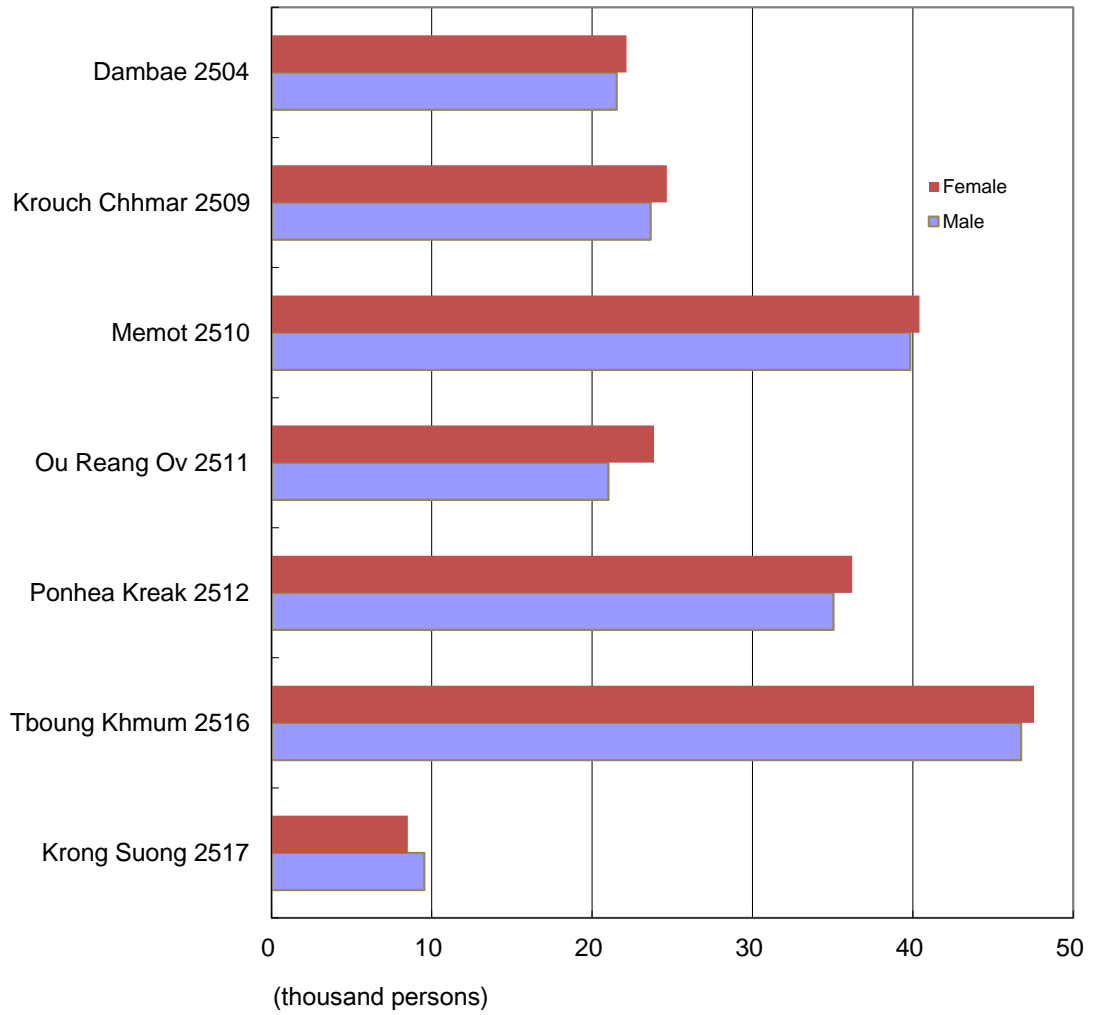


Graph 6. Number of Literate Persons aged 7 years and over by Level of Education and District - Tboung Khmum Province (2008)

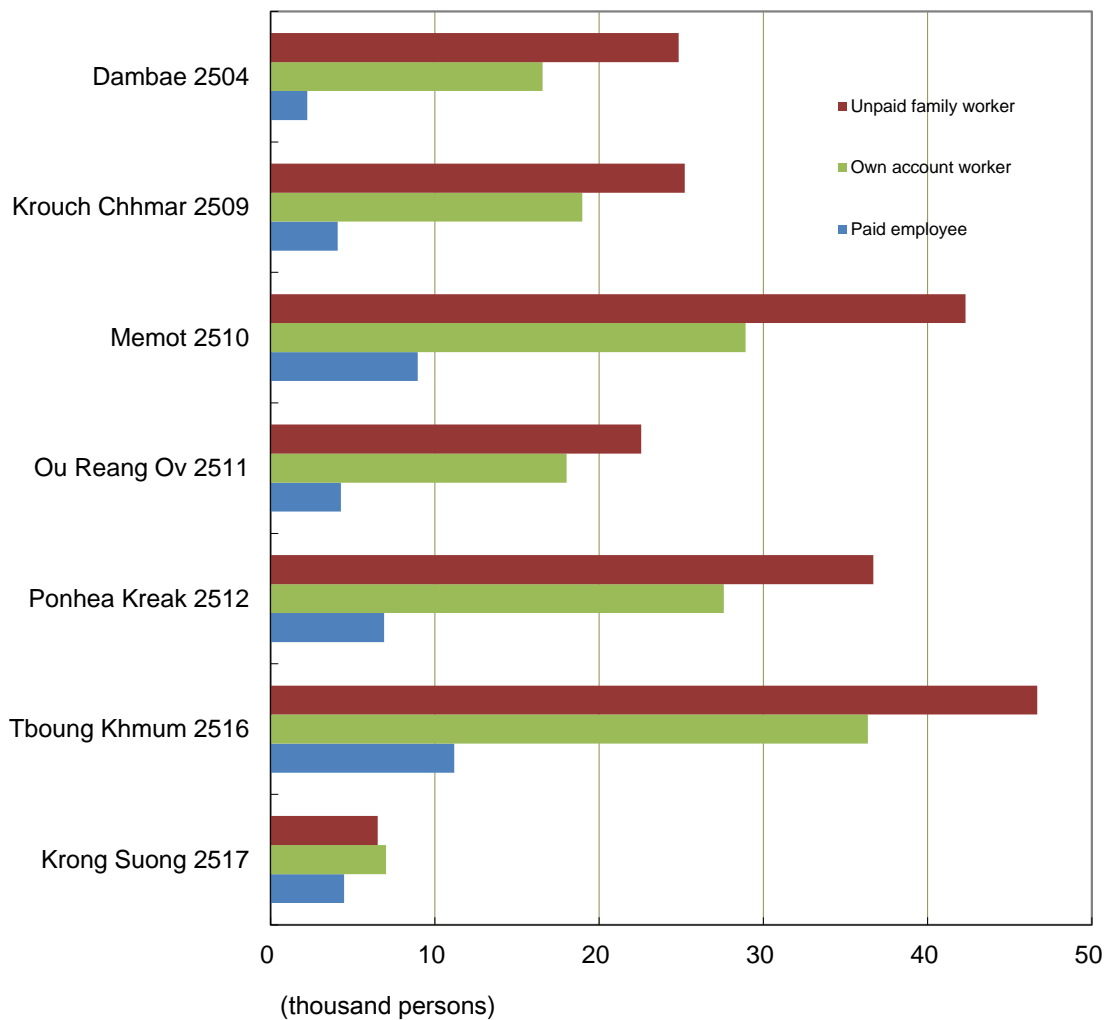


* Excluding educational level "Others" and "Not stated".

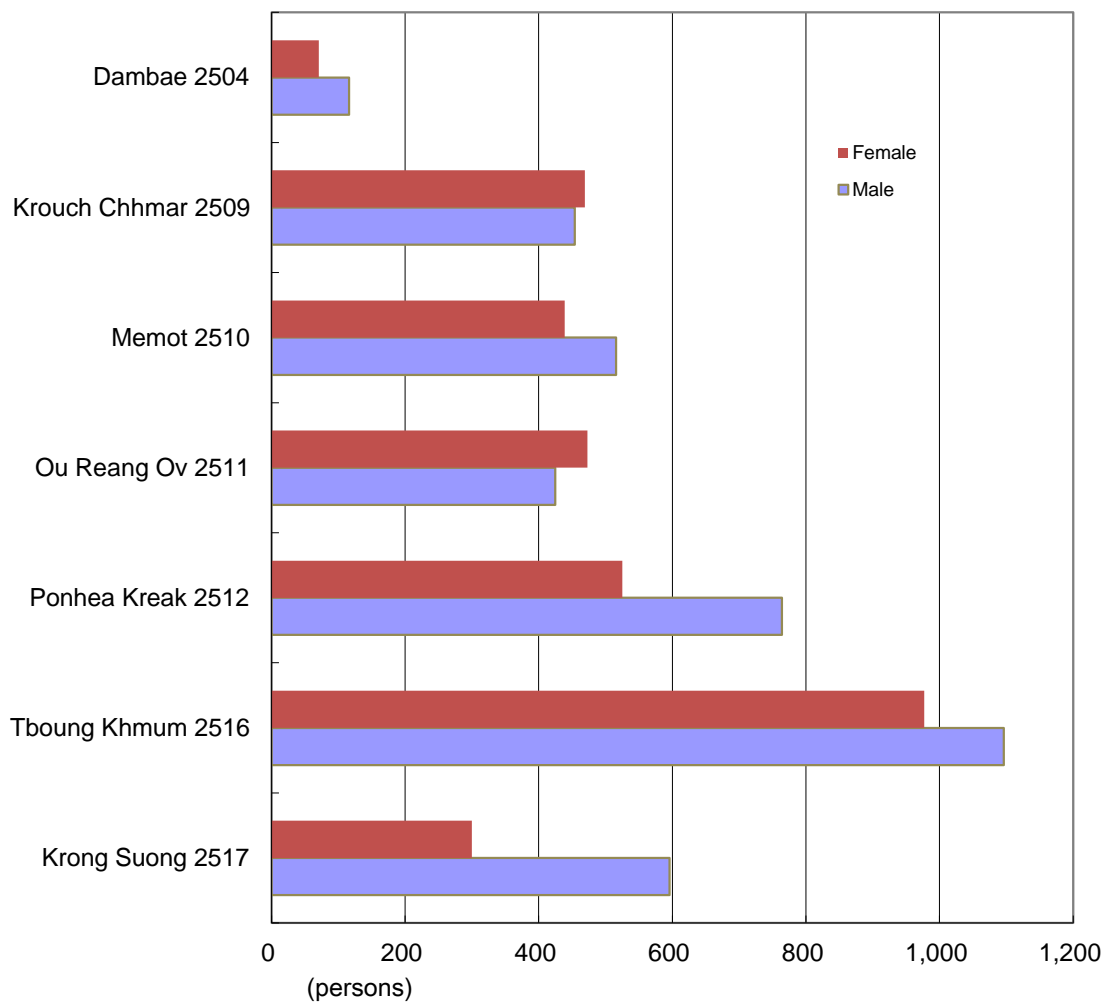
Graph 7. Number of Employed Persons aged 10 years and over by Sex and District - Tboung Khmum Province (2008)



Graph 8. Number of Employed Persons aged 10 years and over by Employment Status and District - Tboung Khmum Province (2008)

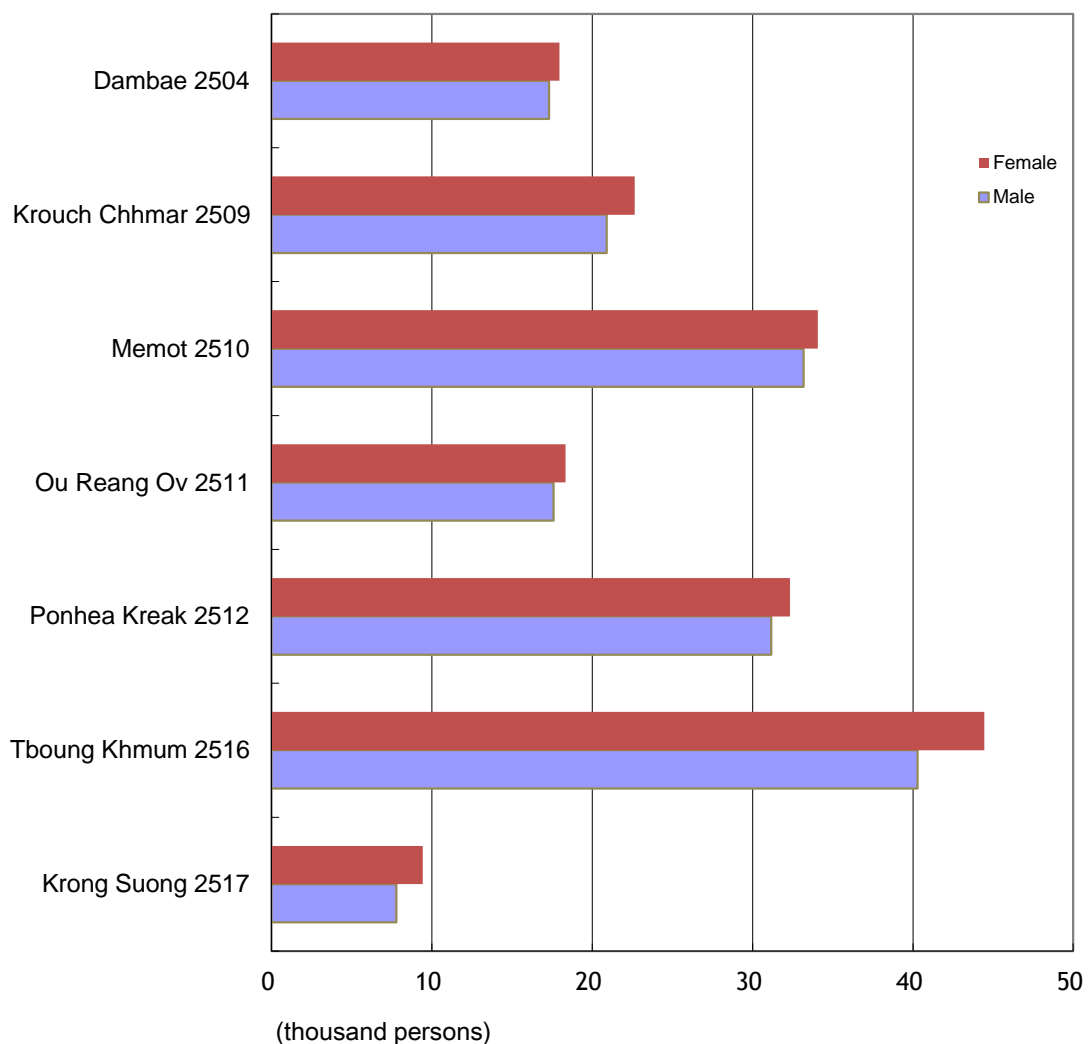


Graph 9. Number of Employed Persons aged 10 years and over in Manufacturing Sector of ISIC by Sex and District - Tboung Khmum Province (2008)



* ISIC stands for International Standard Industrial Classification.

Graph 10. Number of Not Economically Active Persons by Sex and District - Tboung Khmum Province (2008)



* Not economically active persons include home makers, students, dependents, rent-receivers, retired persons or other income recipients, and others.