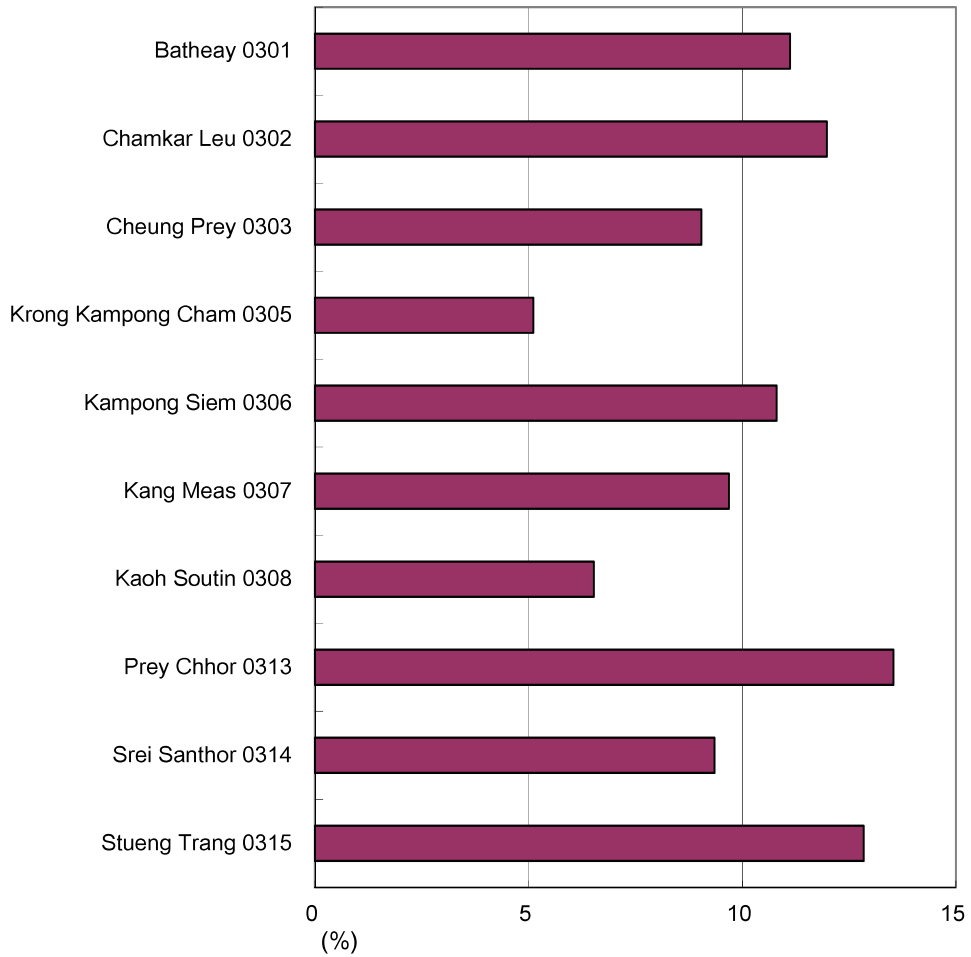
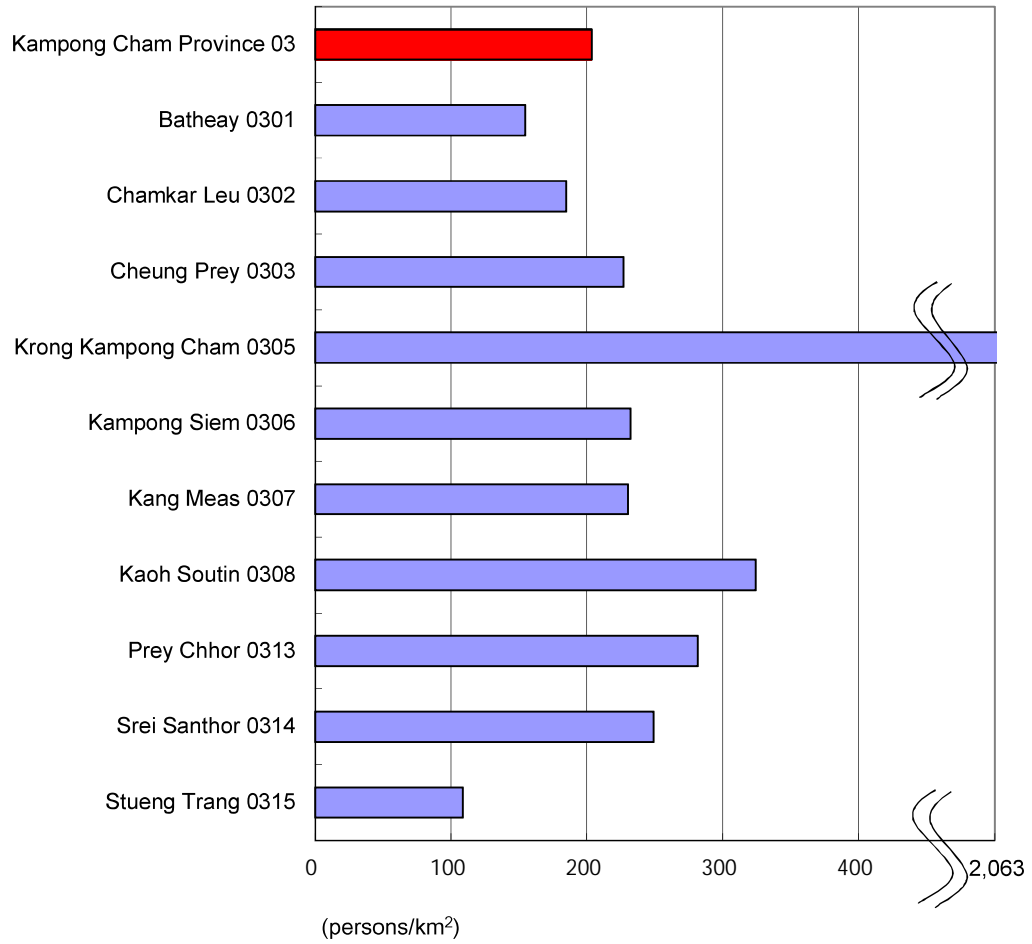


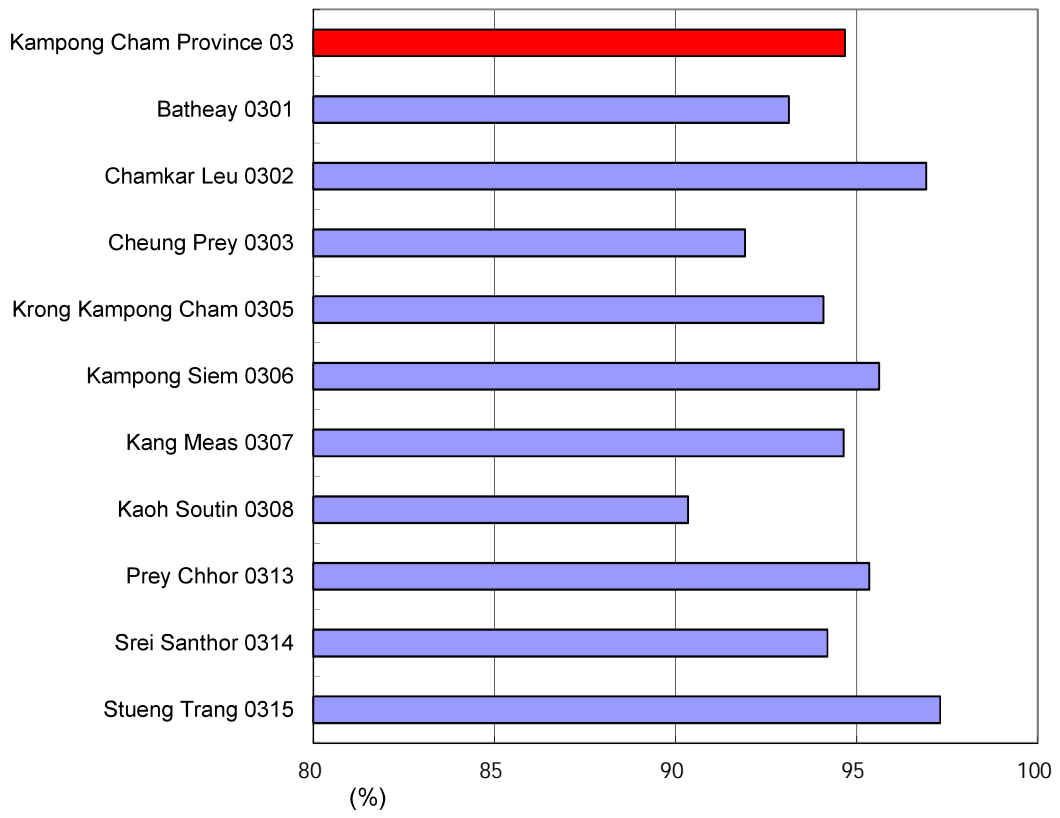
**Graph 1. Percent to Total Population of Kampong Cham by District (2008)**



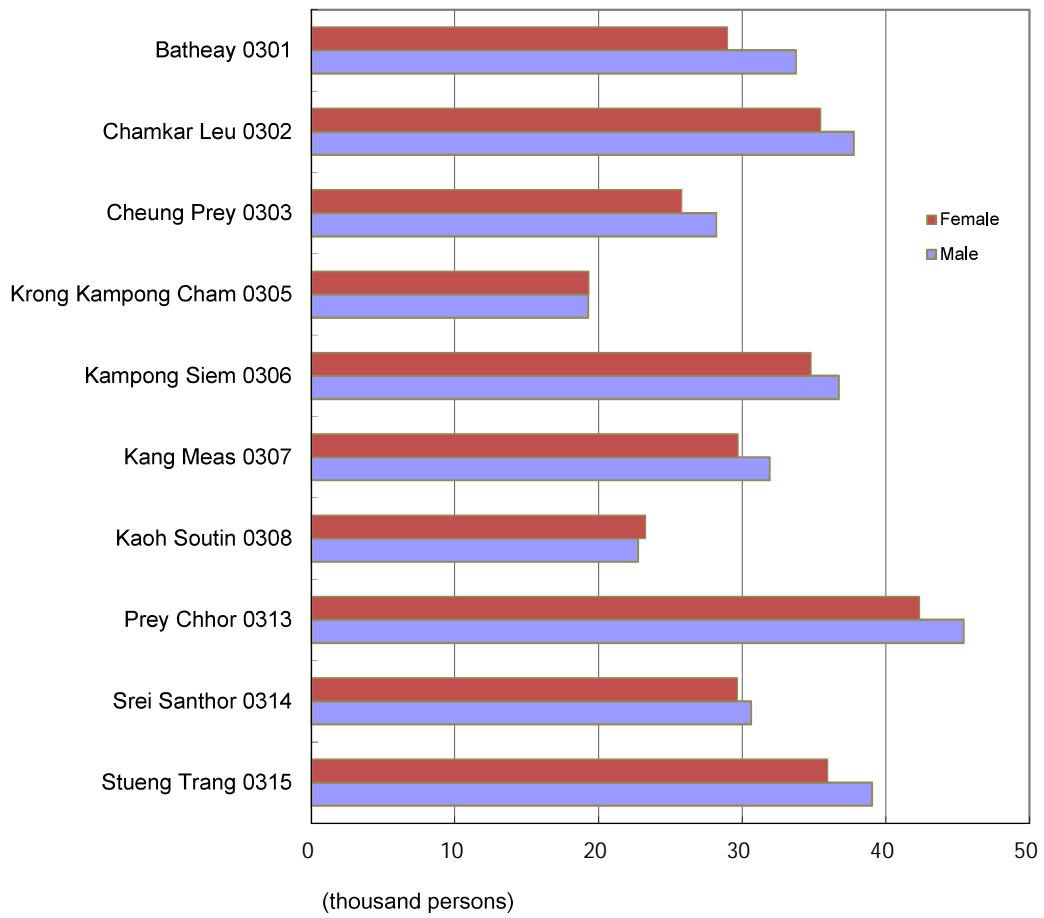
**Graph 2. Population Density by District - Kampong Cham (2008)**



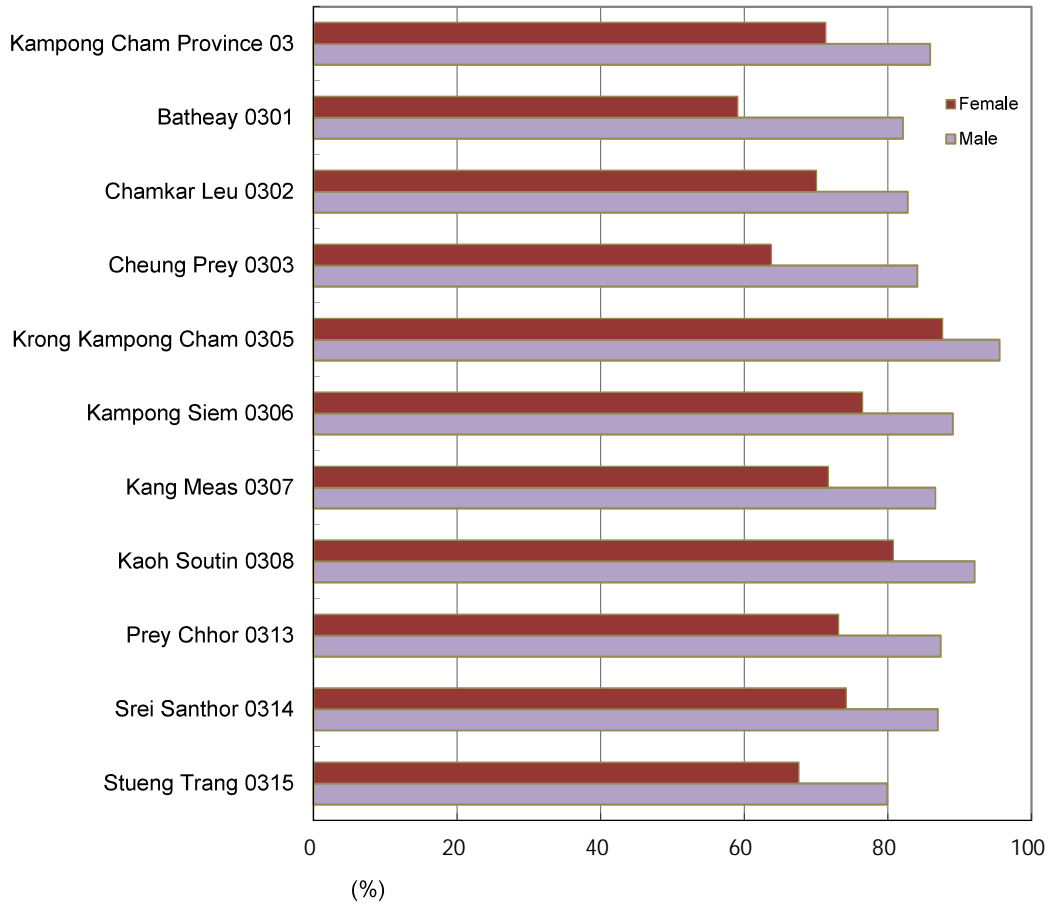
**Graph 3. Sex Ratio by District - Kampong Cham (2008)**



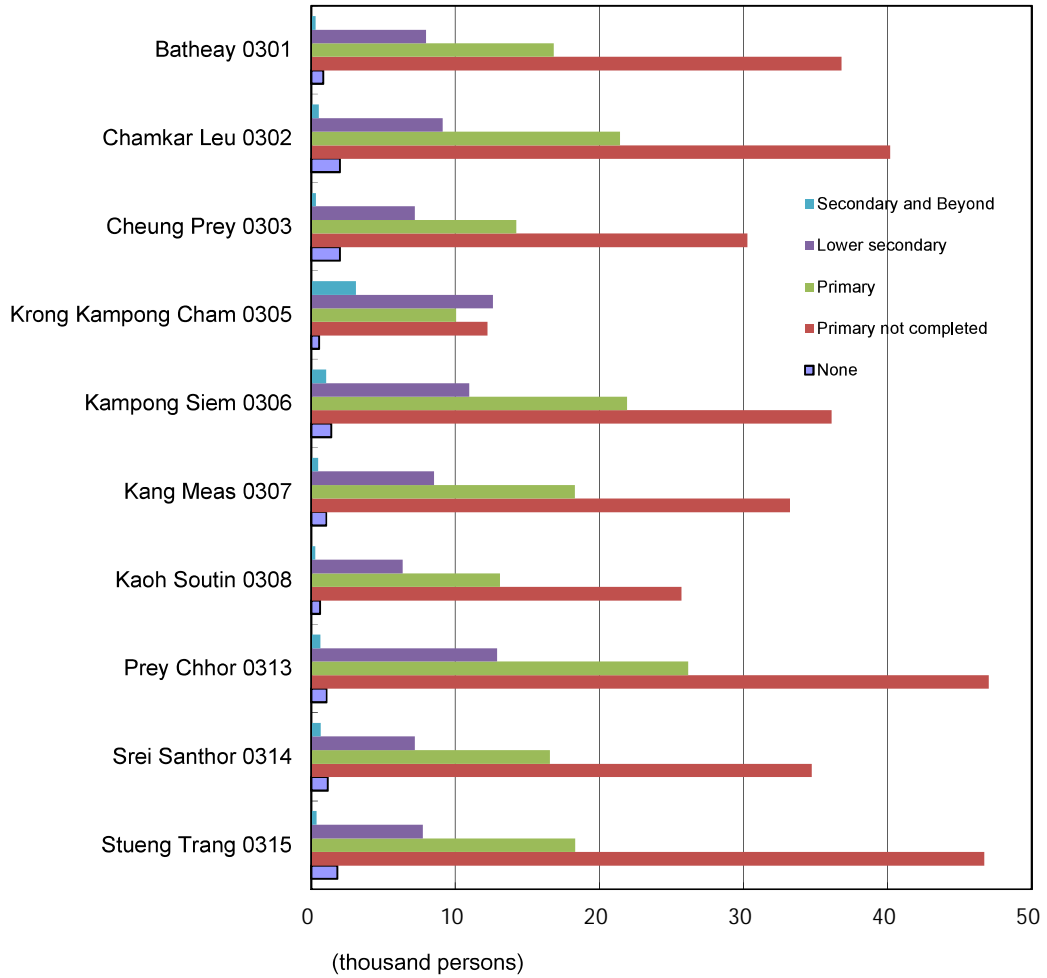
**Graph 4. Number of Literate Persons aged 7 Years and over by Sex and District - Kampong Cham (2008)**



**Graph 5. Adult Literacy Rate by Sex and District - Kampong Cham (2008)**

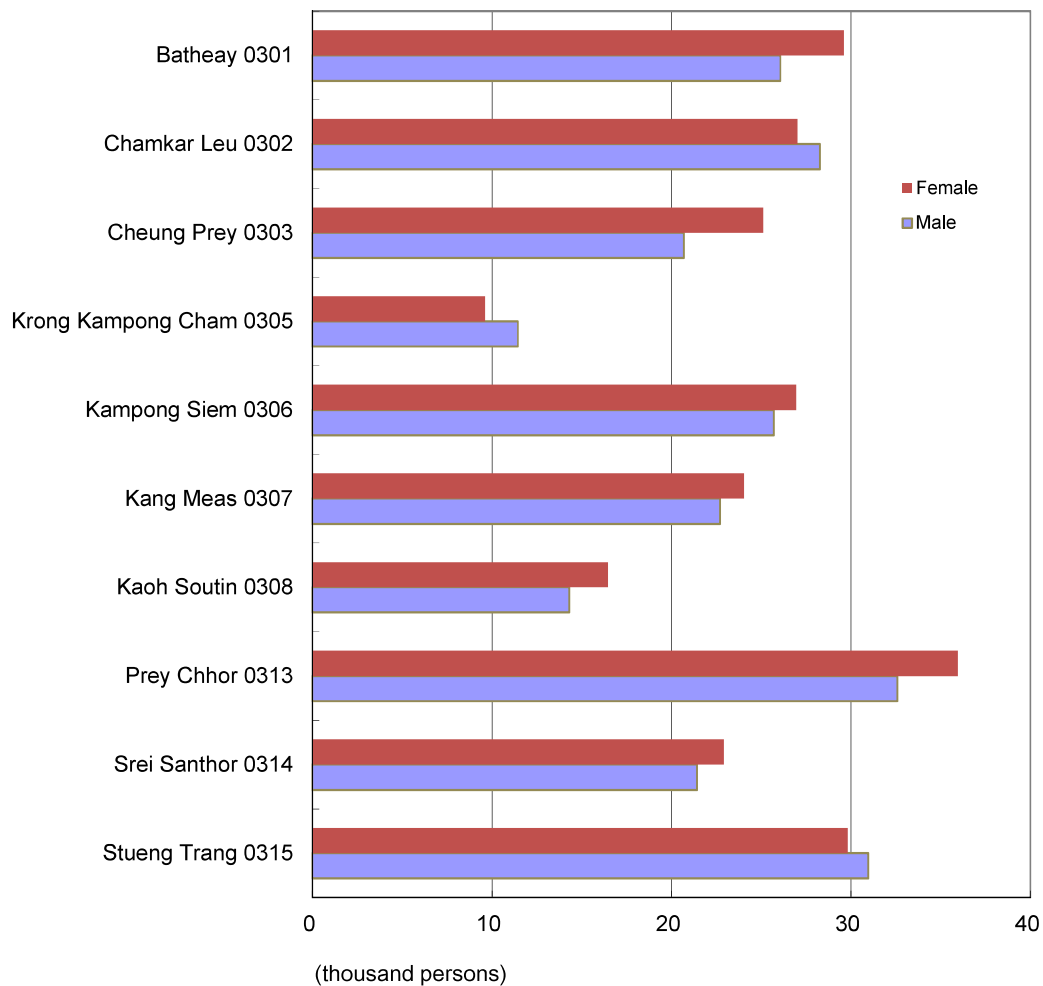


**Graph 6. Number of Literate Persons aged 7 years and over by Level of Education and District - Kampong Cham (2008)**

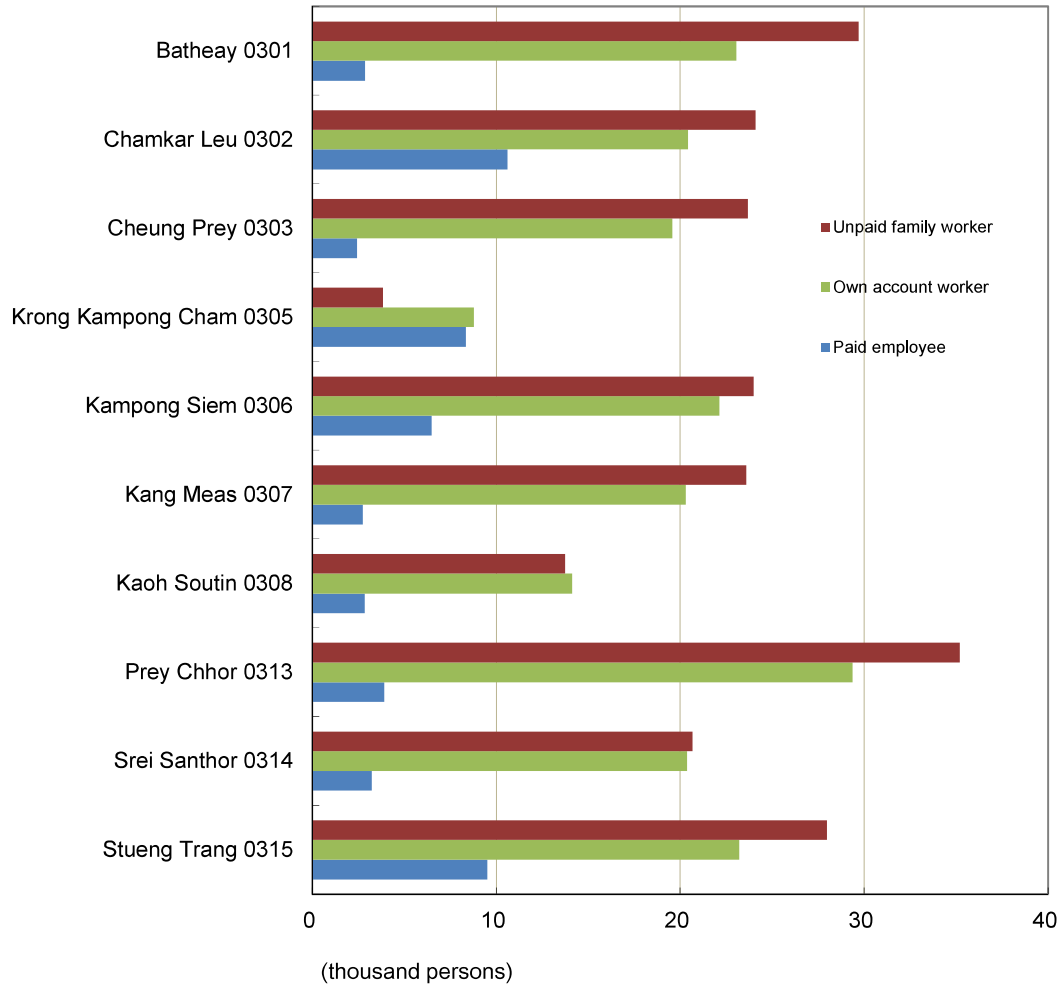


\* Excluding educational level "Others" and "Not stated".

**Graph 7. Number of Employed Persons aged 10 years and over by Sex and District - Kampong Cham (2008)**

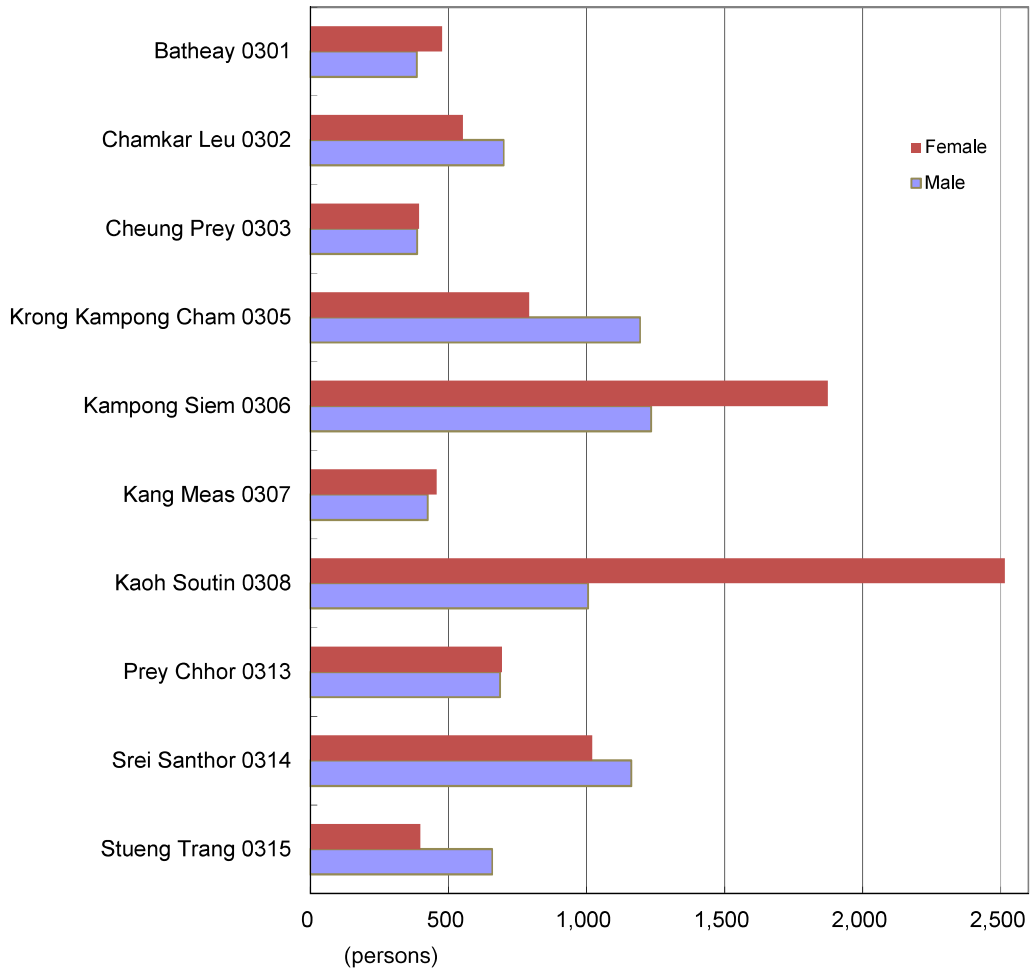


**Graph 8. Number of Employed Persons aged 10 years and over by Employment Status and District - Kampong Cham (2008)**



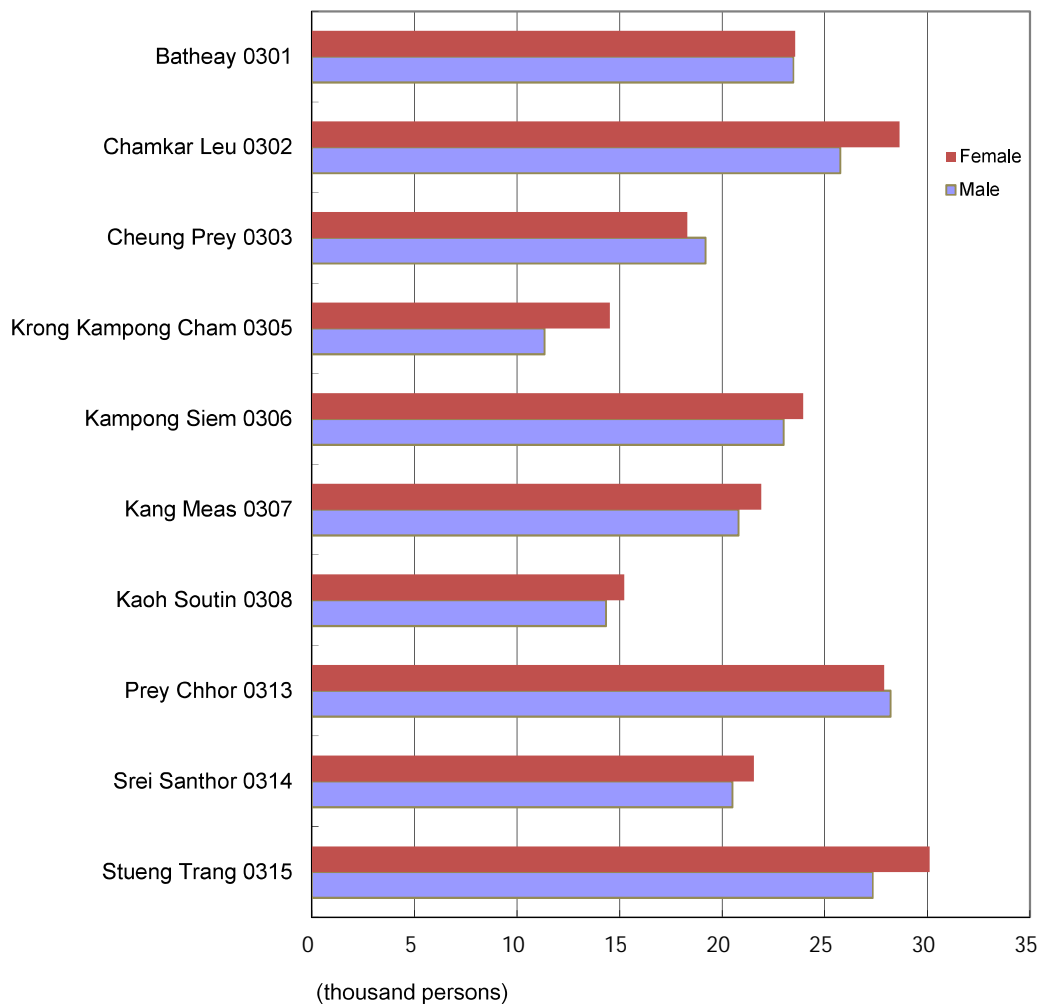


**Graph 9. Number of Employed Persons aged 10 years and over in Manufacturing Sector of ISIC by Sex and District - Kampong Cham (2008)**



\* ISIC stands for International Standard Industrial Classification.

**Graph 10. Number of Not Economically Active Persons by Sex and District - Kampong Cham (2008)**



\* *Not economically active persons include home makers, students, dependents, rent-receivers, retired persons or other income recipients, and others.*