

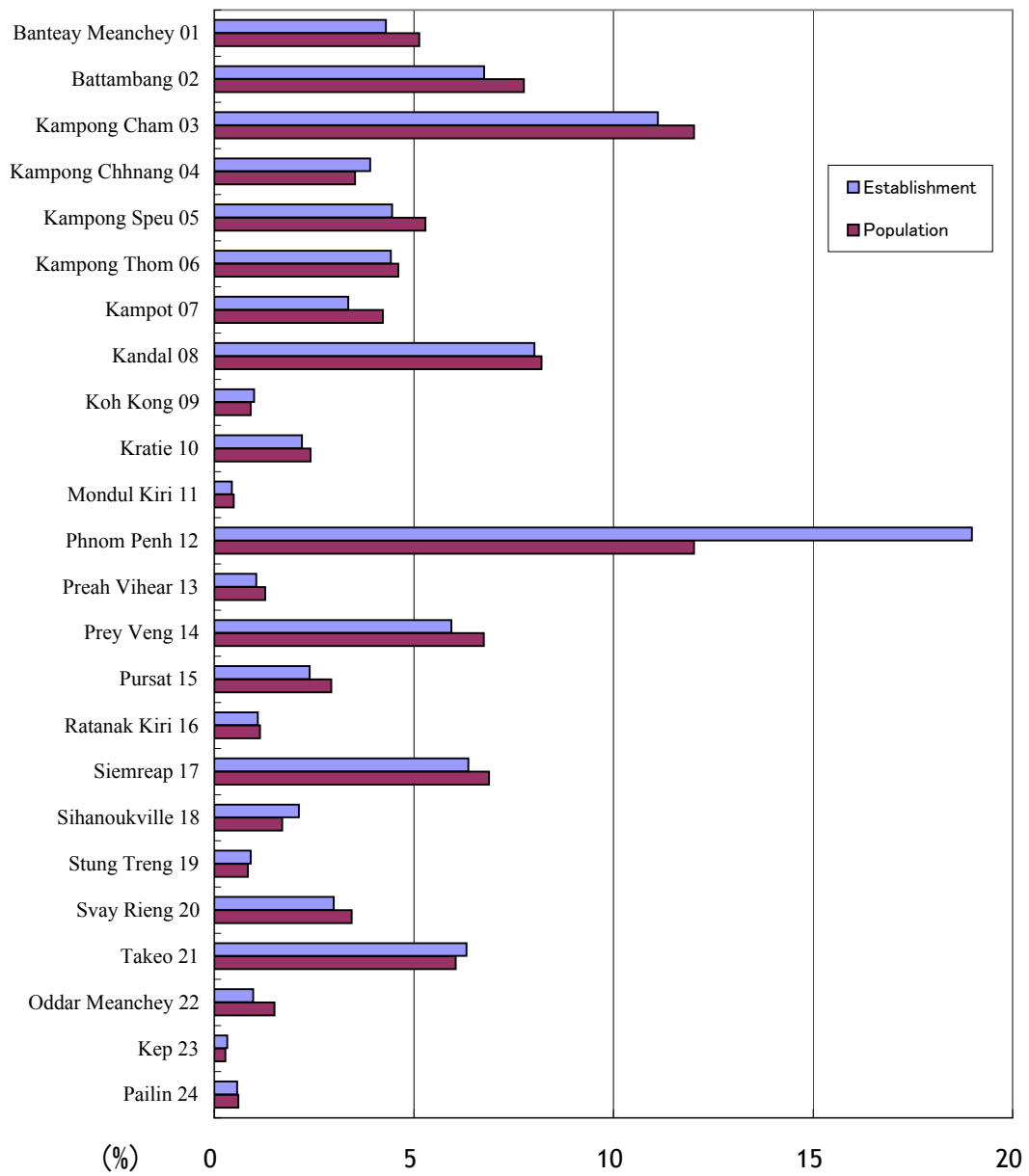
SECTION II:

Graph and Map

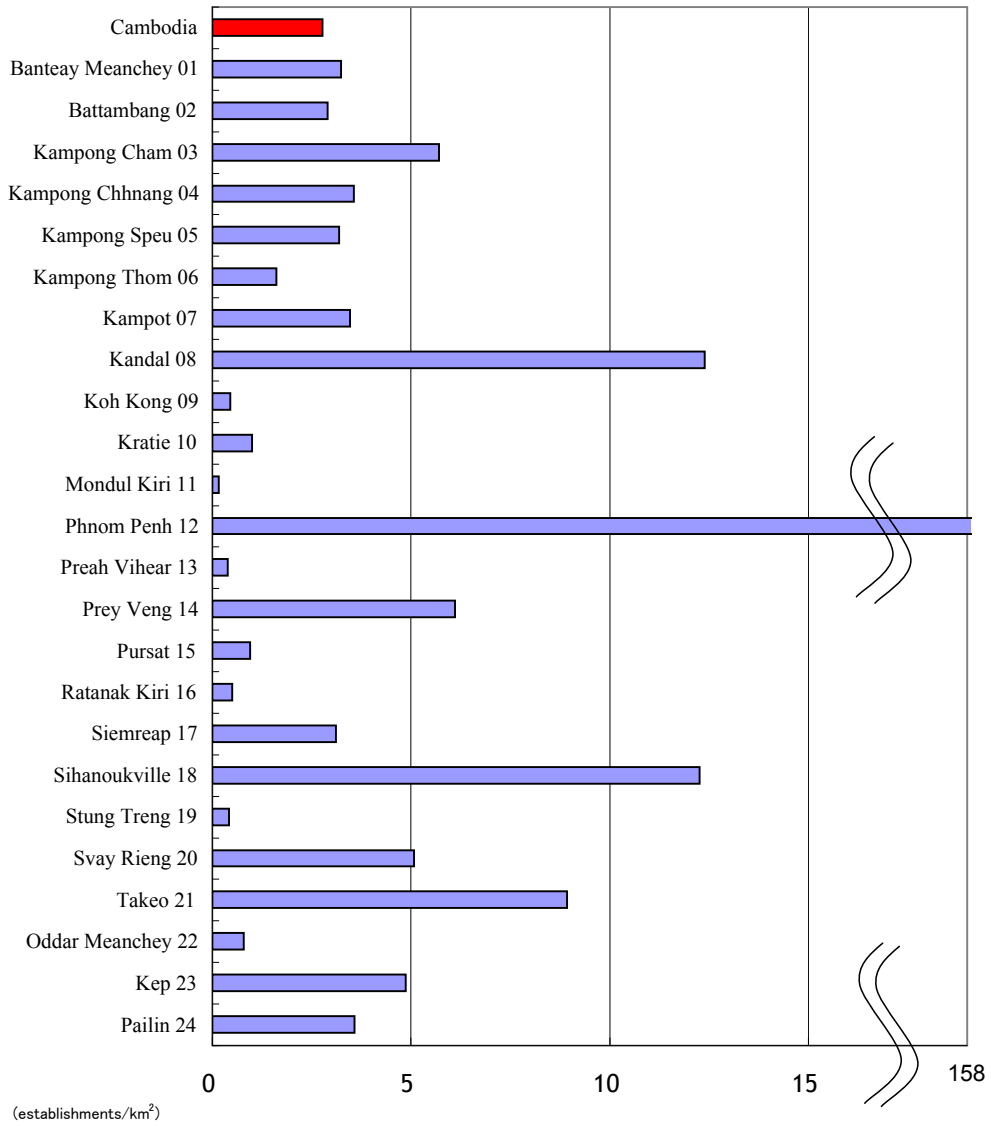
* The preliminary results are based on the new administrative areas promulgated on 5 November 2010. Refer to Appendix 5.

** The preliminary results are obtained from the Establishment Lists and Summary Sheets of Communes, and might be different from the final results which are to be obtained later from the individual Forms.

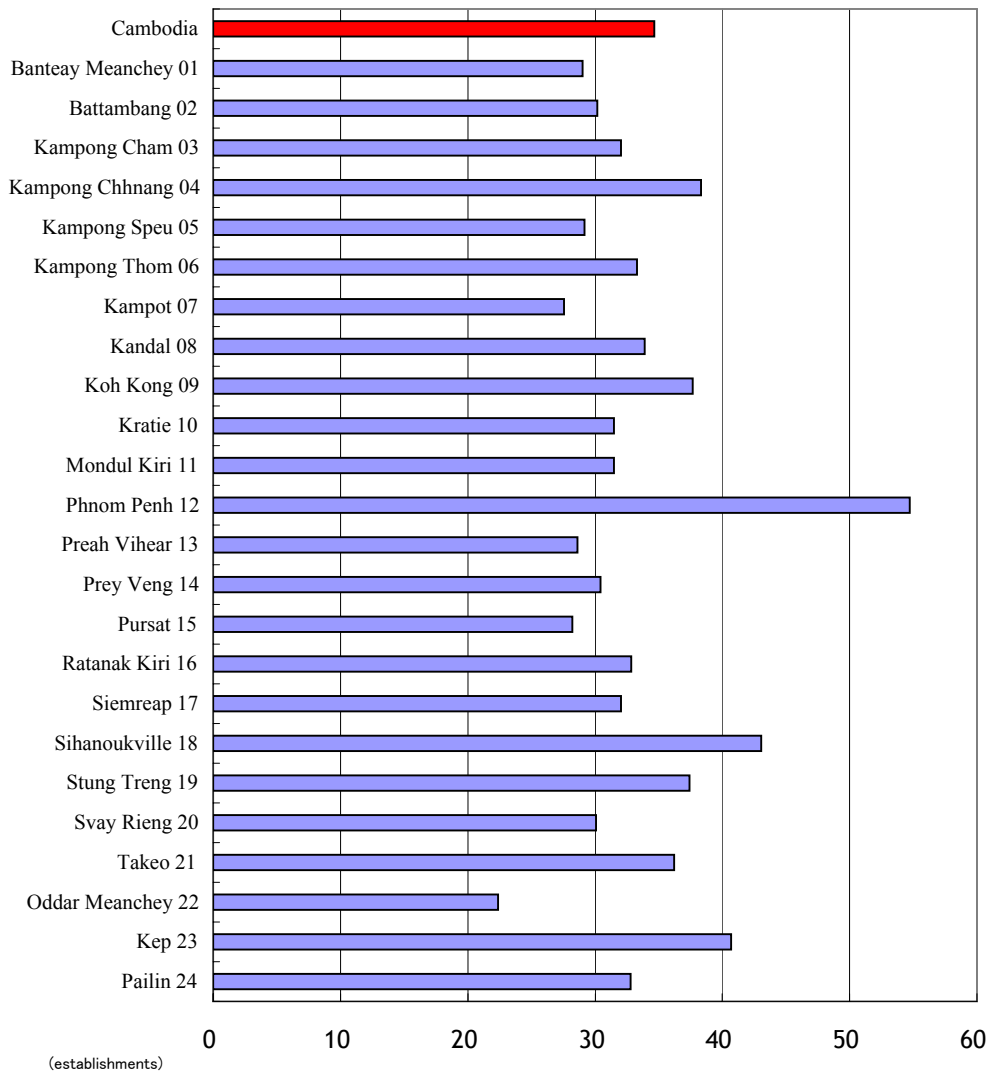
Graph 1. Percent to Total Number of Establishments of Cambodia by Province in 2011 and Percent to Total Population of Cambodia by Province in 2011 (Provisional)



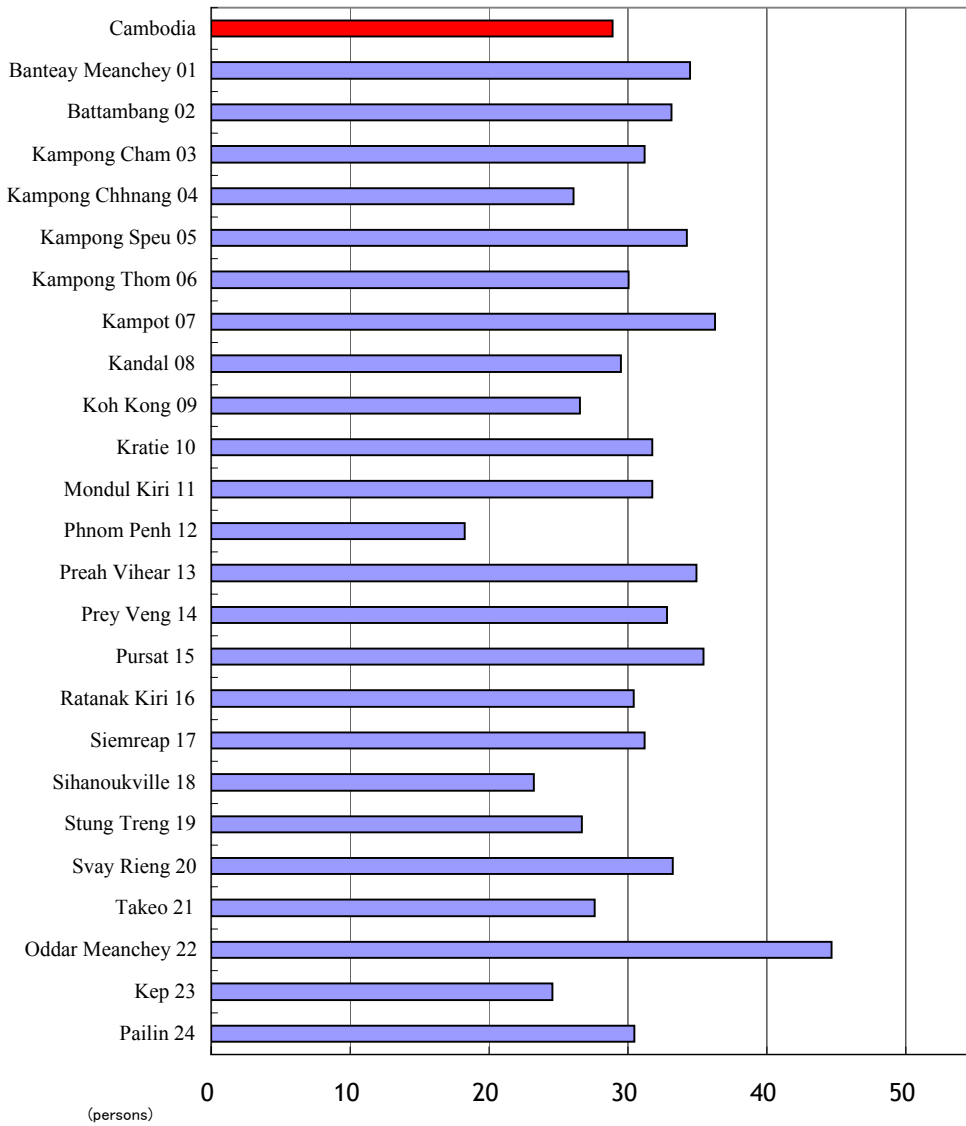
Graph 2. Provisional Establishment Density by Province in 2011



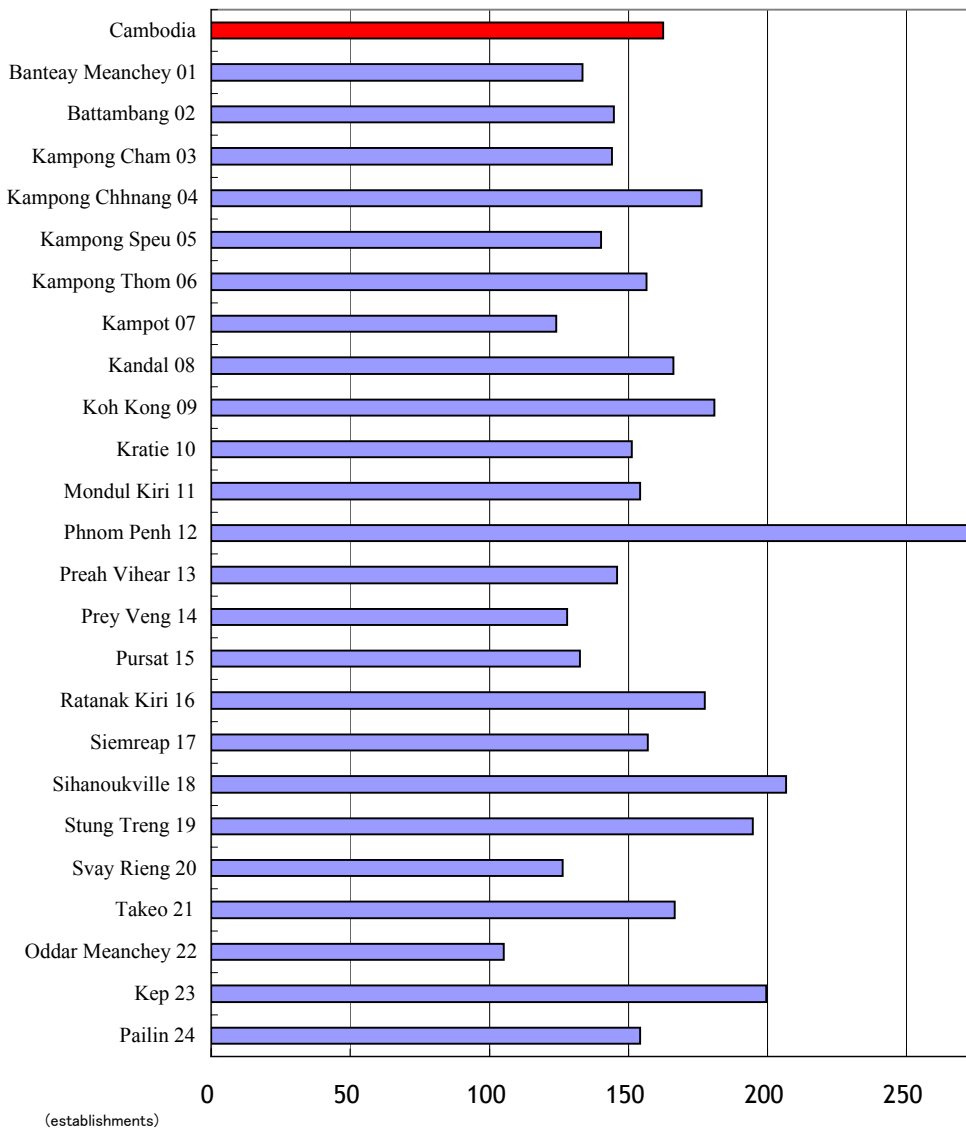
Graph 3-1. Provisional Number of Establishments per 1,000 Persons by Province in 2011



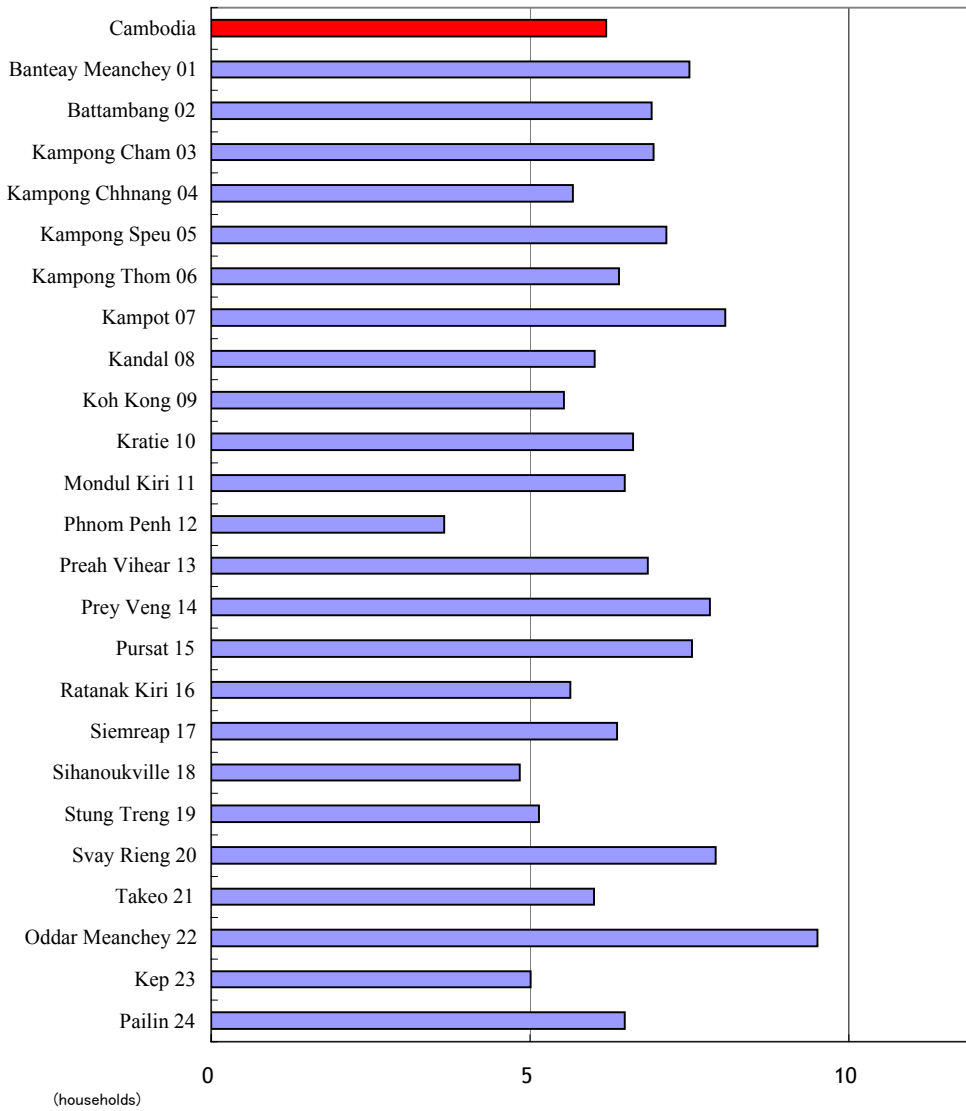
Graph 3-2. Provisional Population per Establishment by Province in 2011



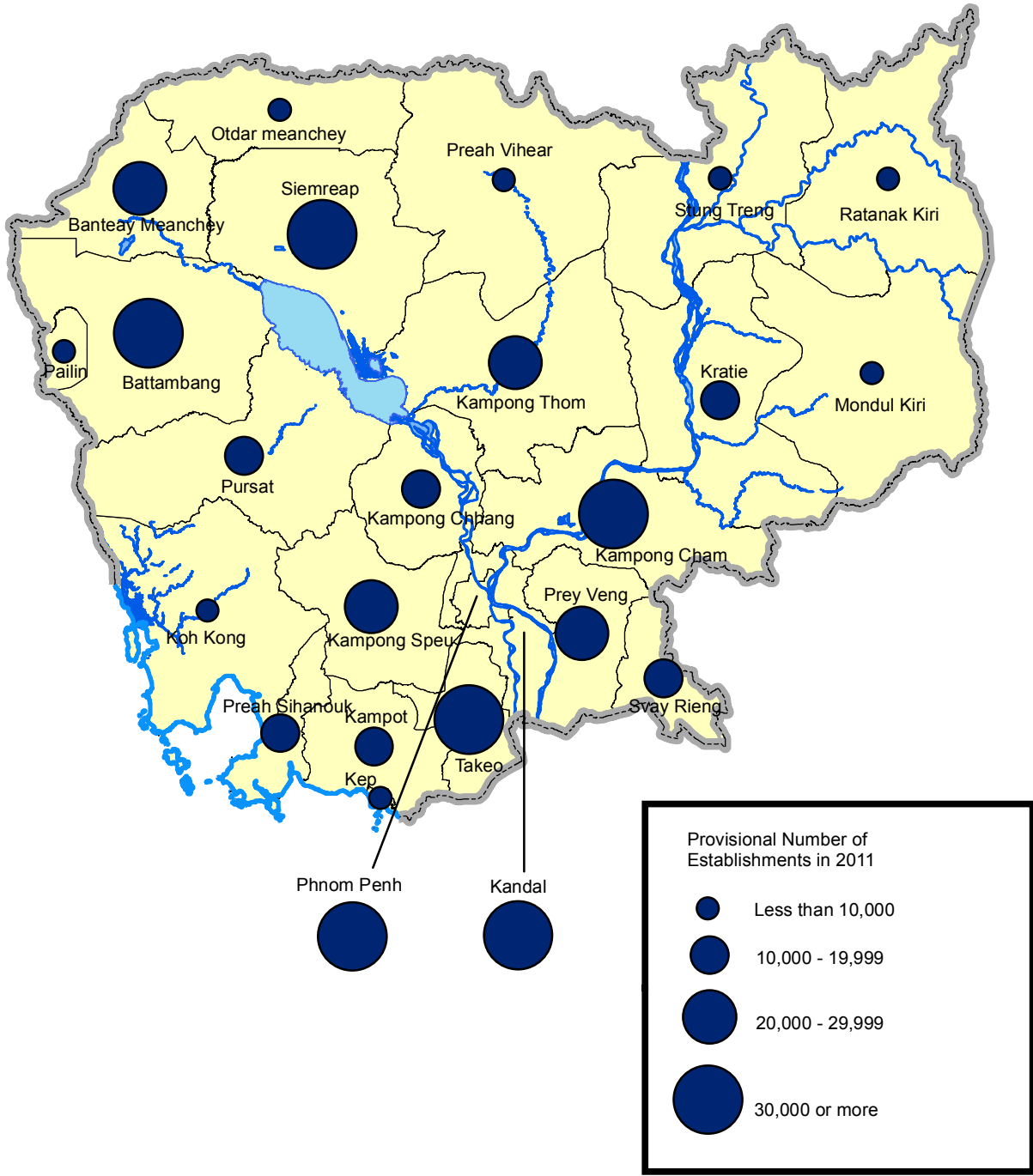
Graph 4-1. Provisional Number of Establishments per 1,000 Households by Province in 2011



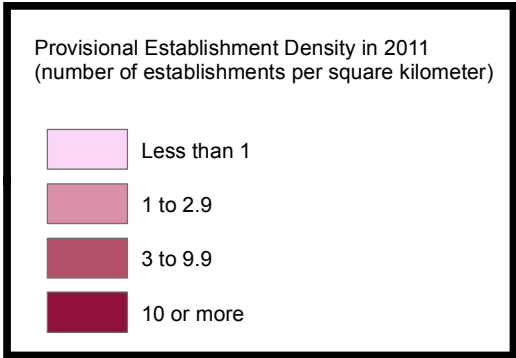
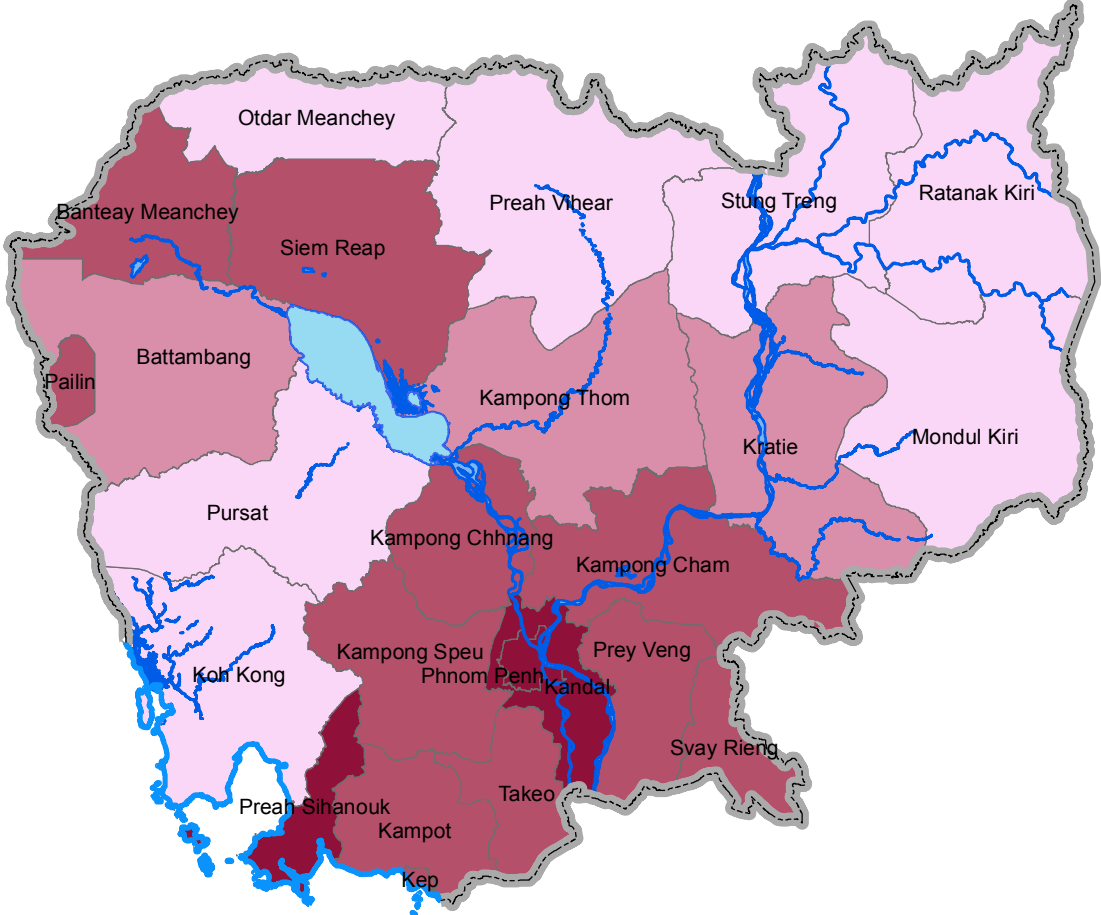
Graph 4-2. Provisional Number of Households per Establishment by Province in 2011



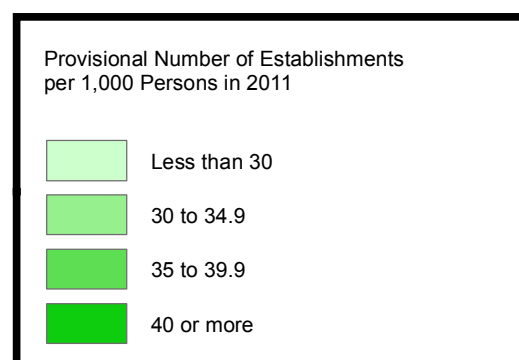
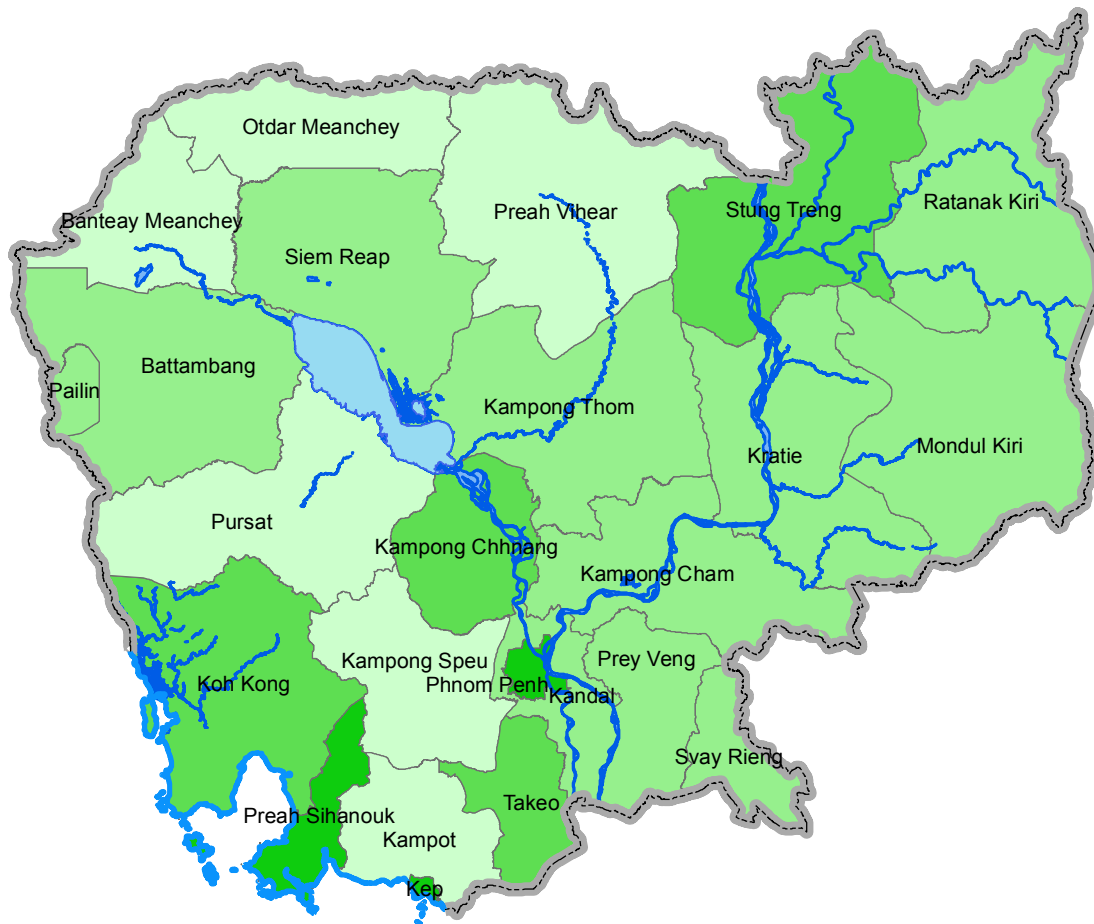
Map 1. Provisional Number of Establishments by Province in 2011



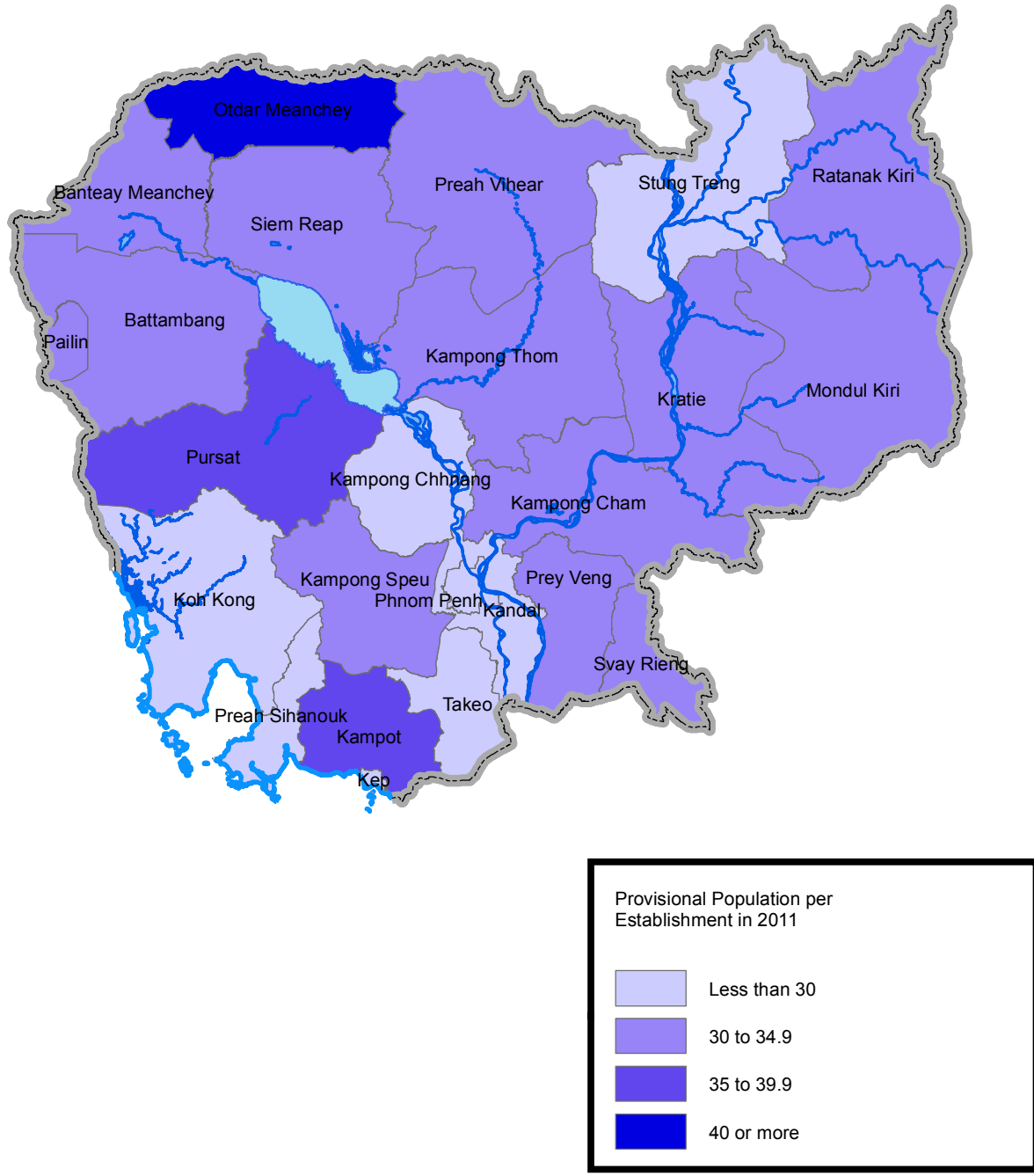
Map 2. Provisional Establishment Density by Province in 2011



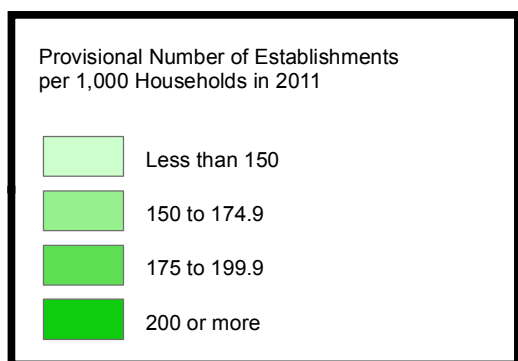
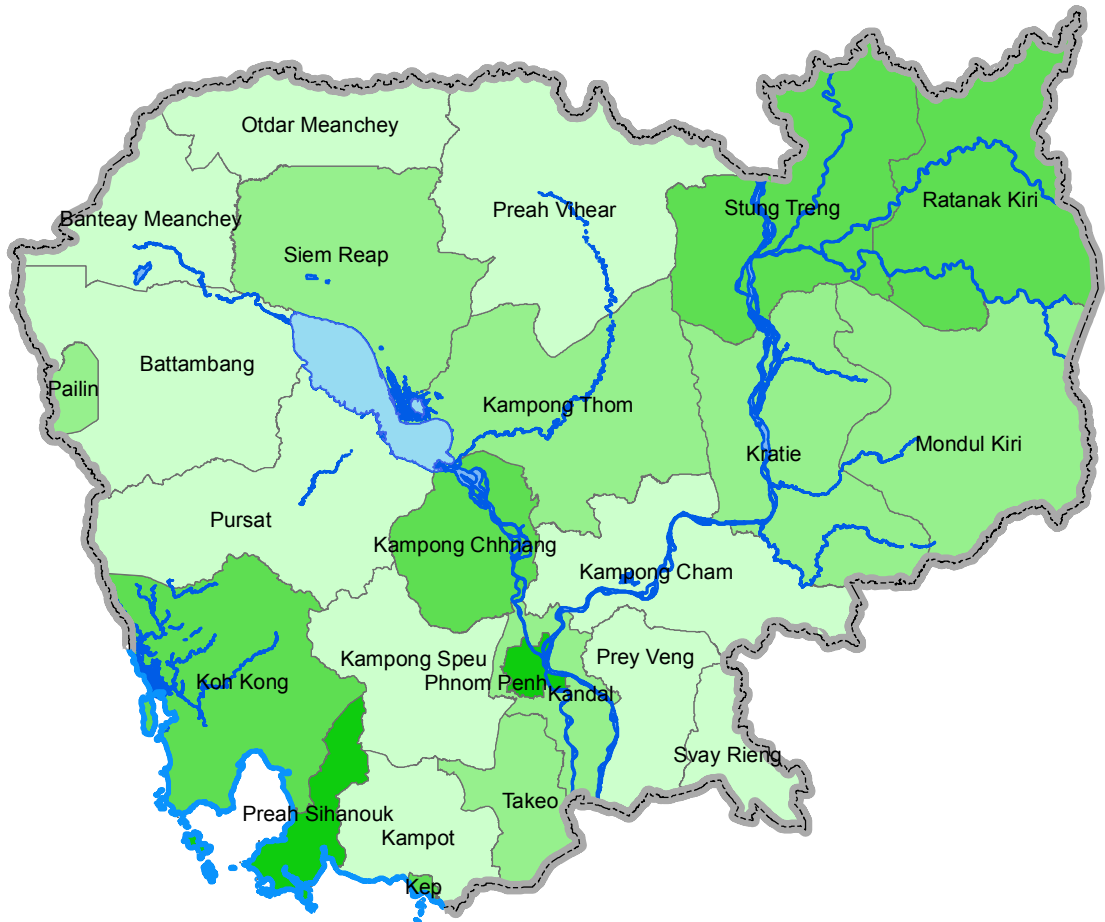
Map 3-1. Provisional Number of Establishments per 1,000 Persons by Province in 2011



Map 3-2. Provisional Population per Establishment by Province in 2011



Map 4-1. Provisional Number of Establishments per 1,000 Households by Province in 2011



Map 4-2. Provisional Number of Households per Establishment by Province in 2011

