

# Percent of Total Households in the Households Using Piped Water for Drinking by Commune

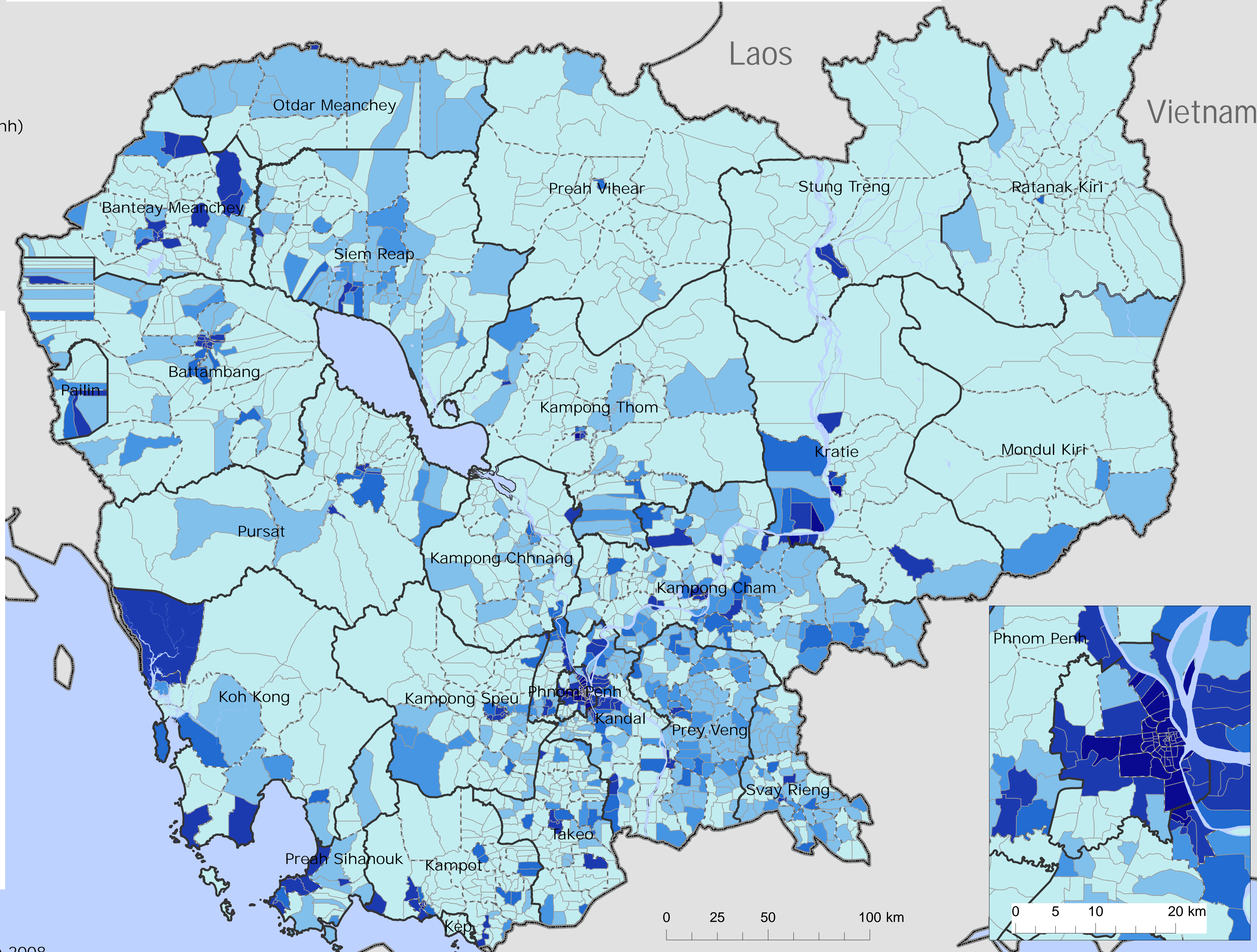
The Percent of Cambodia: 13.8  
 The Percent by Commune:  
 Min: 0.0 (51 communes)  
 Max: 99.7 (Boeng Prolit, Phnom Penh)  
 Average: 9.1

## Legend

- National Boundary
- Provincial boundary
- District boundary
- Commune boundary

Percent of the households using piped water for drinking by commune

- Lower than 2.0
- 2.0 - 4.9
- 5.0 - 9.9
- 10.0 - 19.9
- 20.0 - 74.9
- 75.0 or higher
- Water



Note:  
 The data used are those derived from  
 General Population Census of Cambodia 2008.