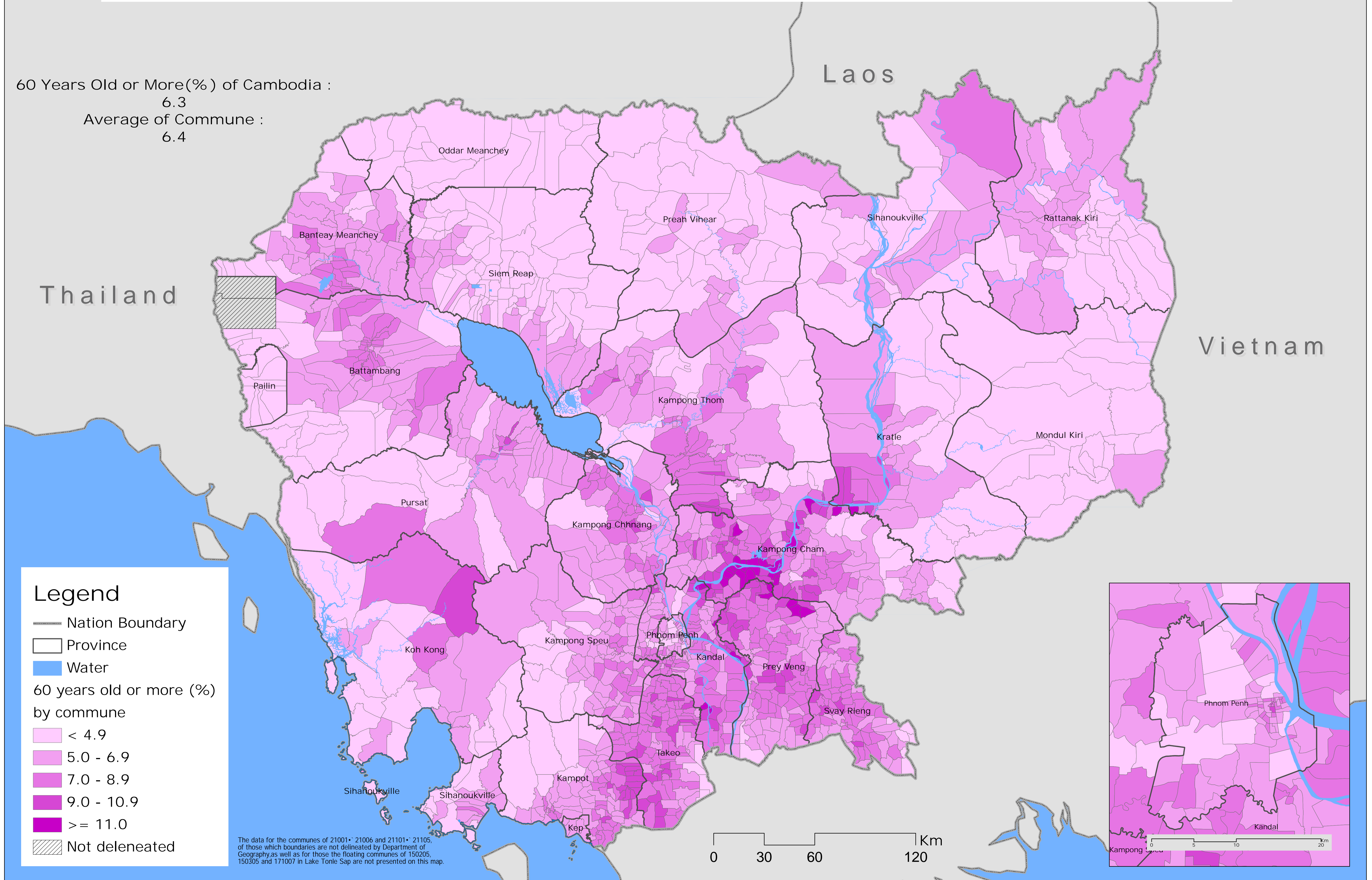


# Percent of Total Population in Population of 60 years old or more by Commune 2008 Population Census

60 Years Old or More(%) of Cambodia :  
 6.3  
 Average of Commune :  
 6.4



## Legend

— Nation Boundary

□ Province

■ Water

60 years old or more (%)  
 by commune

□ < 4.9

■ 5.0 - 6.9

■ 7.0 - 8.9

■ 9.0 - 10.9

■ ≥ 11.0

▨ Not delineated

The data for the communes of 21001\* 21006 and 21101\* 21105, of those which boundaries are not delineated by Department of Geography, as well as for those the floating communes of 150205, 150305 and 171007 in Lake Tonle Sap are not presented on this map.

0 30 60 120 Km

