

## CHAPTER 3

### SECONDARY ECONOMIC ACTIVITY

#### 3.1 CONCEPT OF SECONDARY ECONOMIC ACTIVITY

According to GPCC 2008 and CIPS 2013, the question of ‘Secondary economic activity’ (which is an economic activity done as secondary activity by individuals) was asked to every person whatever main activity he/she had. This question was introduced for the first time in GPCC 2008 and continued in CIPS 2013. The question intends to ascertain whether each person has a second job or an economic activity as ‘Secondary economic activity’ which gives him/her additional income in cash or in kind during the one year preceding the census/survey date.

The activity called ‘Secondary economic activity’ refers to a secondary or additional job for those who are mainly employed in the reference period of one year. For those who are mainly economically inactive (e.g. homemakers, students, etc.) or unemployed in the reference period, it refers to their marginal economic activity during the one year period. For example, a person whose main activity last year was farming might have worked as a construction worker some time. In this case, his/her ‘Secondary economic activity’ is classified as a construction worker. A youth who was studying at school might have worked as a security guard at night and got paid. Then, his/her ‘Secondary economic activity’ is a security guard.

#### 3.2 POPULATION ENGAGED IN SECONDARY ECONOMIC ACTIVITY

Table 3.1 indicates that 37.9% of the population aged 15 and over in Cambodia have a ‘Secondary economic activity’ besides their main activity. By employment status, 42.4 % of employed persons have a ‘Secondary economic activity’; 39.3% of unemployed persons who have an experience of employment before, and 20.6% of economically inactive persons have a ‘Secondary economic activity’.

By age, the age group with the lowest proportion of employed persons having a ‘Secondary economic activity’ is that of the youngest 15-19 age group. The proportion rises as age goes up till the 35-39 age group, and then declines. For unemployed persons, a similar pattern appears, but the peak comes a little earlier: at the 30-34 age group.

As for the economically inactive population, the highest functional category having a ‘Secondary economic activity’ is students (26.9%), followed by homemakers (19.5%). For these two categories, the youngest 15-19 age group has the highest proportion of having a ‘Secondary economic activity’. For dependents and rent receivers/retired, the highest proportion is found at the 20-24 age group.

Gender differences in the proportion of having a ‘Secondary economic activity’ are small as a whole. To be exact, the proportion of males having a ‘Secondary economic activity’ is higher than that of females among employed persons, unemployed persons and economically inactive persons in 2013. But, we see different observations for 2008, which indicates either instability in such economic indicators, or males’ more participation in economic activities in recent years, or both. See Figure 3.1.

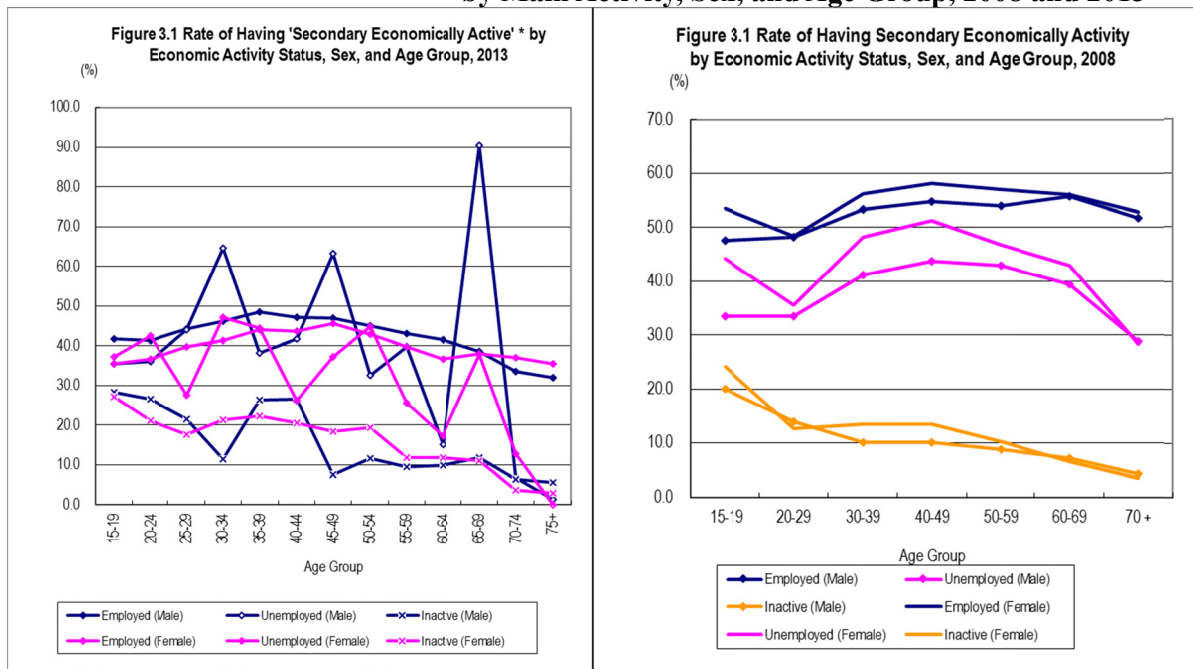
**Table 3.1 Rate of Persons Aged 5 Years and over Having 'Secondary Economic Activity'\*  
by Main Activity, Age Group and Sex, 2013**

Age group	Main Activity								
	Total**	Employed	Unemployed (Employed ever before)	Economically Inactive	Home Maker	Student	Dependent	Rent Receiver /Retired	Other
<b>Total (Aged 5 +)</b>	<b>31.6</b>	<b>42.3</b>	<b>39.3</b>	<b>14.3</b>	<b>19.5</b>	<b>16.2</b>	<b>5.1</b>	<b>8.3</b>	<b>10.0</b>
<b>Total (Aged 15 +)</b>	<b>37.9</b>	<b>42.4</b>	<b>39.3</b>	<b>20.6</b>	<b>19.5</b>	<b>26.9</b>	<b>7.9</b>	<b>8.3</b>	<b>10.1</b>
15-19	32.4	38.4	36.4	27.8	32.4	28.2	15.7	9.7	39.6
20-24	36.0	39.1	40.0	23.9	22.7	24.4	21.6	48.2	52.9
25-29	40.0	42.1	35.9	18.8	19.3	18.7	17.9	17.3	0.0
30-34	42.5	43.8	55.1	20.3	21.1	14.1	21.9	0.0	0.0
35-39	45.0	46.4	41.7	22.5	23.4	18.3	17.0	0.0	0.0
40-44	43.9	45.4	33.4	21.0	22.9	20.2	0.0	21.0	0.0
45-49	44.6	46.3	48.6	17.4	19.4	13.1	6.1	0.0	33.5
50-54	41.8	43.9	39.1	18.7	21.2	0.0	8.9	17.8	0.0
55-59	37.3	41.2	30.9	11.5	13.5	0.0	7.3	9.1	2.7
60-64	32.9	38.9	16.5	11.5	14.6	0.0	6.3	13.3	100.0
65-69	29.6	38.3	51.1	11.2	20.3	11.4	4.9	8.9	16.0
70-74	17.9	35.2	10.6	4.5	4.5	0.0	4.4	5.3	0.0
75 and over	11.7	33.6	0.5	3.8	7.0	0.0	3.0	5.1	0.0
<b>Male</b>									
<b>Total (Aged 5 +)</b>	<b>33.5</b>	<b>44.3</b>	<b>43.9</b>	<b>14.8</b>	<b>21.8</b>	<b>17.0</b>	<b>5.3</b>	<b>11.9</b>	<b>10.3</b>
<b>Total (Aged 15 +)</b>	<b>40.8</b>	<b>44.3</b>	<b>43.5</b>	<b>23.7</b>	<b>21.6</b>	<b>27.9</b>	<b>9.3</b>	<b>11.9</b>	<b>10.4</b>
15-19	33.6	41.7	35.5	28.2	34.4	28.8	16.3	0.0	55.4
20-24	38.3	41.4	36.0	26.5	34.1	26.9	20.3	0.0	0.0
25-29	43.1	44.3	44.0	21.5	27.2	20.9	20.0	0.0	0.0
30-34	45.8	46.1	64.5	11.5	14.2	14.4	6.7	0.0	0.0
35-39	48.3	48.6	38.2	26.4	39.9	0.0	32.5	0.0	0.0
40-44	47.0	47.2	41.8	26.7	39.8	0.0	0.0	93.3	0.0
45-49	46.5	46.9	63.2	7.6	7.9	0.0	9.1	0.0	0.0
50-54	44.5	45.1	32.5	11.7	16.6	0.0	0.0	34.3	0.0
55-59	41.2	43.0	39.8	9.5	5.0	0.0	2.4	18.0	4.6
60-64	38.1	41.6	15.1	9.9	14.3	0.0	0.0	18.9	0.0
65-69	33.8	38.6	90.5	11.8	34.5	0.0	0.0	8.8	51.3
70-74	22.0	33.5	6.7	6.4	7.1	0.0	4.7	9.4	0.0
75 and over	15.5	32.1	1.4	5.5	5.0	0.0	5.4	7.2	0.0
<b>Female</b>									
<b>Total (Aged 5 +)</b>	<b>29.9</b>	<b>40.4</b>	<b>35.5</b>	<b>13.8</b>	<b>19.2</b>	<b>15.2</b>	<b>5.0</b>	<b>6.2</b>	<b>9.9</b>
<b>Total (Aged 15 +)</b>	<b>35.2</b>	<b>40.4</b>	<b>35.9</b>	<b>18.5</b>	<b>19.2</b>	<b>25.6</b>	<b>7.1</b>	<b>6.2</b>	<b>9.9</b>
15-19	31.0	35.4	37.3	27.2	31.8	27.5	15.0	10.0	32.8
20-24	33.7	36.8	42.4	21.2	21.1	20.3	23.1	100.0	80.1
25-29	37.0	39.8	27.6	17.6	18.6	15.2	15.6	17.3	0.0
30-34	39.4	41.4	47.2	21.4	21.3	13.7	32.4	0.0	0.0
35-39	41.9	44.0	44.5	22.2	22.9	30.6	7.6	0.0	0.0
40-44	41.2	43.6	26.1	20.6	22.3	34.9	0.0	2.5	0.0
45-49	42.8	45.7	37.3	18.4	19.8	16.6	3.9	0.0	100.0
50-54	39.6	42.8	44.7	19.4	21.4	0.0	10.8	14.2	0.0
55-59	34.7	39.9	25.7	11.9	14.2	0.0	8.8	1.9	0.0
60-64	29.4	36.6	17.2	11.9	14.7	0.0	8.1	10.2	100.0
65-69	26.6	38.0	37.8	11.1	17.6	11.4	6.6	8.9	0.0
70-74	15.1	37.1	12.7	3.7	3.8	0.0	4.2	2.2	0.0
75 and over	9.2	35.5	0.0	2.9	7.8	0.0	1.9	3.6	0.0

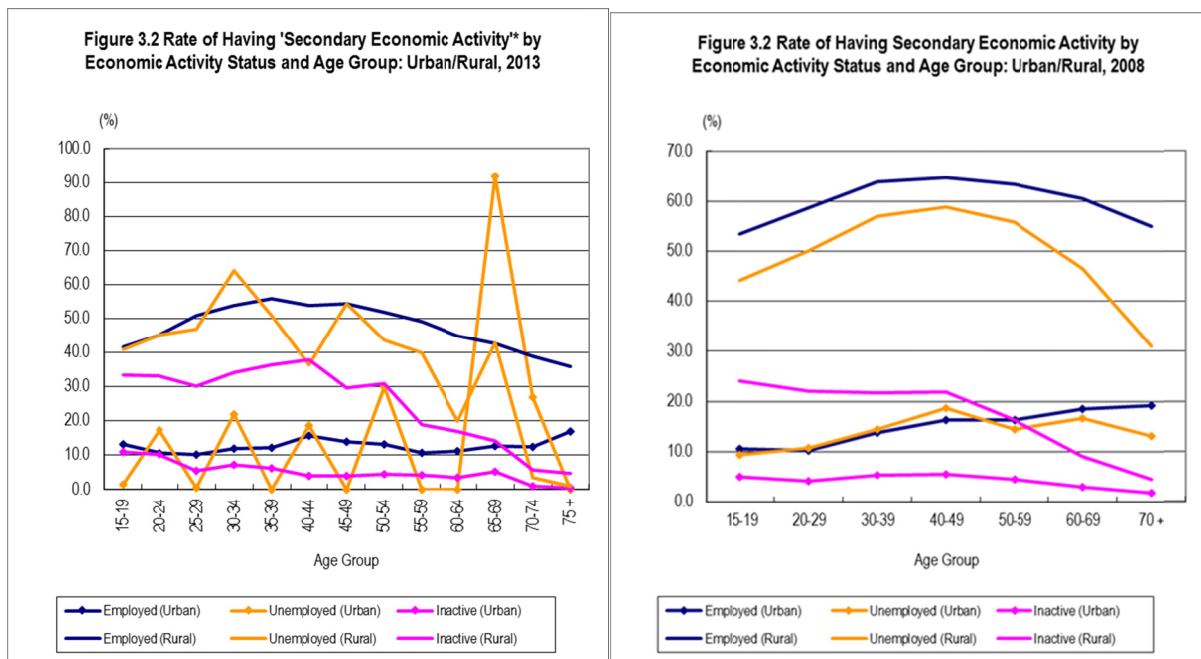
\* Rate of Having Secondary Economic Activity for a given main activity status and age group, expressed in percentage, is the proportion of the persons having secondary economic activity to the total number of persons having the corresponding main activity status and age group.

\*\* Excluding 'Unemployed (Employed never before)' persons

**Figure 3.1 Rate of Persons Aged 15 Years and over Having ‘Secondary Economic Activity by Main Activity, Sex, and Age Group, 2008 and 2013**



**Figure 3.2 Rate of Persons Aged 15 Years and over Having ‘Secondary Economic Activity by Main Activity, and Age Group: Urban/Rural, 2008 and 2013**



**Table 3.2 Rate of Persons Aged 5 Years and over Having 'Secondary Economic Activity'\*  
by Main Activity, and Age Group: Urban/Rural, 2013**

Age group	Main Activity								
	Total**	Employed	Unemployed (Employed ever before)	Economically Inactive	Home Maker	Student	Dependent	Rent Receiver / Retired	Other
<b>Urban</b>									
<b>Total (Aged 5 +)</b>	<b>9.3</b>	<b>12.2</b>	<b>12.5</b>	<b>5.5</b>	<b>5.1</b>	<b>6.1</b>	<b>3.4</b>	<b>3.2</b>	<b>14.5</b>
<b>Total (Aged 15 +)</b>	<b>10.8</b>	<b>12.2</b>	<b>12.6</b>	<b>7.5</b>	<b>5.0</b>	<b>10.3</b>	<b>4.2</b>	<b>3.2</b>	<b>14.5</b>
15-19	11.4	13.1	1.5	10.9	14.7	10.7	11.4	0.0	46.6
20-24	10.6	10.7	17.4	10.2	7.7	10.7	8.4	0.0	66.7
25-29	9.3	10.2	0.5	5.3	3.5	6.8	10.8	0.0	0.0
30-34	11.5	12.0	22.0	7.1	6.0	9.7	28.5	0.0	0.0
35-39	11.4	12.2	0.0	6.1	5.3	0.0	38.0	0.0	0.0
40-44	14.2	15.6	18.5	3.9	4.1	0.0	0.0	4.9	0.0
45-49	12.6	13.9	0.0	3.9	4.0	0.0	0.0	0.0	100.0
50-54	11.9	13.2	29.8	4.4	4.4	0.0	0.0	13.3	0.0
55-59	8.9	10.7	0.0	4.2	2.9	0.0	2.5	10.3	0.0
60-64	8.2	11.3	0.0	3.5	4.7	0.0	4.5	0.4	0.0
65-69	9.1	12.7	91.8	5.3	7.5	0.0	6.0	3.2	0.0
70-74	4.7	12.4	26.8	1.0	0.0	0.0	0.0	2.7	0.0
75 and over	3.4	16.8	0.0	0.4	0.2	0.0	0.6	0.0	0.0
<b>Rural</b>									
<b>Total (Aged 5 +)</b>	<b>37.7</b>	<b>49.7</b>	<b>45.8</b>	<b>17.1</b>	<b>29.4</b>	<b>19.2</b>	<b>5.5</b>	<b>13.1</b>	<b>8.5</b>
<b>Total (Aged 15 +)</b>	<b>45.7</b>	<b>49.8</b>	<b>45.9</b>	<b>27.0</b>	<b>29.5</b>	<b>34.3</b>	<b>8.9</b>	<b>13.2</b>	<b>8.5</b>
15-19	37.4	41.7	40.8	33.4	37.3	34.4	16.3	10.2	32.8
20-24	43.1	45.0	45.1	33.1	31.8	34.7	25.2	88.0	43.9
25-29	49.6	50.9	46.8	30.2	31.5	33.5	20.8	26.7	0.0
30-34	53.3	54.0	64.2	34.1	37.5	28.8	20.2	0.0	0.0
35-39	55.0	55.8	50.9	36.4	39.4	26.3	9.9	0.0	0.0
40-44	53.1	53.8	36.3	37.9	41.9	26.0	0.0	89.0	0.0
45-49	53.5	54.5	54.4	29.7	33.9	33.2	10.3	0.0	0.0
50-54	50.7	51.9	43.5	31.0	36.4	0.0	13.1	22.7	0.0
55-59	46.5	49.2	40.0	18.9	23.3	0.0	11.3	6.9	7.2
60-64	40.0	44.8	19.8	16.9	20.7	0.0	7.3	31.7	100.0
65-69	34.8	42.5	42.8	14.2	24.9	14.3	4.4	16.8	18.1
70-74	21.1	38.9	3.5	5.6	5.8	0.0	5.3	7.4	0.0
75 and over	13.5	36.0	0.8	4.6	8.6	0.0	3.5	7.6	0.0

\* Rate of Having Secondary Economically Active for a given main activity status and age group, expressed in percentage, is the proportion of the persons having secondary economic activity to the total number of persons having the corresponding main activity status and age group.

\*\* Excluding 'Unemployed (Employed never before)' Persons

There are distinct urban/rural differences in the likelihood of having a 'Secondary economic activity' (Table 3.2). For the total employed persons, the proportion in urban areas is very small (12.2%) compared with that in rural areas (49.8%).

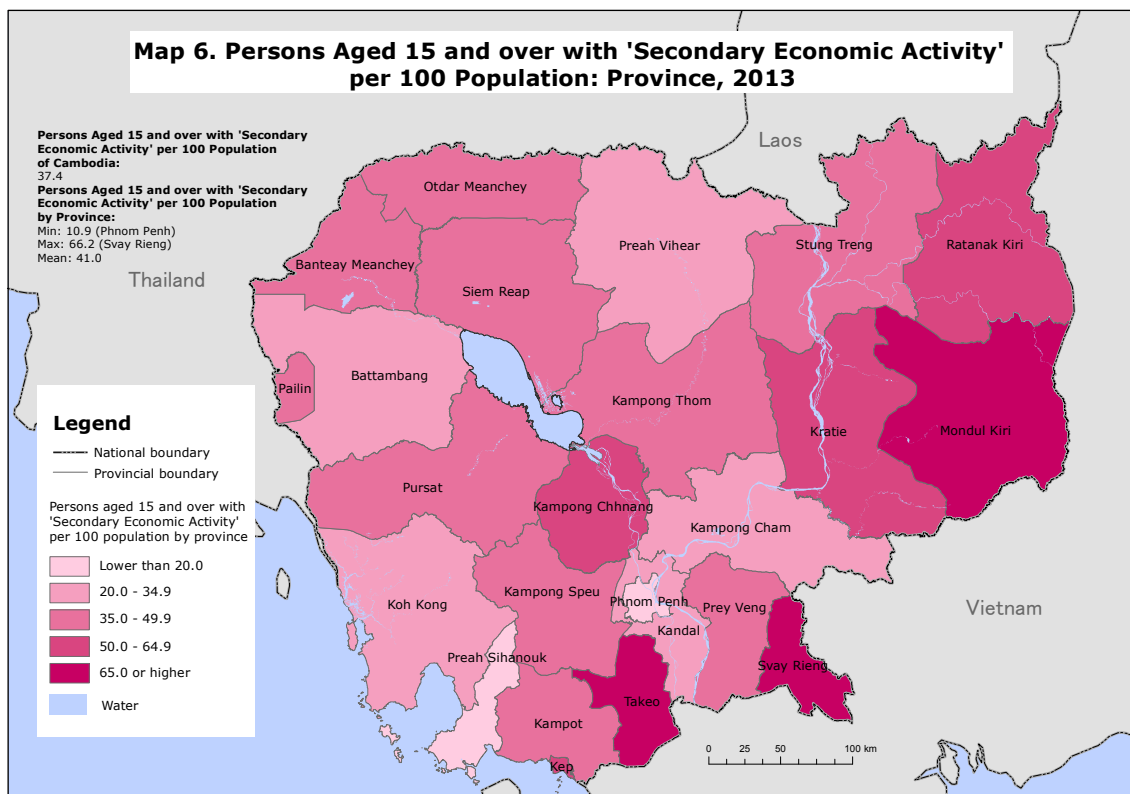
The proportion of persons who are unemployed (employed ever before) or economically inactive in urban areas having a 'Secondary economic activity' is also much lower than that in rural areas (12.6% vs. 45.9% for unemployed persons, and 7.5% vs. 27.0% for economically inactive persons).

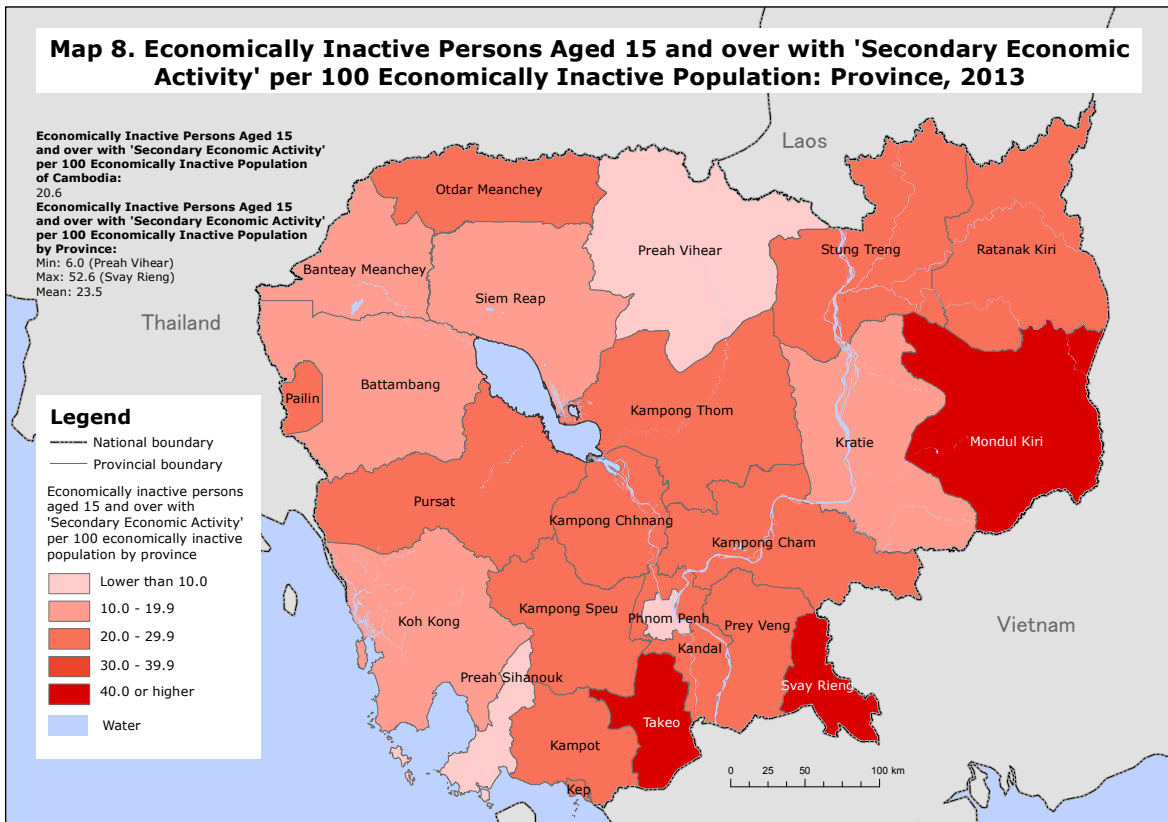
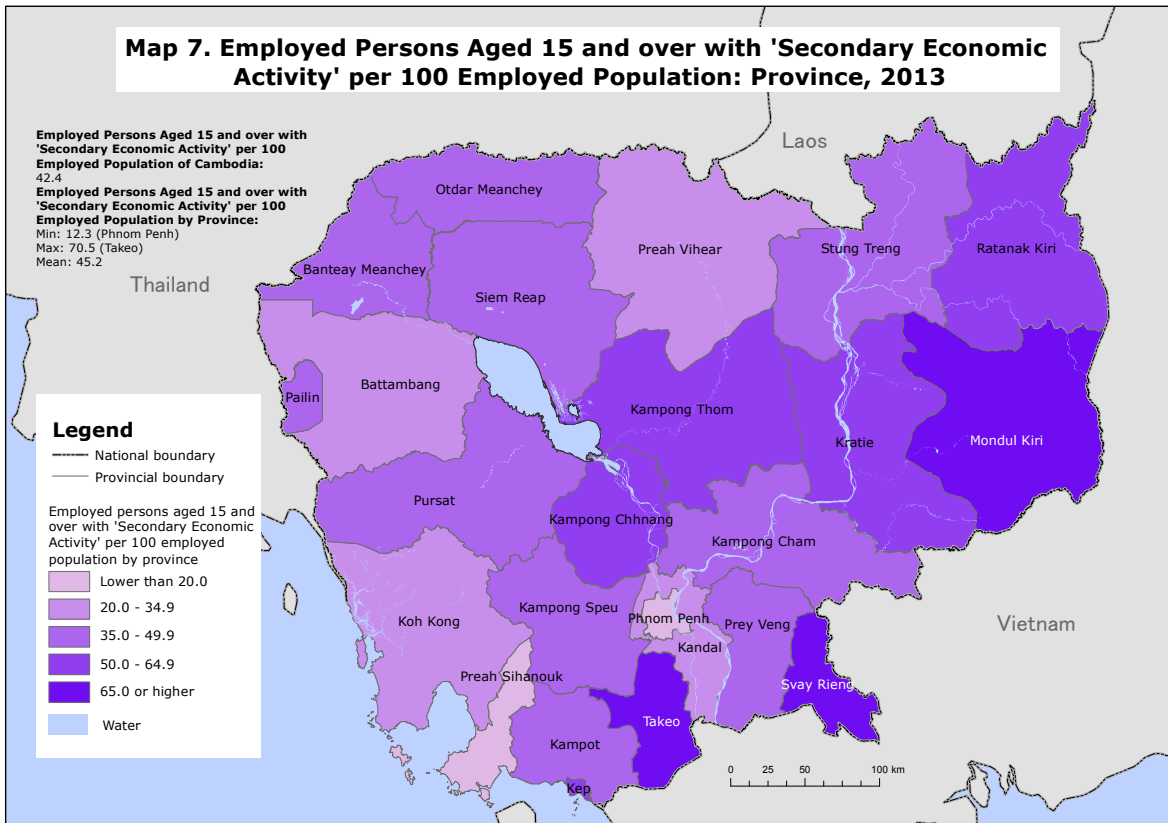
We can see similar observations on the urban/rural differences for 2008.

Table 3.3 shows differences among regions and provinces. As for regional differences, the proportion of persons aged 15 and over having a ‘Secondary economic activity’ in Phnom Penh (11.2%) is by far lower than those in other regions, in which it ranges from 34.4% (Tonle Sap) to 43.9% (Other Plains). Compared with 2008 figures, Phnom Penh gained 5.8 points from 5.4%, while other regions lost from a 45.4% – 51.6% range.

As for provincial differences, the proportion of persons who have a ‘Secondary economic activity’ is the lowest for Phnom Penh (11.2%), followed by Preah Sihanouk (13.7%), Koh Kong (22.4%) and Preah Vihear (23.3%). In 2008, Pailin, Preah Sihanouk and Koh Kong were the 2nd, 3rd and 4th lowest. The highest proportion is recorded by Svay Rieng (66.3%), followed by Mondul Kiri (65.9%), and Takeo (65.7%). Svay Rieng was also the highest in 2008, but we cannot see much consistency with 2008 figures or rankings with respect to this proportion.

More than 40 % of the employed population have a ‘Secondary economic activity’ in 17 provinces, and more than 40% of the unemployed population do so in 13 provinces in 2013. As to the economically inactive population, more than 20% of the population have a ‘Secondary economic activity’ in 16 provinces.





**Table 3.3 Number and Rate of Persons Aged 15 and over Having 'Secondary Economic Activity' by Economic Activity Status: Province, 2013**

Province	Total Persons				Number of Persons Having 'Secondary Economic Activity				Rate of Having 'Secondary Economic Activity					
	Total	Employed	Unemployed (Employed ever before)	Economically Inactive	Total	Employed	Unemployed (Employed ever before)	Economically Inactive	Total	Employed	Unemployed (Employed ever before)	Economically Inactive	Rate of Having 'Secondary Economic Activity	
													Employed	Economically Inactive
<b>Cambodia Total</b>	<b>10,237,905</b>	<b>8,060,351</b>	<b>83,241</b>	<b>2,094,313</b>	<b>3,877,651</b>	<b>3,414,022</b>	<b>32,678</b>	<b>430,951</b>	<b>37.9</b>	<b>42.4</b>	<b>39.3</b>	<b>20.6</b>		
Urban	2,301,581	1,598,114	16,545	686,922	248,277	195,000	2,085	51,192	10.8	12.2	12.6	7.5		
Rural	7,936,324	6,462,237	66,695	1,407,392	3,629,374	3,219,022	30,593	379,759	45.7	49.8	45.9	27.0		
<b>Region</b>														
Phnom Penh	1,280,356	882,988	6,479	390,889	143,056	108,384	451	34,221	11.2	12.3	7.0	8.8		
Plain	3,897,157	3,103,470	29,783	763,904	1,711,646	1,471,956	15,955	223,735	43.9	47.4	53.6	29.3		
Tonle Sap	3,199,496	2,564,411	30,605	604,481	1,284,571	1,165,638	12,031	106,902	40.1	45.5	39.3	17.7		
Coastal	724,470	549,994	4,015	170,462	249,138	219,125	747	29,266	34.4	39.8	18.6	17.2		
Plateau/Mountain	1,136,425	959,487	12,360	164,578	489,240	448,919	3,495	36,826	43.1	46.8	28.3	22.4		
<b>Province</b>														
Banteay Meanchey	517,267	416,288	5,253	95,725	201,647	189,127	2,576	9,944	39.0	45.4	49.0	10.4		
Battambang	761,491	578,296	8,646	174,549	203,444	172,903	3,806	26,734	26.7	29.9	44.0	15.3		
Kampong Cham	1,213,727	938,152	16,854	258,720	399,794	330,864	10,823	58,107	32.9	35.3	64.2	22.5		
Kampong Chhnang	354,500	297,361	3,072	54,067	199,564	185,473	1,727	12,364	56.3	62.4	56.2	22.9		
Kampong Speu	521,389	443,917	9,764	67,708	214,610	192,960	2,114	19,536	41.2	43.5	21.7	28.9		
Kampong Thom	471,090	385,351	5,429	80,310	230,870	211,100	2,439	17,331	49.0	54.8	44.9	21.6		
Kampot	437,357	348,473	845	88,040	192,980	173,928	210	19,052	44.1	49.9	0.0	21.6		
Kandal	809,156	627,421	3,433	178,302	252,947	207,331	210	45,406	31.3	33.0	6.1	25.5		
Koh Kong	80,000	56,427	1,709	21,864	17,930	13,496	356	4,077	22.4	23.9	20.9	18.6		
Kratie	227,931	190,027	370	37,534	121,417	114,733	273	6,412	53.3	60.4	73.6	17.1		
Mondul Kiri	43,250	38,582	60	4,609	28,488	26,225	39	2,224	65.9	68.0	65.2	48.3		
Phnom Penh	1,280,356	882,988	6,479	390,889	143,056	108,384	451	34,221	11.2	12.3	7.0	8.8		
Preah Vihear	149,661	121,955	347	27,359	34,819	33,023	145	1,651	23.3	27.1	41.7	6.0		
Prey Veng	787,917	639,346	4,278	144,293	342,459	307,242	1,738	33,478	43.5	48.1	40.6	23.2		
Pursat	299,543	239,603	2,688	57,253	128,520	114,216	643	13,661	42.9	47.7	23.9	23.9		
Ratanak Kiri	114,488	98,802	513	15,173	59,458	55,146	463	3,848	51.9	55.8	90.3	25.4		
Siemreap	596,039	482,984	3,625	109,430	235,434	216,608	764	18,062	39.5	44.8	21.1	16.5		
Preah Sihanouk	181,040	124,163	1,370	55,506	24,808	19,510	342	4,957	13.7	15.7	24.9	8.9		
Stung Treng	79,706	66,205	1,306	12,195	30,448	26,833	461	3,155	38.2	40.5	35.3	25.9		
Svay Rieng	420,642	361,370	614	58,658	278,826	247,828	128	30,870	66.3	68.6	20.8	52.6		
Takeo	665,716	537,181	4,603	123,931	437,620	378,689	3,056	55,874	65.7	70.5	66.4	45.1		
Otdar Meanchey	154,784	130,022	1,702	23,060	67,466	61,080	49	6,386	43.6	47.0	0.0	27.7		
Kep	26,074	20,931	91	5,052	13,419	12,191	49	1,180	51.5	58.2	53.4	23.4		
Pailin	44,781	34,506	188	10,086	17,625	15,130	76	2,419	39.4	43.8	40.1	24.0		

\* Rate of Having Secondary Economic Activity for a given main activity status and age group, expressed in percentage, is the proportion of the persons having secondary economic activity to the total number of persons having the corresponding main activity status and age group.

### 3.3 SECONDARY ACTIVITY AND MAIN ACTIVITY

When a person was identified as a person having a 'Secondary economic activity', the type of his/her activity was ascertained, and then he/she was classified into 10 categories. In Table 3.4, those 10 categories are further lumped into 8 categories, where, 'Unpaid crop/livestock farming' consists of 'Unpaid crop farming' and 'Unpaid livestock farming', and 'Paid crop/livestock farming' consists of 'Paid crop farming' and 'Paid livestock farming' of the original categories.

Table 3.4 shows the distribution of the population aged 5 years and over by main activity and by Secondary economic activity for urban/rural areas. Here, 42.3% of the employed population in Cambodia (aged 5 years and over) has a 'Secondary economic activity' in addition to their main activity.

For them, the most favored secondary activity is 'Unpaid crop/livestock farming' (57.4%). In other words, about 60% of employed persons in Cambodia help family agricultural work with no payment. The proportion of the employed persons doing 'Paid crop/livestock farming' as a 'Secondary economic activity' is 14.4%. Compared with 2008 situations, the proportion for 'Unpaid crop/livestock farming' decreased from 80.4%, while that for 'Paid crop/livestock farming' increased from 6.6%.

The proportion of unemployed persons having a 'Secondary economic activity' is 39.3%, slightly lower than that of employed persons, and that of economically inactive persons is 14.3%, very low compared with those of economically active persons. It is notable that unemployed persons tend to work more as paid farming than employed persons when they engage in secondary economic activities, and that economically inactive persons do not seem interested in paid farming.

On the one hand, there is a distinct urban/rural difference in the likelihood of having a 'Secondary economic activity'. Rural persons aged 5 years and over are much more likely to have a secondary economic activity than the urban counterparts (37.7% vs. 9.3%).

On the other hand, the pattern of distribution of persons by secondary economic activity is not very different between urban and rural areas: 'Unpaid crop/livestock farming' is by far the biggest, followed by 'Paid crop/livestock farming' and so on, although 'Unpaid crop/livestock farming' occupies a little less in urban areas than in rural areas (50.9% vs. 62.8%, respectively).

The proportions for categories of 'Second economic activity' other than unpaid and paid crop/livestock farming are not very different from each other. A notable case would be 'Trade', whose proportion for urban areas is considerably high with 15.4%. This fact is also observed for 2008 (10.0%).

Generally speaking, the relationship between main activity and secondary economic activity is stable between GPCC 2008 and CIPS 2013.



**Table 3.4 Number and Rate of Persons Aged 5 years and over Having Secondary Economic Activity and their Composition by Typr of Secondary Economic Activity: Urban/Rural, 2013**

Main Activity	Number of Persons		Rate of Having 'Secondary Economic Activity	Persons Having Secondary Activity	Type of Secondary Economic Activity (%)								
	Total Persons	Having 'Secondary Economic Activity			Unpaid crop/livestock farming	Paid crop/livestock farming	Fishing	Household production/service	Construction	Trade	Transport	Other paid employment	Not stated
<b>Cabodia total</b>	<b>13,250,890</b>	<b>4,192,228</b>	<b>31.6</b>	<b>100.0</b>	<b>62.0</b>	<b>12.8</b>	<b>4.9</b>	<b>5.3</b>	<b>5.5</b>	<b>5.4</b>	<b>1.4</b>	<b>2.7</b>	<b>0.0</b>
Employed	8,125,981	3,439,507	42.3	100.0	57.4	14.4	5.7	5.8	6.6	5.4	1.6	3.0	0.0
Unemployed (employed ever before)	84,761	33,288	39.3	100.0	56.8	24.7	5.5	2.0	2.7	1.6	1.0	5.6	0.0
Economically Inactive	5,040,148	719,433	14.3	100.0	84.2	4.3	1.2	3.4	0.3	5.5	0.4	0.8	0.0
Home Maker	540,157	105,381	19.5	100.0	83.2	5.4	0.7	3.9	0.2	4.9	0.8	1.0	0.0
Student	3,436,809	555,433	16.2	100.0	85.3	3.6	1.3	2.9	0.2	6.0	0.2	0.5	0.0
Dependent	946,445	48,647	5.1	100.0	77.8	8.9	1.1	4.8	1.8	1.6	1.6	2.4	0.0
Rent Receiver / Retired	101,323	8,424	8.3	100.0	68.6	3.9	0.0	18.1	0.0	3.0	0.0	6.4	0.0
Other	15,414	1,547	10.0	100.0	21.1	43.3	0.0	8.3	10.2	1.1	0.0	16.0	0.0
<b>Cambodia Urban</b>	<b>2,848,437</b>	<b>265,756</b>	<b>9.3</b>	<b>100.0</b>	<b>50.9</b>	<b>6.2</b>	<b>3.3</b>	<b>7.4</b>	<b>6.1</b>	<b>15.4</b>	<b>4.5</b>	<b>6.3</b>	<b>0.0</b>
Employed	1,605,271	196,224	12.2	100.0	49.5	6.5	4.3	6.0	7.9	12.3	5.6	7.8	0.0
Unemployed (employed ever before)	16,665	2,085	12.5	100.0	56.0	23.2	0.0	10.5	0.0	0.0	0.0	10.2	0.0
Economically Inactive	1,226,502	67,447	5.5	100.0	54.8	4.6	0.4	11.1	1.0	24.6	1.5	1.9	0.0
Home Maker	219,596	11,168	5.1	100.0	57.3	5.2	1.1	8.4	0.4	17.0	7.1	3.5	0.0
Student	792,695	48,703	6.1	100.0	53.5	1.6	0.0	12.3	0.7	29.8	0.5	1.5	0.0
Dependent	161,258	5,411	3.4	100.0	60.1	22.9	3.1	4.4	5.5	3.3	0.0	0.6	0.0
Rent Receiver / Retired	48,962	1,586	3.2	100.0	72.2	0.0	0.0	21.2	0.0	0.0	0.0	6.6	0.0
Other	3,992	579	14.5	100.0	20.0	80.0	0.0	0.0	0.0	0.0	0.0	0.0	0.0
<b>Cambodia Rural</b>	<b>10,402,453</b>	<b>3,926,472</b>	<b>37.7</b>	<b>100.0</b>	<b>62.8</b>	<b>13.2</b>	<b>5.0</b>	<b>5.2</b>	<b>5.5</b>	<b>4.8</b>	<b>1.2</b>	<b>2.4</b>	<b>0.0</b>
Employed	6,520,711	3,243,283	49.7	100.0	57.9	14.9	5.8	5.7	6.6	5.0	1.3	2.7	0.0
Unemployed (employed ever before)	68,096	31,203	45.8	100.0	56.9	24.8	5.9	1.4	2.9	1.7	1.1	5.3	0.0
Economically Inactive	3,813,646	651,986	17.1	100.0	87.2	4.3	1.2	2.6	0.2	3.5	0.2	0.7	0.0
Home Maker	320,561	94,213	29.4	100.0	86.3	5.4	0.6	3.3	0.2	3.5	0.0	0.7	0.0
Student	2,644,114	506,731	19.2	100.0	88.4	3.8	1.4	2.0	0.1	3.7	0.2	0.4	0.0
Dependent	785,187	43,236	5.5	100.0	80.0	7.1	0.9	4.9	1.3	1.3	1.8	2.6	0.0
Rent Receiver / Retired	52,361	6,839	13.1	100.0	67.8	4.7	0.0	17.4	0.0	3.7	0.0	6.4	0.0
Other	11,422	968	8.5	100.0	21.8	21.4	0.0	13.3	16.2	1.7	0.0	25.6	0.0

\*Rate of Having Secondary Economic Activity for a given main activity status and age group, expressed in percentage, is the proportion of the persons having secondary economic activity to the total number of persons having the corresponding main activity status and age group.