

Index Map 2-17. Districts and Communes in *Siem Reap* Province

Code of Province / Municipality, District, and Commune

17 SIEM REAP

1701 Angkor Chum

170101 Char Chhuk
170102 Doun Peng
170103 Kouk Doung
170104 Koul
170105 Nokor Pheas
170106 Srae Khvav
170107 Ta Saom

1702 Angkor Thum

170201 Chob Ta Trav
170202 Leang Dai
170203 Peak Snaeng
170204 Svay Chek

1703 Banteay Srei

170301 Khnar Sanday
170302 Khun Ream
170303 Preah Dak
170304 Rumchek
170305 Run Ta Aek
170306 Tbaeng

1704 Chi Kraeng

170401 Anlong Samnar
170402 Chi Kraeng
170403 Kampong Kdei
170404 Khvav
170405 Kouk Thlok Kraom
170406 Kouk Thlok Leu
170407 Lveaeng Ruessei
170408 Pongro Kraom
170409 Pongro Leu
170410 Ruessei Lok
170411 Sangvauy
170412 Spean Tnaot

1706 Kralanh

170601 Chanleas Dai
170602 Kampong Thkov
170603 Kralanh
170604 Krouch Kor
170605 Rong Kou
170606 Sambuor
170607 Saen Sokh
170608 Snuol
170609 Sranal
170610 Ta An

1707 Puok

170701 Sasar Sdam
170702 Doun Kaev
170703 Kdei Run
170704 Kaev Poar
170705 Khnat
170707 Lvea
170708 Mukh Paen
170709 Pou Treay
170710 Puok
170711 Prey Chruk
170712 Reul
170713 Samraong Yea
170715 Trei Nhoar
170716 Yeang

1709 Prasat Bakong

170902 Bakong
170903 Ballangk
170904 Kampong Phluk
170905 Kantreang
170906 Kandaek
170907 Mean Chey
170908 Roluos
170909 Trapeang Thum

1710 Krong Siem Reab

171001 Sangkat Sla Kram
171002 Sangkat Svay Dankum
171003 Sangkat Kouk Chak
171004 Sangkat Sala Kamraeuk
171005 Sangkat Nokor Thum
171006 Sangkat Chreav
171007 Sangkat Chong Knies
171008 Sangkat Sambuor
171009 Sangkat Siem Reab
171010 Sangkat Srangae
171011 Sangkat Ampil
171012 Sangkat Krabei Riel
171013 Sangkat Tuek Vil

1711 Soutr Nikom

171101 Chan Sa
171102 Dam Daek
171103 Dan Run
171104 Kampong Khleang
171105 Kien Sangkae
171106 Khchas
171107 Khnar Pou
171108 Popel
171109 Samraong
171110 Ta Yaek

1712 Srei Snam

171201 Chrouy Neang Nguon
171202 Klang Hay
171203 Tram Sasar
171204 Moung
171205 Prei
171206 Slaeng Spean

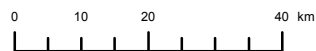
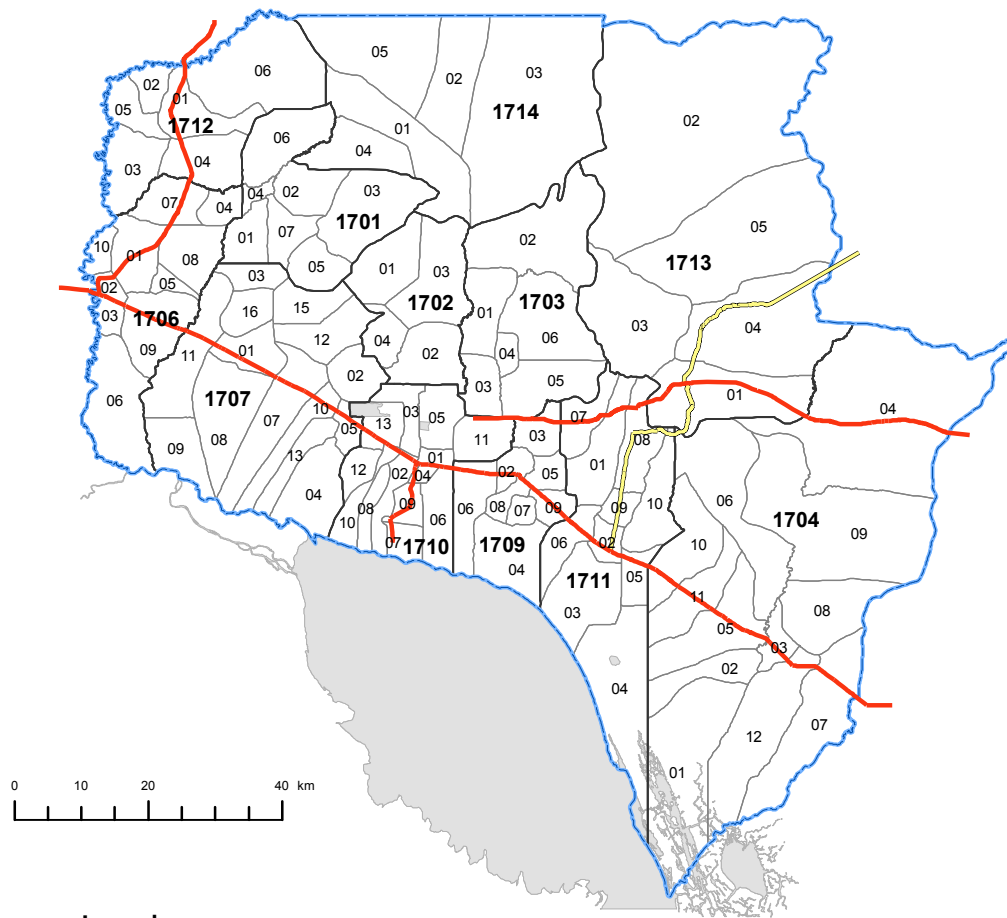
1713 Svay Leu

171301 Boeng Mealea
171302 Kantuot
171303 Khnang Phnum
171304 Svay Leu
171305 Ta Siem

1714 Varin

171401 Prasat
171402 Lvea Krang
171403 Srae Nouy
171404 Svay Sa
171405 Varin

* Codes and boundaries are as of May 18, 2011.



Legend

- National Boundary
 - Provincial / Municipal Boundary
 - District Boundary
 - Commune Boundary
 - National Road
 - Primary Provincial Road
 - Water Area
 - 0000** District Code
 - 00** The last two digits of Commune Code
- * Commune Code consists of District Code and two digits.