



Statistics Bureau of Japan (SBJ) News Bulletin

May 11, 2011

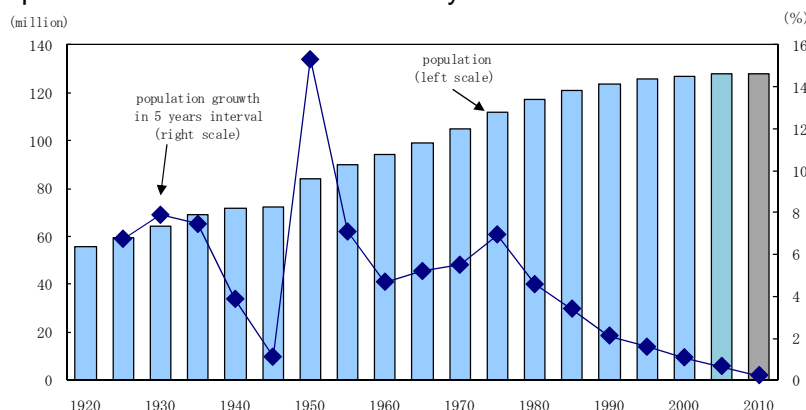
Preliminary Counts of the 2010 Population Census of Japan released

The Preliminary Counts of the 2010 Population Census of October 1, were released on February 25, 2011.

The Population Census is the most important statistical survey for clarifying the actual state of Japan's population and households. It has been conducted every five years since 1920, and the 19th Survey was conducted in October 2010.

The results show that the total population of Japan as of October 1, 2010 was 128.056 million. During the 2005-2010 period, the population of Japan remained nearly stable (increase of 0.2% in five years, or 0.05% per annual), which is the lowest since the Population Census was begun in 1920.

Population and the Growth Rate in 5 year intervals : 1920 to 2010



According to the United Nations projections, the World Population (Medium Variant) in 2010 was 6.909 billion. Japan's population based on the most recent census results ranks tenth in population, following China (1.354 billion), India (1.214 billion), the U.S.A. (318 million), Indonesia (233 million), Brazil (195 million), Pakistan (185 million), Bangladesh (164 million), Nigeria (158 million), and Russia (140 million).

International Comparison of Population (2010)

Rank	Country	Population (million)	Proportion to whole world population (%)
	World	6,909	100.0
1	China	1,354	19.6
2	India	1,214	17.6
3	U. S. A.	318	4.6
4	Indonesia	233	3.4
5	Brazil	195	2.8
6	Pakistan	185	2.7
7	Bangladesh	164	2.4
8	Nigeria	158	2.3
9	Russia	140	2.0
10	Japan	128	1.9
11	Mexico	111	1.6
12	Philippines	94	1.4
13	Viet Nam	89	1.3
14	Ethiopia	85	1.2
15	Egypt	84	1.2
16	Germany	82	1.2
17	Turkey	76	1.1
18	Iran	75	1.1
19	Thailand	68	1.0
20	Congo	68	1.0

Source: United Nations, World Population Prospects, The 2008 Revision, Medium Variant.
For Japan, based on the Population Census.

STATISTICS BUREAU, MINISTRY OF INTERNAL AFFAIRS AND COMMUNICATIONS, JAPAN

19-1, Wakamatsu-cho, Shinjuku-ku, Tokyo 162-8668, Japan

Phone: 81-3-5273-1116 Fax: 81-3-5273-1010 E-mail: stat-general@soumu.go.jp

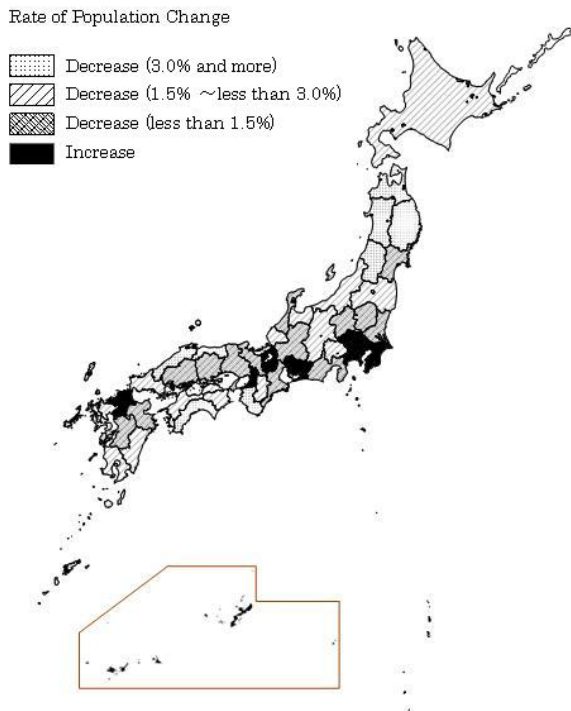
Website: www.stat.go.jp/english/

Among the 47 prefectures in Japan, the population of Tokyo was the largest with 13.162 million, followed by Kanagawa-ken (9.050 million), Osaka-fu (8.863 million), Aichi-ken (7.408 million), Saitama-ken (7.195 million), Chiba-ken (6.217 million), Hyogo-ken (5.589 million), Hokkaido (5.507 million), Fukuoka-ken (5.073 million) and Shizuoka-ken (3.765 million). These 10 prefectures each have a population of over 3 million.

Tokyo also ranked at the top in the population increase rate with 4.7%, followed by Kanagawa-ken (2.9%), Chiba-ken (2.7%), etc. 9 prefectures experienced population increase from 2005 to 2010, which was a decrease from 15 prefectures from 2000 to 2005.

On the other hand, Akita-ken showed the highest population decrease rate of 5.2%, followed by Aomori-ken (4.4%), Kochi-ken (4.0%), etc. 38 prefectures lost the population from 2005 to 2010.

Population Change Rate by Prefecture : 2005 to 2010



For the information about prefecture name, please check the following URL.
<http://www.stat.go.jp/english/data/handbook/map2.htm>

(Source) Population Census (SBJ)
For further details, see the website below.
<http://www.stat.go.jp/english/data/kokusei/index.htm>