



Jabatan Perangkaan  
M A L A Y S I A

# MALAYSIA'S ECONOMIC CENSUS 2011 AND THE STRENGTHENING OF THE BUSINESS REGISTER

**DR. HJ ABDUL RAHMAN HASAN  
CHIEF STATISTICIAN  
DEPARTMENT OF STATISTICS, MALAYSIA**

# PURPOSE OF PRESENTATION

To explain the implementation of the Economic Census 2011 and Malaysia Business Register

To share the efforts in strengthening the Business Register



**OUTLINE  
OF THE  
PRESENTATION**

**Introduction**

**Economic Census (EC) 2011**

**Business Register (BR) / EE Frame**

**Strengthening the EE Frame**

**Conclusion**

# INTRODUCTION

GNI per capita



Established in 1949 as Bureau of Statistics

Department of Statistics, Malaysia (DOSM) is the premier government agency entrusted with the responsibility for the purpose of monitoring national economic performance and social development of the country

Operate under the Statistics Act 1965 (Revised 1989)



# ECONOMIC CENSUS 2011

**The Economic Census is conducted every 5 years**

**The last Economic Census was conducted in 2006 for reference year 2005**

**Economic Census 2011 will include data on SMEs. The last SME Census was undertaken by the Department in 2005**

**Economic Census 2011 will cover all economic activities in the country i.e. Agriculture, Forestry & Fishing; Mining & Quarrying; Manufacturing; Construction and Services**

# WHY ECONOMIC CENSUS

## Objectives

Comprehensive information on growth, structure and profile

Benchmark for the compilation of National Accounts

Formulation of national development plans and economic policies

Updating database on SMEs as well as to monitor and evaluate contribution of SMEs to the overall economy

## Use

Constructing economic indicators

Government – monitoring national plans, SME development

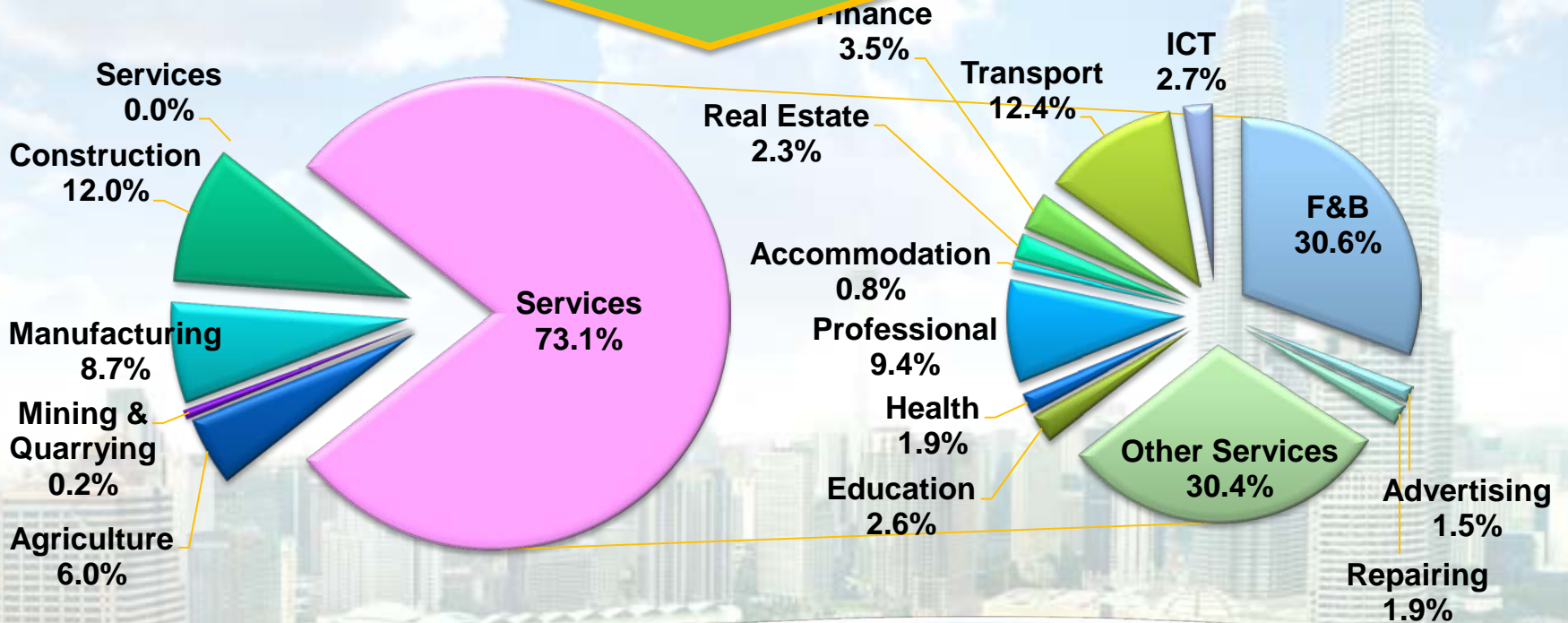
Private, academic and researchers

To establish and supplement the business register



# Scope And Coverage

**WHAT?**



**Total companies: 943,526**  
**Using Malaysia Standard Industrial Classification (MSIC)**  
**2008 version 1.0 in line with ISIC Rev.4.**

## DEFINITION SMEs

SECTOR	Total sales turnover/revenue	Number of fulltime employee
Manufacturing	Less than RM25 million	Less than 150
Services and other sectors	Less than RM5 million	Less than 50



## Questionnaires and Information collected

### Types of questionnaires

- specific industries
- new industries

270 set of questionnaires. Questionnaires can also be downloaded through the website

### Content of the questionnaire

- Part A: company/business profile and economic activity, income from sales of goods and services, expenditure of goods, materials and industrial services, value of assets, employment and salaries & wages while
- Part B : SMEs module which covered topics such as sources of financing and access to credit, innovation, marketing & promotion, import and export, usage of ICT and environmental compliance in businesses



## Data collection and processing

### Data Collection Approaches

- Area Listing
- List Frame (mail inquiry)

### Data collection

- Fields enumerators (telephone or field follow up)
- Manage and update status through Operational Information Control System.

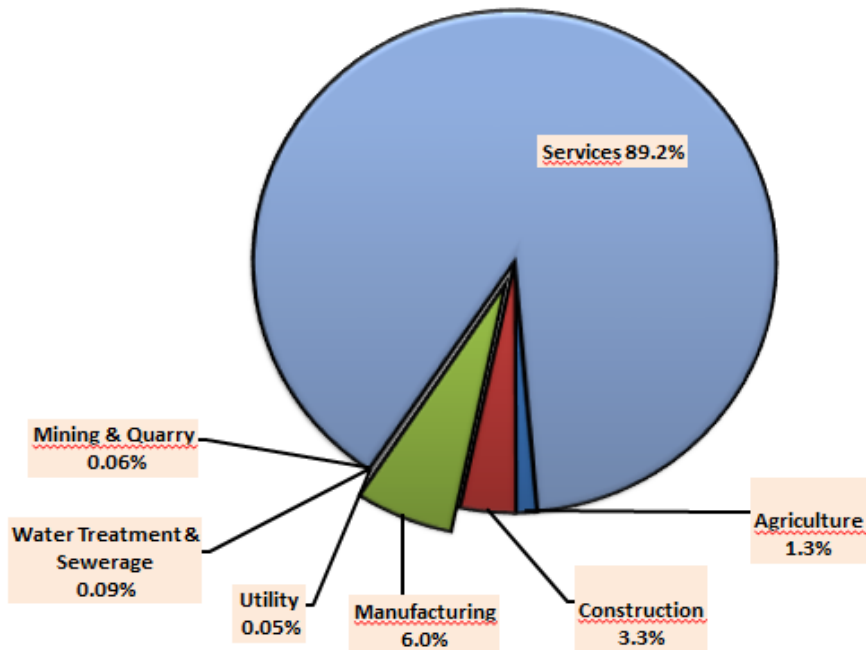
### Processing

- ICR has been used to optimise in processing the questionnaires as well as computerized editing and coding has been practised.



# Finding

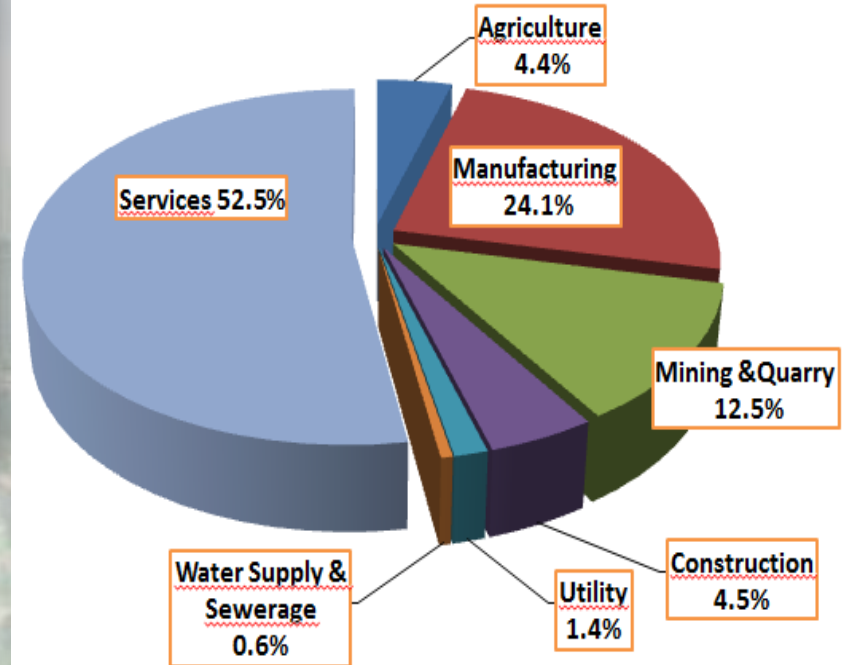
## Percentage Establishments by Sectors



The number of establishments companies operated in the year 2010 was 662,939 establishments. The majority of the establishments categorized under Services sector (89.2%)

Overall contribution in term of value added was RM707.5 billion. Services sector continue to dominate the portion of the value added by 52.5%

## Percentage Value Added by Sectors



# BUSINESS REGISTER (BR) / EE FRAME



2010 Onward

Enterprise Establishment (EE Frame) National Enterprise Wide Statistical System (NEWSS)

2002

CRS upgraded with Wide Area Network (WAN)

1996

CRS upgraded with Local Area Network (LAN)

1994

The CRS was set in a PC based using Dbase IV

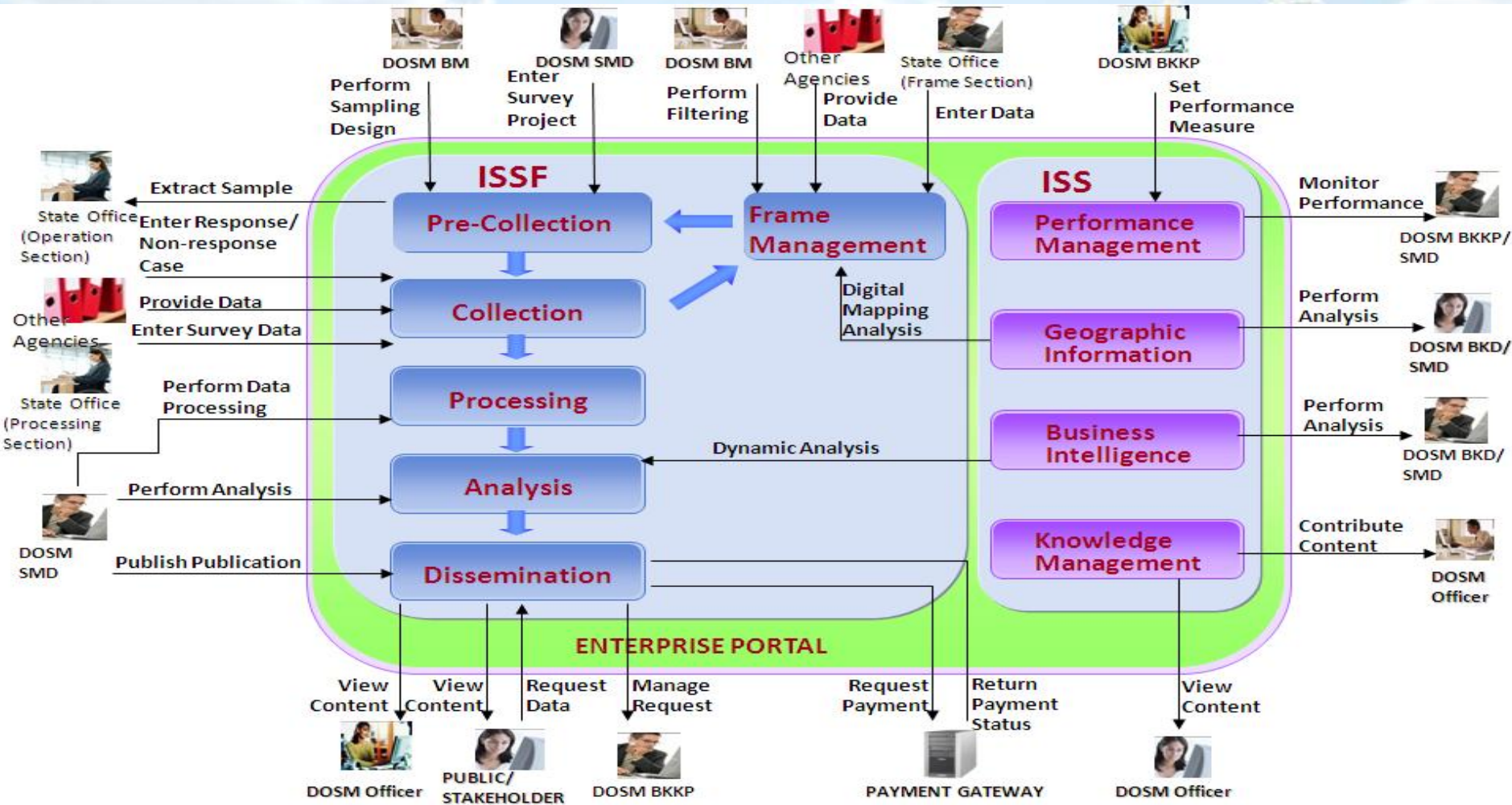
1988

Central Register System (CRS) was initiated





# Conceptual Framework



- Foundation are driven by System of National Account
- Inline with Generic Statistics Business Process Model (GSBPM)
- Designed under Integrated Statistical Systems Framework (ISSF)



# Conceptual Framework

Maintenance through list information from administrative sources.

Maintenance of establishment and enterprise information

## FUNCTION

To generate monitoring reports and analysis tools

To monitor the number/type of establishments in an enumeration block

Screening  
Agency information  
Business Profiles

Establishment/Enterprise  
Duplicate  
Data Collection  
Respondent Management Control

## MODULE

Report  
Business Intelligence (BI)

Geographical Information System (GIS)- EE



# Defining Statistical Units

## ADMINISTRATIVE UNIT

FINANCIAL GROUP

LEGAL ENTITY

LOCAL LEGAL UNIT

## STATISTICAL UNIT


ENTERPRISE GROUP

ENTERPRISE

KIND OF ACTIVITY

LOCAL UNIT

ESTABLISHMENT



# Coverage Of EE Frame

The industry classifications based on MSIC 2008 version 1.0 (comparable to ISIC 4 of the United Nations)

Register comprises all of establishments operating in Malaysia

Classifications by the principal activity of the unit (e.g value added/output/sales by the goods produced or services rendered)



# Data Items In EE Frame

Unique ID number

Serves as the primary identifiers

Company/ establishment ID number

Created by source of agencies

Contact information

Such as business name, postal and location address and others

Legal status and equity structure

Basic financial information

Activity and industry classifications

Company and establishment organisation structure

Censuses/ surveys control status indicators



# Updating The EE Frame

Main objective of BR is to provide censuses/surveys frame efficiently, reliable and timely

## **Administrative Data Source**

Central agency and non-central agency

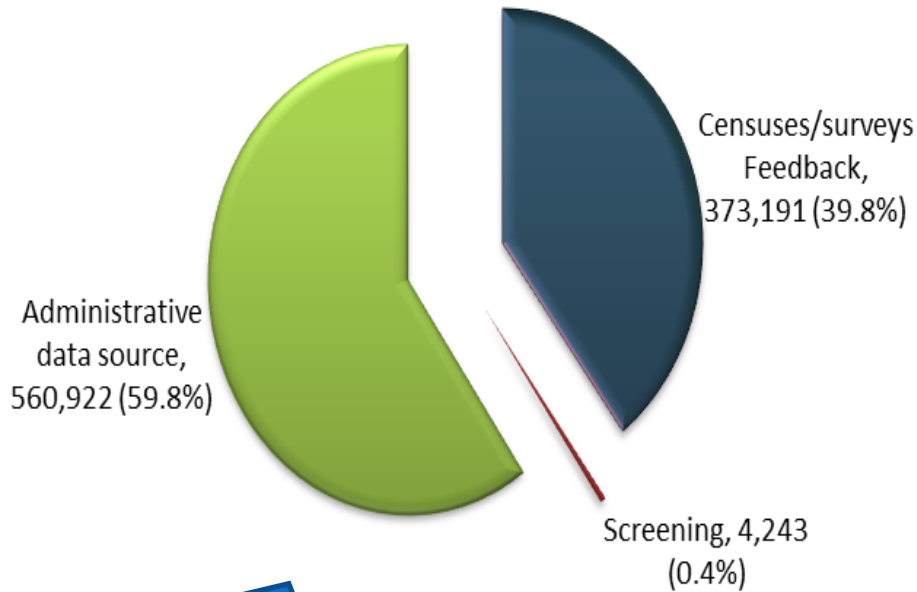
## **Censuses/Survey Feedbacks**

Operational Information Control System

## **Screening Source**

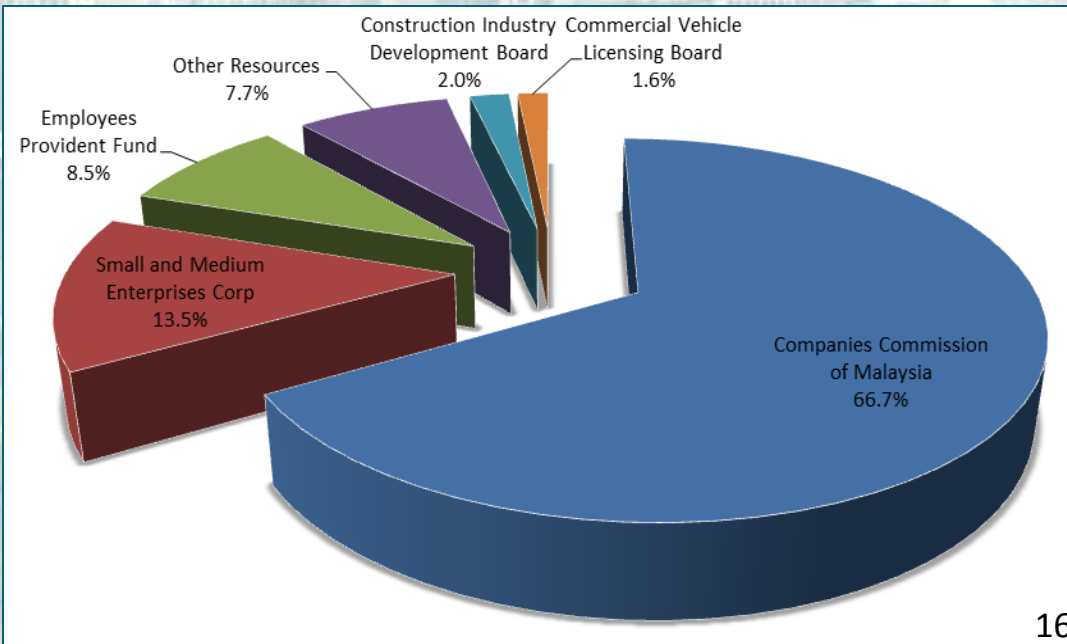
Industries which are not covered in any censuses/surveys

## Actives Enterprises/Establishments By Source



Companies Commission of Malaysia (CCM) accounted for the largest portion for administrative data source followed by Small and Medium Enterprise Corporation 13.5% and Employees Provident Fund 8.5%.

## Percentage Distribution of Administrative Data Source



There are about 938 thousand active enterprises/establishments in Malaysia EE Frame.

Administrative data source is the largest constituted of 59.8% followed by the Censuses/Survey Feedback 39.8% and Screening 0.4%



# STRENGTHENING THE EE FRAME

The DOSM is responsive to the various challenges related to the National Development Policies/Vision and drastic change in Malaysia Economy

EE Frame as the backbone to the economic statistics should be responsive and sensitive

One of the main objectives of EC 2011 is to establish and supplement the business register to accommodate the changes in line with the aspiration of the department



# Strengthening The Business Process Model

## Generic Statistical Business Process Model (GSBPM)

DOSM has taken step to strengthen the processes and quality assurance

BR maintenance is continuous activity

To ensure the BR is comprehensive, accurate, reliable and timely

### SOURCES

### COLLECTION PROCESS

### OUTPUT

### IMPROVE THE QUALITY OF THE REGISTER

Quality Management / Metadata Management

1  
Specify Needs

2  
Design

3  
Build

4  
Collect

5  
Process

6  
Analyse

7  
Disseminate

8  
Archive

9  
Evaluate

To ensure the sources are relevant to the user requirement and aligned with the changes in Malaysia business landscape

These will involve identifying the units and running the collection process according to suitable formats which can be integrated with the register.

It will prepare the output to be validated and made ready for the release.

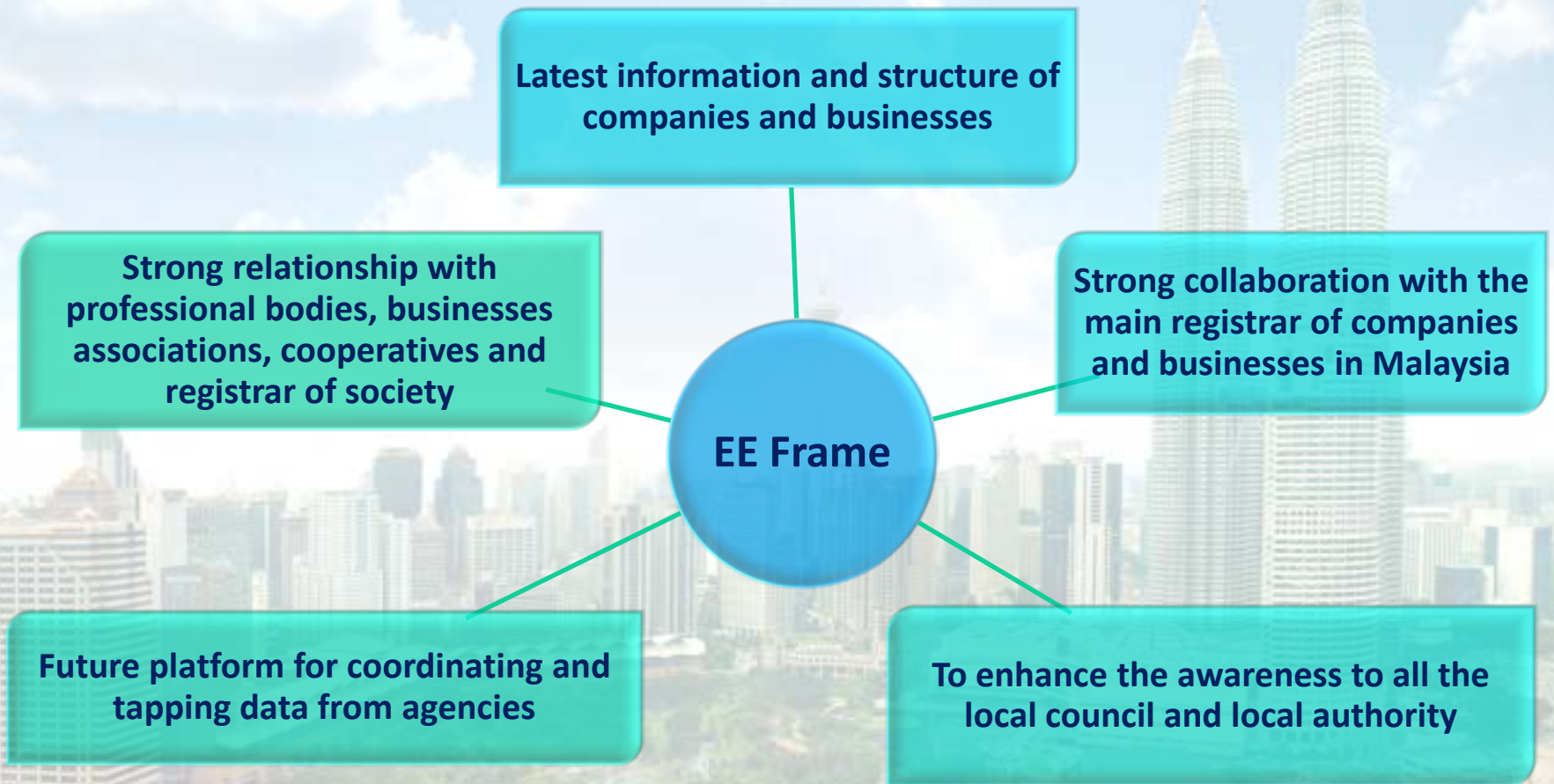
Finally the evaluation phase will provide the information to improve the quality of the register.



The benefit applying the GSBPM is the standardisation of terminology between processes and organisations



# Enhancing The Use Of Administrative Data Sources



All these efforts in future will make DOSM as the gateway for bringing all administrative data relating to businesses



# Keeping The EE Frame Up To Date

## Perfect frame

- A perfect frame should reflect the real business world in term of structures; classifications; linkages; data contents; availability status and contact information

## Applying GSBPM

- Balance the need for accuracy, timeliness and stability of the registered data
- Minimise the effects on time series of shocks arising from the updating process

## Operational Control Information Module

- These assist the field enumerators at state offices to access and update the most current frame information in real time which it improves the timeliness and the efficiency of the updates.

## Integrated Listing Module (InLis) through Household Module

- To accommodate the listing process for establishment/enterprises using maps beside the normal exercise for household

## Geographical Information System Module

- In future, geospatial data through Geographical Information System Module

# REDUCE RESPONDENT BURDEN



An integrated system designed for data collection and the register can assist the department to improve its respondent relation

Latest information in the register will increase the efficiency of data collection and reducing the frustration of respondents

Field enumerator to better understand the business and in turn have a better context when communicating with respondent.

Improving respondent relation will lead to greater quality responses and data collected.



# STRENGTHENING THE SAMPLING ROLES

Completeness, consistency, reliability and up to date frame are important as it is going to be used as sample selection, stratification, imputation and estimation

The register will provide the latest number of active population that is used to calculate the weights for blow-up process for variables of interest

BR should minimize the number of frame defect to avoid the gap between the estimated figures and the actual population



# Establishing Business Demography Statistics And Business Profiling

## BUSINESS DEMOGRAPHY

Business Demography is a growing demand and most NSOs are using this platform to update the register (birth, death, survival and growth)



Information about units on the register must be kept up to date to facilitate the censuses and survey

## BUSINESS PROFILING

Business profiling is the method to analyse the legal, operational and accounting structure of an enterprise and enterprise group



Profiling can be viewed as part of a broader, coordinated strategy for improving agency's economic statistics



DOSM has taken step by creating enterprise module in the NEWSS system which can facilitate the profiling activity

# CONCLUSION

To further nation's progress, policymakers and users need economic and social statistics

The business register is vital component in the censuses/surveys process

DOSM has taken active response to the challenges ahead and the need from the policymakers and planners through implementation of The Strategic Plan 2010 - 2014

The plan is to ensure DOSM remains relevant with the function as outlined in the act and to achieve the vision to be the leading statistical agency internationally by the year 2020.



**THANK YOU**

THANK YOU

