

OUTLINE OF THE CIES2014

(CAMBODIA INTER-CENSAL ECONOMIC SURVEY)

21st Jan. 2014
National Statistics Center, Japan
Eri Hirota

CONTENTS

1. Background
2. Characteristics of Cambodia
3. Outline of the CIES2014
4. Prospect of the CIES2014

2

1. BACKGROUND

- Economic Census and Surveys conducted in Cambodia
 - ❖ 2006. 2 Establishment Listing (Phnom Penh)
 - ❖ 2007. 2 Economic survey (Phnom Penh)
 - ❖ 2009. 2 Nation-wide Establishment Listing 2009 (EL2009)
 - ❖ 2009.12 Economic Census Pre-Test (Phnom Penh)
 - ❖ 2010. 3 Pilot Survey for Economic Census
 - ❖ 2011. 3 Economic Census 2011

EC2011 was conducted for the first time in the history of Cambodia. It was realized based on preceding surveys mentioned above, especially the EL2009.

3

2. CHARACTERISTICS OF CAMBODIA

- From the final results of the EC2011

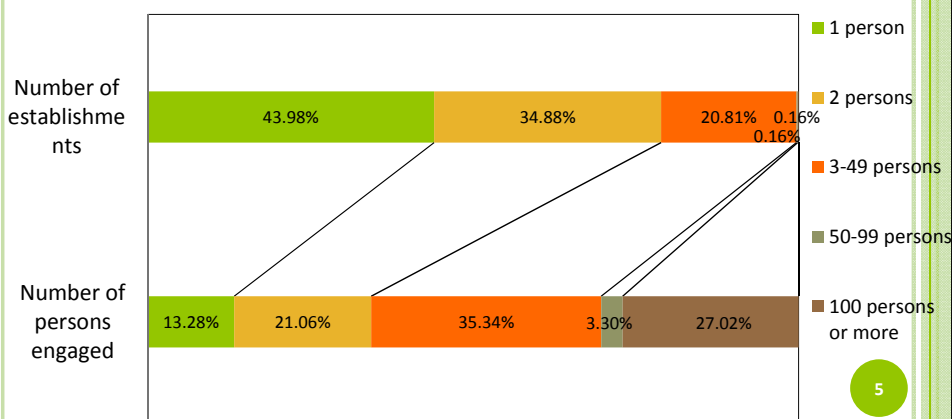
Number of Establishments	505,134
Number of New Establishments	182,439
Number of Persons Engaged	1,673,390
Annual Sales (million USD)	12,678
Annual Sales per Entity (USD)	25,548
Annual Profit and Loss (million USD)	1,699
Annual Profit and Loss per Entity (USD)	3,440

4

2. CHARACTERISTICS OF CAMBODIA

● From the final results of the EC2011

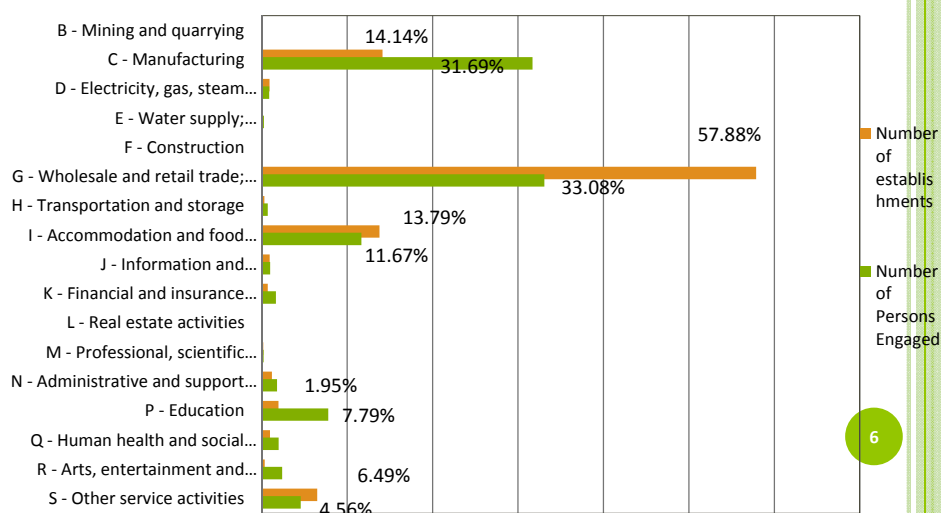
❖ Distribution of establishments and persons engaged by size of persons engaged



2. CHARACTERISTICS OF CAMBODIA

● From the final results of the EC2011

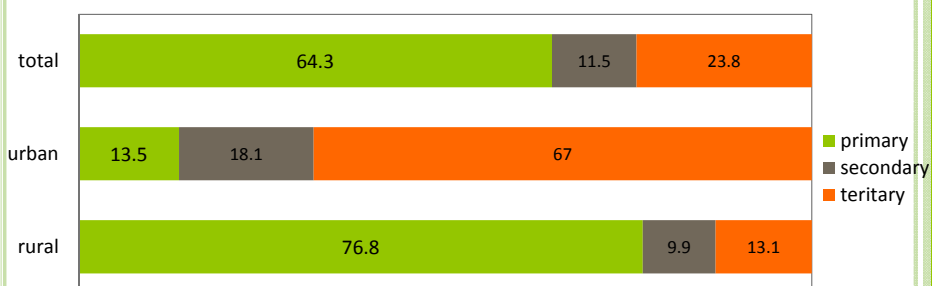
❖ Distribution of persons engaged and establishments by ISIC



2. CHARACTERISTICS OF CAMBODIA

- From the results of the CIPS2013

- Distribution of persons engaged by industrial sector, urban or rural



7

3. OUTLINE OF THE CIES2014

- The main purposes of the CIES2014

- to keep and improve the knowledge and skill required to conduct economic censuses and surveys.
 - to obtain economic information on current establishments and enterprises.
 - to provide information on the changes in economic aspects during the past 3 years after the EC2011.

8

3. OUTLINE OF THE CIES2014

● Legal basis

- ❖ Statistics Law, Article 8 and 9.
 - Conduct inter-censal surveys between two censuses.

❖ Statistics Law, Article 5 and 6.
Conduct censuses (Population, Agricultural, Economic) every 10 years.

9

3. OUTLINE OF THE CIES2014

● Schedule

- ❖ Reference date
 - 1st March 2014
- ❖ Period of enumeration
 - Small and micro scale establishments : 1st to 5th March 2014
 - Large and medium scale establishments : 1st to 31th March 2014
- ❖ Release of the results
 - Preliminary results : Aug. 2014
 - Final results : March 2015

Mapping and Establishment listing are conducted prior to enumeration.

10

3. OUTLINE OF THE CIES2014

● Sampling design

- ❖ Around 10,000 establishments are selected as follows:

505,134 establishments were enumerated in EC2011.

- All (100% of) large and medium scale establishments (50 persons engaged and more)

1619 establishments in EC2011

- About 2% of small and micro scale establishments (less than 50 persons engaged)

540 EAs are selected out of 15,224 EAs of the EC2011.

11

3. OUTLINE OF THE CIES2014

● Coverage of the survey



Section of ISIC	Kind of establishment		
	Fixed	Movable	Mobile
Primary Sector (ISIC: A)	Street Business		
Secondary Sector (ISIC: B~F)	<div style="border: 2px dashed blue; border-radius: 15px; padding: 10px; display: inline-block;"> target </div> <div style="border: 1px solid blue; border-radius: 15px; padding: 5px; display: inline-block; margin-left: 20px;"> Coverage of EC2011 </div>		
Third Sector (ISIC: G~U)			
ISIC: O			
ISIC: T			
ISIC: U			

12

3. OUTLINE OF THE CIES2014

● Method of the Survey

❖ Making Establishment Lists :

All the establishments in an EA are listed and 30 establishments are selected systematically.

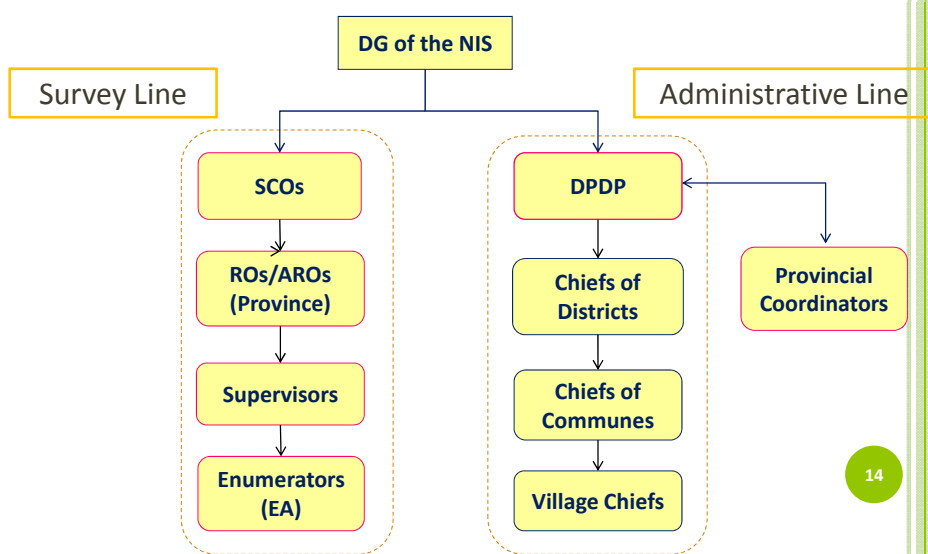
❖ Interview survey :

An enumerator (who covers one EA) visits 30 selected establishment within the EA and fills in the survey form by interviewing.

13

3. OUTLINE OF THE CIES2014

● Organization



14

3. OUTLINE OF THE CIES2014

● Survey Items and Forms

❖ Mainly 21 items

- Identification of the establishment

Area information, establishment information

- Characteristics of the establishment and entity

Characteristics of representative and owner, Ownership of establishment (Legal status), Business hours, Number of persons engaged, Kind of main business activities, Single unit, Head or Branch office, etc..

- Financial issues of the establishment and entity

Total amount of assets, amount of revenues and expenses, etc..

The image shows a sample of the CIES2014 survey form. It is a multi-page document with various sections for data entry. The top section includes the Royal Government of Cambodia logo and the Ministry of Planning. The form is divided into several parts, including identification information, characteristics of the establishment, and financial data. A green circle with the number 15 is located in the bottom right corner of the slide.

15

3. OUTLINE OF THE CIES2014

❖ Changes from EC2011

- Columns for financial items

✓ 1 figure in 1 space

✓ Selectable for USD or Riel

- Adding new topics

✓ Sex of owner

✓ Number of operated months

✓ Additional topics for estimating national accounts ...etc.

- Making pre-printed Establishment Lists for supervisors

The image shows a sample of the CIES2014 survey form, highlighting changes from EC2011. The form is a multi-page document with various sections for data entry. The top section includes the Royal Government of Cambodia logo and the Ministry of Planning. The form is divided into several parts, including identification information, characteristics of the establishment, and financial data. A green circle with the number 16 is located in the bottom right corner of the slide.

16

3. OUTLINE OF THE CIES2014

● Pretest

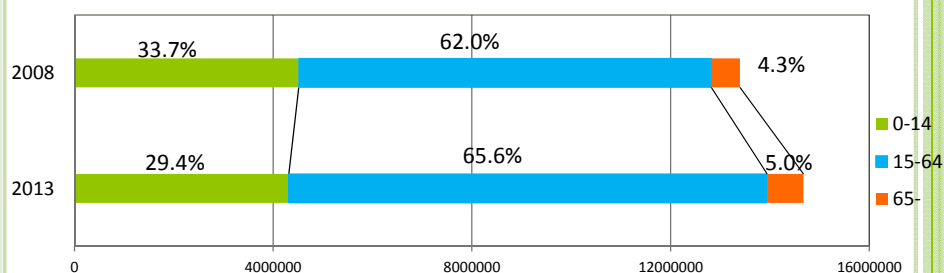
- ❖ 15 villages in Phnom Penh municipality
- ❖ Enumeration period
16th to 30th October 2013 (11 days only)

17

4. PROSPECT OF THE CIES2014

● Results from the CIPS2013

- ❖ Distribution of the population by age group
: rising trend of working age (15-64 years old)



18

4. PROSPECT OF THE CIES2014

- ❖ Labor force participation rate (15 years and over)

78.3% (2008) → 79.8% (2013)

- ❖ Educational level of beyond secondary (25 years and over)

1.8% (2008) → 3.5% (2013)

Further economic growth in Cambodia can be expected, and will be measured by the CIES2014.

19

😊 We wish and expect a successful conduct of the CIES2014

20