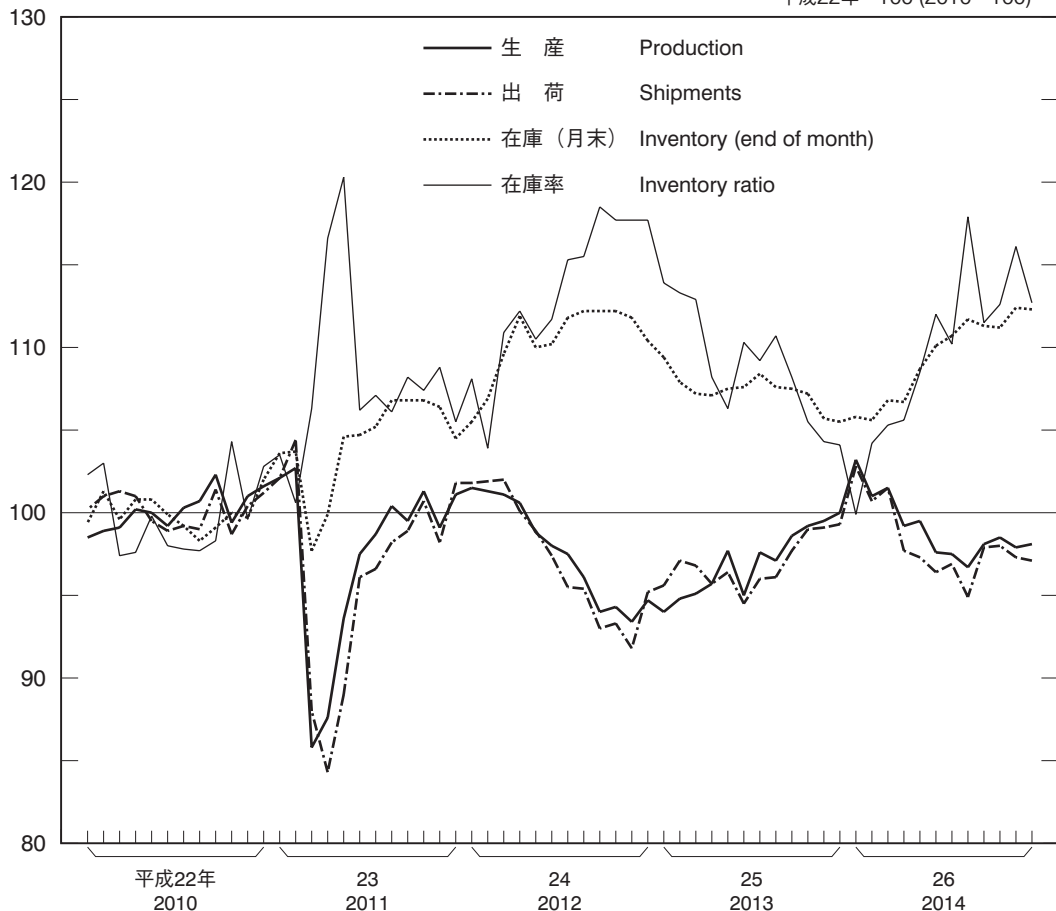


図9-1 鋁工業生産・出荷・在庫・在庫率指数（季節調整済）

INDICES OF INDUSTRIAL PRODUCTION, SHIPMENTS, INVENTORY AND INVENTORY RATIO (SEASONALLY ADJUSTED)

平成22年=100 (2010=100)



資料 経済産業省「鋁工業指数」

Source: Ministry of Economy, Trade and Industry.