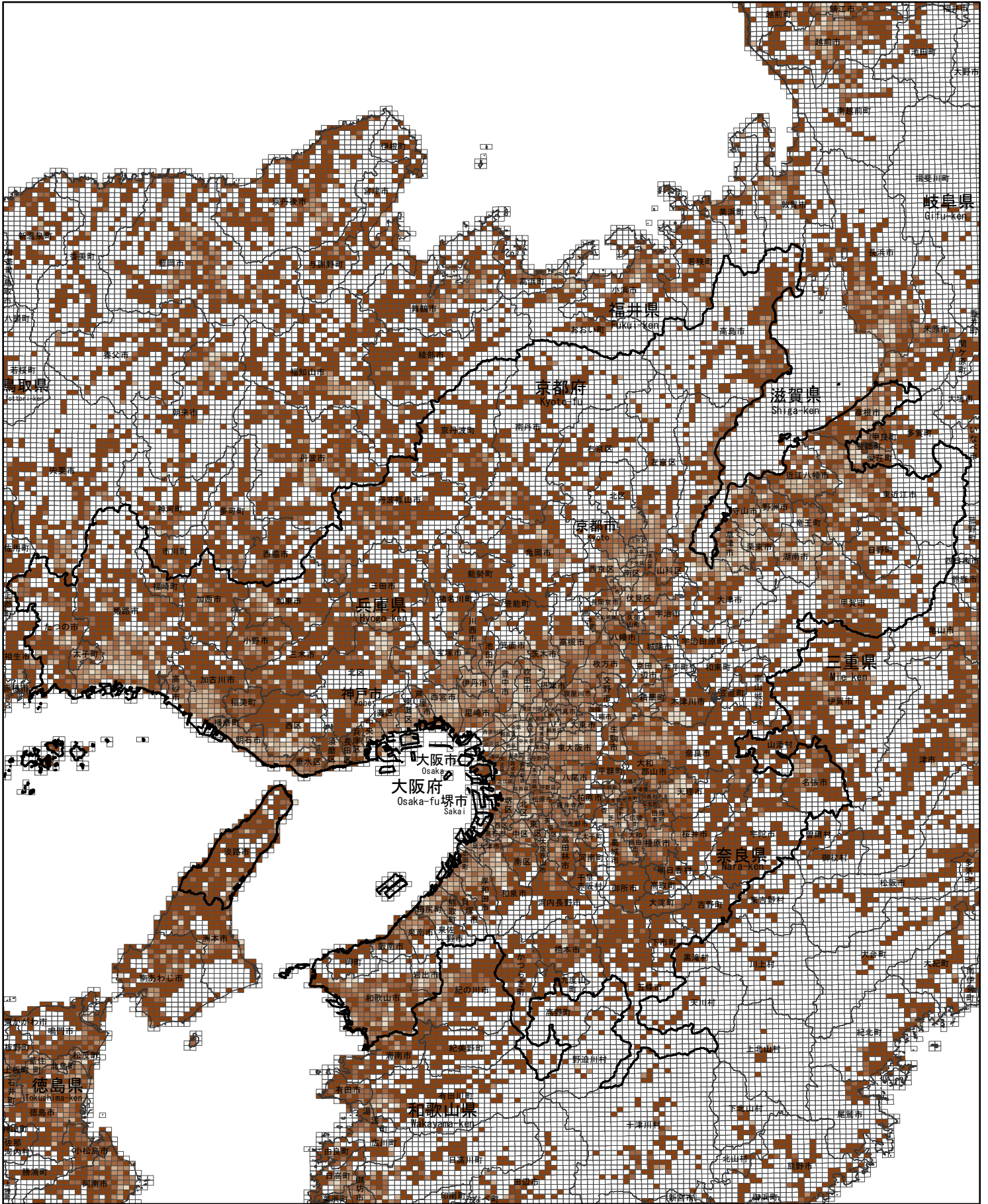


(4) 65歳以上人口の割合

Proportion of Aged Population (65 Years and over)

[基準(1km)地域メッシュ地図]
 [Basic grid square : approximately 1 square kilometer]



凡例	35.0	30.0	25.0	20.0	0.0	0
LEGEND	35.0	30.0	25.0	20.0	0.0	0
	34.9	29.9	24.9	19.9	%	

SCALE [1:960,000]

大都市圏地域
 Major Metropolitan Area

地域メッシュ統計地図は、国土交通省の「国土数値情報（行政区域・湖沼）」をもとに作成した。
 This maps were made based on the Ministry of Land, Infrastructure, Transport and Tourism "National Land Numerical Information (Administrative Zones / Lakes)".