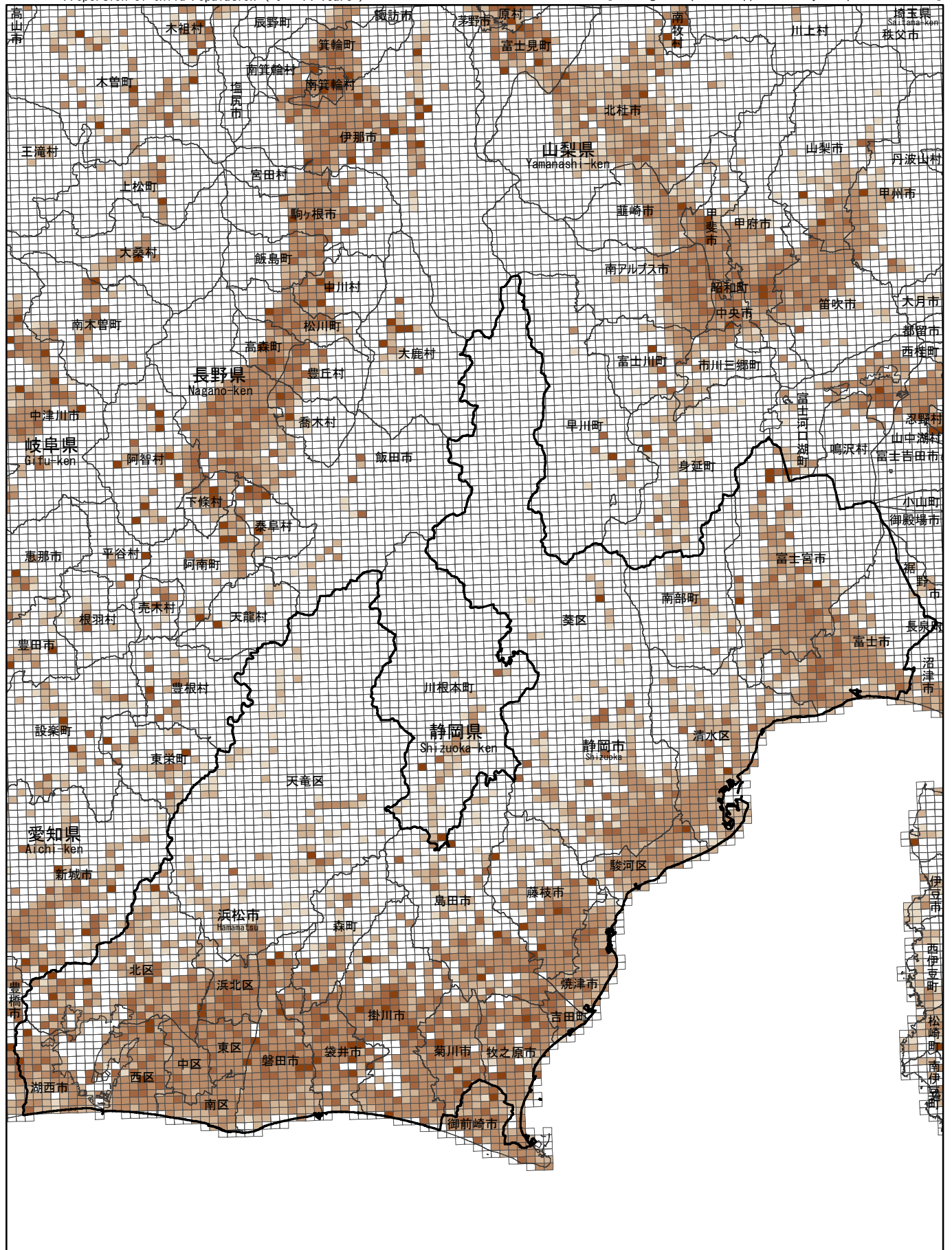


(2) 15歳未満人口の割合

Proportion of Child Population (0 - 14 Years)

[基準(1km)地域メッシュ地図]

[Basic grid square : approximately 1 square kilometer]



SCALE [1 : 680,000]

凡例	20.0	15.0	10.0	5.0	0.0	0
LEGEND	20.0	15.0	10.0	5.0	0.0	0
	19.9	14.9	9.9	4.9	%	

—
 大都市圏地域
 Major Metropolitan Area

地域メッシュ統計地図は、国土交通省の「国土数値情報（行政区域・湖沼）」をもとに作成した。
 This maps were made based on the Ministry of Land, Infrastructure, Transport and Tourism "National Land Numerical Information (Administrative Zones / Lakes)".