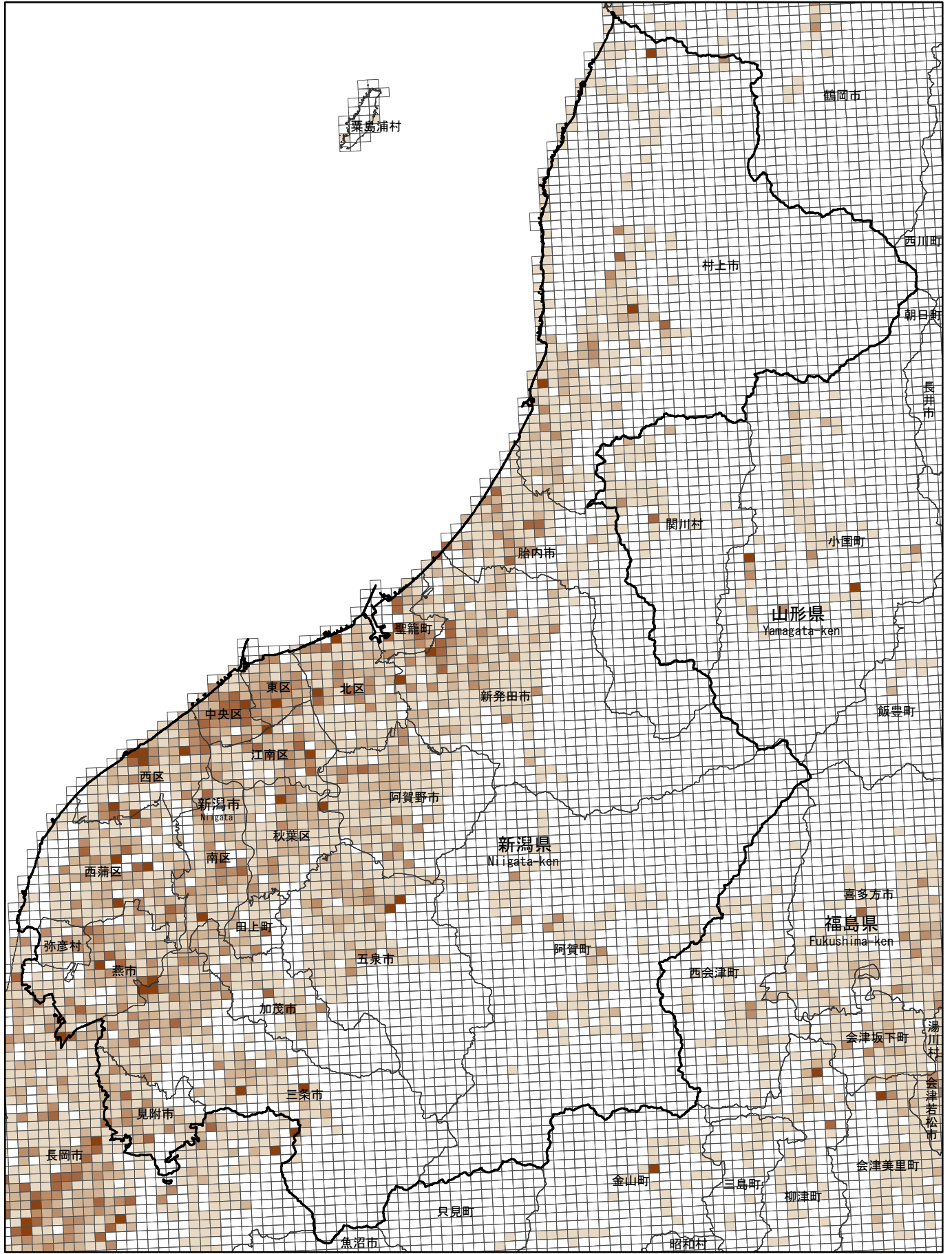


(3) 15~64歳人口の割合

Proportion of Working Age Population (15 - 64 Years)

[基準(1km)地域メッシュ地図]
[Basic grid square : approximately 1 square kilometer]



凡 例	70.0	65.0	60.0	55.0	0.0	0
LEGEND	70.0	65.0	60.0	55.0	0.0	0
	69.9	64.9	59.9	54.9	%	%

SCALE [1:550,000]

———
大都市圏地域
Major Metropolitan Area

地域メッシュ統計地図は、国土交通省の「国土数値情報(行政区域・湖沼)」をもとに作成した。
This maps were made based on the Ministry of Land, Infrastructure, Transport and Tourism "National Land Numerical Information (Administrative Zones / Lakes)".