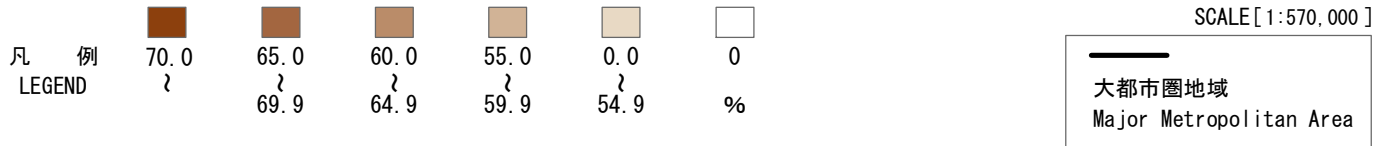
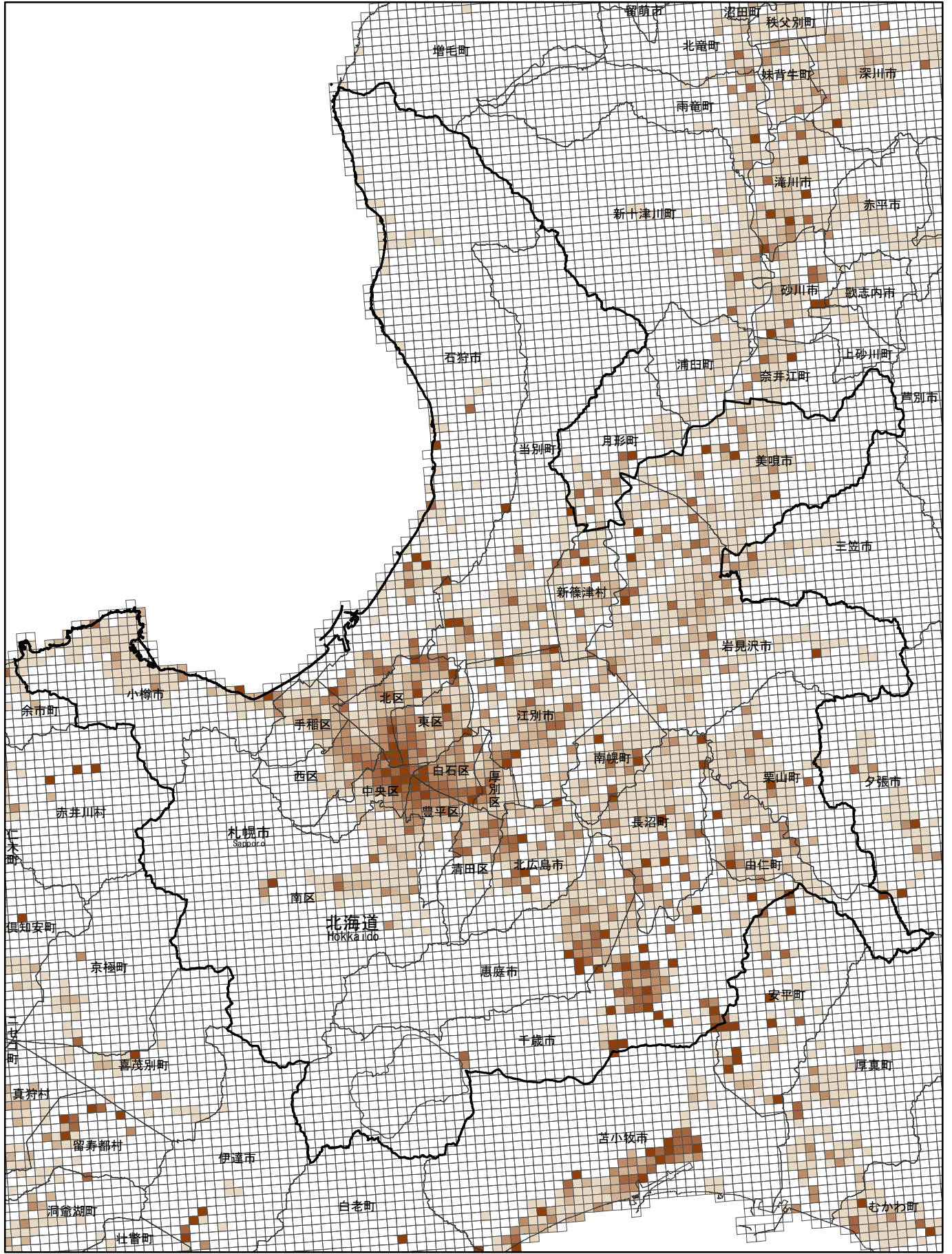


(3) 15~64歳人口の割合

Proportion of Working Age Population (15 - 64 Years)

[基準(1km)地域メッシュ地図]
 [Basic grid square : approximately 1 square kilometer]



地域メッシュ統計地図は、国土交通省の「国土数値情報（行政区域・湖沼）」をもとに作成した。
 This maps were made based on the Ministry of Land, Infrastructure, Transport and Tourism "National Land Numerical Information (Administrative Zones / Lakes)".