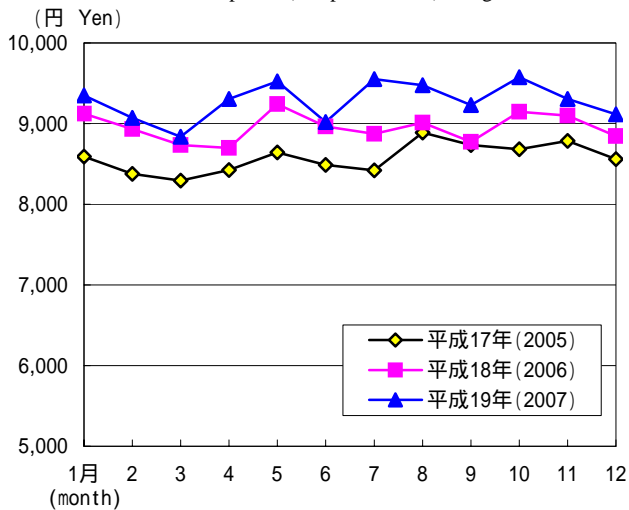


品目別支出金額の動き

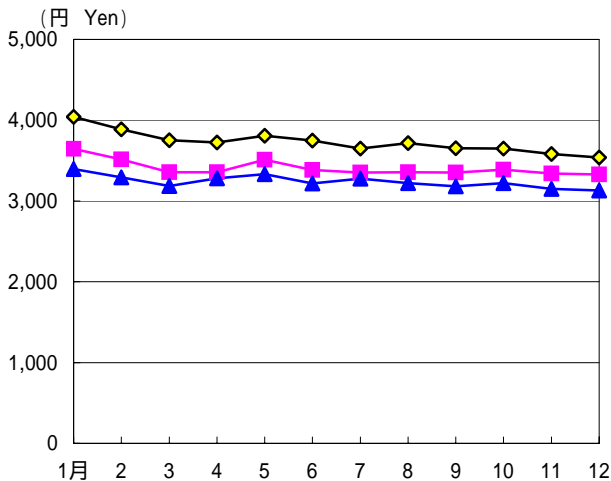
(二人以上の世帯)

Changes in Items Expenditure per Household
(Two-or-more-person Household)

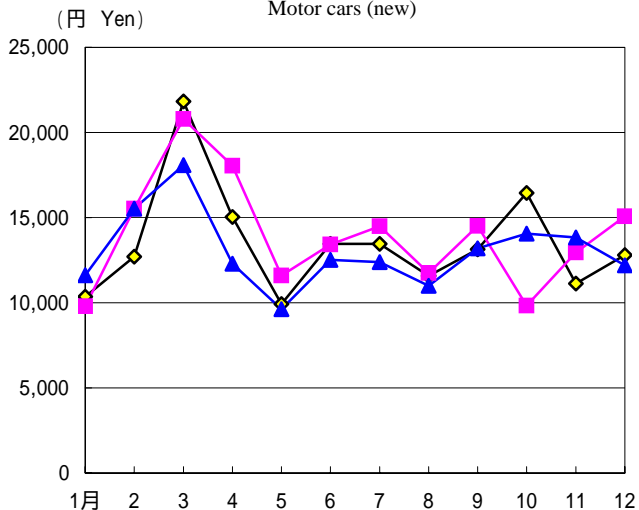
01 携帯電話(携帯電話・PHS)使用料
Mobile phone (cell phone, PHS) charge



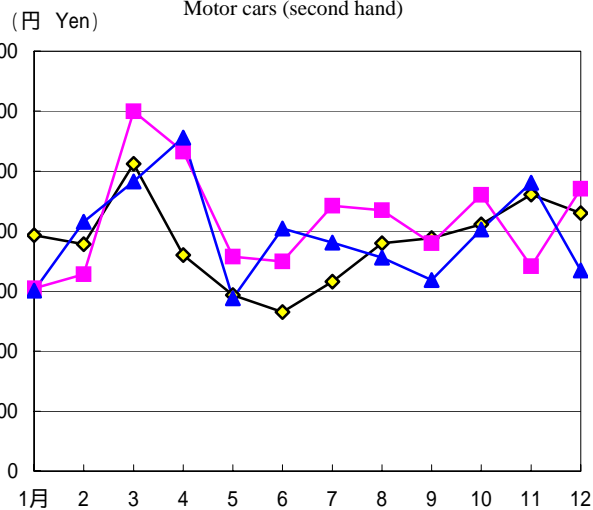
02 固定電話使用料
Fixed phone line charge



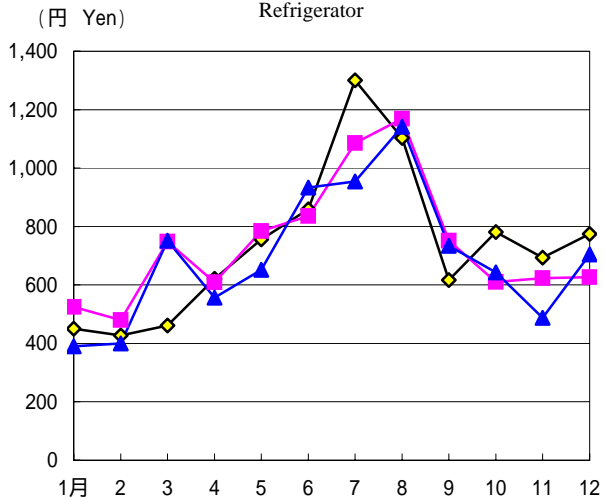
18 自動車(新車)
Motor cars (new)



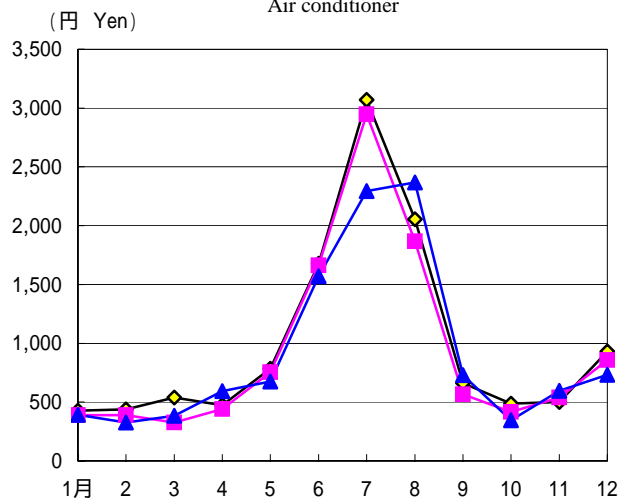
19 自動車(中古車)
Motor cars (second hand)



30 冷蔵庫
Refrigerator



32 エアコンディショナ
Air conditioner



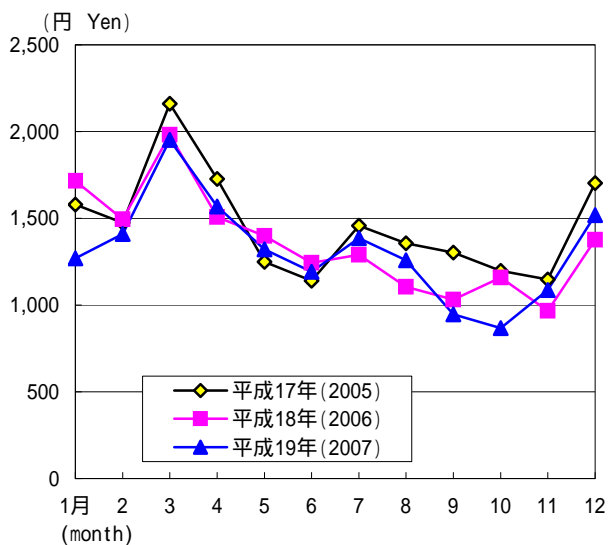
品目別支出金額の動き (続き)

(二人以上の世帯)

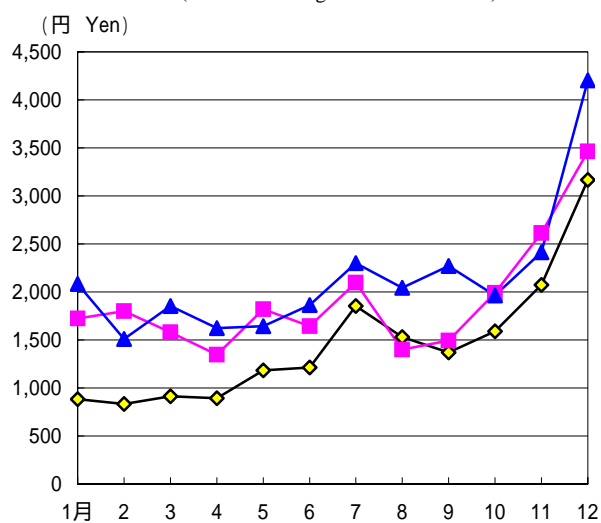
Changes in Items Expenditure per Household (Continue)

(Two-or-more-person Household)

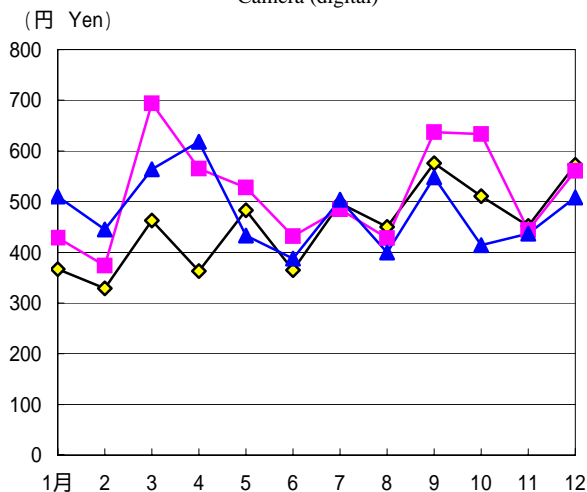
35 パソコン
Personal computer



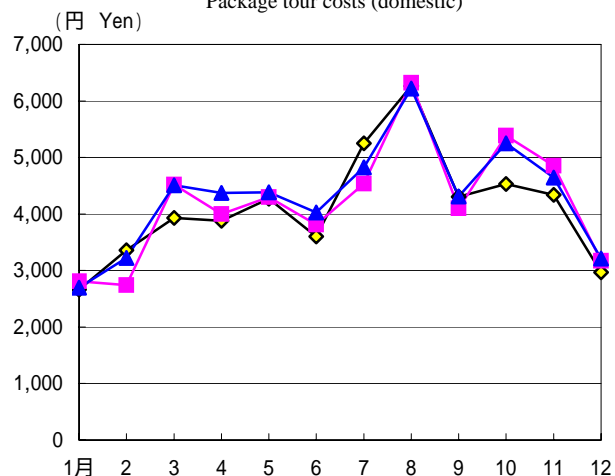
40 デジタル放送チューナー内蔵テレビ
TV (with built-in digital broadcast tuner)



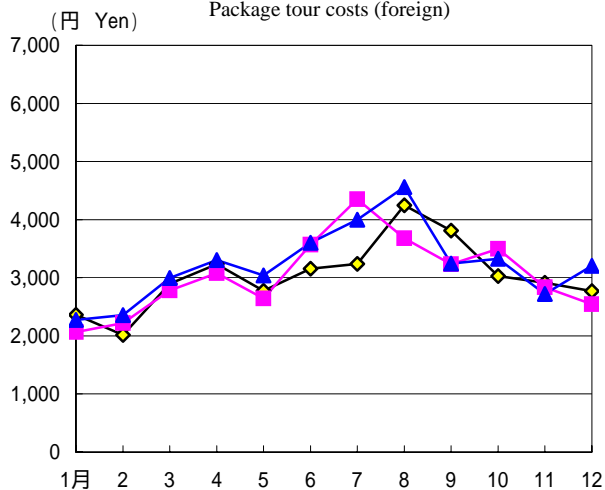
45 デジタルカメラ
Camera (digital)



60 パック旅行費(国内)
Package tour costs (domestic)



61 パック旅行費(外国)
Package tour costs (foreign)



62 挙式・披露宴費用
Wedding ceremony and reception costs

