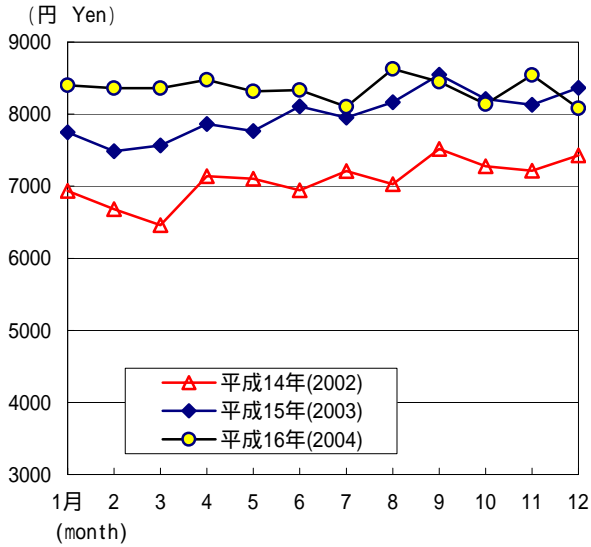


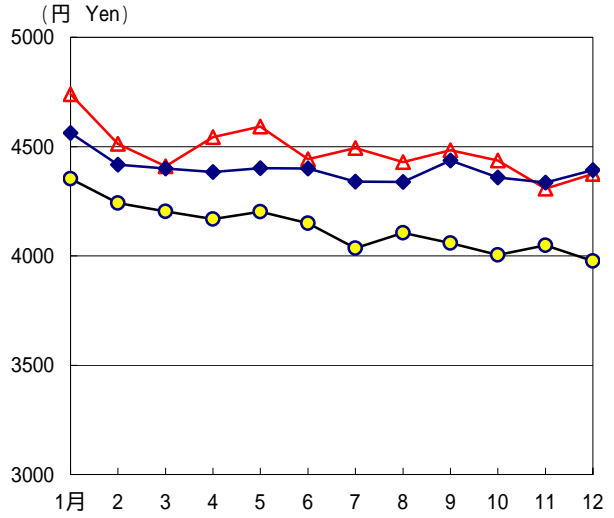
品目別支出金額の動き

Changes in Items Expenditure per Household (Graphs)

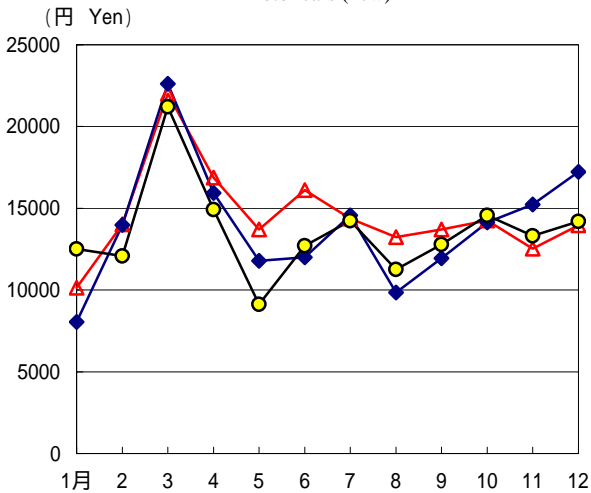
01 携帯電話(携帯電話・PHS)使用料
Mobile phone (cell phone, PHS) charge



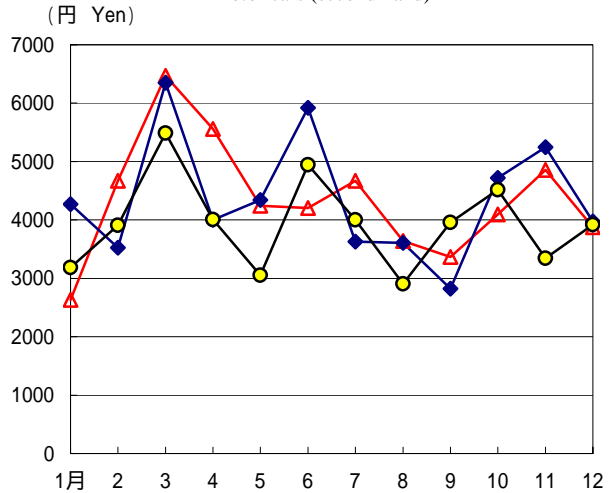
02 固定電話使用料
Fixed phone line charge



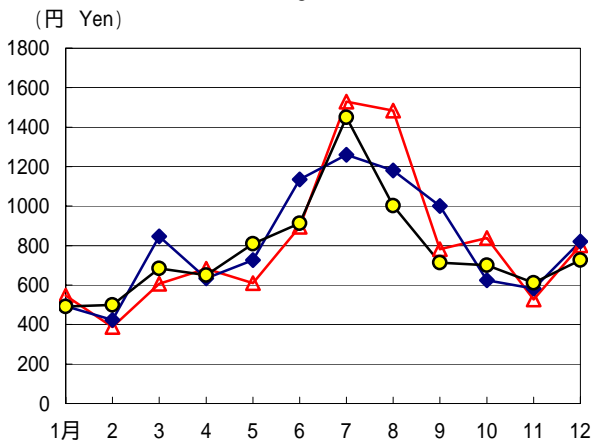
18 自動車(新車)
Motor cars (new)



19 自動車(中古車)
Motor cars (second hand)



30 冷蔵庫
Refrigerator



32 エアコンディショナ
Air conditioner

